

**FOR LEASE**  
Office Space  
3,150 sf Available  
(divisible)



## 136 11<sup>th</sup> Street

Piscataway, New Jersey

### Property Features

- +/- 15,000 sq. ft. two story brick office building
- 3,150 sq. ft. available (can be divided)
- Elevator served
- Property Manager on site
- Close proximity to local restaurants and shopping
- Ideally situated 1.3 miles from Dunellen NJ Transit Train Station, 6 miles from the NJ Turnpike and only 8 miles from the Garden State Parkway.

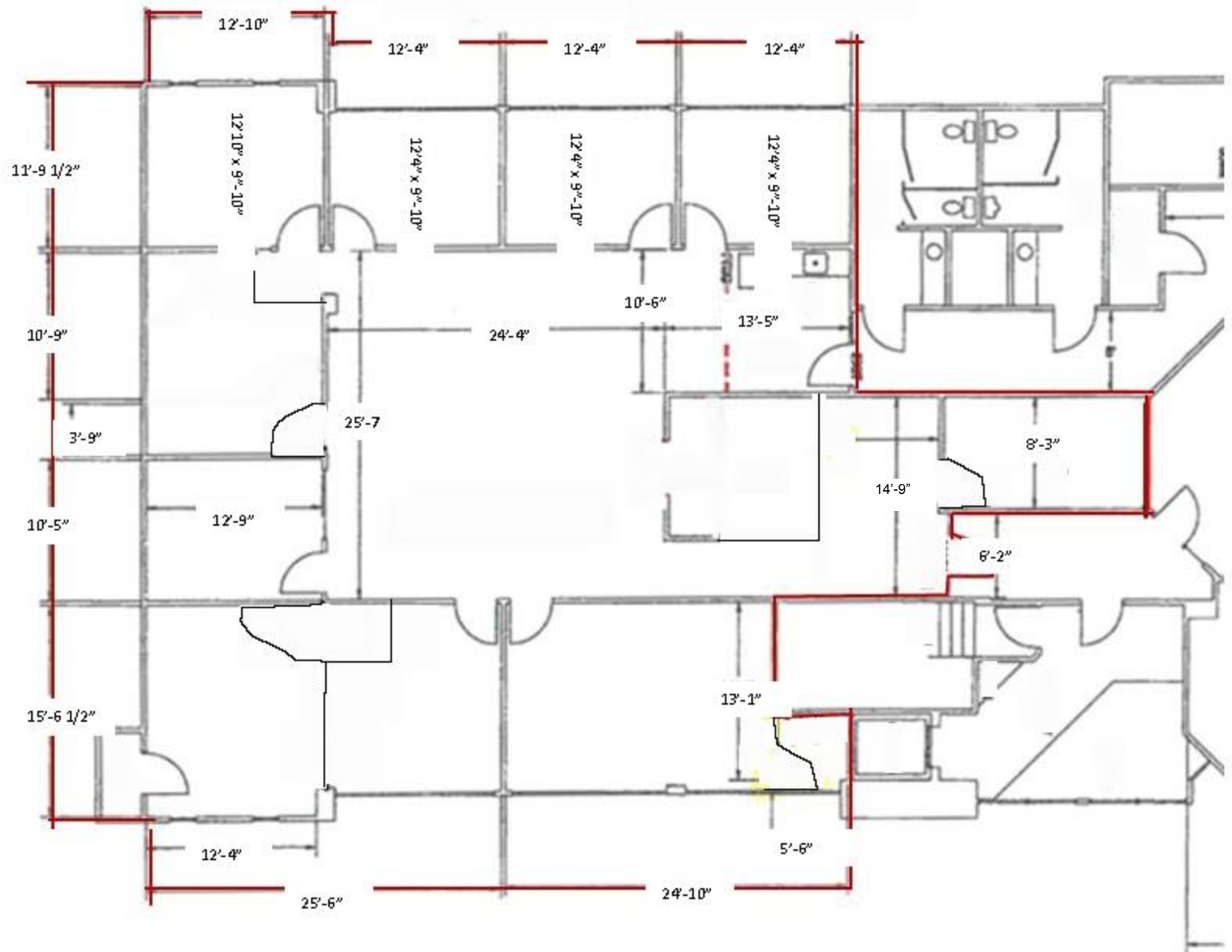


For additional information, Contact Exclusive Broker:

**William J. Delayo, Vice President**

732 839 6999 • [bdelayo@naidb.com](mailto:bdelayo@naidb.com)

**FOR LEASE**  
**Office Space**  
**3,150 sf Available**



For additional information, Contact Exclusive Broker:

**William J. Delayo, Vice President**

732 839 6999 • [bdelayo@naidb.com](mailto:bdelayo@naidb.com)