

±877, ±1,433 and/or ±2,906 SF Available

279 E. ARROW HIGHWAY

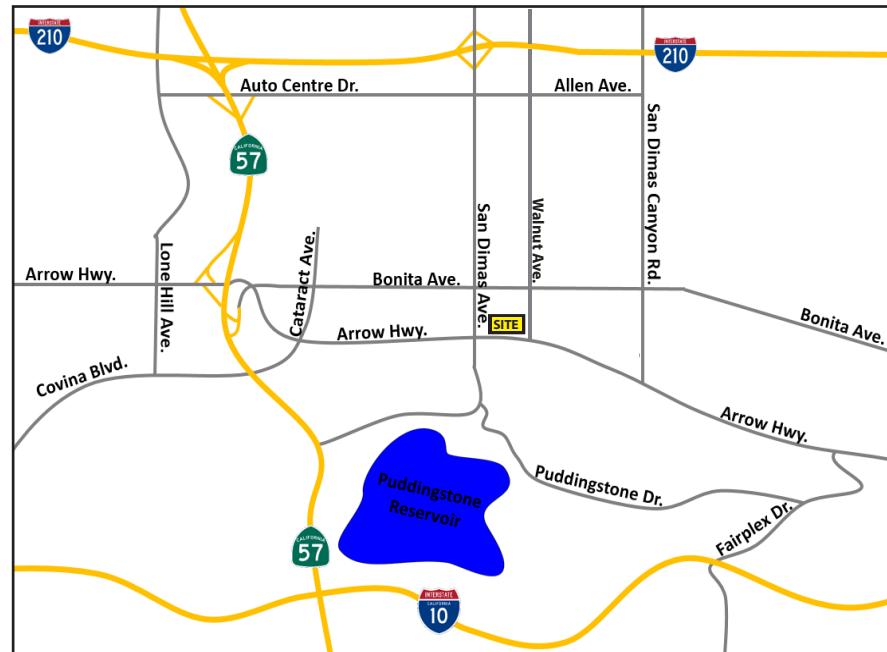
SAN DIMAS, CA 91773

FOR LEASE



FEATURES:

- 3 First floor office suites
- 4:1000 parking ratio
- Covered parking available
- Arrow Hwy. exposure
- Excellent Access to 210, 10, 57 & 71 Freeways
- Time Warner and Frontier Fios Internet



COMMERCIAL REAL ESTATE SERVICES

3535 Inland Empire Blvd. • Ontario, CA 91764
ph: 909.989.7771 fx: 909.944.8250
www.lee-assoc.com | Corporate ID # 00976995

Justin Leewood

909.373.2989

jleewood@lee-assoc.com

BRE # 01837452

Todd Launchbaugh, SIOR

909.373.2911

tlaunchbaugh@lee-assoc.com

BRE # 01059250

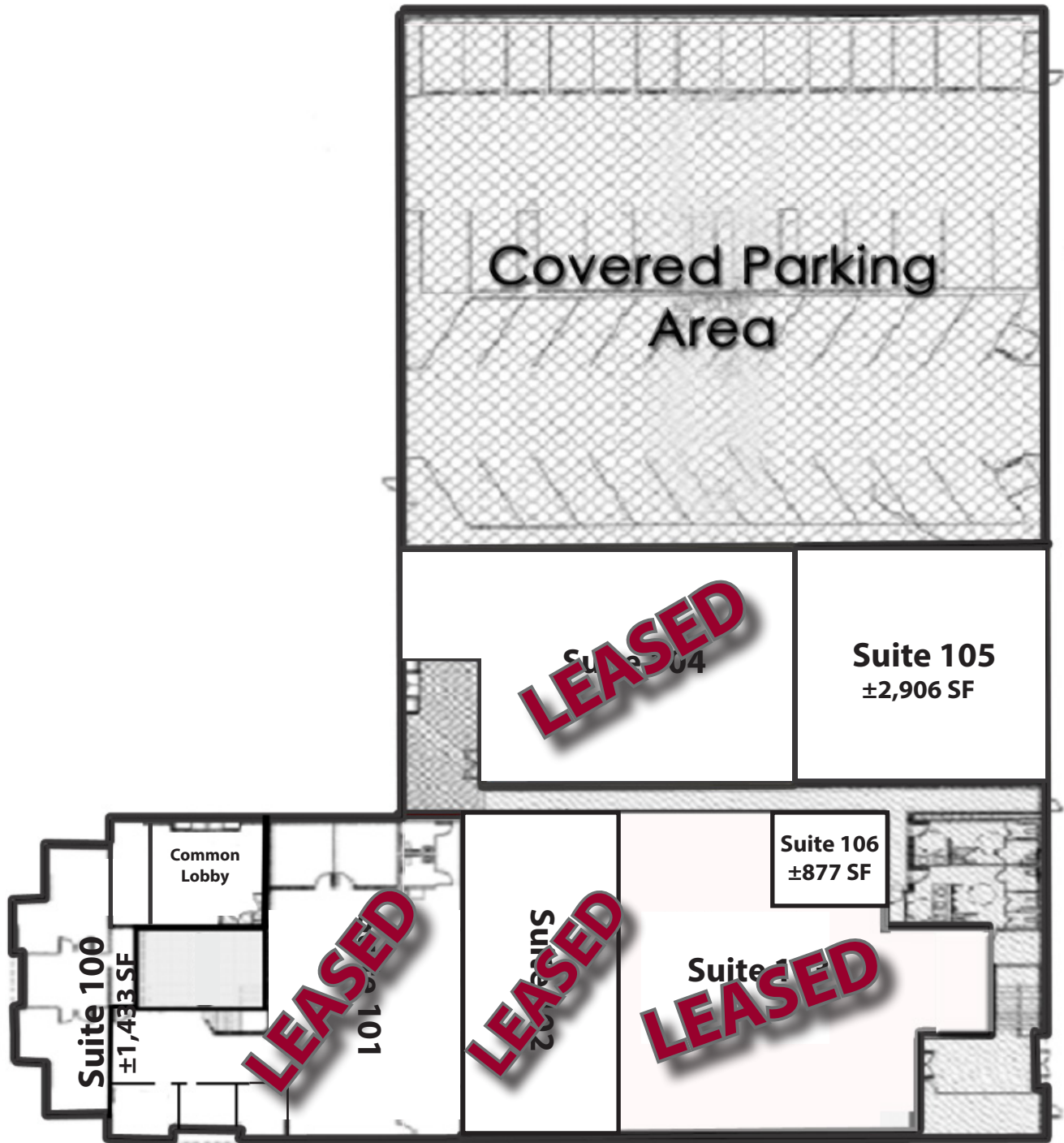
All information furnished regarding property for sale, rental or financing is from sources deemed reliable, but no warranty or representation is made to the accuracy thereof and same is submitted to errors, omissions, change of price, rental or other conditions prior to sale, lease or financing or withdrawal without notice. No liability of any kind is to be imposed on the broker herein.

±877, ±1,433 and/or ±2,906 SF Available

279 E. ARROW HIGHWAY

SAN DIMAS, CA 91773

FOR LEASE



COMMERCIAL REAL ESTATE SERVICES

3535 Inland Empire Blvd. • Ontario, CA 91764
ph: 909.989.7771 fx: 909.944.8250
www.lee-assoc.com | Corporate ID # 00976995

Justin Leewood
909.373.2989
jleewood@lee-assoc.com
BRE # 01837452

Todd Launchbaugh, SIOR
909.373.2911
tlaunchbaugh@lee-assoc.com
BRE # 01059250

All information furnished regarding property for sale, rental or financing is from sources deemed reliable, but no warranty or representation is made to the accuracy thereof and same is submitted to errors, omissions, change of price, rental or other conditions prior to sale, lease or financing or withdrawal without notice. No liability of any kind is to be imposed on the broker herein.

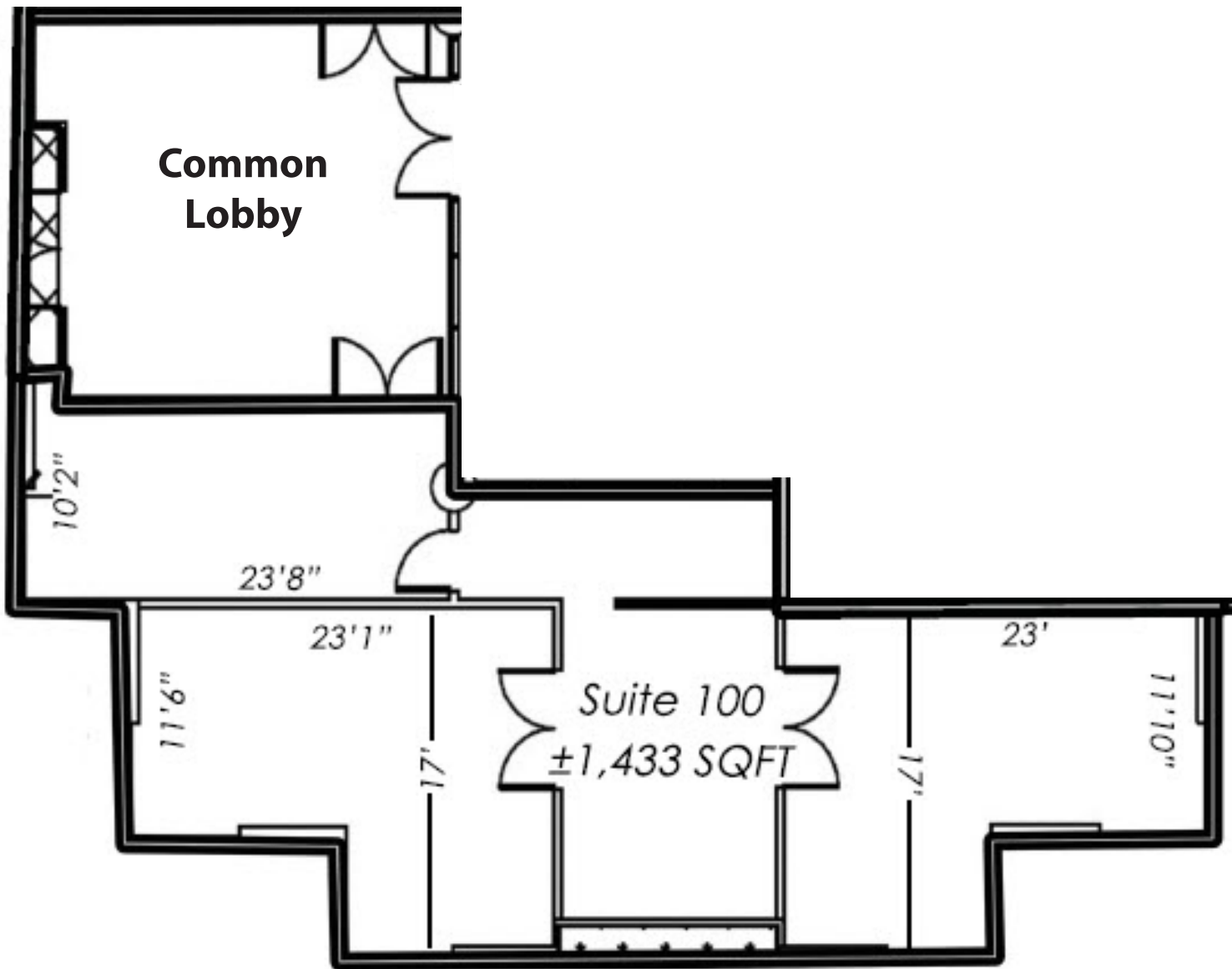
±877, ±1,433 and/or ±2,906 SF Available

279 E. ARROW HIGHWAY

SAN DIMAS, CA 91773

**Suite 100
±1,433 SF**

FOR LEASE



COMMERCIAL REAL ESTATE SERVICES

3535 Inland Empire Blvd. • Ontario, CA 91764
ph: 909.989.7771 fx: 909.944.8250
www.lee-assoc.com | Corporate ID # 00976995

Justin Leewood
909.373.2989
jleewood@lee-assoc.com
BRE # 01837452

Todd Launchbaugh, SIOR
909.373.2911
tlaunchbaugh@lee-assoc.com
BRE # 01059250

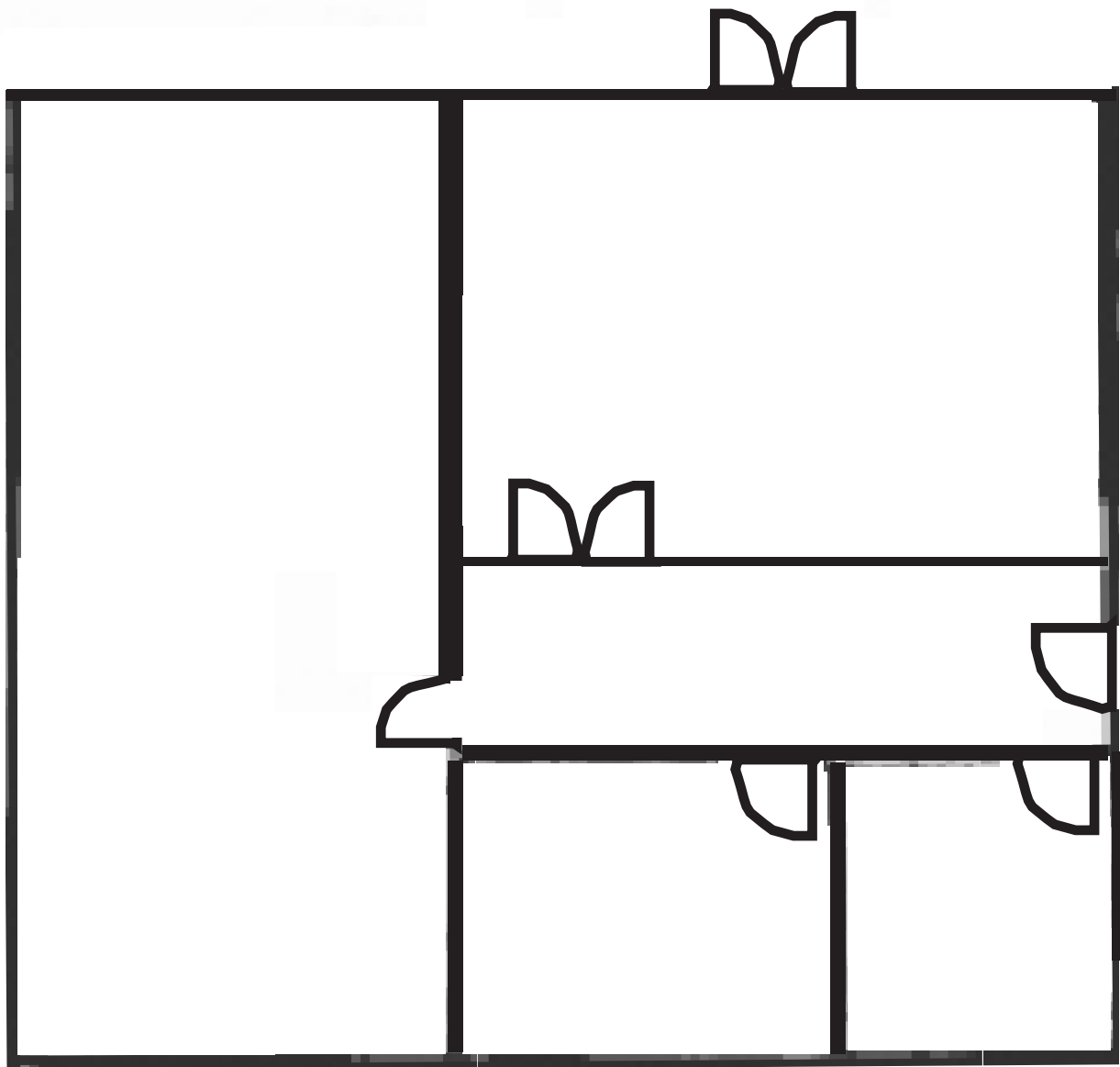
All information furnished regarding property for sale, rental or financing is from sources deemed reliable, but no warranty or representation is made to the accuracy thereof and same is submitted to errors, omissions, change of price, rental or other conditions prior to sale, lease or financing or withdrawal without notice. No liability of any kind is to be imposed on the broker herein.

±877, ±1,433 and/or ±2,906 SF Available

279 E. ARROW HIGHWAY

SAN DIMAS, CA 91773

Suite 105
±2,906 SF



FOR LEASE



COMMERCIAL REAL ESTATE SERVICES

3535 Inland Empire Blvd. • Ontario, CA 91764
ph: 909.989.7771 fx: 909.944.8250
www.lee-assoc.com | Corporate ID # 00976995

Justin Leewood
909.373.2989
jleewood@lee-assoc.com
BRE # 01837452

Todd Launchbaugh, SIOR
909.373.2911
tlaunchbaugh@lee-assoc.com
BRE # 01059250

All information furnished regarding property for sale, rental or financing is from sources deemed reliable, but no warranty or representation is made to the accuracy thereof and same is submitted to errors, omissions, change of price, rental or other conditions prior to sale, lease or financing or withdrawal without notice. No liability of any kind is to be imposed on the broker herein.