



**COLDWELL
BANKER
COMMERCIAL**
DANFORTH

FOR SALE

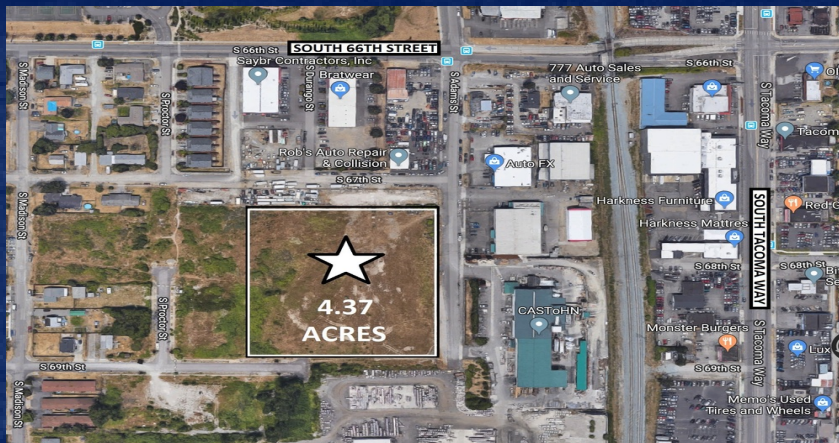
SOUTH TACOMA DEVELOPMENT SITE

SITE ADDRESS
6718 South Adams Street
Tacoma, WA 98409

ASKING PRICE
\$2,200,000 (\$11.55 / SF)

- PROPERTY SUMMARY
- 4.37 Acres
 - Tax Parcels 9260001000, 9260001020, 9260001040
 - M1 Zoning

AREA DESCRIPTION
Prime development site located just off South Tacoma Way near the corner of South 67th Street and South Adams Street.



INDUSTRIAL LAND

Bob Fredrickson
206.595.7232
bfredrickson@cbcworldwide.com

Dominic Temmel
253.273.6474
dtemmel@cbcworldwide.com

©2019 Coldwell Banker Real Estate LLC, dba Coldwell Banker Commercial Danforth. All rights reserved. Coldwell Banker Commercial® and the Coldwell Banker Commercial logo are registered service marks owned by Coldwell Banker Real Estate LLC. Coldwell Banker Real Estate LLC, dba Coldwell Banker Commercial Affiliates fully supports the principles of the Fair Housing Act and the Equal Opportunity Act. Each office is independently owned and operated. The information provided is deemed reliable, but it is not guaranteed to be accurate or complete, and it should not be relied upon as such. This information should be independently verified before any person enters into a transaction based upon it.

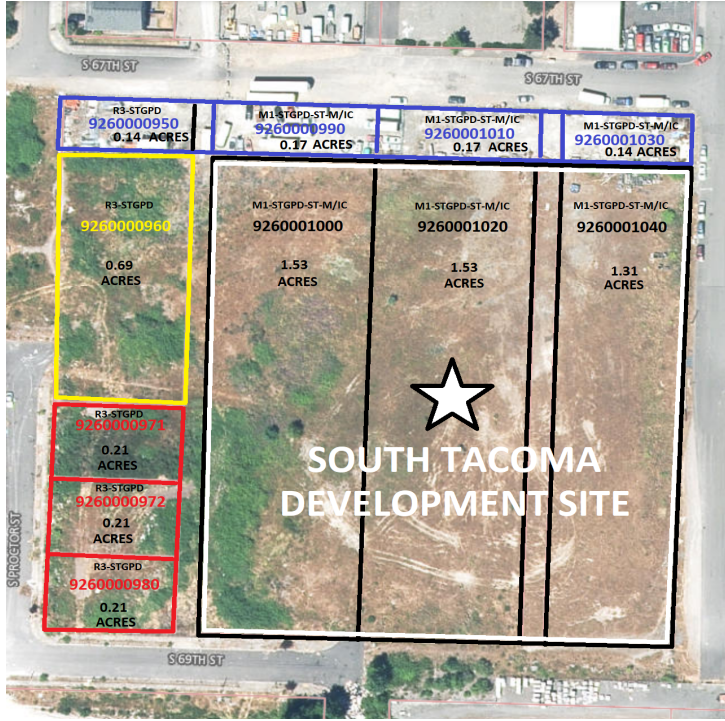
COLDWELL BANKER COMMERCIAL
DANFORTH
33313 1st Way S, Federal Way, WA 98003
253.874.3200



SALE

SOUTH TACOMA DEVELOPMENT SITE

6718 S Adams St, Tacoma, WA 98409



OFFERING SUMMARY

Sale Price: \$2,200,000

Lot Size: 4.37 Acres

Zoning: M1

Market: South Tacoma

Price / SF: \$11.55 / SF

PROPERTY OVERVIEW

Prime 4.37 acres development site for sale located just off South Tacoma Way near the corner of South 67th Street and South Adams Street. Great central location with easy access to the freeways. Ideal development site for warehouse and light industrial uses.

PROPERTY HIGHLIGHTS

- M 1 Zoning allows a variety of commercial, residential and light industrial uses.
- Located near the corner of South 67th Street and South Adams Street.
- Close to the Metro Parks STAR Center
- Convenient access to the freeways (I-5, SR 16 & SR 512)
- Great central location between Seattle and Portland
- Utilities in Street

CBCWORLDWIDE.COM

Bob Fredrickson
206.595.7232
bfredrickson@cbcworldwide.com

Dominic Temmel
253.273.6474
dtemmel@cbcworldwide.com



**COLDWELL
BANKER
COMMERCIAL**

DANFORTH



SOUTH TACOMA DEVELOPMENT SITE

6718 S Adams St, Tacoma, WA 98409

SALE



CBCWORLDWIDE.COM

Bob Fredrickson
206.595.7232
bfredrickson@cbcworldwide.com

Dominic Temmel
253.273.6474
dtemmel@cbcworldwide.com



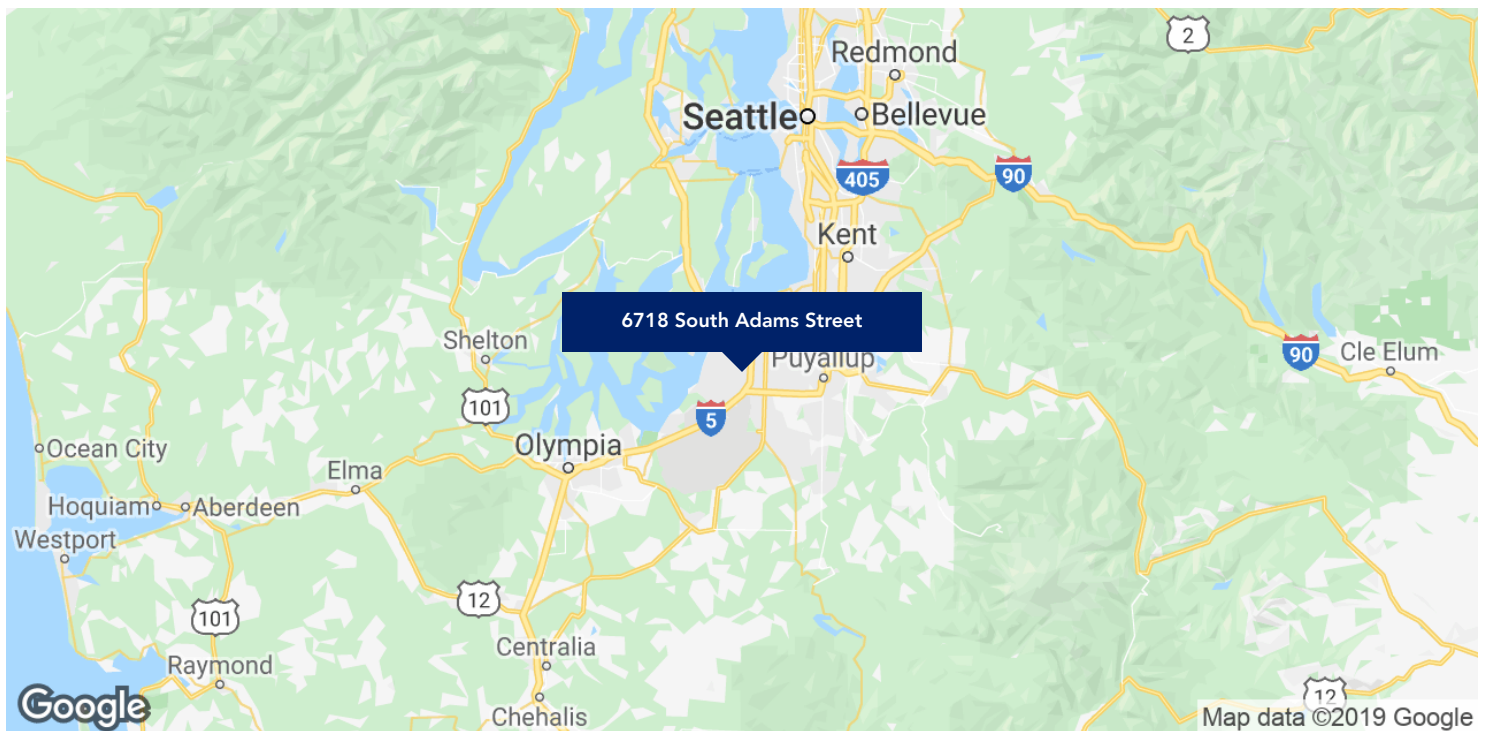
**COLDWELL
BANKER
COMMERCIAL**

DANFORTH



SOUTH TACOMA DEVELOPMENT SITE

6718 S Adams St, Tacoma, WA 98409



CBCWORLDWIDE.COM

Bob Fredrickson
 206.595.7232
 bfredrickson@cbcworldwide.com

Dominic Temmel
 253.273.6474
 dtemmel@cbcworldwide.com



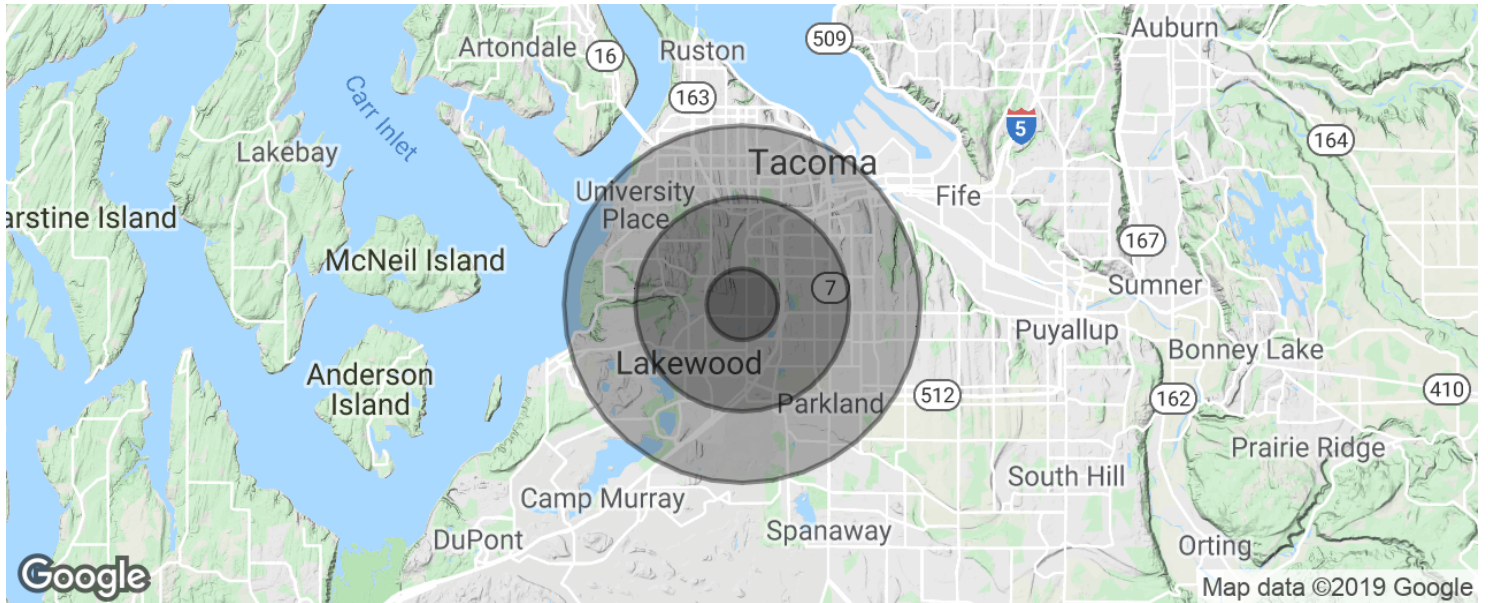
**COLDWELL
 BANKER
 COMMERCIAL**

DANFORTH



SOUTH TACOMA DEVELOPMENT SITE

6718 S Adams St, Tacoma, WA 98409



POPULATION	1 MILE	3 MILES	5 MILES
Total population	13,097	115,667	309,476
Median age	29.9	31.9	33.5
Median age (Male)	29.2	30.7	32.0
Median age (Female)	30.2	33.4	35.0
HOUSEHOLDS & INCOME	1 MILE	3 MILES	5 MILES
Total households	5,062	46,892	122,119
# of persons per HH	2.6	2.5	2.5
Average HH income	\$52,510	\$50,878	\$55,353
Average house value	\$208,739	\$257,128	\$256,794

* Demographic data derived from 2010 US Census

CBCWORLDWIDE.COM

Bob Fredrickson
206.595.7232
bfredrickson@cbcworldwide.com

Dominic Temmel
253.273.6474
dtemmel@cbcworldwide.com



**COLDWELL
BANKER
COMMERCIAL**

DANFORTH