

the
EMBASSY
portfolio



3560 W MARKET STREET

Located in the heart of Fairlawn, outside of the Parkway, this sister building offers all of the amenities of being in the Park. It is close to many amenities and offers outstanding signage opportunities.

- *Building conference room and kitchen area*
- *Street front signage*

AVAILABILITIES

Suite 115 - 4,759 RSF • Suite 200 - 6,976 RSF

Suite 205 - 1,500 RSF • Suite 310 - 1,888 RSF

(Suite 115/200 - 11,735 RSF via internal staircase)



WWW.CBRE.US/EMBASSYPORTFOLIO

FOR MORE
INFORMATION,
PLEASE CONTACT:

susan lines
+1 330 670 4411
susan.lines@cbre.com

gary rickel
+1 330 670 4414
gary.rickel@cbre.com

zada brenner
+1 330 670 4418
zada.brenner@cbre.com

CBRE

the
EMBASSY
portfolio



Rental Rate: \$18.50 per RSF

- Rates include parking, in-suite cleaning, water, sewer, and gas.
- Tenant pays in-suite electric and pro-rata share of common area electric.

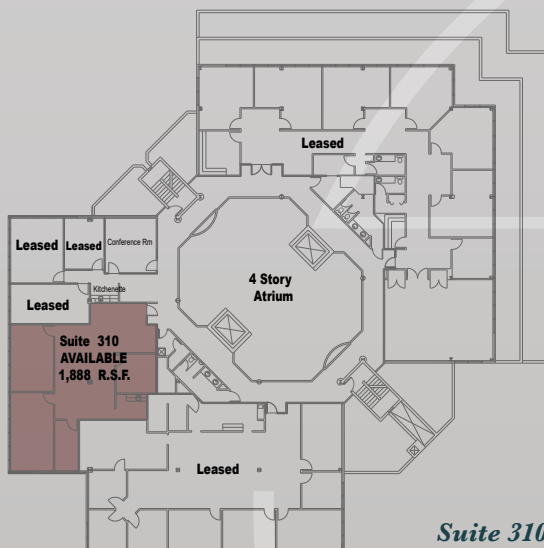
Suite 115 - 4,759 RSF

(Suite 115/200 - 11,735 RSF via internal staircase)



Suite 200 - 6,976 RSF

Suite 205 - 1,500 RSF



Suite 310 - 1,888 RSF

3560 W Market Street, Akron, Ohio 44333

FOR MORE
INFORMATION,
PLEASE CONTACT:

susan lines
+1 330 670 4411
susan.lines@cbre.com

gary rickel
+1 330 670 4414
gary.rickel@cbre.com

zada brenner
+1 330 670 4418
zada.brenner@cbre.com

© 2019 CBRE, Inc. All rights reserved. This information has been obtained from sources believed reliable, but has not been verified for accuracy or completeness. Any projections, opinions, or estimates are subject to uncertainty. The information may not represent the current or future performance of the property. You and your advisors should conduct a careful, independent investigation of the property and verify all information. Any reliance on this information is solely at your own risk. CBRE and the CBRE logo are service marks of CBRE, Inc. and/or its affiliated or related companies in the United States and other countries. All other marks displayed on this document are the property of their respective owners. Photos herein are the property of their respective owners and use of these images without the express written consent of the owner is prohibited.

