

Historic “Old Main” Office Building For Sale

102 N. Krohn Place

Sioux Falls, SD 57103

For Sale | Owner-Occupant or Investment

Michael Martin

CCIM

605 261 2777

mmartin@naisiouxfalls.com

Troy Fawcett

President, CCIM, SIOR

605 321 2199

tfawcett@naisiouxfalls.com



2500 W 49th Street Suite 100
Sioux Falls, SD 57105
605 357 7100
naisiouxfalls.com

NAI Sioux Falls

SPECS

102 N. Krohn Place
Sioux Falls, SD 57103

Building size: 23,336 sq. ft.
Main Floor: 7,969 sq. ft.
Lower Level: 7,826 sq. ft.
Upper Level: 7,541 sq. ft.

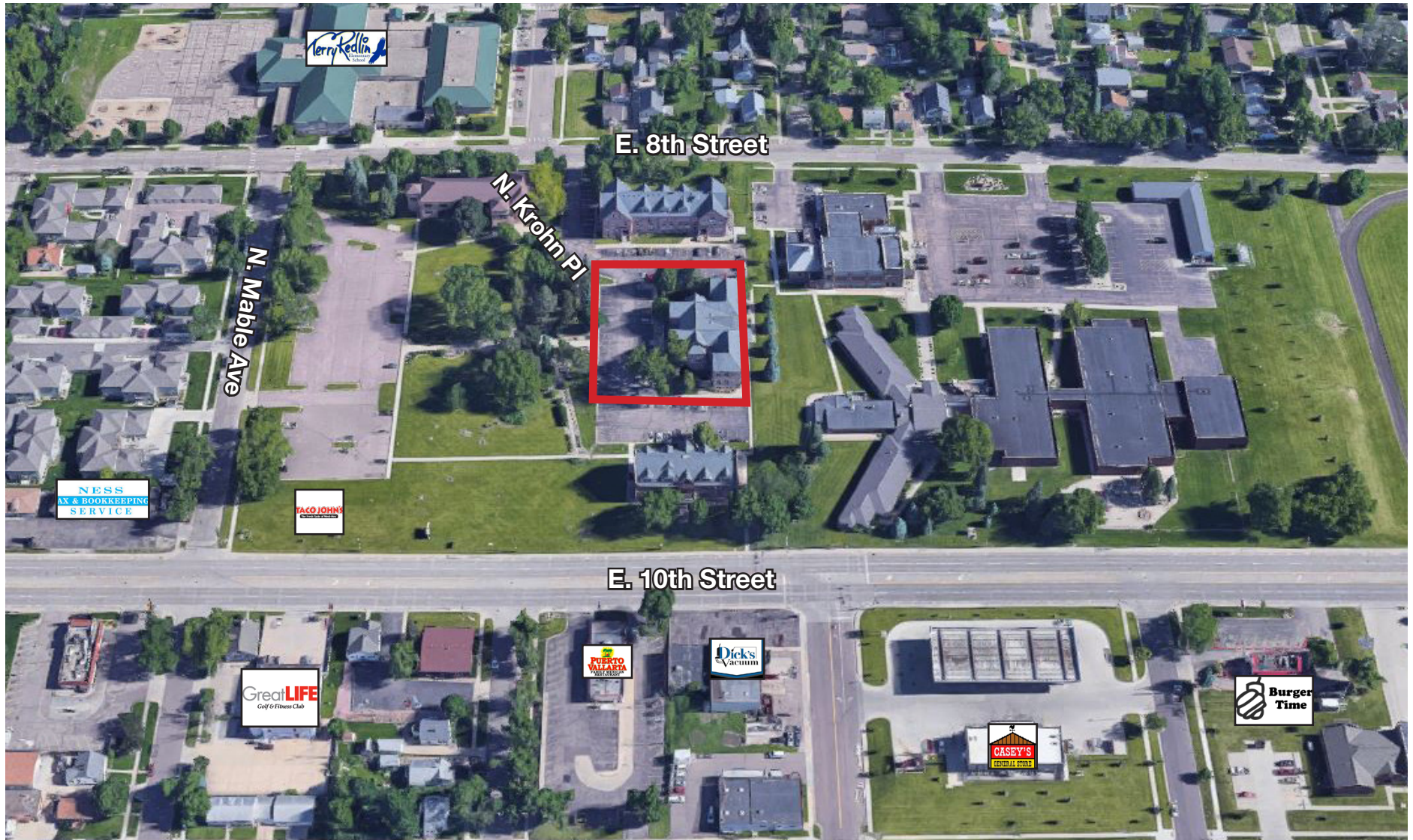
Lot size: .74 acres
Year Built: 1883
Exterior Finish: Cut Stone
Office Space: Main & Second Level
Parking: 30 paved, on-site spaces
Heating: Forced Air
Air Conditioning: Central Air Common Duct
Roof: Asphalt Shingles

- Located on the former CSD campus
- On the National Registry of Historical Places
- Nestled between East 10th & East 8th Streets
- .7 miles west of 1-229
- 1.8 miles east of downtown Sioux Falls
- Area neighbors include: Ness Tax & Bookkeeping, Terry Redlin Elementary School, Taco John's, Puerto Vallarta, Casey's General Store, Burger Time, Dick's Vacuum

PRICE REDUCED
\$1,200,000 (\$51.42/ sq. ft.)

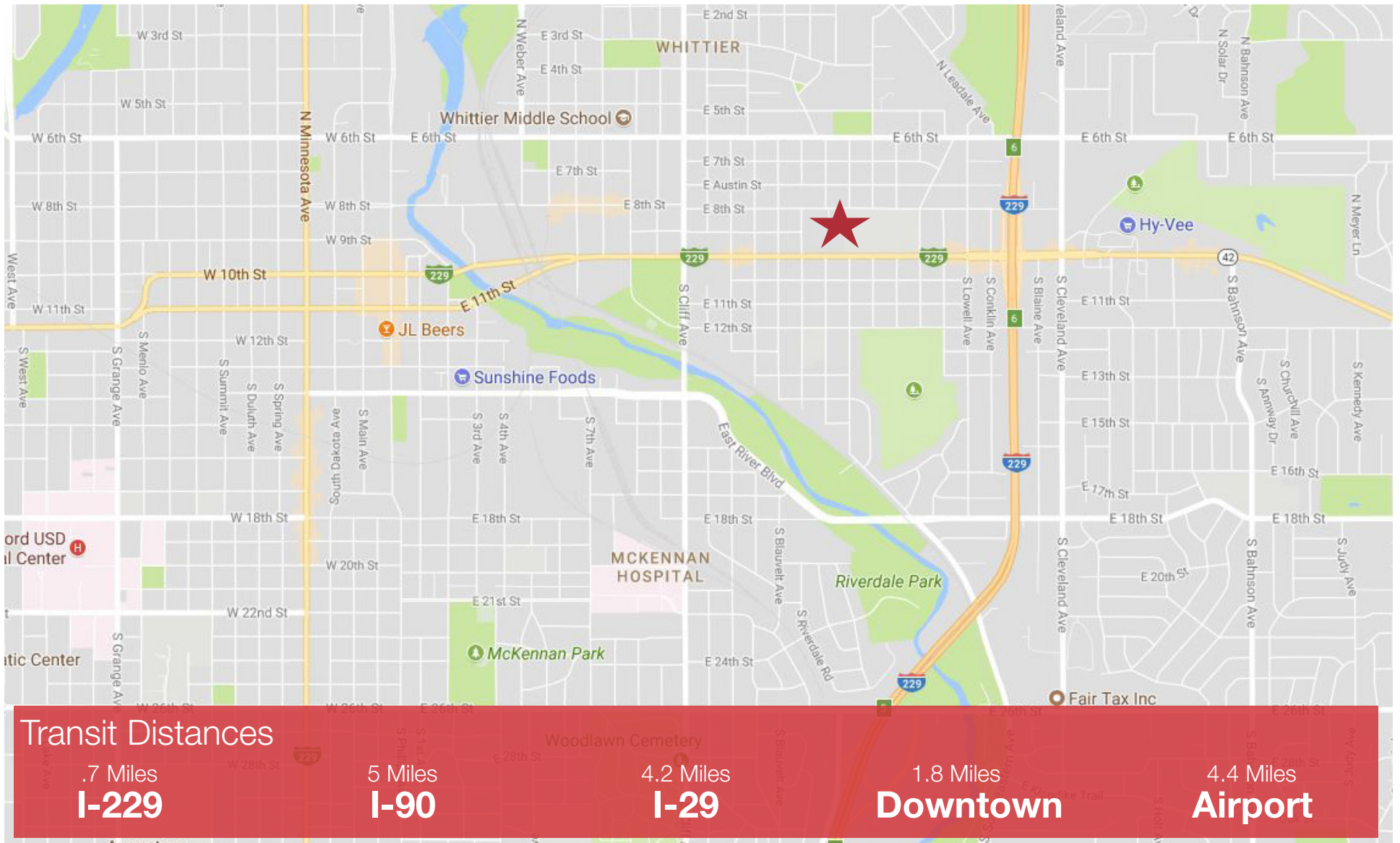
AERIAL

102 N. Krohn Place
Sioux Falls, SD 57103



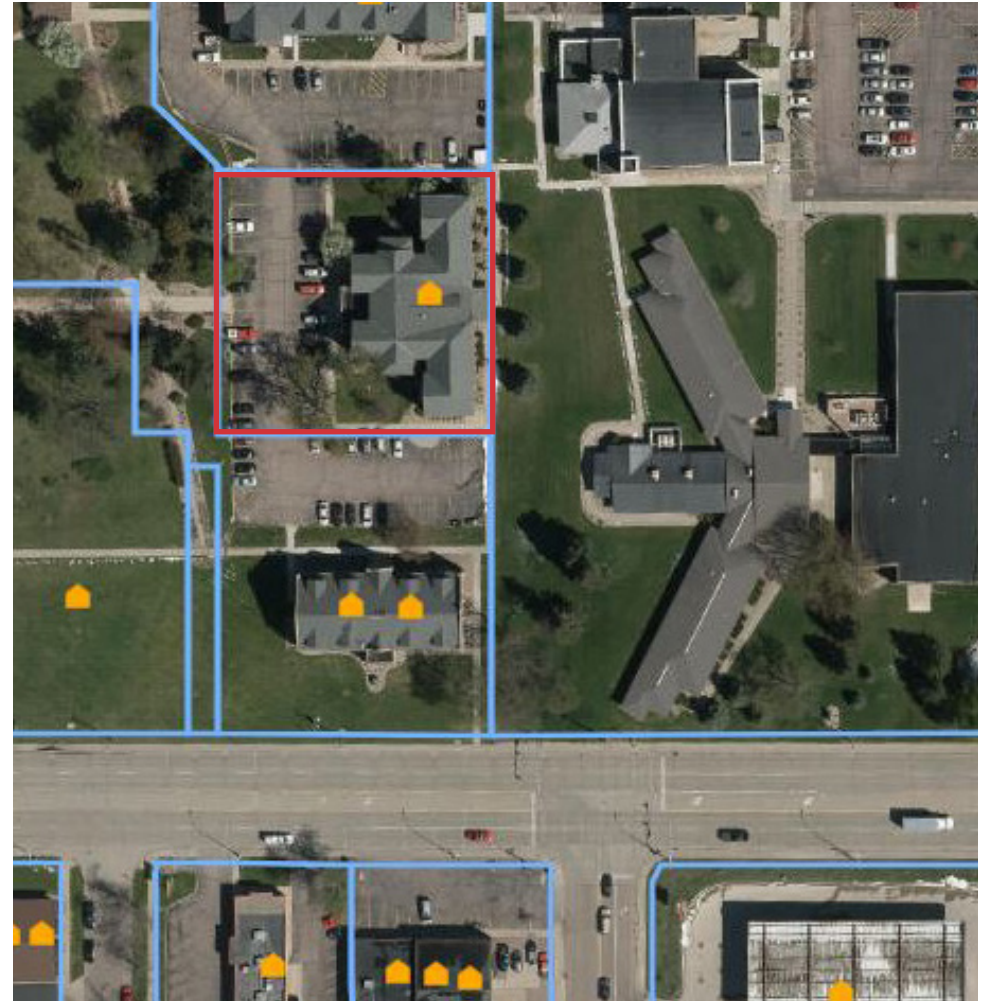
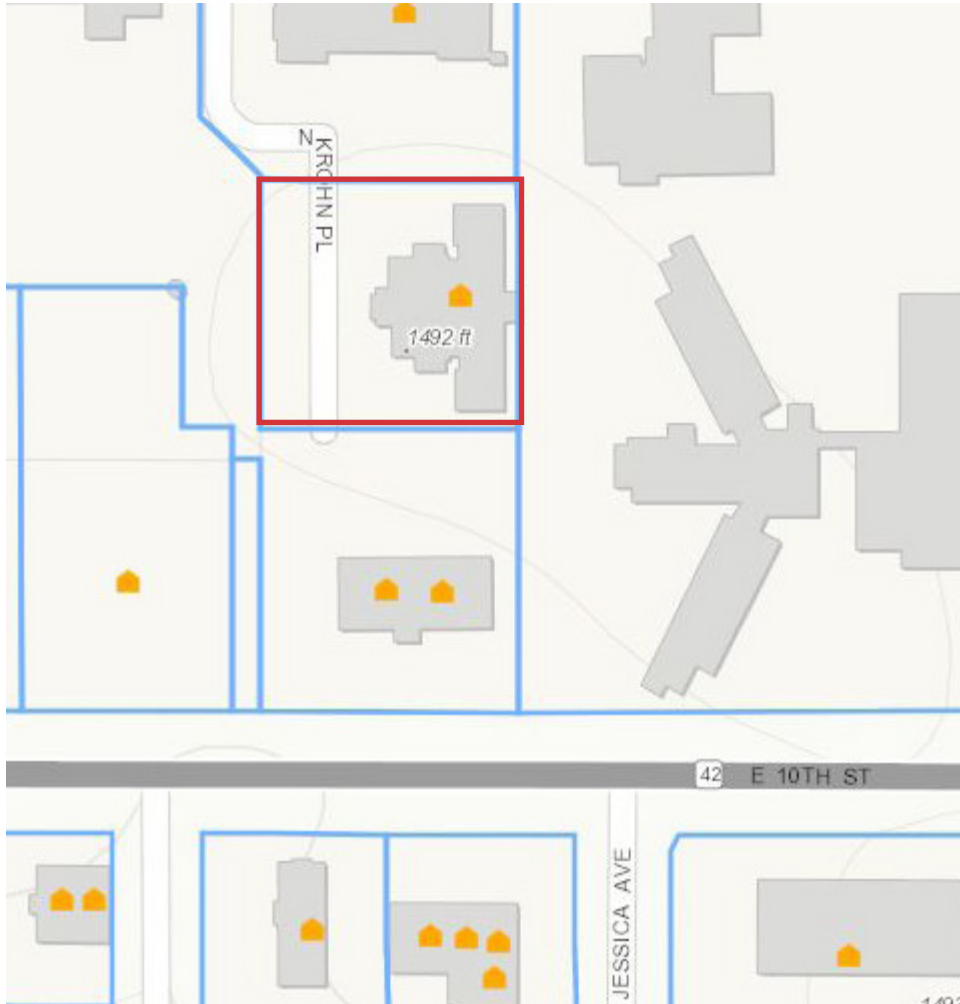
AREA MAP

102 N. Krohn Place
Sioux Falls, SD 57103



SITE PLAN

102 N. Krohn Place
Sioux Falls, SD 57103



PHOTOS

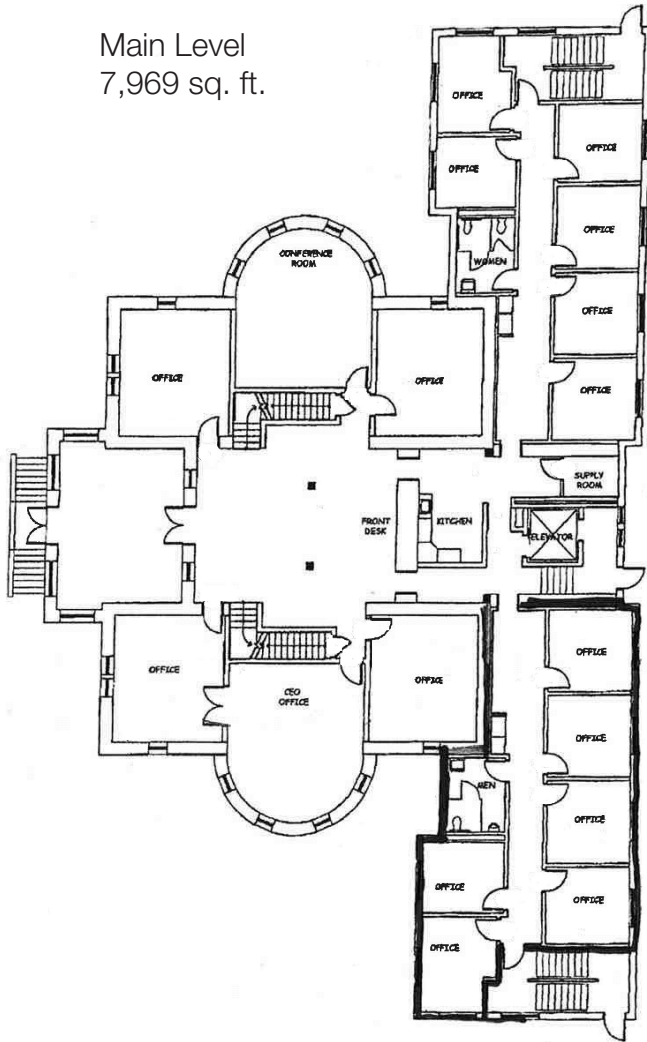
102 N. Krohn Place
Sioux Falls, SD 57103



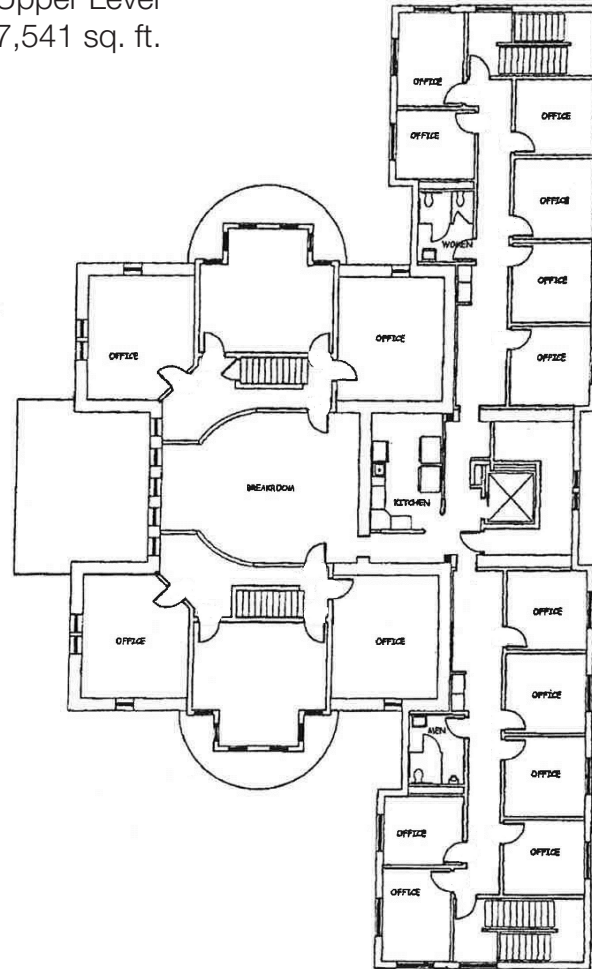
FLOOR PLANS

102 N. Krohn Place
Sioux Falls, SD 57103

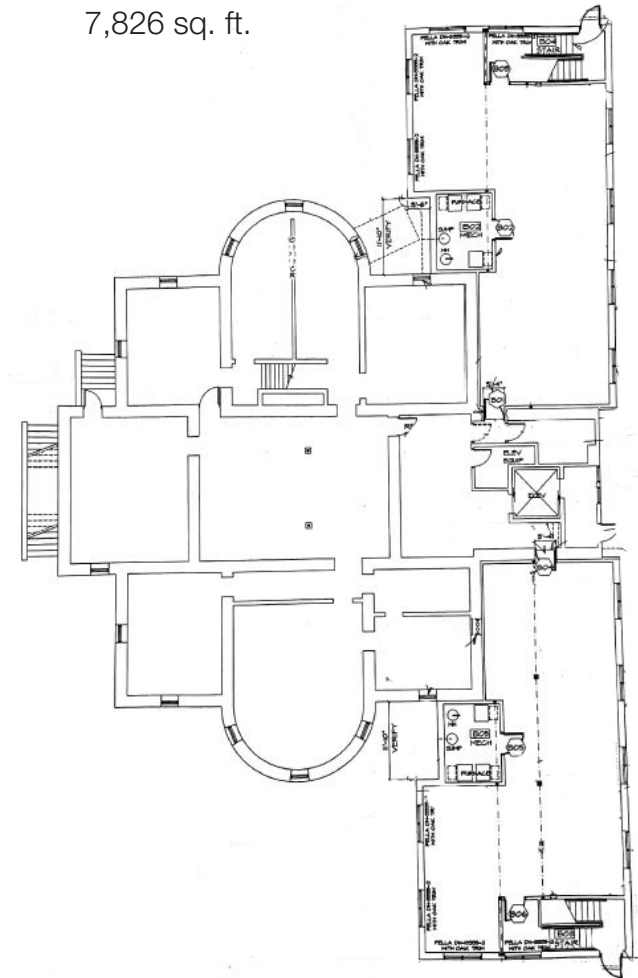
Main Level
7,969 sq. ft.



Upper Level
7,541 sq. ft.



Lower Level
7,826 sq. ft.



HISTORY

102 N. Krohn Place
Sioux Falls, SD 57103

Designed by Wallace LeRoy Dow, "Old Main" was originally built in 1883 and is an extremely fine composition in the Romanesque style. Originally, the central bay was topped with a cupola and the entrance was recessed. A wooden porch was built flush with the projecting side bays. The present entrance is a 1937 addition constructed of stone.

Currently, the building is used as a multi-tenant office building.

