



FOR LEASE

# PACIFIC COMMERCIAL BUILDING

240 SECOND AVENUE SOUTH :: SEATTLE, WASHINGTON

The newly renovated Pacific Commercial Building offers the character of a turn-of-the-century post and beam building, with the safety of a complete seismic upgrade and the convenience of all new mechanical and electrical infrastructure.



# PACIFIC COMMERCIAL BUILDING



## KEY FEATURES

- Renovated brick and beam building filled with character and personality
- Heartwood-designed lobby
- Views of Pioneer Square, Elliott Bay and adjacent Waterfall Park
- Operable windows
- Tall, exposed ceilings
- Seismically upgraded in 2010 — one of the few Pioneer Square buildings that comply with the revised seismic standards put in place after the 2001 Nisqually earthquake



Fifth floor office



Fourth floor office

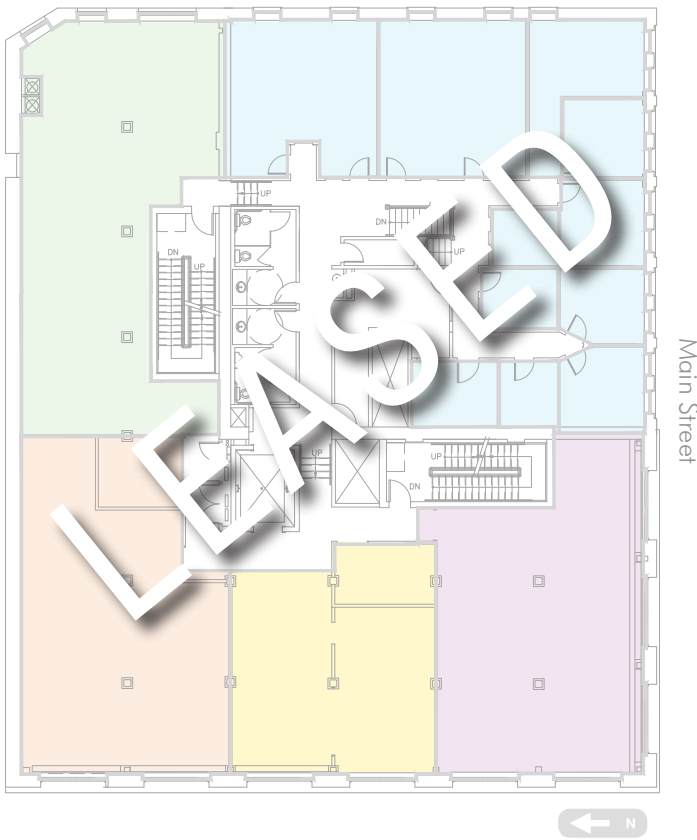


Fourth floor office

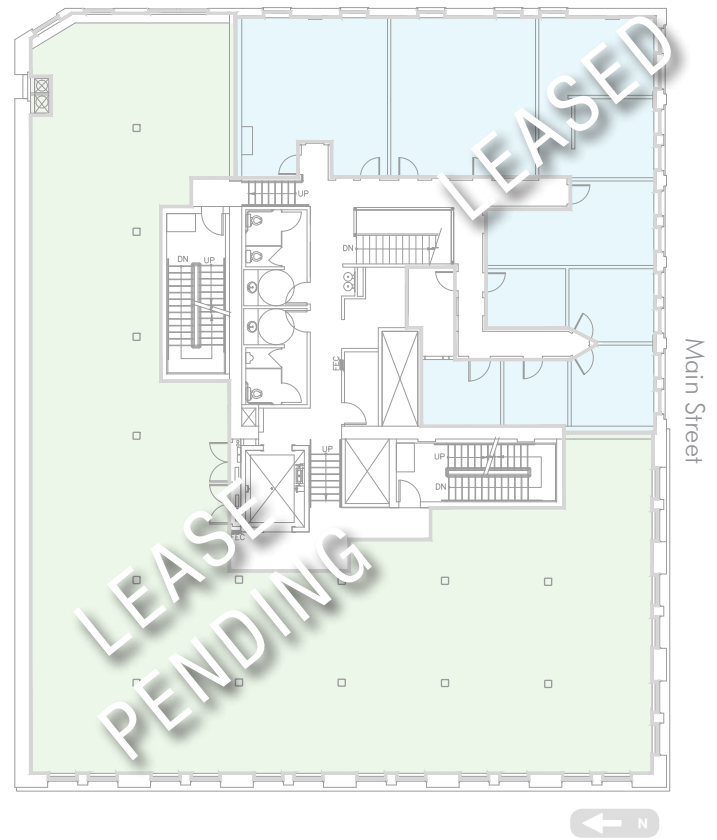


View from fifth floor

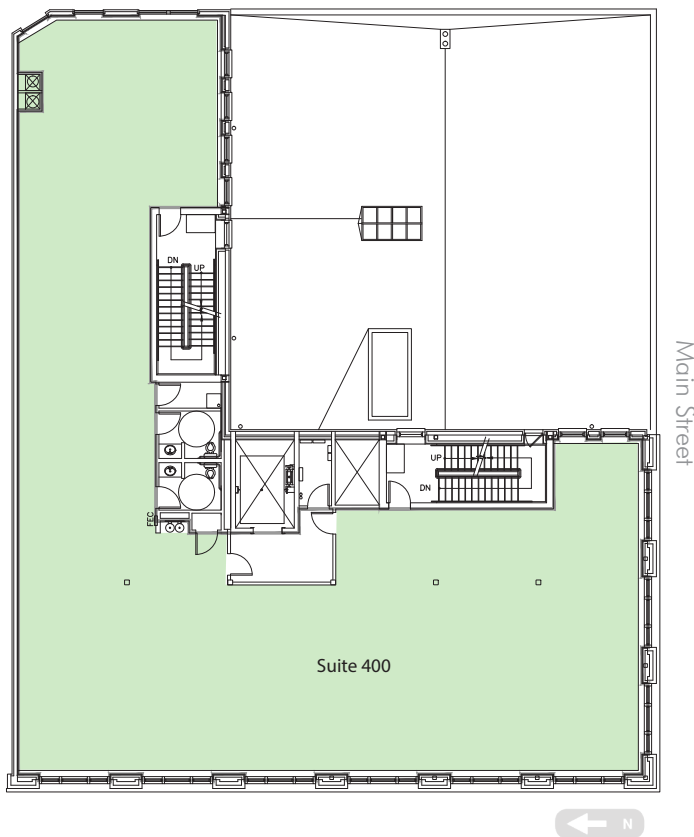
SECOND FLOOR



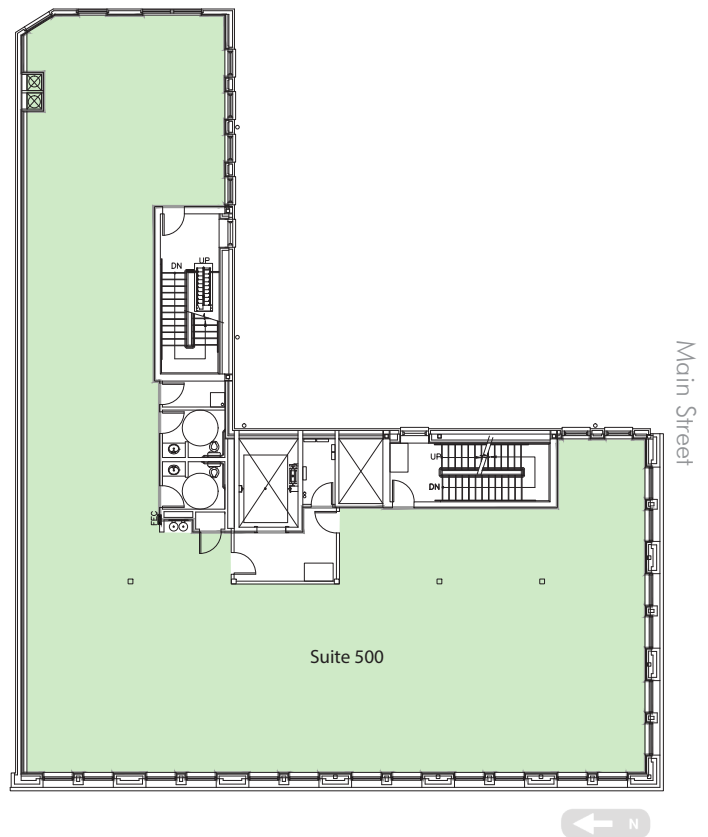
THIRD FLOOR



FOURTH FLOOR ±5,316 RSF



FIFTH FLOOR ±5,303 RSF

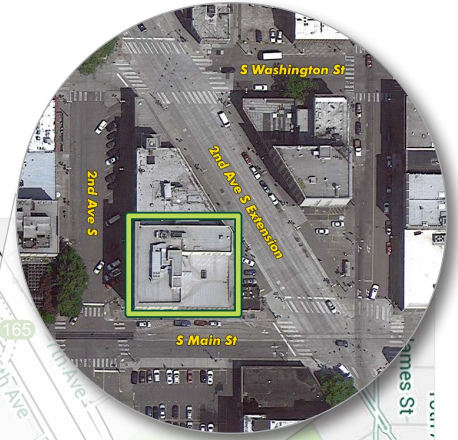
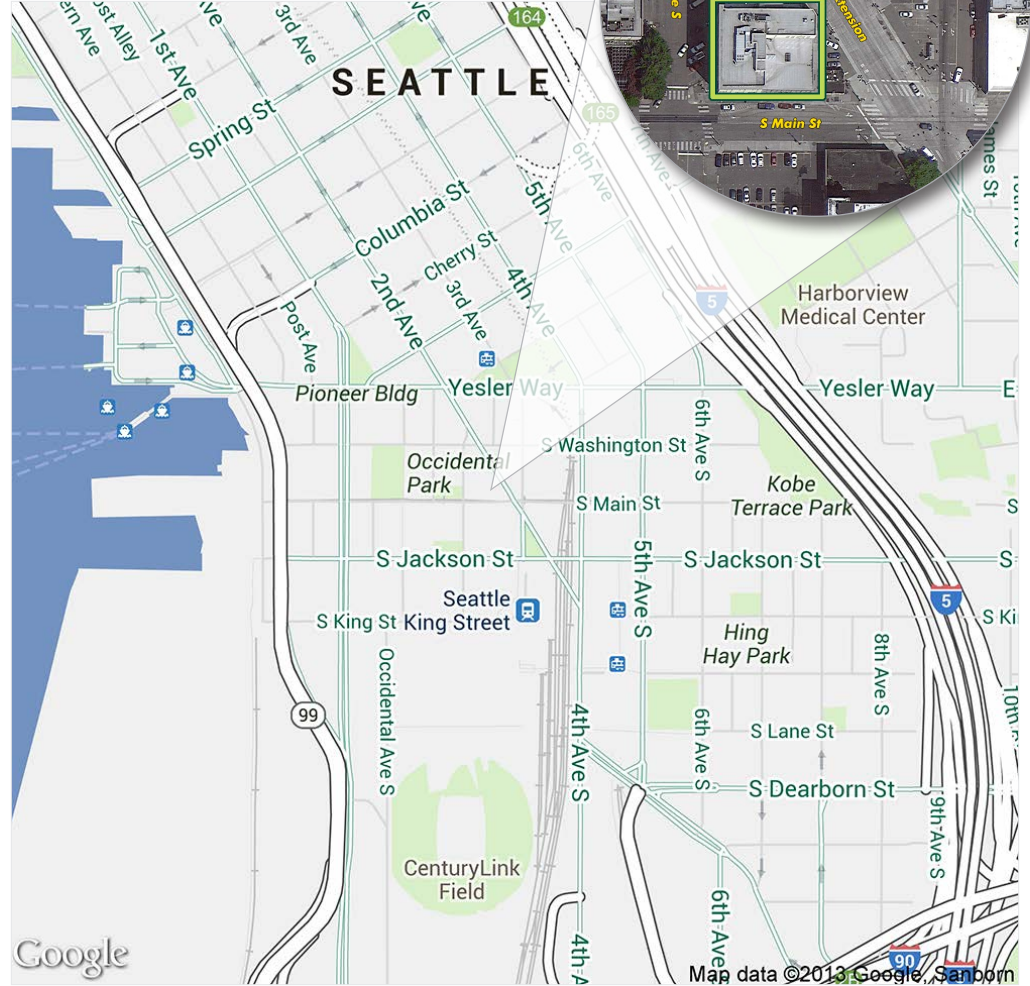


NOTE: All square footage numbers are approximate and subject to confirmation by owners according to BOMA standards.

# PACIFIC COMMERCIAL BUILDING



240 SECOND AVENUE SOUTH  
SEATTLE, WASHINGTON



FOR MORE INFORMATION  
PLEASE CONTACT

Sally Patterson

+1 206 292 6142

sally.patterson@cbre.com

www.cbre.com/sally.patterson

CBRE, Inc.

1420 Fifth Avenue

Suite 1700

Seattle, WA 98101

+1 206 292 6000 T

+1 206 292 6033 F

www.cbre.com/seattle



**CBRE**



© 2013 CBRE, Inc. This information has been obtained from sources believed reliable. We have not verified it and make no guarantee, warranty or representation about it. Any projections, opinions, assumptions or estimates used are for example only and do not represent the current or future performance of the property. You and your advisors should conduct a careful, independent investigation of the property to determine to your satisfaction the suitability of the property for your needs. Photos herein are the property of their respective owners and use of these images without the express written content of the owner is prohibited. cjm 11-20-13