

# Industrial/Creative Office in SOMA

AVAILABLE JULY 1, 2018

# 715 BRYANT STREET

SUITE 101  
FOR LEASE

±1,480 RSF

San Francisco, California 94107



**\$5,650/mo MG (\$235/mo CAM)**  
(includes water)

- First (ground) floor at front of building, entry from lobby
- Glass blocks facade, 3.5 x 7 ft. steel door direct entry from sidewalk
- Located near Hwy 101, 80, and 280 ramps, Walking Distance from CalTrain
- In-suite kitchen area, Conference room, ADA bathroom with shower, and closet / storage
- Polished stained concrete floor, 14 ft. exposed ceiling, dimmable LED track lightings
- 3 x 100 Amps power
- Tenant improvement permitted
- Legal office use
- Utilities separately metered
- One year minimum

We have obtained the above information from sources we believe to be reliable, but no representations of any kind, expressed to implied, are being made as to the accuracy of such information.

**EXCLUSIVE LISTING BROKER:**

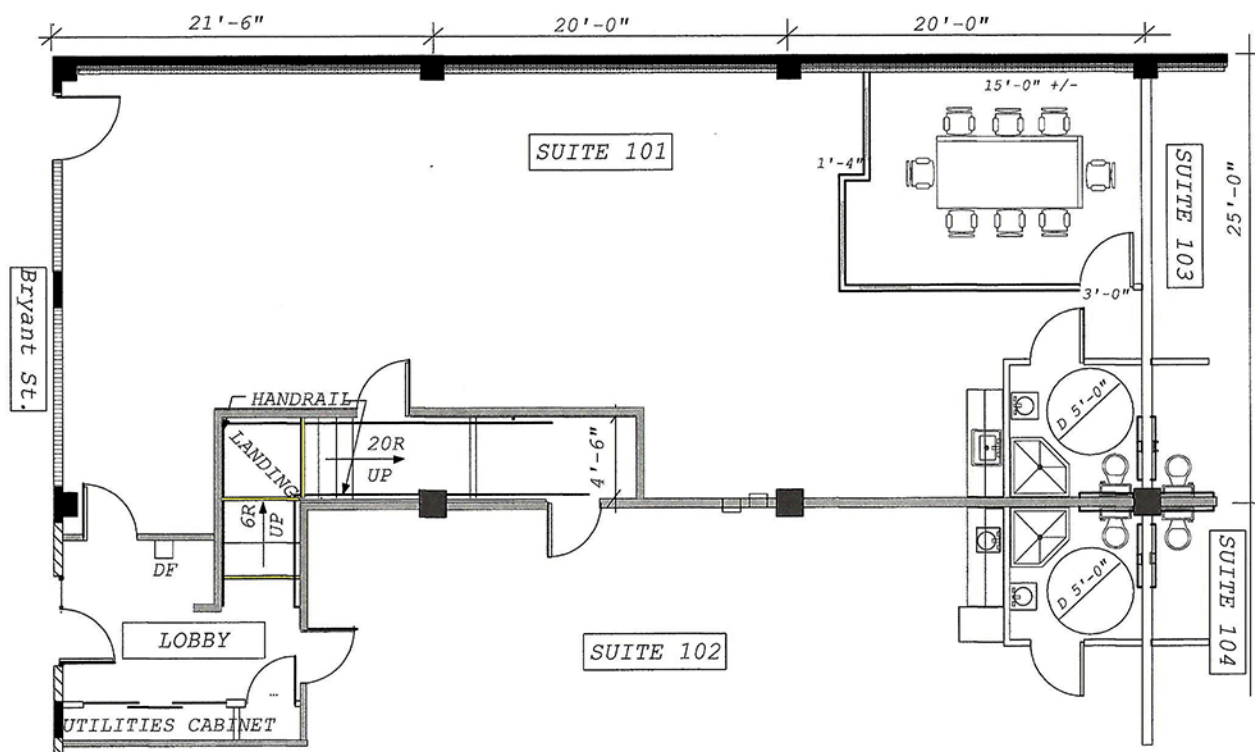
**ETHAN SOMMER**  
Vice President

**(415) 358-2660**  
ethan@DPWcre.com

388 Market Street, Suite 800  
San Francisco, California 94111  
CA BRE: 01925416

 **Dunhill Partners**  
WEST

5/10/18



EXCLUSIVE LISTING BROKER:

**ETHAN SOMMER**  
Vice President

**(415) 358-2660**  
ethan@DPWcre.com

388 Market Street, Suite 800  
San Francisco, California 94111  
CA BRE: 01925416

