

For Lease

±1,375-3,438 SF

Retail Property



## 1112 N. Main Street

Summerville, South Carolina 29483

### Property Description

Suite E (±1,375 SF) & Suite F (±2,063 SF endcap) available for lease in the Roper St. Francis Hospital anchored retail center located near the intersection of N. Main and Berlin G. Myers Parkway. This center is located along the busiest, most desirable stretch of retail in the market.

### Property Highlights

- Located in the high traffic section of N. Main Street
- First center on N. Main Street that does not have a median restricting access
- Excellent signage opportunity on N. Main
- 55,200 vehicles per day
- TMS #: 232-00-01-123
- Lease Rate: \$27 PSF, NNN (\$5.34/SF)



For more information

**Will Sherrod, CCIM**

843 364 3796

wsherrod@naicharleston.com



# Additional Photos





# Retailer Map



**SITE**

Google

Map data © 2019 Imagery © 2019, Maxar Technologies, U.S. Geological Survey, USDA Farm Service Agency

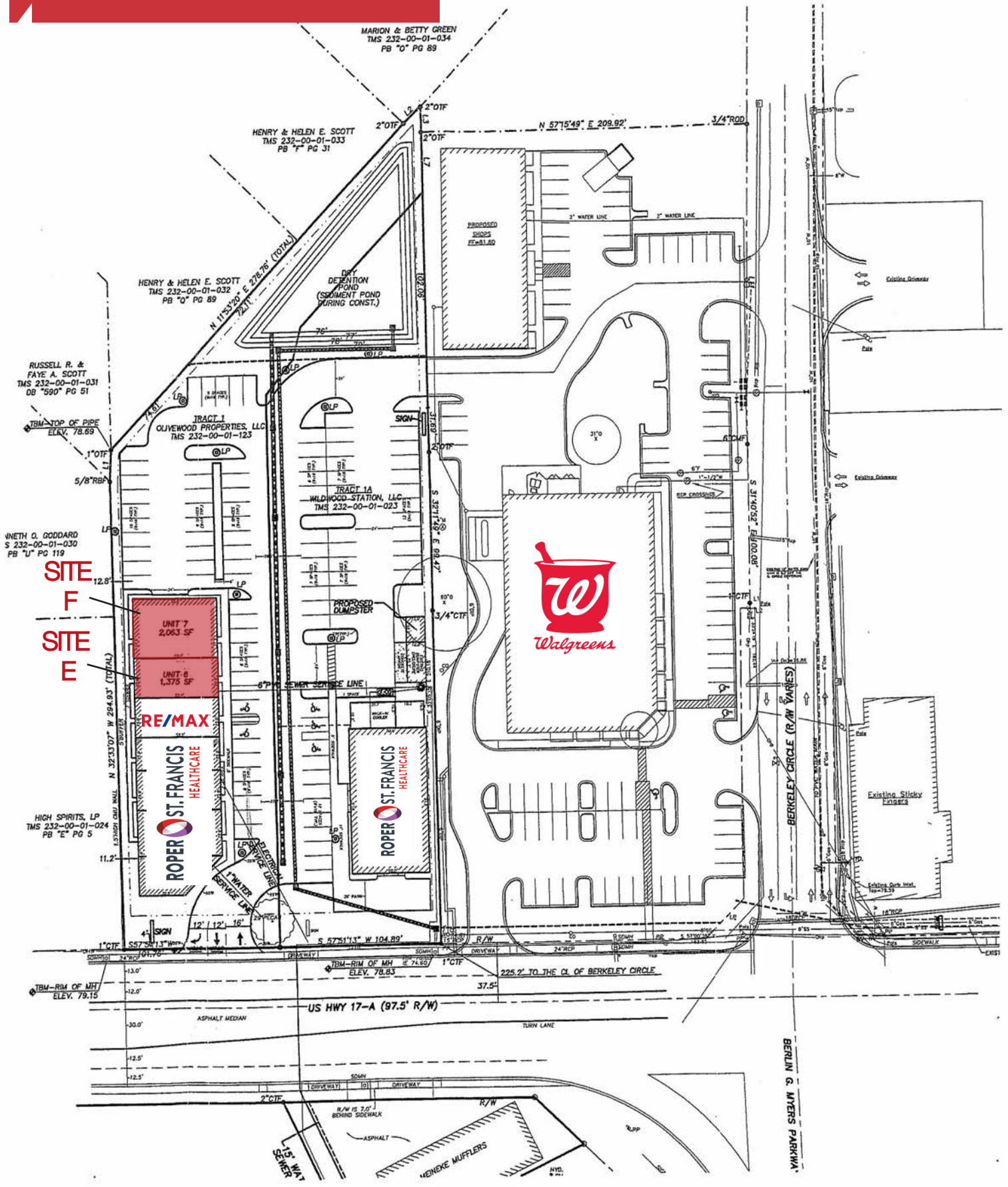
# NAI Charleston

The information contained herein has been given to us by the owner of the property or other sources we deem reliable. We have no reason to doubt its accuracy, but we do not guarantee it. All information should be verified prior to purchase or lease.

141 Williman Street  
Charleston, SC 29403  
843 720 4944 tel  
[naicharleston.com](http://naicharleston.com)

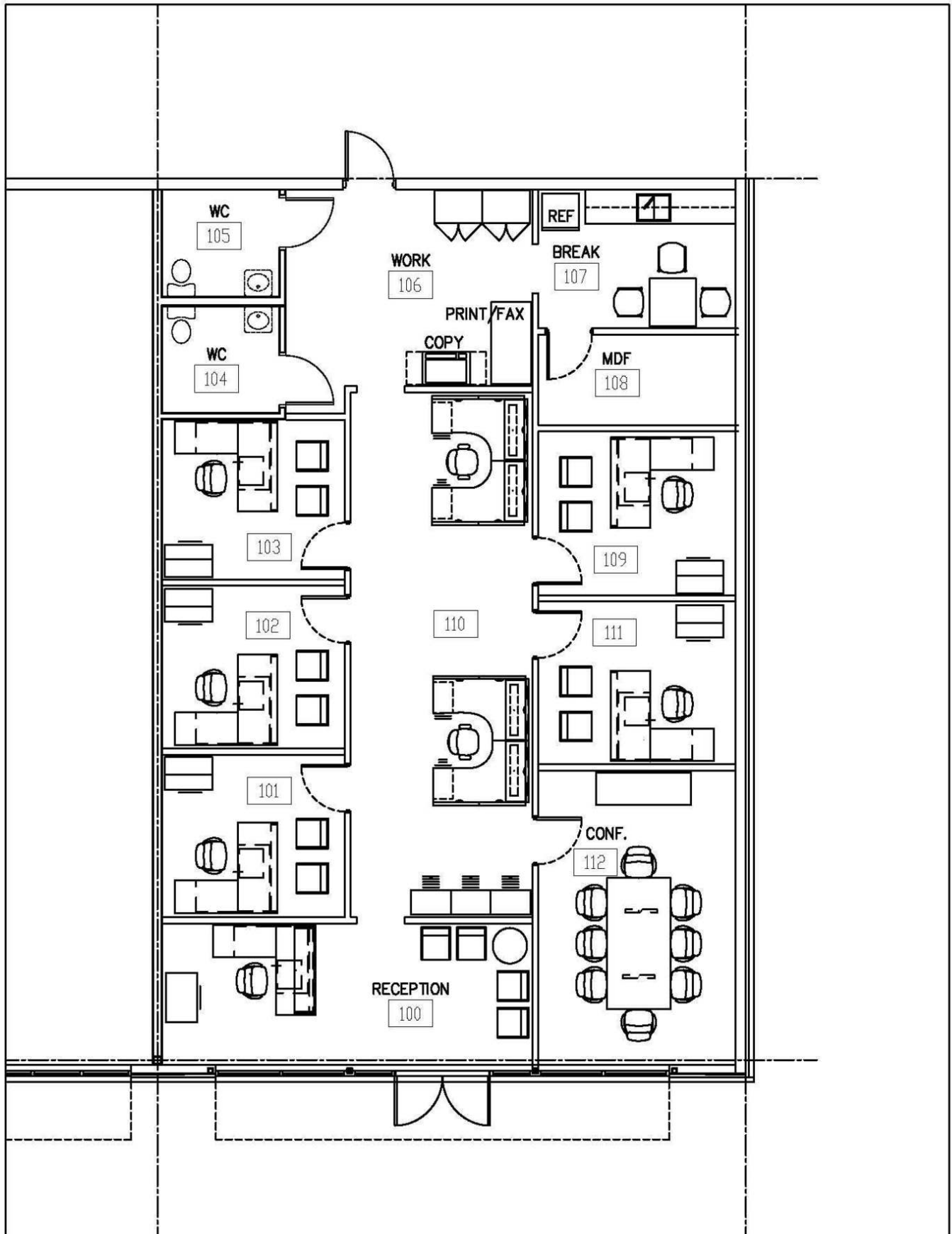


# Site Plan





# Floor Plan







# Contact Us

Will Sherrod, CCIM

Broker

843.364.3796

[wsherrod@naicharleston.com](mailto:wsherrod@naicharleston.com)

NAI Charleston

141 Williman Street

Charleston, SC 29403

843.720.4944

[naicharleston.com](http://naicharleston.com)

*DISCLAIMER: The information contained herein has been given to us by the owner of the property or other sources we deem reliable. We have no reason to doubt its accuracy, but we do not guarantee it. All information should be verified prior to purchase or lease.*