

AmberGlen Business Center

1925 NW AmberGlen Pkwy
Beaverton, OR 97006

\$24.00 Full Service



Features

The 1925 Building sets a new standard for class A office space in the Sunset Corridor. The four story L-shaped building combines classic and contemporary elements to create a business environment in which tenants enjoy solid quality and technical innovation. The 95,386 square foot building can accommodate large or small tenants through rectangularly-shaped relatively column-free space. You'll be surrounded by acres of award-winning landscaping and convenient parking at an ample 4.1/1000 ratio for tenants and visitors. The 1925 Building is located at the corner of Cornell Road and AmberGlen Parkway, offering high visibility from Cornell Road and ease of access from Highway 26.

AVAILABLE SPACE

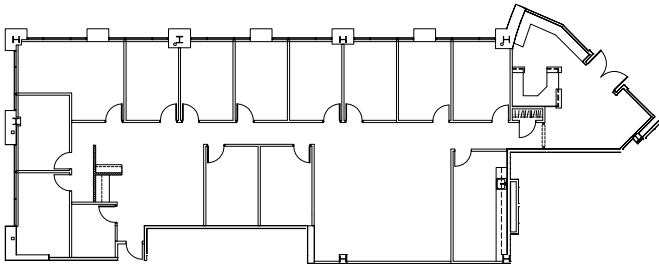
Suite	Square Footage
105	4,522
150	3,539
270	3,497
200-260	15,608
400	19,208

Contact

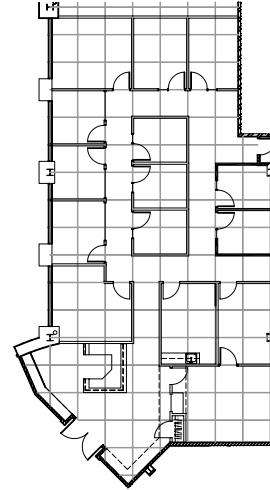
Keith Young
503.221.2275
kyoung@kiddermathews.com

AmberGlen Business Center

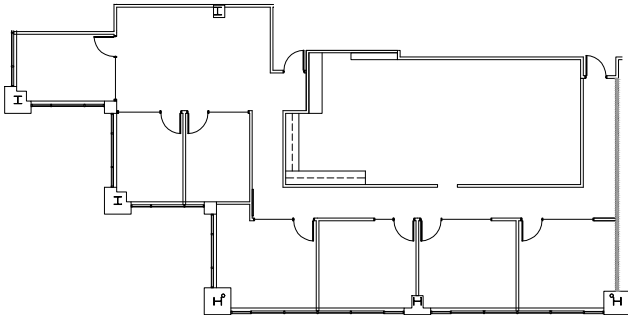
First Floor | Suite 105 | ±4,522 RSF



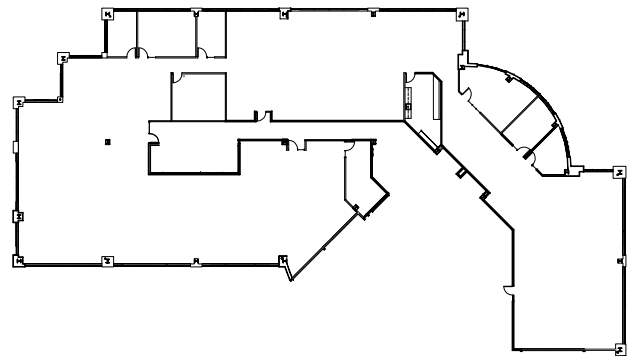
First Floor | Suite 150 | ±3,539 RSF



First Floor | Suite 270 | ±3,497 RSF



Second Floor | Suite 200-260 | ±15,608 RSF

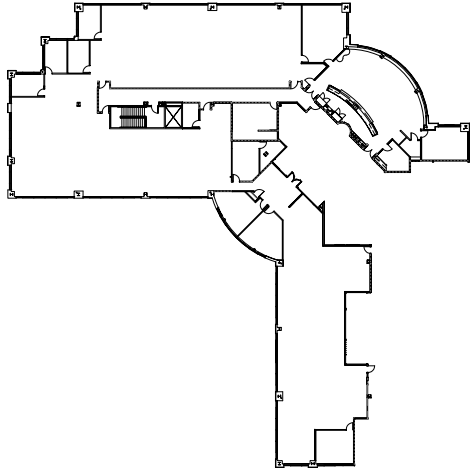


Contact

Keith Young
503.221.2275
kyoung@kiddermathews.com

AmberGlen Business Center

Fourth Floor | Suite 400 | ±19,208 RSF



Contact

Keith Young
503.221.2275
kyoung@kiddermathews.com
