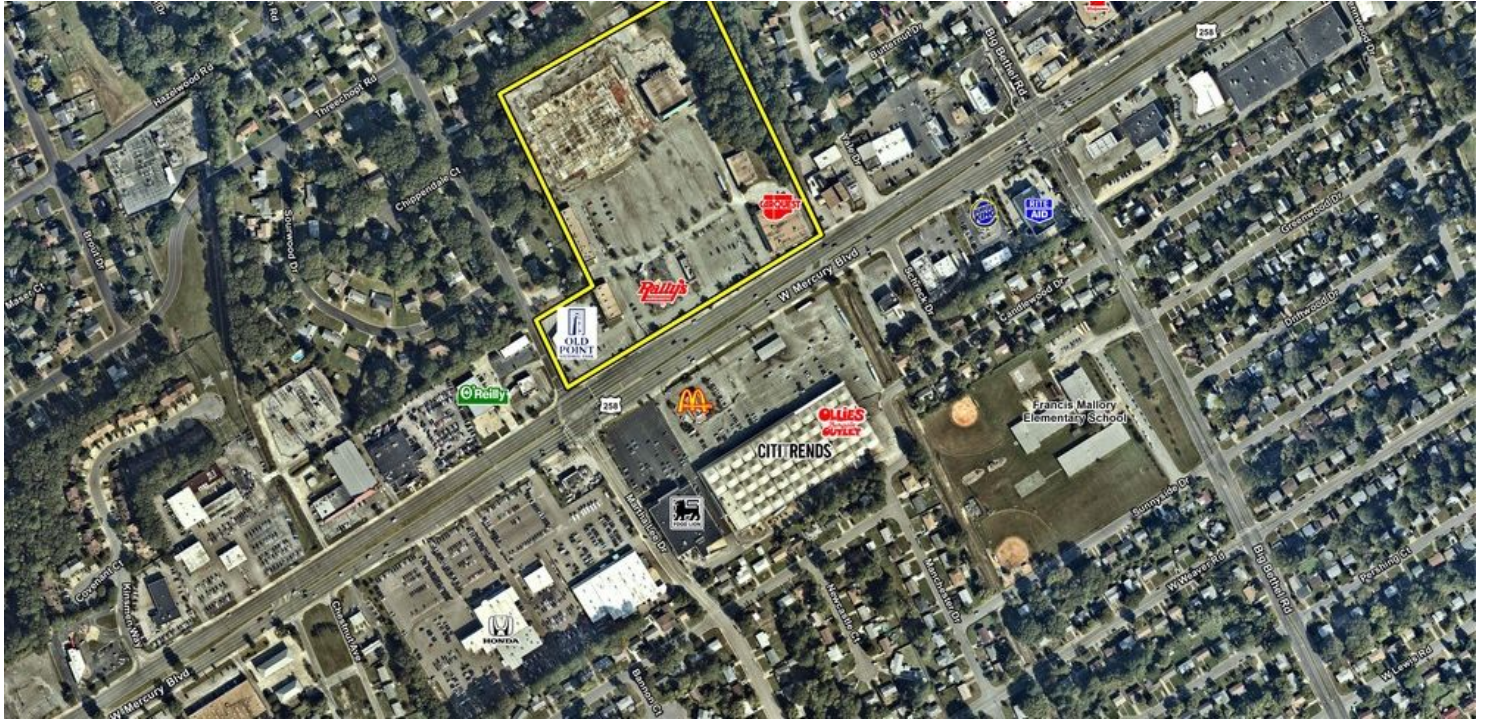


FOREST PARK SQUARE

4004 W. Mercury Blvd, Hampton, VA 23666



PROPERTY HIGHLIGHTS

- Inline space available in community strip center with good visibility and access located just a few miles from Coliseum Central
- Small shops available: +/- 1,200 - 6,000 SF
- Approximately 18,071 SF former Sears available
- Traffic Counts:
Mercury Blvd: 49,000 AADT
Big Bethel Rd: 11,000 AADT

DEMOGRAPHICS

	3 MILES	5 MILES	7 MILES
Population	81,879	181,651	257,966
Households	34,610	72,369	102,274
Average Household Income (\$)	58,216	59,878	67,002

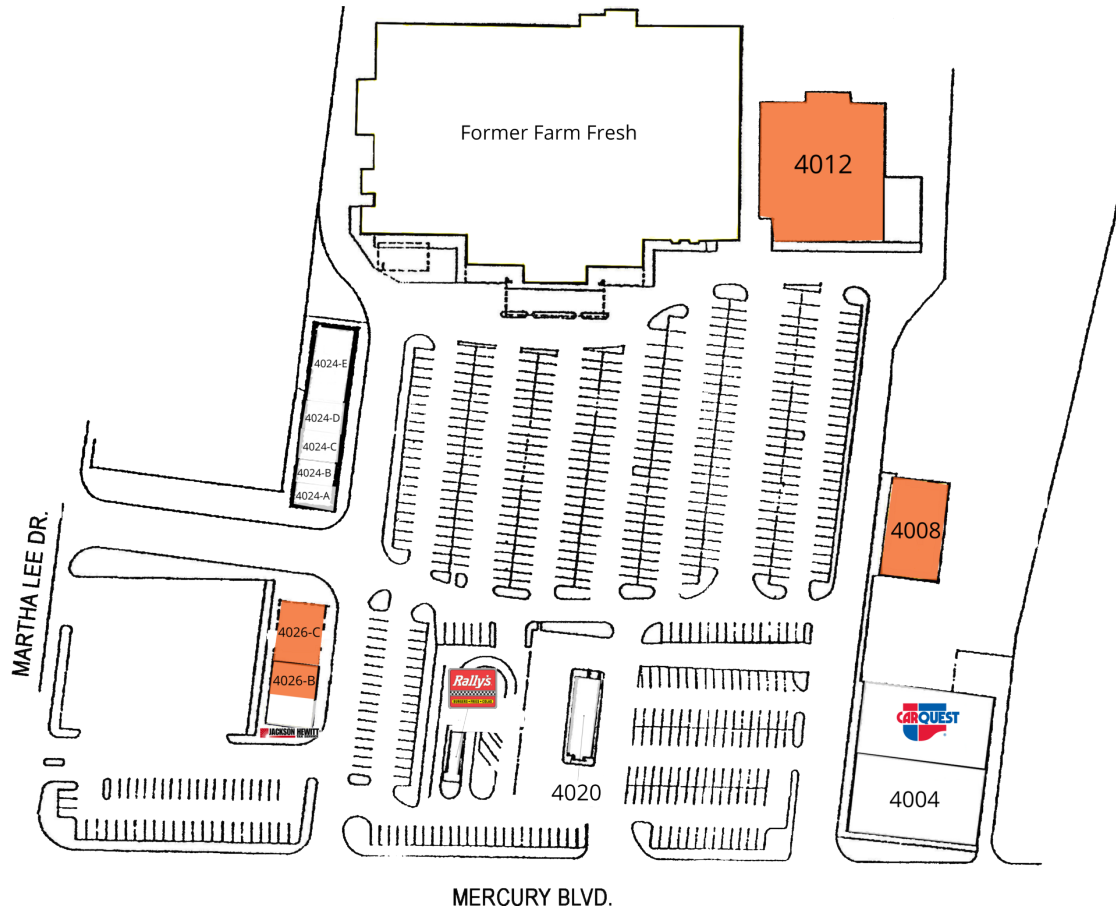
EXCLUSIVE AGENT(S)

WALTER DESKINS • walter.deskins@tscg.com • 757.722.2500



FOREST PARK SQUARE

4004 W. Mercury Blvd, Hampton, VA 23666



MERCURY BLVD.

SUITE	TENANT NAME	SPACE SIZE	SUITE	TENANT NAME	SPACE SIZE
4008	Available	6,000 SF	4022	Rally's	710 SF
4026-B	Available	2,400 SF	4024-A	Zero's Subs	1,200 SF
4012	Available	18,071 SF	4024-B	Moe's Seafood	1,200 SF
4026-C	Available	2,254 SF	4024-C	Nail Luv	1,440 SF
4004	Remarkable Dollar Goods	10,251 SF	4024-D	Kappatal Cuts	1,440 SF
4006	Carquest Auto Parts	8,500 SF	4024-E	TNT Bootcamp	3,840 SF
4020	Beijing Express	1,854 SF	4026-A	Jackson Hewitt Tax Service	1,200 SF

EXCLUSIVE AGENT(S)

WALTER DESKINS • walter.deskins@tscg.com • 757.722.2500

