



VACANT LOT - 1.833 AC | 15,200 SF WAREHOUSE ON 1.342 AC



PROPERTY DESCRIPTION

- \$1,325,000 Sale Price**
- 15,200 SF Warehouse For Sale, of which, each 7,200 SF half is leased; one side for one year and one is in year one of a three-year lease**
- Vacant Lot is 1.833 Acres**
- Lot with Building is 1.342 Acres**
- 3.176 Acres Total, including Lot and Building**
- 30,000+ SF Parking Lot**

OFFERING SUMMARY

Sale Price:	\$1,325,000
Lot Size:	3.176 Acres
Building Size:	15,200 SF

DEMOGRAPHICS	1 MILE	3 MILES	5 MILES
Total Households	3,553	24,482	60,824
Total Population	8,714	58,743	148,673
Average HH Income	\$80,210	\$79,471	\$80,328

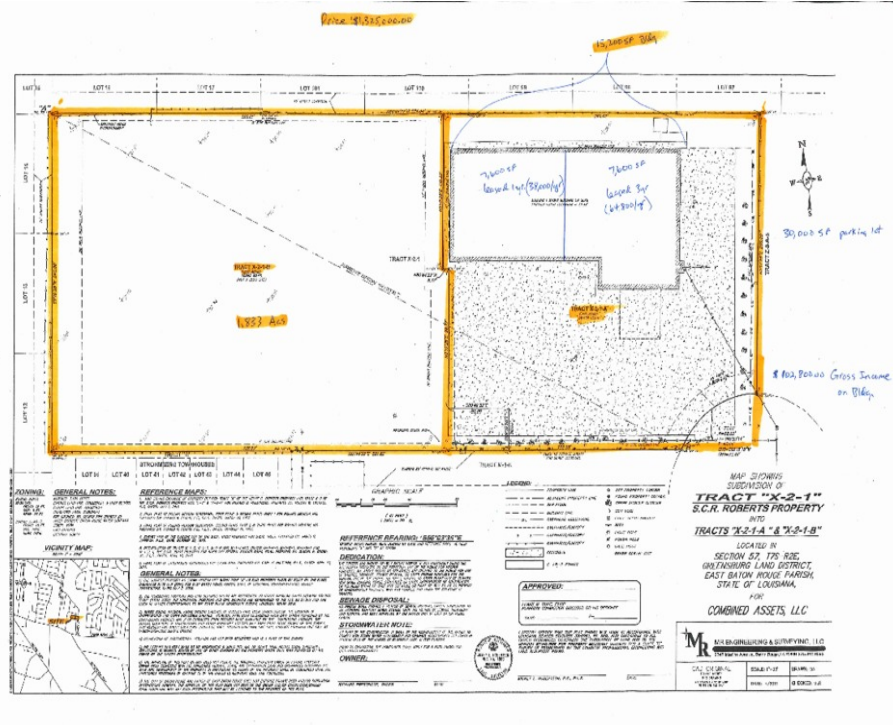
MIKE STINSON, CCIM

225.907.7793
mike@sr-cre.com

SAURAGE ROTENBERG COMMERCIAL REAL ESTATE, LLC

5135 Bluebonnet Boulevard, Baton Rouge, LA 70809
225.766.0000 | sauragerotenberg.com

VACANT LOT - 1.833 AC | 15,200 SF WAREHOUSE ON 1.342 AC



MIKE STINSON, CCIM

225.907.7793

mike@sr-cre.com

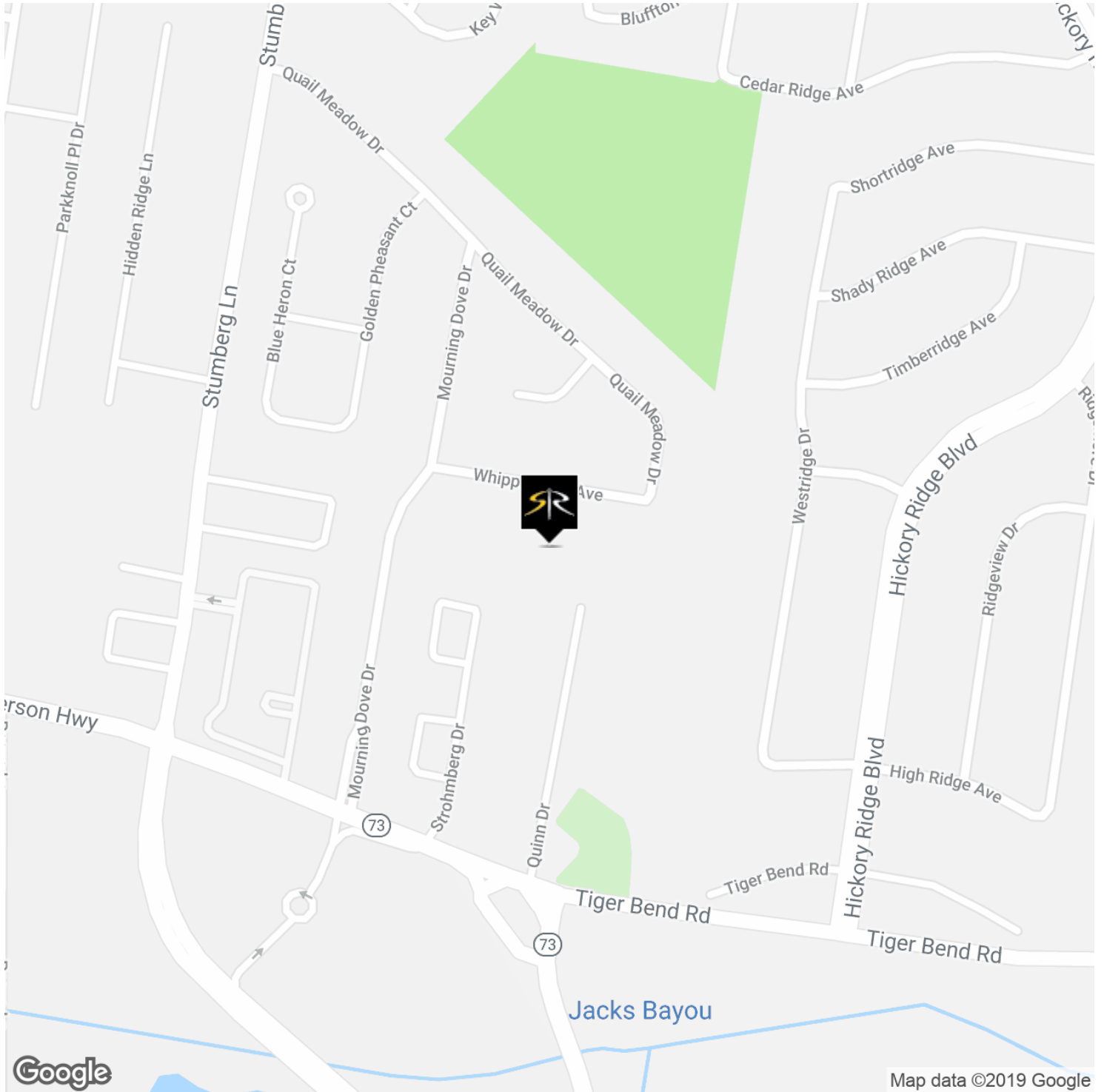
SAURAGE ROTENBERG COMMERCIAL REAL ESTATE, LLC

5135 Bluebonnet Boulevard, Baton Rouge, LA 70809

225.766.0000 | sauragerotenberg.com



VACANT LOT - 1.833 AC | 15,200 SF WAREHOUSE ON 1.342 AC



MIKE STINSON, CCIM

225.907.7793

mike@sr-cre.com

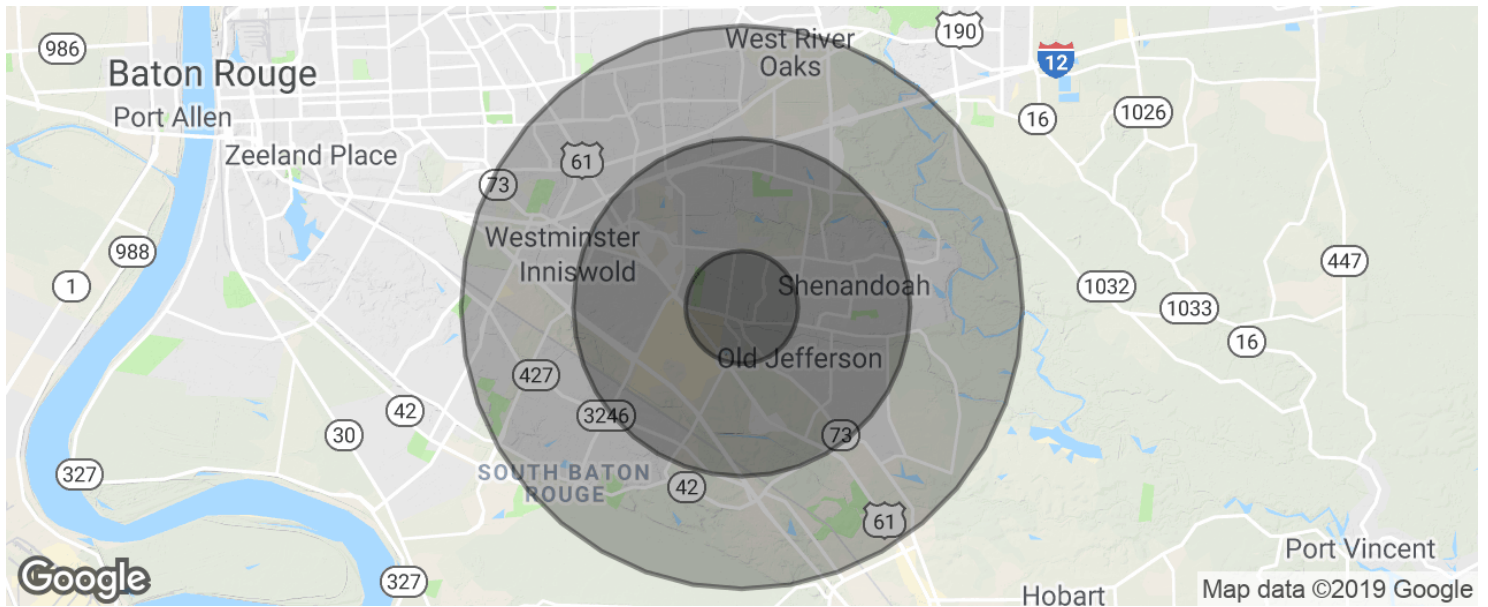
SAURAGE ROTENBERG COMMERCIAL REAL ESTATE, LLC

5135 Bluebonnet Boulevard, Baton Rouge, LA 70809

225.766.0000 | sauragerotenberg.com



VACANT LOT - 1.833 AC | 15,200 SF WAREHOUSE ON 1.342 AC



POPULATION	1 MILE	3 MILES	5 MILES
Total population	8,714	58,743	148,673
Median age	39.2	36.3	36.5
Median age (Male)	39.2	35.1	34.4
Median age (Female)	39.3	37.5	38.3
HOUSEHOLDS & INCOME	1 MILE	3 MILES	5 MILES
Total households	3,553	24,482	60,824
# of persons per HH	2.5	2.4	2.4
Average HH income	\$80,210	\$79,471	\$80,328
Average house value	\$172,918	\$239,523	\$240,546

* Demographic data derived from 2010 US Census

MIKE STINSON, CCIM

225.907.7793
mike@sr-cre.com

SAURAGE ROTENBERG COMMERCIAL REAL ESTATE, LLC

5135 Bluebonnet Boulevard, Baton Rouge, LA 70809
225.766.0000 | sauragerotenberg.com