

558

BREWSTER AVENUE
REDWOOD CITY | CALIFORNIA



±5,580 SF AVAILABLE

First Floor: ±2,847 SF

Second Floor: ±2,733 SF



PRIME DOWNTOWN REDWOOD CITY LOCATION

0.3 miles to Redwood City Caltrain



AVAILABLE immediately

NEW MARKET READY SUITES



Open floorplan

Brand new interior renovations complete in 2019

All glass conference rooms

Timber truss ceilings on second floor



STAND ALONE building identity



16 on site designated **PARKING SPACES**



558
BREWSTER AVENUE

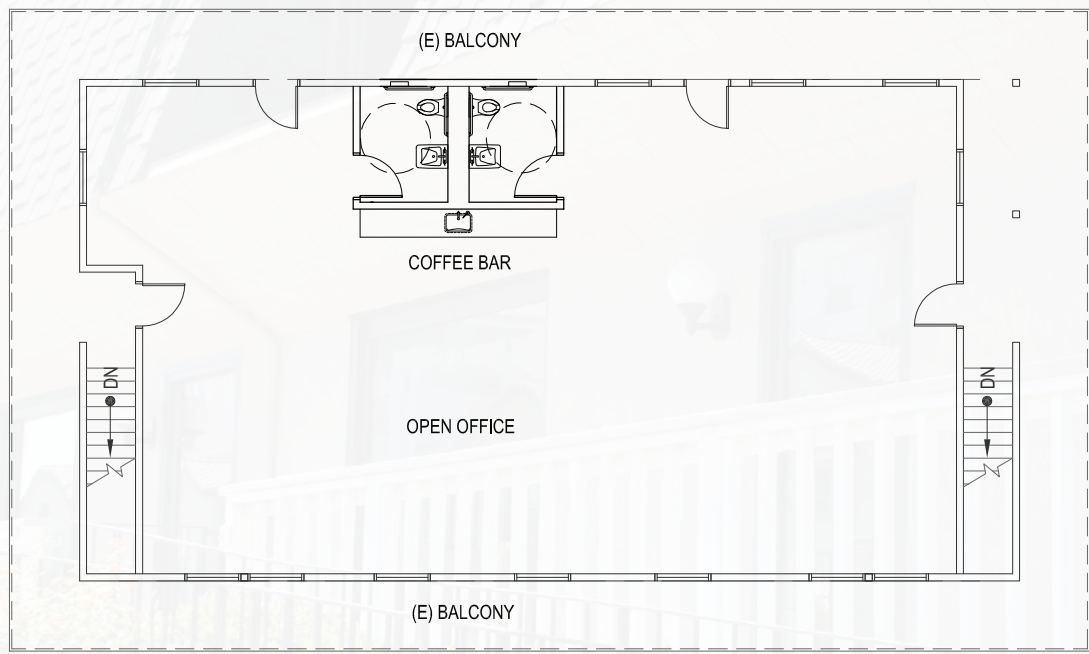


- ### AMENITIES
- RESTAURANTS**
 - 1 GO FISH POKE BAR
 - 2 STARBUCKS RESERVE
 - 3 CYCLISMO CAFE
 - 4 PHILZ COFFEE
 - 5 CRU WINE BAR
 - 6 COFFEE BAR
 - 7 COURTHOUSE 2021
 - 8 VESTA
 - 9 VINO SANTO BISTRO
 - 10 LV MAR
 - 11 THE BLACKSMITH
 - 12 REVERE COFFEE & TEA
 - 13 YOKOSHAMA JAPANESE BISTRO
 - 14 SAKURA TEPPANYAKI & SUSHI
 - 15 QUINTO SOL
 - 16 BLUEFIN SUSHI
 - 17 BLISS COFFEE
 - 18 THE SANDWICH SPOT
 - 19 ORENCHI RAMEN
 - 20
 - 21
 - 22
 - 23
 - 24
 - 25
 - 26
 - 27
 - 28
 - 29
 - 30
 - 31
 - 32
 - 33
 - 34
 - 35
 - 36
 - 37
 - 38
 - 39
 - 40
 - 41
 - 42
 - 43
 - 44
 - 45
 - BANKS & FINANCIAL**
 - 39 WELLS FARGO BANK
 - 40 CHASE BANK
 - 41 BANK OF AMERICA
 - 42 CITIBANK
 - ARTS & CULTURE**
 - 43 FOX THEATER
 - 44 CENTURY 20 THEATER
 - SPORTS & LEISURE**
 - 45 POWERHOUSE GYM



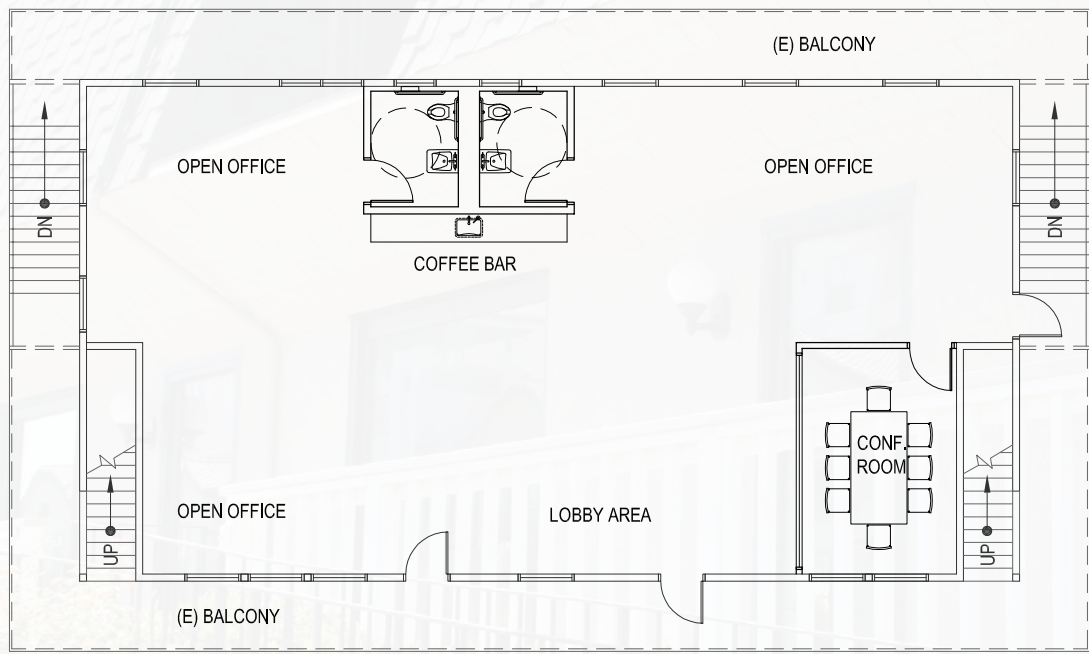
FLOORPLAN

First Floor: ±2,847 SF



FLOORPLAN

Second Floor: ±2,733 SF





558

BREWSTER AVENUE
REDWOOD CITY | CALIFORNIA

MIKE COURSON

650.688.8527

mcourson@ngkf.com

CA RE License# 01358961

AUSTIN O'SUCH

650.688.8503

austin.osuch@ngkf.com

CA RE License# 02064631



245 Lytton Avenue, Suite 150, Palo Alto, CA 94301

The distributor of this communication is performing acts for which a real estate license is required. The information contained herein has been obtained from sources deemed reliable but has not been verified and no guarantee, warranty or representation, either express or implied, is made with respect to such information. Terms of sale or lease and availability are subject to change or withdrawal without notice. 19-1120.09/19