



FOR LEASE

369 Blodgett Street
Cotati, California

INDUSTRIAL/OFFICE

23,000 SQUARE FEET REMAINING



For more information, contact:

Steven Leonard

Managing Director

+1 415 451 2434

steven.leonard@cushwake.com

LIC #0909604

Brian Foster

Managing Director

+1 415 451 2437

brian.foster@cushwake.com

LIC #01393059



Landlord will build out
office space for Credit Tenant

23,000 SF | Leasing Price: \$1.30 NNN (SHELL)
Property Highlights

- Landlord will build out office space for Credit Tenant
- Business Park
- Metal and steel construction
- Front of building
- 1000 AMP Electrical Service 480 / 3 Phase
- 16' to 25' clear height, good potential office glass line
- Great location near Lowe's and Graton Casino in a well established business park
- Easy freeway access to Highway 101 via Highway 116 (Gravenstein Highway)
- Cannabis approved, pricing upon request.

WAREHOUSE SPACE

For more information, contact:

Steven Leonard

Managing Director

+1 415 451 2434

steven.leonard@cushwake.com

LIC #0909604

Brian Foster

Managing Director

+1 415 451 2437

brian.foster@cushwake.com

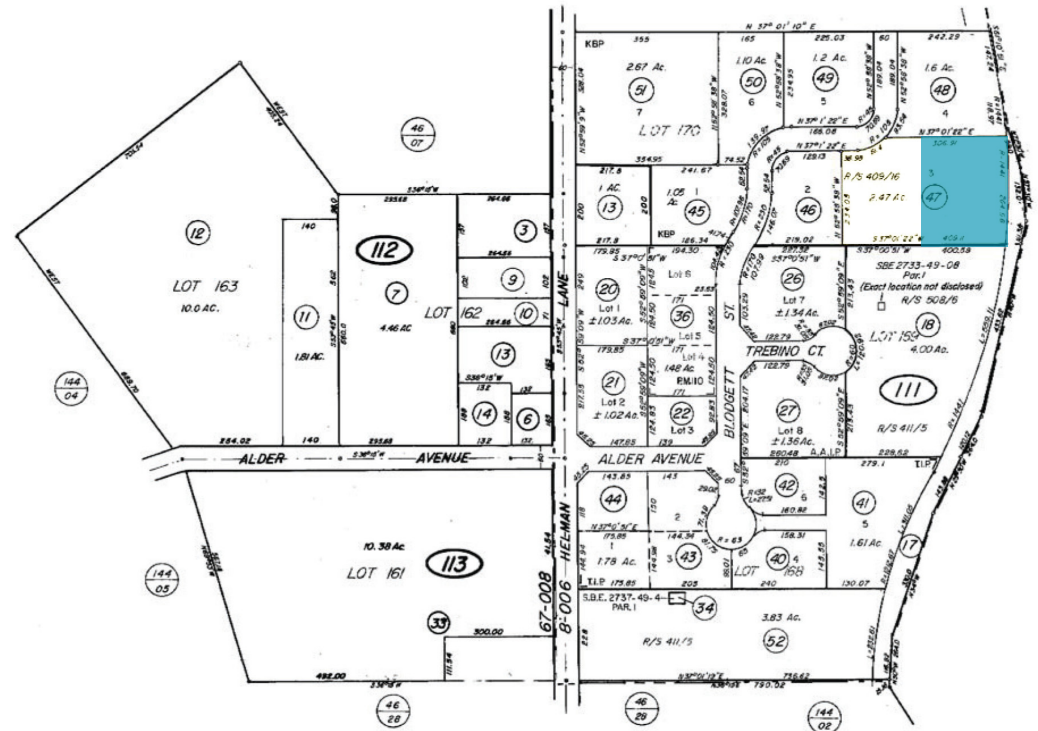
LIC #01393059

23,000 sf building

Leasing Price: \$1.30 PSF NNN (Shell)

WAREHOUSE SPACE

Property Address	369 Blodgett Street, Cotati, CA 94931
Leasing Price	\$1.30 PSF NNN
Property Type	Industrial
Zoning	CI- Commercial/Industrial
Available	±23,000 SF
Parcel Number	046-111-047
Parcel Size	±2.5 Acres



±23,000 SF metal industrial building available, similar to buildings in the surrounding business park, The property is located in the Kandy Business Park near Highway 101. The park is almost fully built out with a variety of light industrial uses due. Potential office buildout available.

Steven Leonard
 Managing Director
 +1 415 451 2434
 steven.leonard@cushwake.com
 LIC #0909604

Brian Foster
 Managing Director
 +1 415 451 2437
 brian.foster@cushwake.com
 LIC #01393059

900 Larkspur Landing Circle,
 Suite 295 Larkspur, CA 94939
 ph: +1 415 485 0500
 fx: +1 415 485 1341
cushmanwakefield.com



FOR LEASE

369 Blodgett Street

Cotati, California

23,000 SF Building
Floor Plan | Site Plan

WAREHOUSE SPACE



For more information, contact:

Steven Leonard

Managing Director

+1 415 451 2434

steven.leonard@cushwake.com

LIC #0909604

Brian Foster

Managing Director

+1 415 451 2437

brian.foster@cushwake.com

LIC #01393059

900 Larkspur Landing Circle,

Suite 295 Larkspur, CA 94939

ph: +1 415 485 0500

fx: +1 415 485 1341

cushmanwakefield.com



CUSHMAN &
WAKEFIELD

FOR LEASE

369 Blodgett Street

Cotati, California

