



# 372 BLEECKER STREET

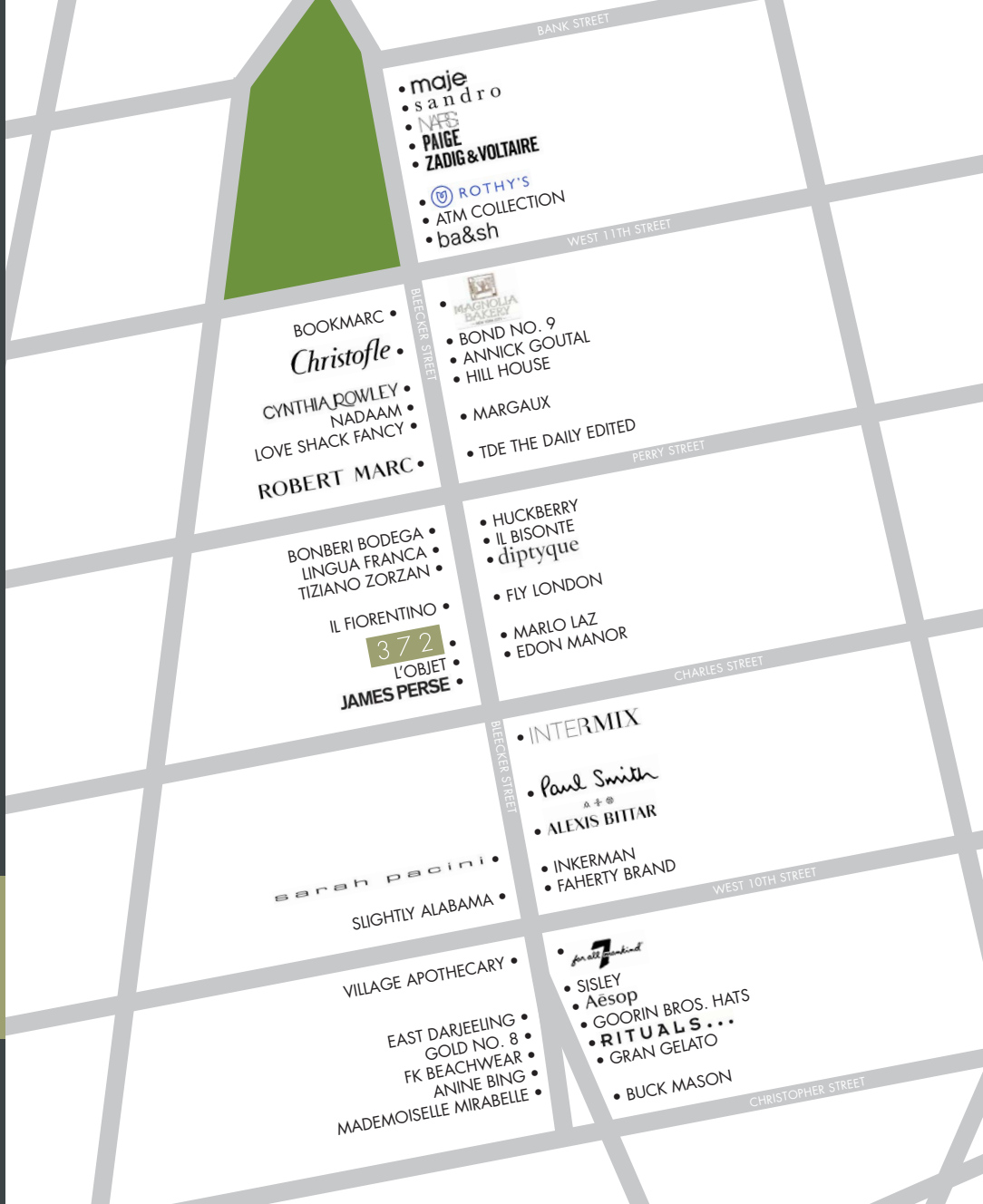
BETWEEN CHARLES & PERRY STREETS



## DETAILS:

Ground..... **1,300 SF**  
Lower..... **900 SF**  
Frontage..... **26'**  
(North: 11', South: 15')  
Term..... **Negotiable**  
Possession.. **2/1/2020**  
Asking.. **Please Inquire**

**SINVIN**  
COMMERCIAL REAL ESTATE & ADVISORY



## NOTES :

- U-shaped store with two Bleeker-fronting storefronts and entrances
- Space can be divided

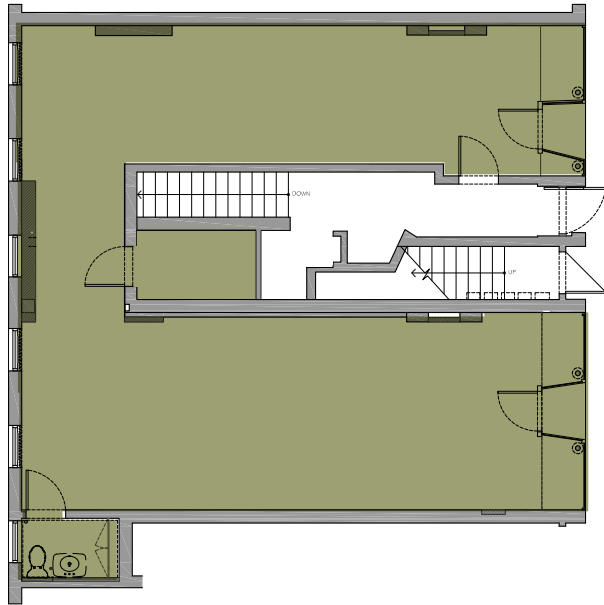
## NEIGHBORS :

- James Perse
- Huckberry
- Il Bisonte
- Robert Marc
- Naadam
- Paul Smith
- Alexis Bittar
- Edon Manor
- Rothy's
- Annick Goutal
- Magnolia Bakery

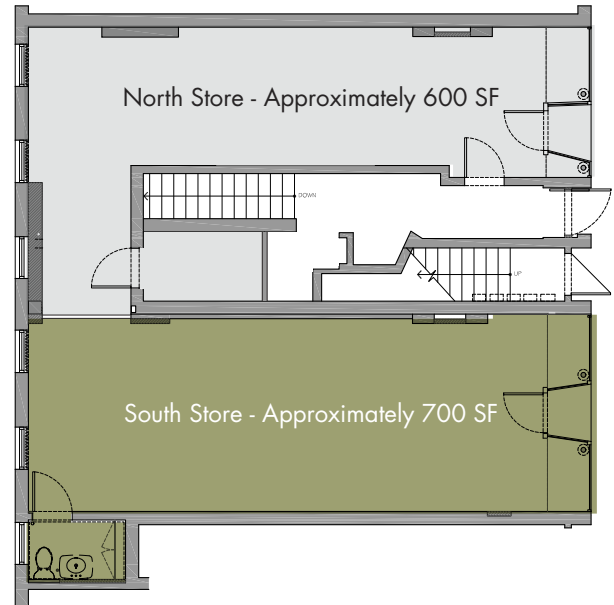




Ground Level | Entire Space



Ground Level | Proposed Divisions



# 372 BLEECKER STREET

BETWEEN CHARLES & PERRY STREETS

PLEASE CONTACT:

**Christopher Owles**

212.604.9002 | [chris@sinvin.com](mailto:chris@sinvin.com)

**Sarah Shannon**

646.673.8780 | [sarah@sinvin.com](mailto:sarah@sinvin.com)

**SINVIN**  
COMMERCIAL REAL ESTATE & ADVISORY