

Brokerage

Management

Investment



## Commercial

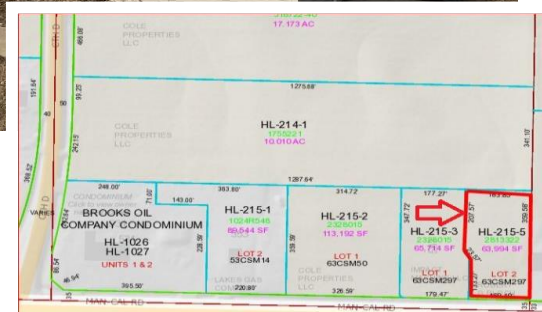
**Sale Price** \$109,900

**PRICE REDUCTION** \$95,000

**Square Footage** +/- 1,500

**Acreage** +/- 1.5

**Real Estate Taxes** To Be Determined



### Property Features

- Newer 1,500 SF building
- Full attic with floor
- Electricity is at road
- Propane tank for heat
- 8' x 8' overhead door

### Location

- From Appleton head east on Calumet St. (Co. KK) which turns into Man Cal Road. One block east of County Road D. Was part of and is adjacent to 587 Man Cal



For more information, please contact  
**Scott Muggenthaler**  
(920) 585-9699  
smuggenthaler@jrossassoc.com

J. Ross & Associates, LLC  
2631 N. Meade St, Suite 102 | Appleton, WI 54911  
926 Willard Dr., Suite 114 | Green Bay, WI 54304  
Phone: (920) 428-8884  
[www.jrossassoc.com](http://www.jrossassoc.com)