

E/NEC 379TH AVE AND INDIAN SCHOOL ROAD

EXCLUSIVE LISTING | TONOPAH, ARIZONA

LOCATION

Property is located approximately 3/4 of a mile northeast of Interstate 10 and 379th Ave along Indian School Road.

PRICE \$885,000

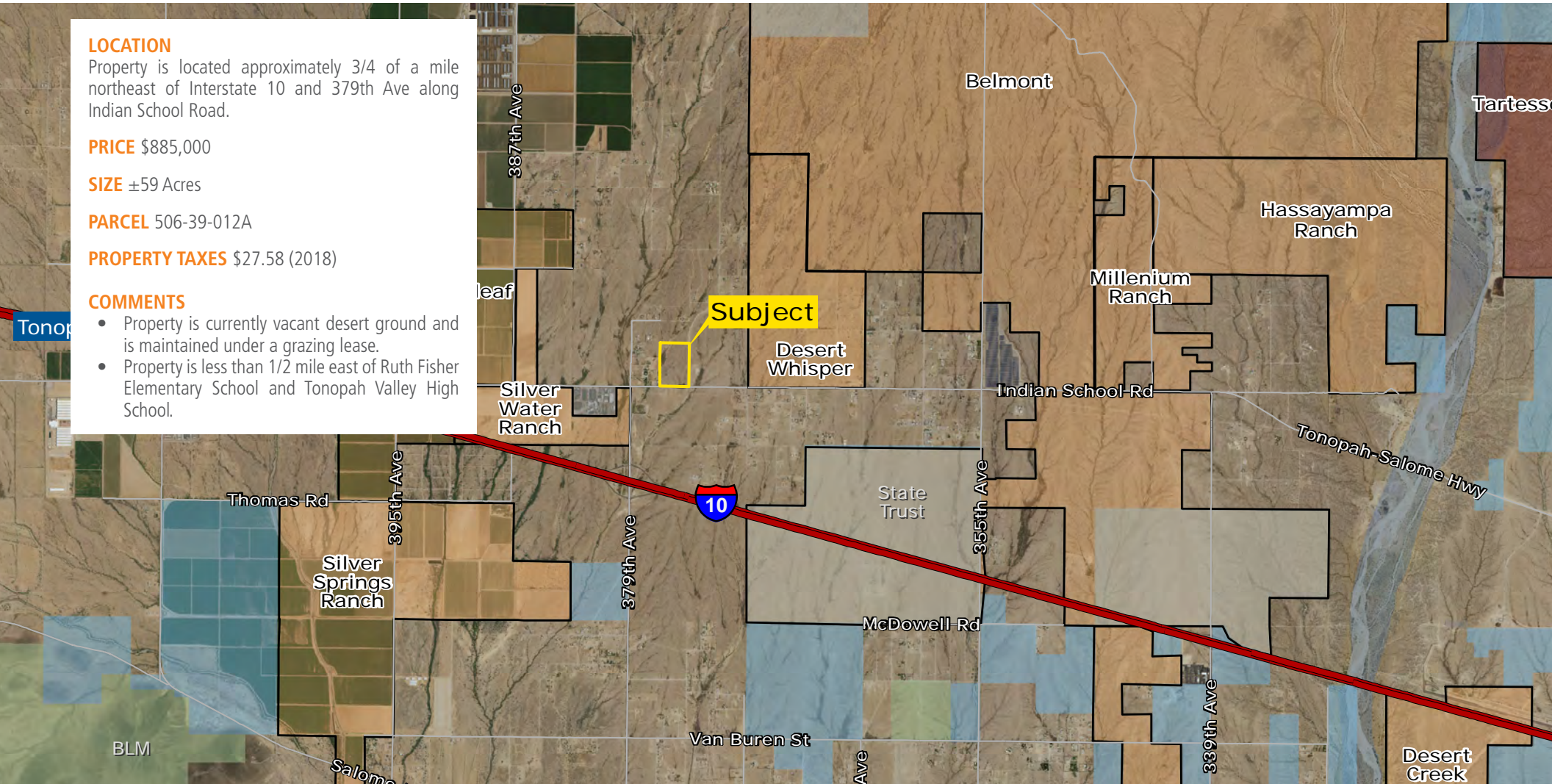
SIZE ±59 Acres

PARCEL 506-39-012A

PROPERTY TAXES \$27.58 (2018)

COMMENTS

- Property is currently vacant desert ground and is maintained under a grazing lease.
- Property is less than 1/2 mile east of Ruth Fisher Elementary School and Tonopah Valley High School.

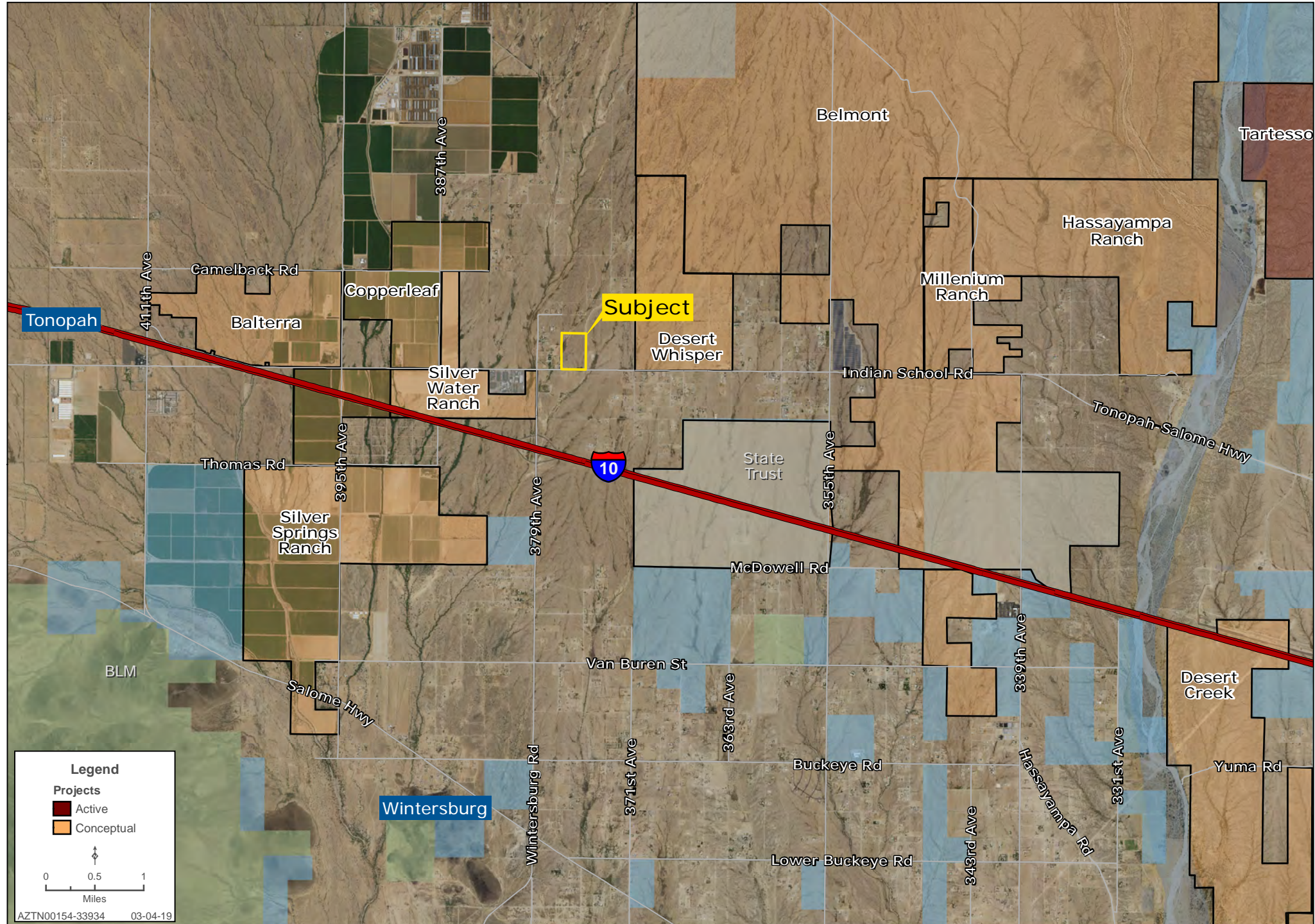


Greg Vogel | gvogel@landadvisors.com Wes Campbell | wcampbell@landadvisors.com
4900 North Scottsdale Road, Suite 3000, Scottsdale, Arizona 85251 ph. 480.483.8100 | www.landadvisors.com

The information contained herein is from sources deemed reliable. We have no reason to doubt its accuracy but do not guarantee it. It is the responsibility of the person reviewing this information to independently verify it. This package is subject to change, prior sale or complete withdrawal. AZTN00154 - 4.29.19

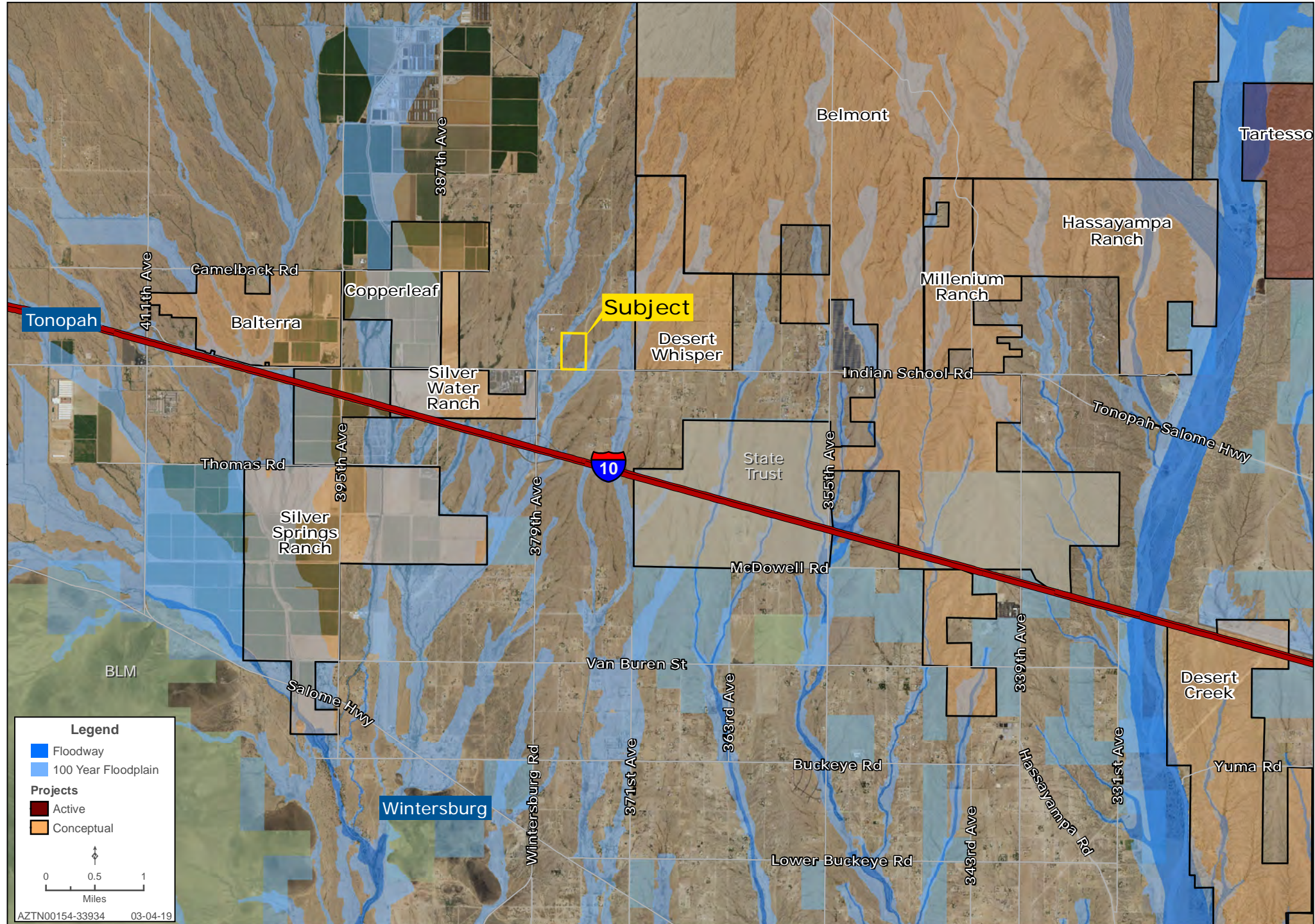
379TH AND INDIAN SCHOOL SURROUNDING AREA MAP

Greg Vogel | Wes Campbell | 480.483.8100 | www.landadvisors.com



379TH AND INDIAN SCHOOL SURROUNDING AREA MAP

Greg Vogel | Wes Campbell | 480.483.8100 | www.landadvisors.com



379TH AND INDIAN SCHOOL PROPERTY DETAIL MAP

Greg Vogel | Wes Campbell | 480.483.8100 | www.landadvisors.com

