



# RETAIL PROPERTY FOR LEASE

163 N Brindlee Mountain  
Pky. Arab, AL 35016

PRESENTED BY:

**LOUISE JENNINGS**

404.606.3285

[louise@resellc.com](mailto:louise@resellc.com)



REAL ESTATE  SOUTHEAST<sub>LLC</sub>

**REAL ESTATE SOUTHEAST**

404.606.3285

P. O. Box 681955

Prattville, AL 36068

# Executive Summary

TOWN PLAZA | 163 N BRINDLEE MOUNTAIN PKY. ARAB, AL, ARAB, AL 35016

REAL ESTATE  SOUTHEAST<sup>LLC</sup>



## OFFERING SUMMARY

Available SF: 1,050 - 14,360 SF

Lease Rate: Negotiable

Lot Size: 4.0 Acres

Building Size: 78,113

Zoning: C

Market: Huntsville

## PROPERTY OVERVIEW

Well established community center located at the intersection of Hwy. 69 and Hwy. 231. Easy access off Hwy. 231. Anchored by Foodland, Goodwill and Factory Connection.

## PROPERTY HIGHLIGHTS

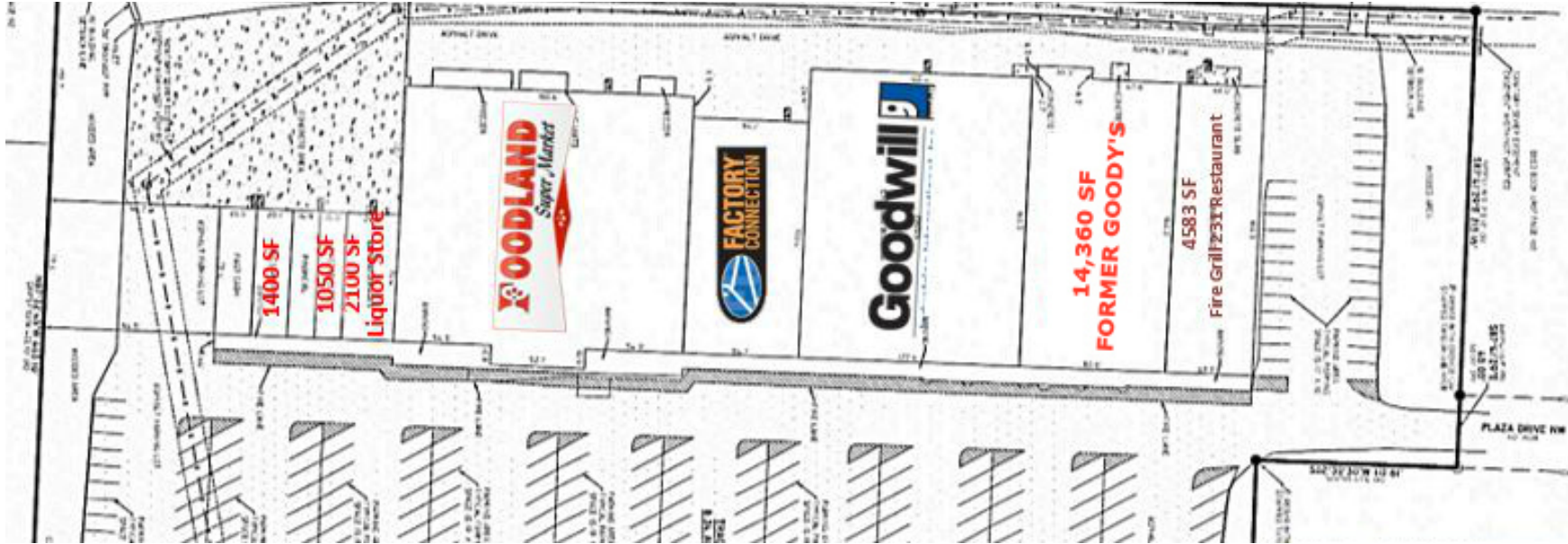
- Highly visible community center
- Great access off busy Hwy 231
- Anchored by Foodland, Goodwill, Factory Connection
- 35 miles S of Huntsville AL and 25 miles NE of Cullman
- 4583 SF end cap restaurant space available 6/1/2020



# Available Spaces

TOWN PLAZA | 163 N BRINDLEE MOUNTAIN PKY. ARAB, AL, ARAB, AL 35016

REAL ESTATE  SOUTHEAST<sub>LLC</sub>



SUITE	TENANT	SIZE (SF)	LEASE TYPE	LEASE RATE	
Unit 2	Available	1,400 SF	NNN	Negotiable	
Unit 4	Available	1,050 - 3,150 SF	NNN	Negotiable	
Unit 5	Available	2,100 SF	NNN	Negotiable	
Unit 10	Available	4,583 SF	NNN	Negotiable	
Unit 9	Available	14,360 SF	NNN	Negotiable	

## Advisor Bio 1

TOWN PLAZA | 163 N BRINDLEE MOUNTAIN PKY. ARAB, AL, ARAB, AL 35016

REAL ESTATE  SOUTHEAST<sub>LLC</sub>



### LOUISE JENNINGS

[louise@resellc.com](mailto:louise@resellc.com)

**Direct:** 404.606.3285 | **Cell:** 404.606.3285

AL #030350 // GA #166727 MS #21674

### PROFESSIONAL BACKGROUND

Real Estate Southeast was founded in 2001 by Louise Jennings. As principal and an investor, Ms. Jennings is highly driven to provide positive results in the most efficient manner possible and understands the important responsibilities of creating value in retail properties, along with its day to day management and operations. With over 27 years of experience in the commercial real estate business, she also understands the importance of providing good service and delivering results. Ms. Jennings has redeveloped almost a million SF of retail space throughout the Southeast. This valuable experience is shared with the dedicated team at Real Estate Southeast. This team works diligently to keep tenants happy and properties running smoothly and profitably. Real Estate Southeast works closely with retailers, lenders, investors and industry professionals, earning a strong reputation for hands on service, delivering results. With extensive knowledge of the southeast markets, Real Estate Southeast is contracted to do market analysis and site selection. They have worked with clients such as; ABC, DaVita, Dunkin Donuts, Honey Baked Ham and LifeChoice.

Louise Jennings and Real Estate Southeast are active in the community. Louise Jennings is a member of the Alabama Center for Real Estate Leadership Council (ACRE), International Council of Shopping Centers (ICSC), Prattville Millbrook Sunrise Rotary Club and First United Methodist Church. Jennings also serves on the following boards; Central Alabama Community Foundation, YMCA, Prattville Creative and Performing Arts Council, Autauga County Heritage Association (Past President). She is also a past director and supporter of Autauga County Family Support Center and is a great lover of animals.

### MEMBERSHIPS

ICSC  
ACRE  
IREM