

1 EAST 33RD STREET, New York, NY 10016



156,324.00 SF

1 block from the Empire State Building  
with approximately 15 feet of frontage on East 33rd St  
new lobby and 24 hour access

One block from the the B,D,F,M,N,Q,R and PATH trains  
Built: 1913 Architect: Maynicke & Franke

Tenants

HIGHLAND ASSOCIATES LTD.

For more information call

1- 212- 249- 1550

KOEPEL ROSEN

40 East 69th Street

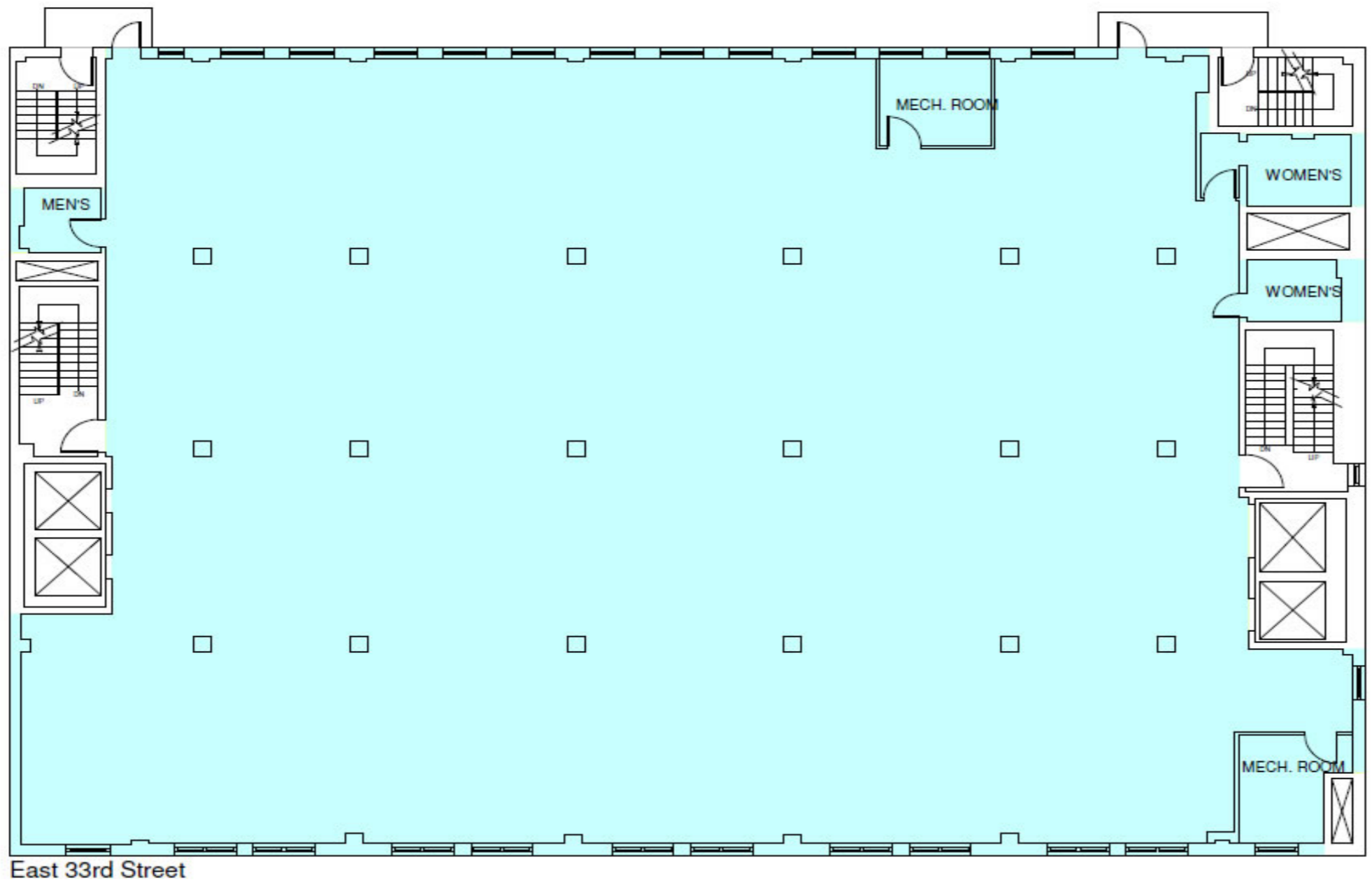
New York, NY 10021

[dkoepfel@koepfelrosen.com](mailto:dkoepfel@koepfelrosen.com)

1 EAST 33RD STREET, New York, NY 10016

**1 East 33rd Street**

**Typical Floor Plan**



Note: All dimensions and conditions are approximate and for information only

**K R** Koepfel Rosen LLC  
 40 East 69th Street  
 New York, NY 10021  
 212-249-1550  
 www.koepfelrosen.com

Scale: NTS  
 Date: February .1, 2016



For more information call  
 1- 212- 249- 1550  
 KOEPEL ROSEN  
 40 East 69th Street  
 New York, NY 10021  
 dkoepfel@koepfelrosen.com