

REGENCY PLAZA

NEC Quentin Rd & Euclid Ave / Palatine, IL



MID-AMERICA[®]
Asset Management, Inc.



RETAIL OPPORTUNITY

REGENCY PLAZA



Address

NEC Quentin Road
& Euclid Avenue
Palatine, IL

Features

- Located approximately ½ mile west of Route 53 and ½ mile east of Harper College with Fremd High School located immediately north of the project
- Algonquin Road office corridor strengthens daytime population along with the dense residential base surrounding the property
- 609 parking spaces

Availability

- 33,893 SF Former Dominick's position
- 10,540 SF (divisible) existing fully fixtured free standing restaurant
- 800–9,632 SF Inline space

Demographics

	1 Mile	3 Miles	5 Miles
POPULATION	11,234	78,302	240,703
HOUSEHOLDS	4,351	32,034	94,790
AVG HOUSEHOLD INCOME	\$159,336	\$124,899	\$122,246
DAYTIME POPULATION	11,456	92,706	274,652

Co-Tenants

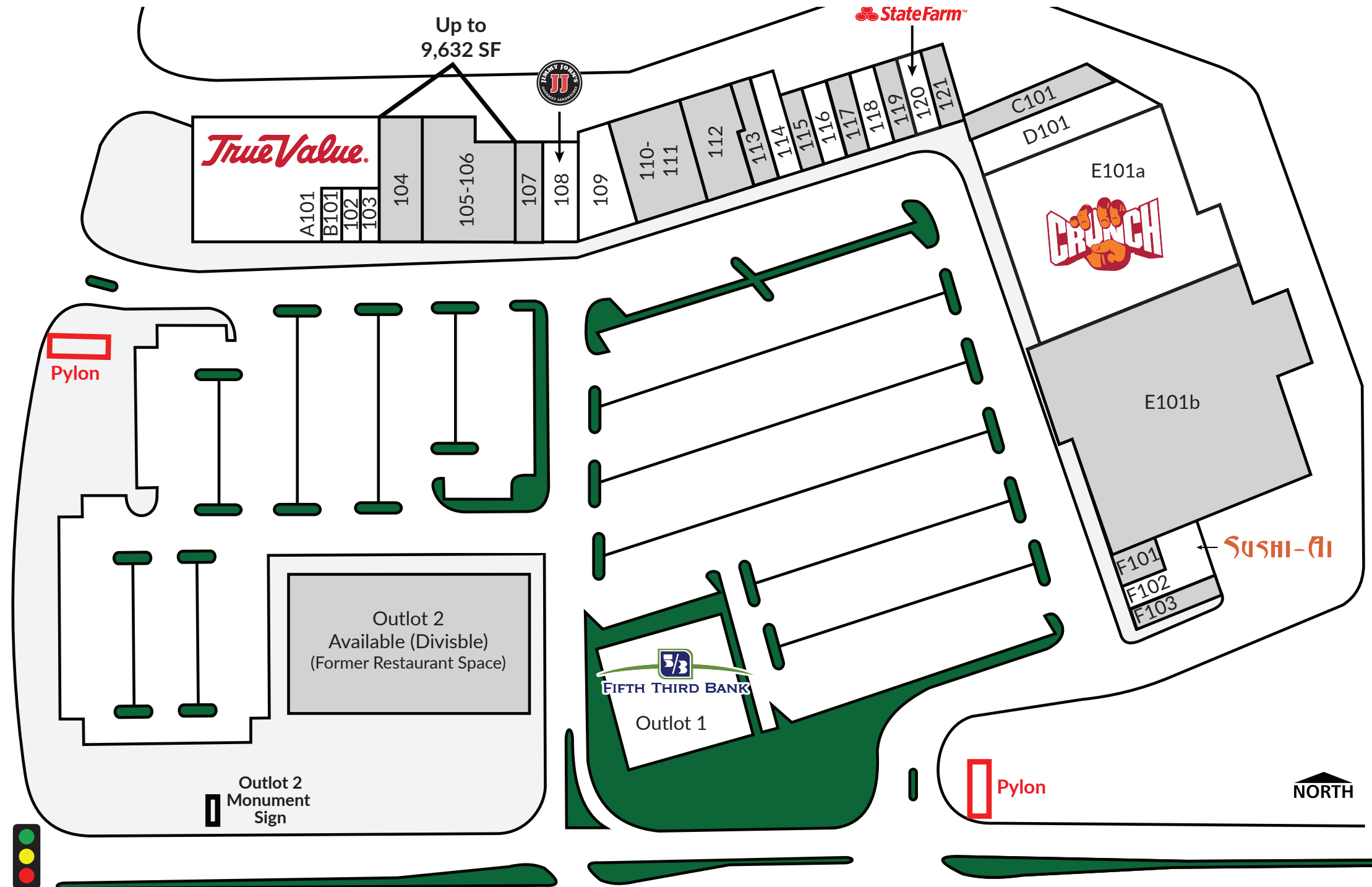


True Value.

FC hair cuttery



REGENCY PLAZA



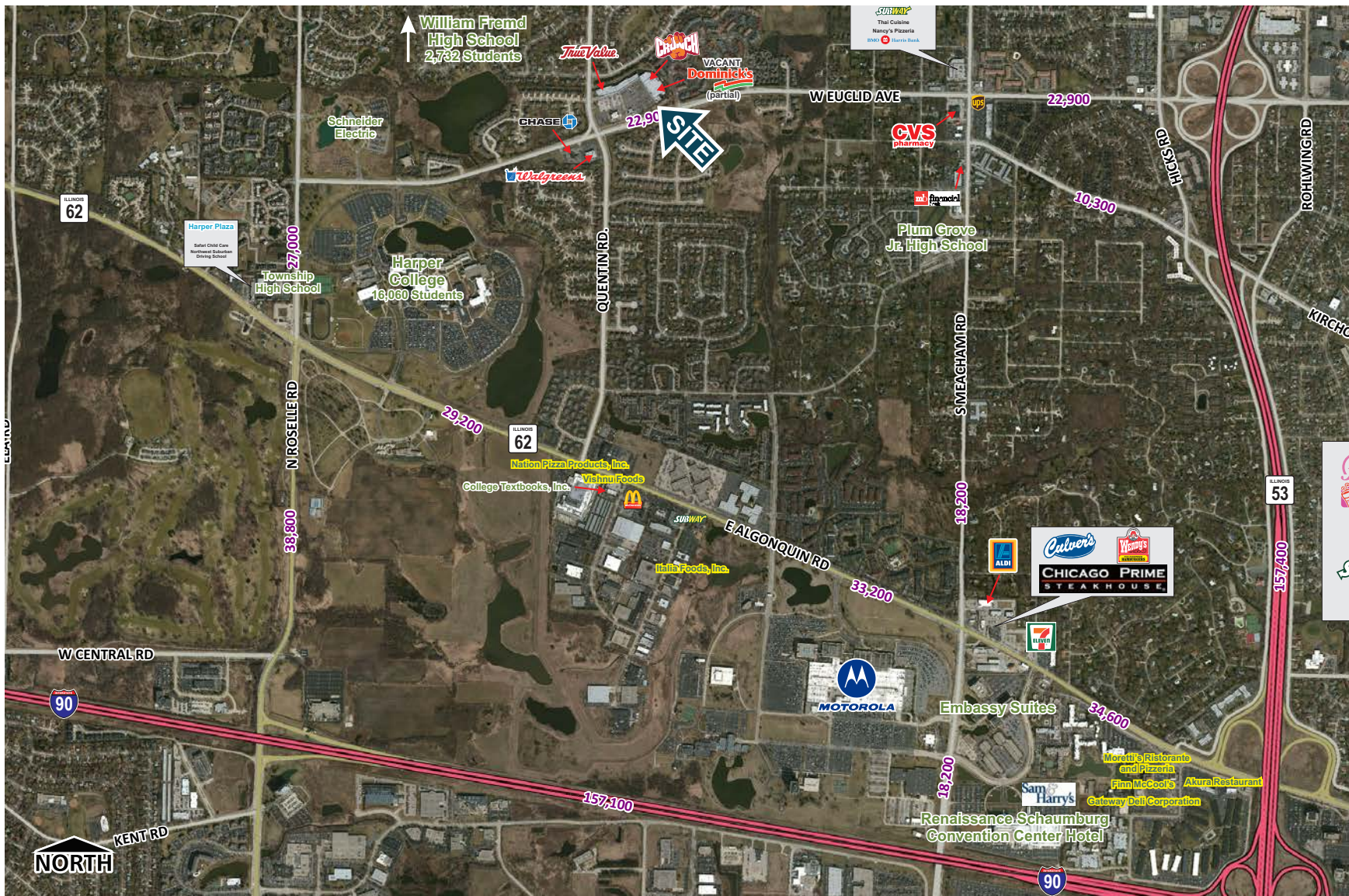
Address	Suite	Tenant	SF
790	A101	True Value Hardware	13,500
788	B101	Regency Shoe Repair	675
786	102	Certified Driving School	675
784	103	The Nail Spa	817
782	104	Available	2,550
778-780	105-106	Available	7,082
776	107	Available	2,000

Address	Suite	Tenant	SF
774	108	Jimmy John's Subs	2,000
772	109	Elite Salon & Spa	3,168
768	110-111	Available	4,800
766	112	Available	2,800
764	113	Available	2,000
762	114	Image Optics	1,600
760	115	Available	1,200

Address	Suite	Tenant	SF
758	116	Brother's Ribs	1,200
756	117	Available	1,200
754	118	Chappie's Cafe	1,200
752	119	Available	1,170
750	120	State Farm	1,230
748	121	Available	1,145
732	C101	Available	4,056

Address	Suite	Tenant	SF
724	D101	W Kim Tae Kwon Do	6,422
720	E101a	Crunch Fitness	22,000
720	E101b	Available (Divisible)	33,893
716	F101	Available	800
710	F102	Sushi Ai	2,515
706	F103	Available	1,125
700	Outlot #1	Fifth Third Bank	5,000
702-704	Outlot #2	Available	10,540
Total GLA			138,363

REGENCY PLAZA



REGENCY PLAZA

Liz
Krebs

T: 630.954.7362

F: 630.954.7304

LKrebs@MidAmericaGrp.com

Sarah
Norlander

T: 630.954.7290

F: 630.954.7304

SNorlander@MidAmericaGrp.com



One Parkview Plaza, 9th Floor
Oakbrook Terrace, Illinois 60181
630.954.7300

MidAmericaGrp.com



CONTACT