

Church Building For Sale

22230 Meyler St
Torrance, CA

±21,814 SF Building

Lot Size: 1.54 acres

Zoning: C-3 (LA County)

Year Built: 1978

Parking: 107 spaces

Sanctuary Seats: 500

Large sanctuary, offices,
classrooms, kitchen, fellowship
hall, and outside play area

Please do not disturb the church

Sale Price: \$4,950,000



Location



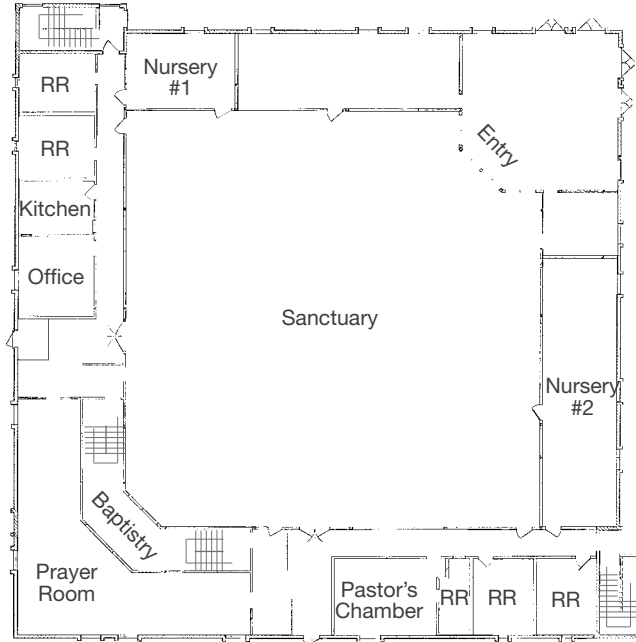
Contact

Eric Knowles
858.369.3017
eknowles@kiddermathews.com
LIC # 00944210

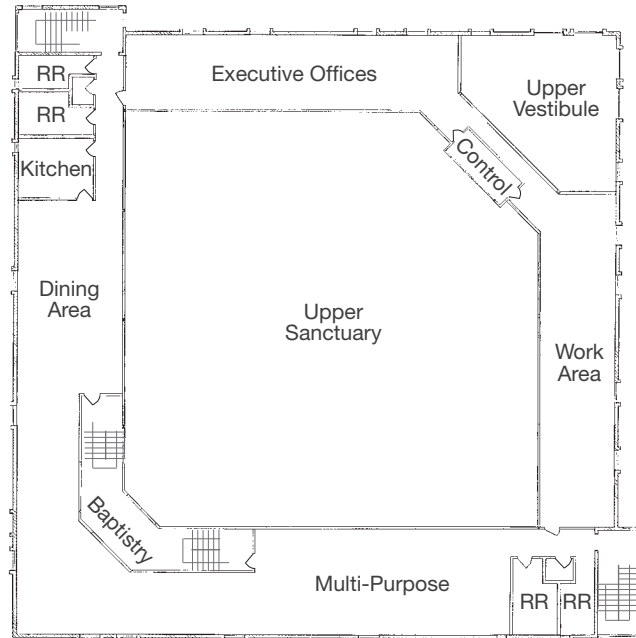
Robert Fletcher
858.369.3034
rfletcher@kiddermathews.com
LIC # 01706060

Floor Plans

1st Floor



2nd Floor



Contact

Eric Knowles
 858.369.3017
 eknowles@kiddermathews.com
 LIC #00944210

Robert Fletcher
 858.369.3034
 rfletcher@kiddermathews.com
 LIC #01706060

22230 Meyler St



Contact

Eric Knowles
858.369.3017
eknowles@kiddermathews.com
LIC #00944210

Robert Fletcher
858.369.3034
rfletcher@kiddermathews.com
LIC #01706060