



KLOCKER WAREHOUSE

Tea, South Dakota

Building For Sale | Hagedorn Industrial Park



46963 Monty Street
Tea, SD 57064



size

Building: 12,225 sqft
Land: 1.01 acre



price

\$699,000



location

Property is located in Hagedorn Industrial Park in Tea, South Dakota, with close proximity to Interstate 29. Site is located on the southside of Sioux Falls, SD.



layout

Building includes 4 separate bays, each with an overhead door.



details:

- Year Built: 2003
- Building dimensions: 165' x 70'
- Sidewall height: 16'
- 4 doors: 14' tall x 18' wide
- Cold storage building, with ability to be insulated/heated
- Potential for building addition if a buyer needs additional space.
- Gravel lot

Information deemed reliable but not guaranteed.

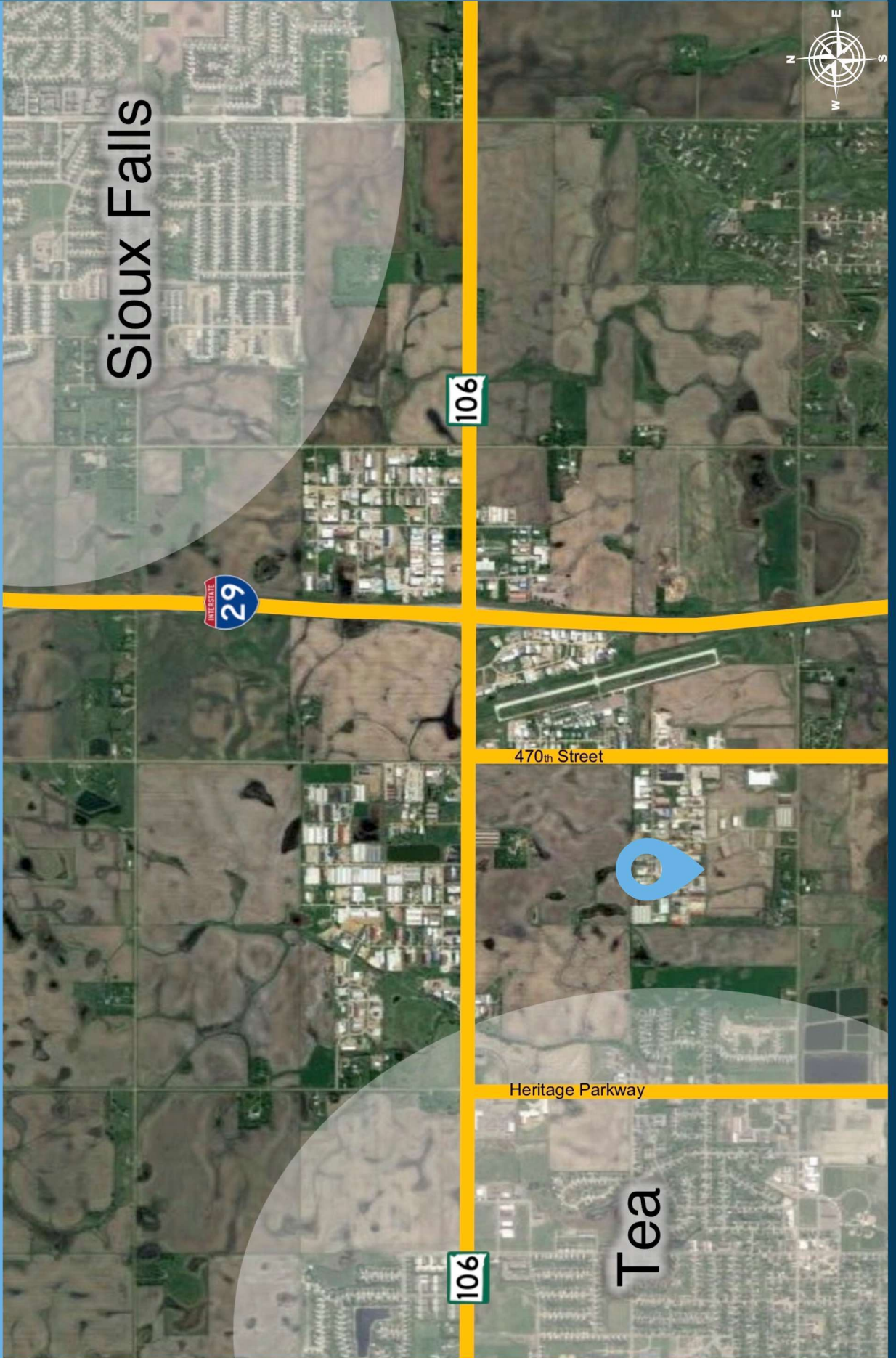


Lake Lorraine | 2571 S. Westlake Drive #100
Sioux Falls, South Dakota 57106
VBCLink.com | 605.361.8211



605.376.0127
Ryan@VBCLink.com

REGIONAL MAP



Sioux Falls



106

470th Street



Heritage Parkway

106

Tea



AREA MAP



470th Avenue



Linda Street



PARCEL MAP



PROPERTY PHOTOS

