

MANSFIELD CROSSING

CLASS A OFFICE SPACE
13224 E. MANSFIELD AVENUE
SPOKANE VALLEY, WASHINGTON

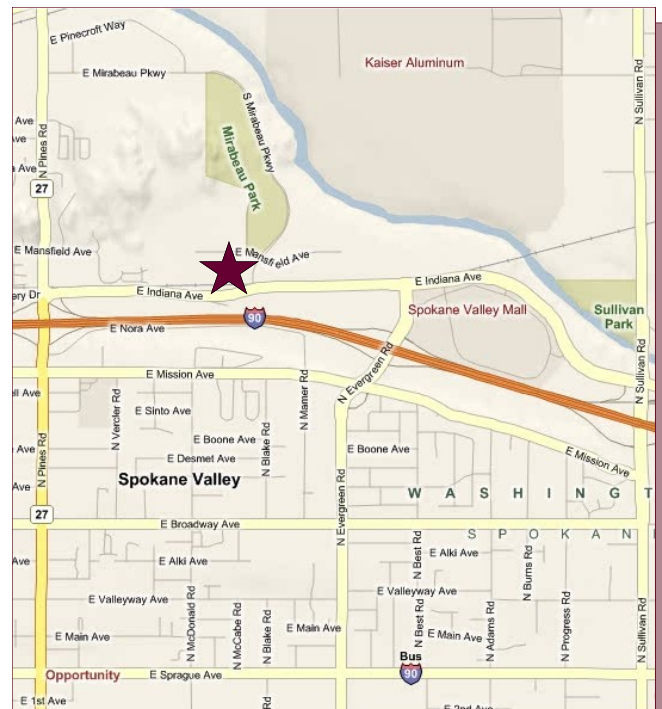
FOR LEASE



FEATURES

Location: 13224 E Mansfield
Premises: 2nd Flr, up to 14,190 RSF
(Divisible)
Rent: \$20.00/SF/Fully Serviced
Amenities:

- New Construction with Improvements Negotiable
- Located 1 Block from Valley YMCA
- Short 1 Mile Drive to Valley Mall Restaurants
- Easy Freeway Access via Evergreen Interchange
- Ample On-Site Free Parking



CONTACT

Craig R. Soehren
509.755.7548 ~ Direct
509.458.4014 ~ Fax
craigs@khco.com ~ E-Mail

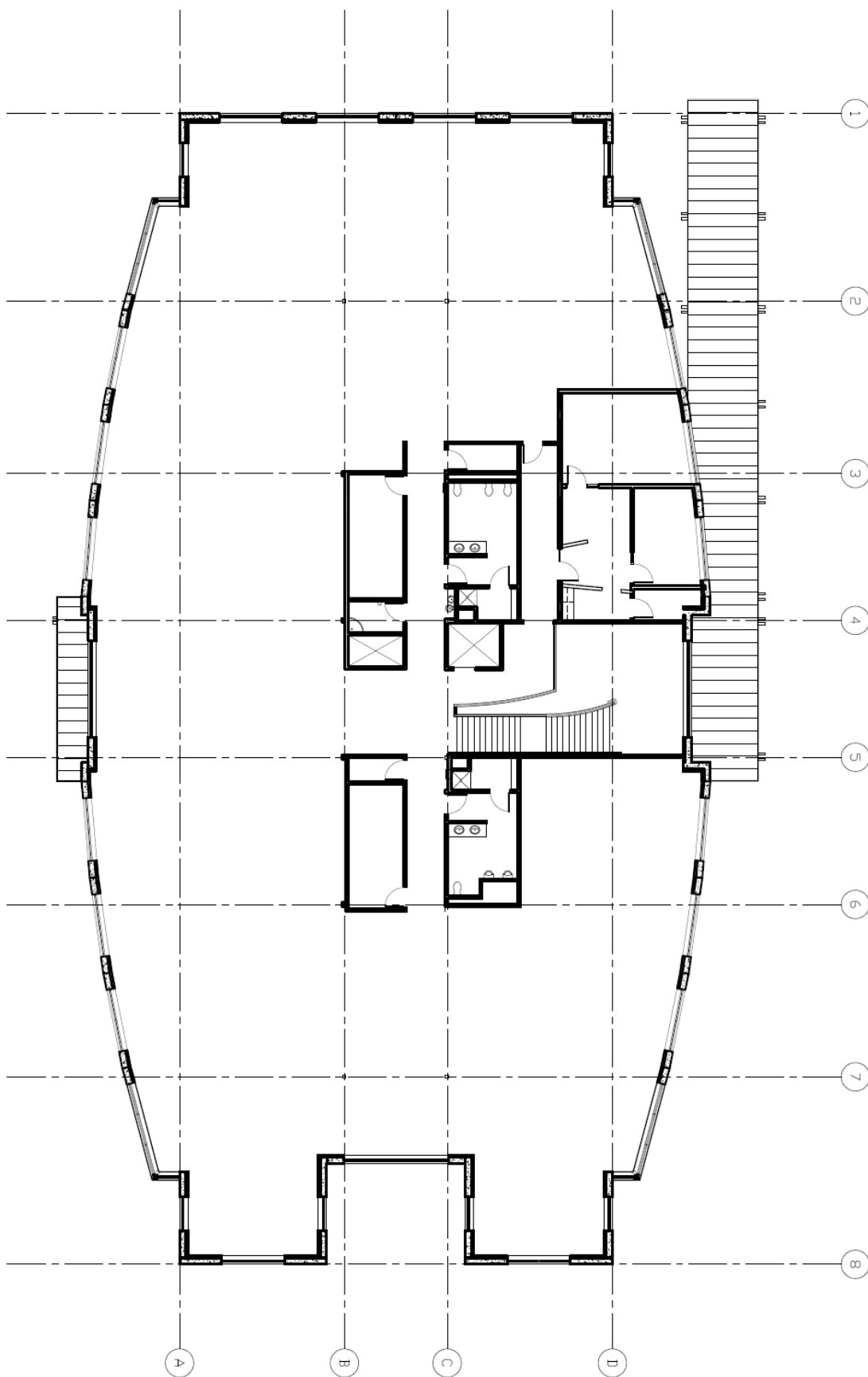
**KIEMLE &
HAGOOD
COMPANY**

601 W. Main Ave., Suite 400
Spokane, WA 99201
Main Phone: 509.838.6541
Fax: 509.458.4014
WWW.KHCO.COM

No warranty or representation, expressed or implied, is made by Kiemle & Hagood Company, its agents or its employees as to the accuracy of the information contained herein. All information furnished is from sources deemed reliable and submitted subject to errors, omissions, change of terms and conditions, prior sale, lease or financing, or withdrawal without notice. No one should rely solely on the above information, but instead should conduct their own investigation to independently satisfy themselves.

MANSFIELD CROSSING

FLOOR PLAN



CONTACT

Craig R. Soehren
509.755.7548 ~ Direct
509.458.4014 ~ Fax
craigs@khco.com ~ E-Mail

**KIEMLE &
HAGOOD
COMPANY**

601 W. Main Ave., Suite 400
Spokane, WA 99201
Main Phone: 509.838.6541
Fax: 509.458.4014
WWW.KHCO.COM

No warranty or representation, expressed or implied, is made by Kiemle & Hagood Company, its agents or its employees as to the accuracy of the information contained herein. All information furnished is from sources deemed reliable and submitted subject to errors, omissions, change of terms and conditions, prior sale, lease or financing, or withdrawal without notice. No one should rely solely on the above information, but instead should conduct their own investigation to independently satisfy themselves.

MANSFIELD CROSSING

AERIAL

CONTACT

Craig R. Soehren
509.755.7548 ~ Direct
509.458.4014 ~ Fax
craigs@khco.com ~ E-Mail

**KIEMLE &
HAGOOD
COMPANY**

601 W. Main Ave., Suite 400
Spokane, WA 99201
Main Phone: 509.838.6541
Fax: 509.458.4014
WWW.KHCO.COM



No warranty or representation, expressed or implied, is made by Kiemle & Hagood Company, its agents or its employees as to the accuracy of the information contained herein. All information furnished is from sources deemed reliable and submitted subject to errors, omissions, change of terms and conditions, prior sale, lease or financing, or withdrawal without notice. No one should rely solely on the above information, but instead should conduct their own investigation to independently satisfy themselves.