

Pioneer Plaza

1112 - 1194 West Pioneer Parkway, Arlington, TX 76013



Property Highlights

- Value class B garden style professional office park
- Over 5 parking spaces per 1,000 SF leased
- 24hr / 7 day a week access to your office & full control of the heating and cooling within your suite
- All suites are private and self contained (restrooms, offices, breakrooms, conference room)
- Move in ready offices ranging from 1,200 to 2,400 SF
- Prominent Tenant signage along Pioneer Parkway (Spur-303) and Division
- Efficient, flexible floor plans (layout)

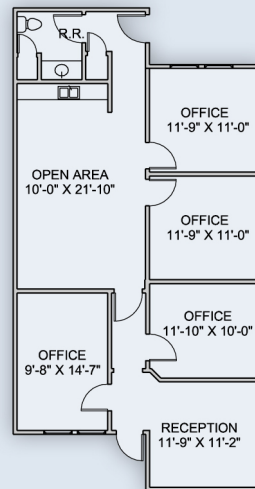


Contact Cole Moreano **214 - 995- 1797**
cmoreano@txreproperties.com
Kolby Dickerson **214 - 534-1599**
kdickerson@txreproperties.com

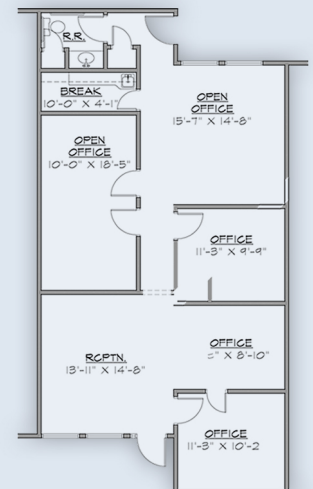


Amenities

- Professional local property management office focused on immediate resolution to tenant needs
- Close Proximity to 7 major medical centers
 - Cook Children's Hospital** (+-1.69 miles)
 - MCA -Medical Center Arlington** (+-1.65 miles)
 - USMD at Arlington** (+-2.47 miles)
 - Millwood Hospital** (+-3.23 miles)
 - Arlington Memorial Hospital** (+- 3.29 miles)
 - Texas Health Resources** (+-3.3 miles)
 - Kindred Hospital** (+-3.4 miles)
- Walking distance to shopping, casual dining, health club, and cultural centers



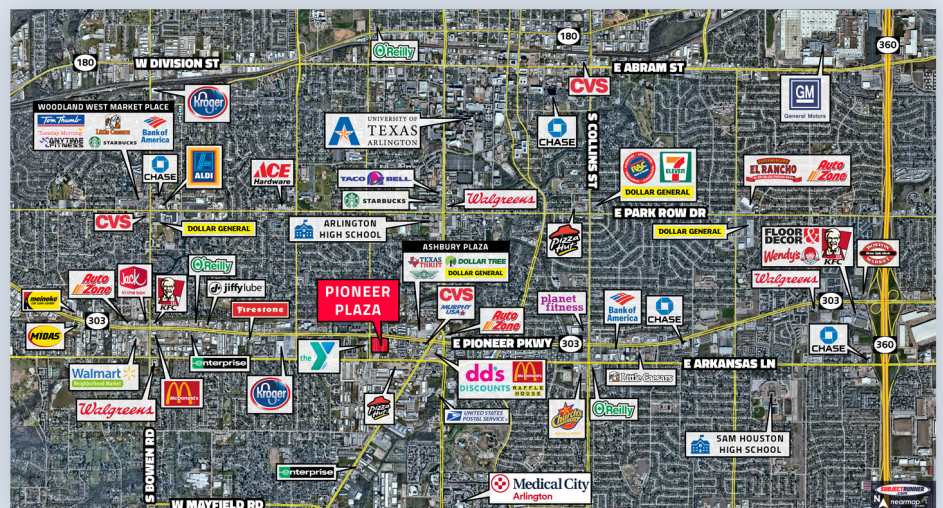
Suite 1140C
1,200 RSF



Suite 1190
1,200 RSF



Cole Moreano, 214-995-1797
 cmoreano@txreproperties.com
 Kolby Dickerson, 214-534-1599
 kdickerson@txreproperties.com
 leasing@txreproperties.com
 www.txreproperties.com



1112 - 1194 West Pioneer Parkway, Arlington, TX 76013