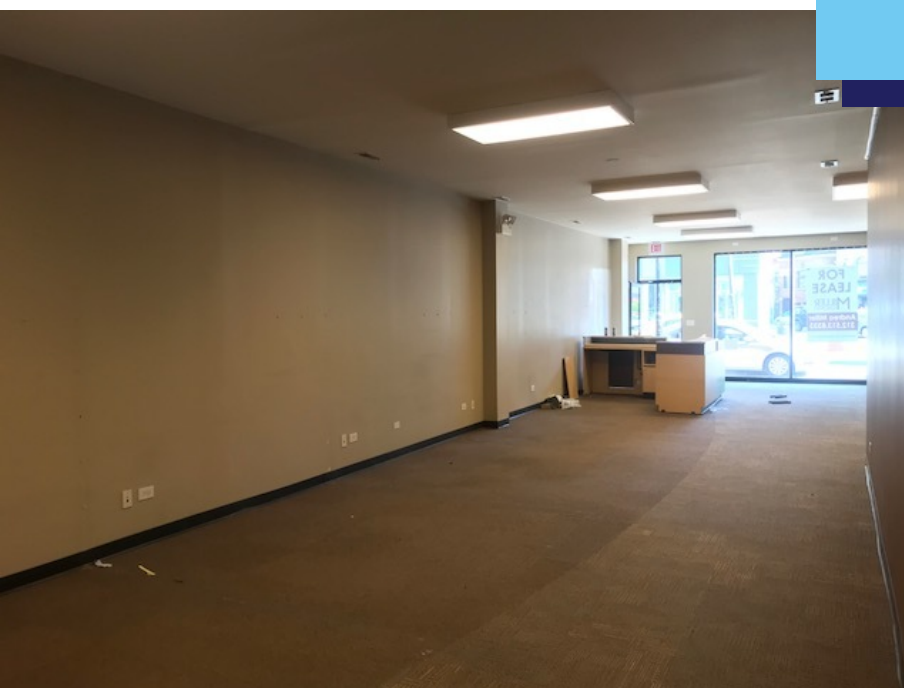


**SPACE
AVAILABLE**

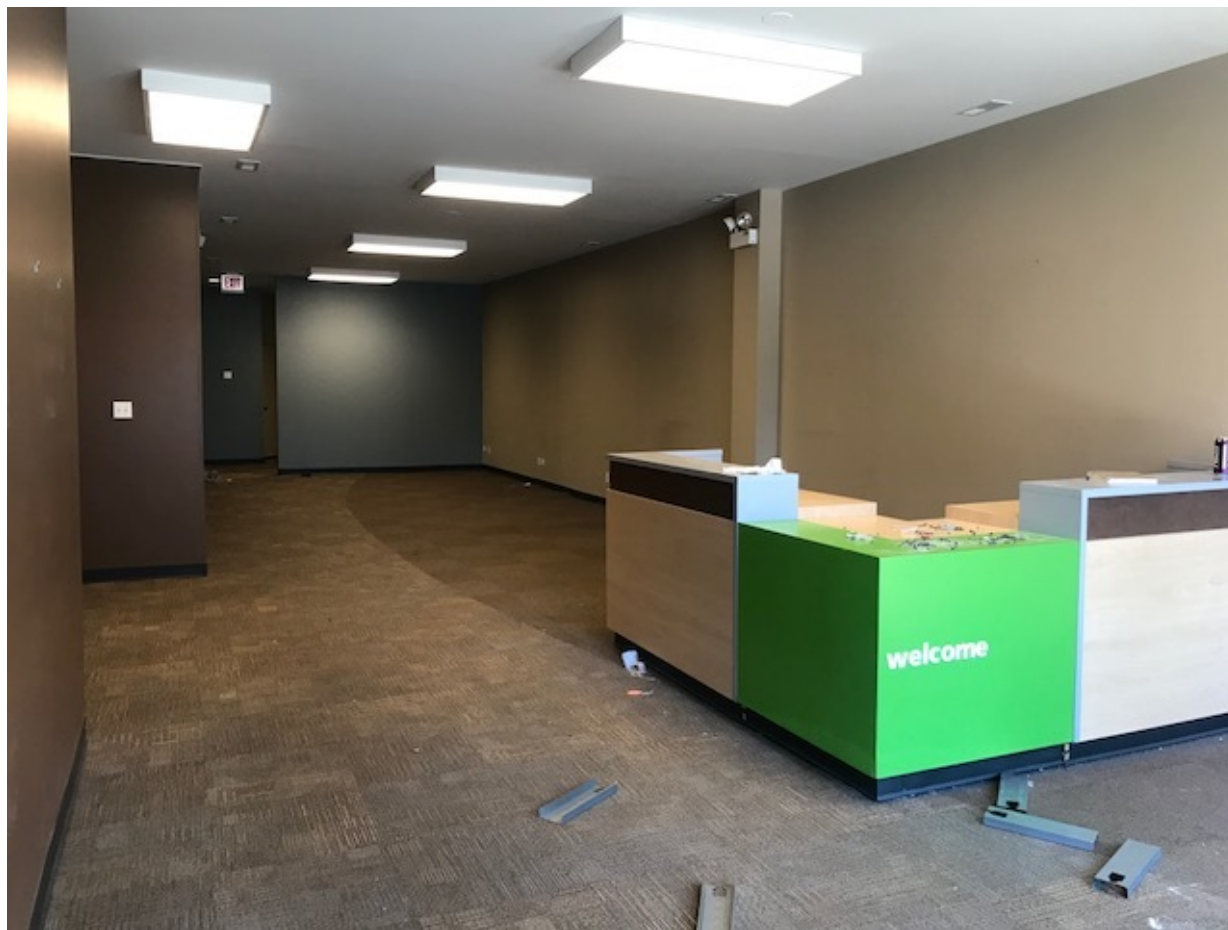
FOR LEASE
PRIME WICKER PARK
RETAIL / OFFICE
1232 N Milwaukee Avenue
Chicago, IL 60622



HIGHLIGHTS

Property Type: Retail / Office
Lease Type: NNN
Size: 1,136 Sq Ft
Zoning: B1-3
Alderman: La Spata

SNAPSHOT



- 1,136 Sq Ft move-in ready retail / office available in the heart of Wicker Park, at the corner of Ashland & Milwaukee at Division
- High visibility location with over 18,700 vehicles per day & a Walk Score of 98
- Situated in a dense retail corridor with heavy foot traffic - adjacent to H&R Block, with Chase Bank, Verizon, Dunkin' Donuts, CVS & Jewel-Osco within 2 blocks
- Conveniently located minutes to downtown, just 0.3 miles from I-90/I-94 Kennedy Expressway

TRANSIT



Steps to CTA
Division Blue Line
station



On CTA #56
Milwaukee bus route



Steps to #9 Ashland &
#70 Division bus routes

DEMOGRAPHICS



Population
1 Mile 51,652



Households
1 Mile 24,584



Avg Household Income
1 Mile \$127,757



Consumer Spending (\$000s)
1 Mile \$695,292

AREA MAP



TRAFFIC COUNT

N Milwaukee Ave 10,496

FLOOR PLANS

