

FOR LEASE: 970,978 SF

DCT BLAIR LOGISTICS CENTER

2600 Taylor Way
Port of Tacoma



PROJECT HIGHLIGHTS

- Two buildings totaling 970,978 SF
- Building A: 542,750 SF – Delivery Q2 2018
- Building B: 428,228 SF – Delivery Q4 2018
- 5.82 Acre Yard Storage – Delivery Q4 2018
- Concrete tilt and 36' clear-height
- 7" slab and ESFR sprinkler system
- Port Maritime Industrial Zoning (PMI), container storage, trailer storage, and outdoor storage allowed
- Next to piers in the Port of Tacoma
- Excellent I-5 access
- Within Foreign Trade Zone #86

CONTACT

Todd Clarke, Kidder Mathews
253.722.1422 • tclarke@kiddermathews.com

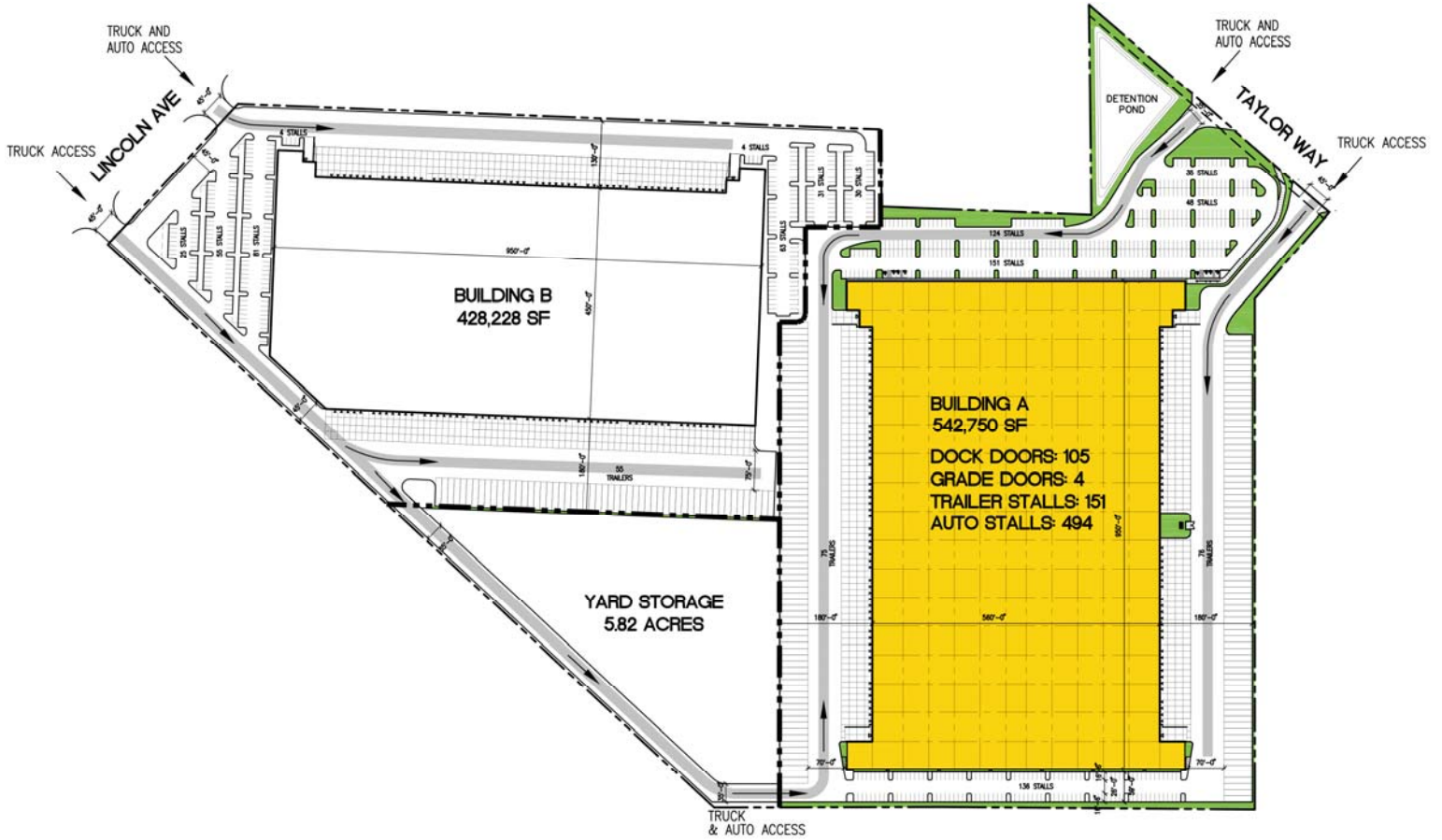
Matt Wood, Kidder Mathews
206.248.7306 • mwood@kiddermathews.com

Ty Clarke, Kidder Mathews
253.722.1419 • tyclarke@kiddermathews.com

FOR LEASE: 970,978 SF

DCT BLAIR LOGISTICS CENTER

2600 Taylor Way
Port of Tacoma



CONTACT

Todd Clarke, Kidder Mathews
253.722.1422 • tclarke@kiddermathews.com

Matt Wood, Kidder Mathews
206.248.7306 • mwood@kiddermathews.com

Ty Clarke, Kidder Mathews
253.722.1419 • tyclarke@kiddermathews.com

FOR LEASE: 970,978 SF

DCT BLAIR LOGISTICS CENTER

2600 Taylor Way
Port of Tacoma



BUILDING SPECIFICATIONS

SIZE

Building A: 542,750 SF

Building B: 428,228 SF

OFFICE

Build to suit

LOADING

Dock-high doors and grade-level doors

CLEAR

36'

POWER

Three-phase, 3,000+ amps @ 277/480 volts

TRUCK COURT

130'-180' truck courts with 60' concrete pad

LIGHTING

L.E.D. (15' foot candles measured 36" above floors)

SPRINKLER

ESFR

YARD AREA

5.82± acres of dedicated yard area. Can be fenced.

AUTO PARKING

651 stalls

TRAILER PARKING

206 stalls

BUILDING HIGHLIGHTS

- New concrete tilt up construction
- Port of Tacoma location
- 36' clear height
- ESFR sprinklers
- Q2 2018 Delivery



CONTACT

Todd Clarke, Kidder Mathews
253.722.1422 • tclarke@kiddermathews.com

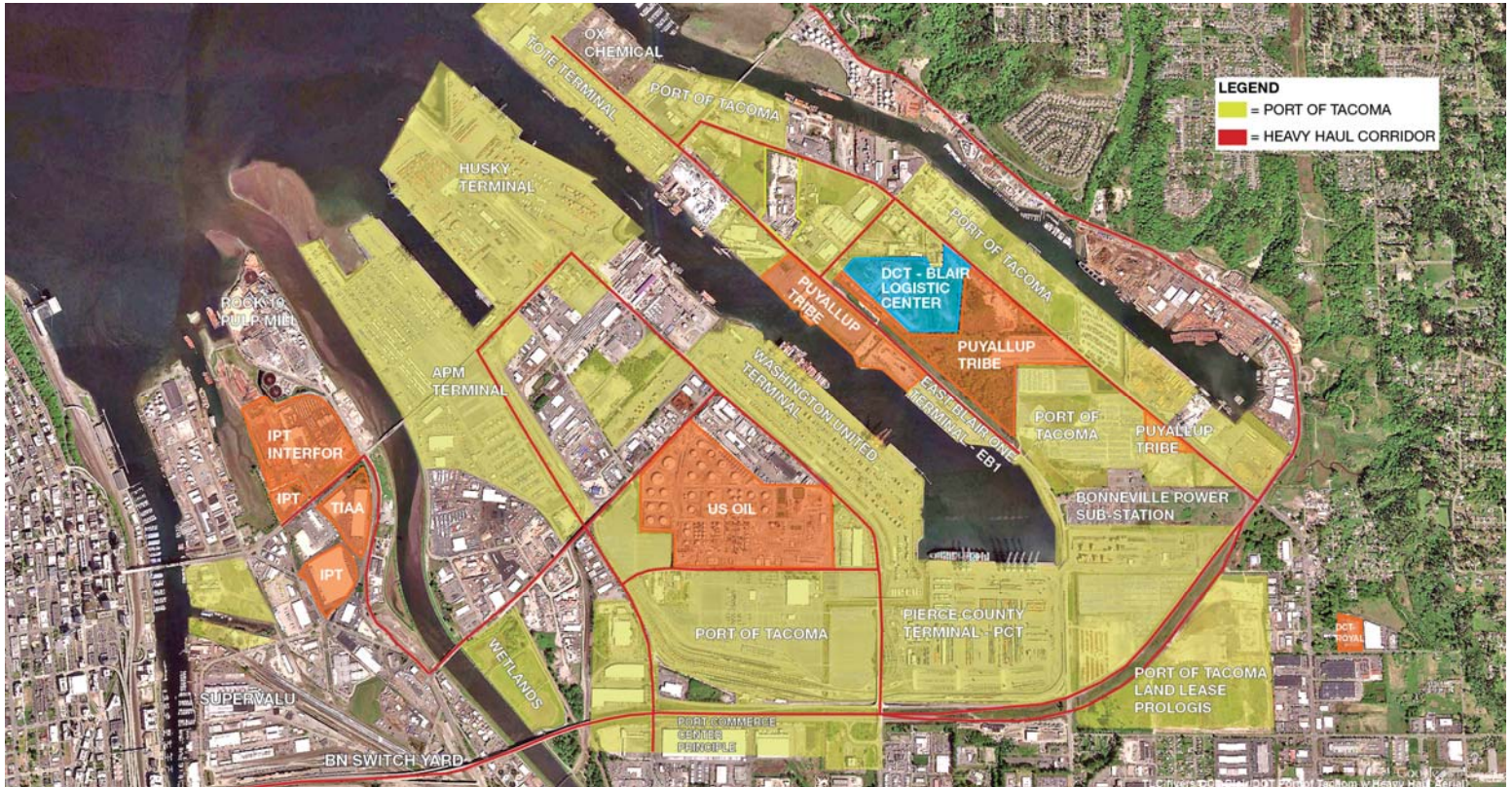
Matt Wood, Kidder Mathews
206.248.7306 • mwood@kiddermathews.com

Ty Clarke, Kidder Mathews
253.722.1419 • tyclarke@kiddermathews.com

FOR LEASE: 970,978 SF

DCT BLAIR LOGISTICS CENTER

2600 Taylor Way
Port of Tacoma



DCT Blair Logistics Center is located in the Port of Tacoma, with excellent access to Interstate 5 and Hwy 167 and the Seattle industrial market. In addition to access, the project boasts a modern industrial design, which creates a truly Class “A” industrial facility. It’s location within Foreign Trade Zone #86, large yard area, and Port Maritime Industrial zoning makes DCT Blair Logistics Center ideal for distribution users.

CONTACT

Todd Clarke, Kidder Mathews
253.722.1422 • tclarke@kiddermathews.com

Matt Wood, Kidder Mathews
206.248.7306 • mwood@kiddermathews.com

Ty Clarke, Kidder Mathews
253.722.1419 • tyclarke@kiddermathews.com