



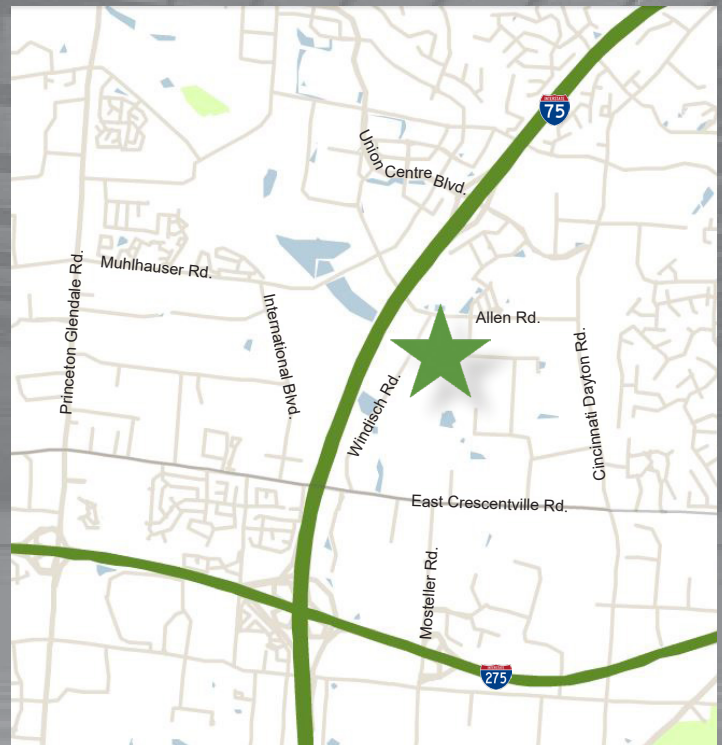
For Lease: 5,350 SF Available

First Park West Chester I 9786 Windisch Road | West Chester, OH 45069

First Park West Chester I is a 40,000 SF office warehouse building. Great West Chester location with easy access to I-275 and I-75. No earnings tax.

Highlights

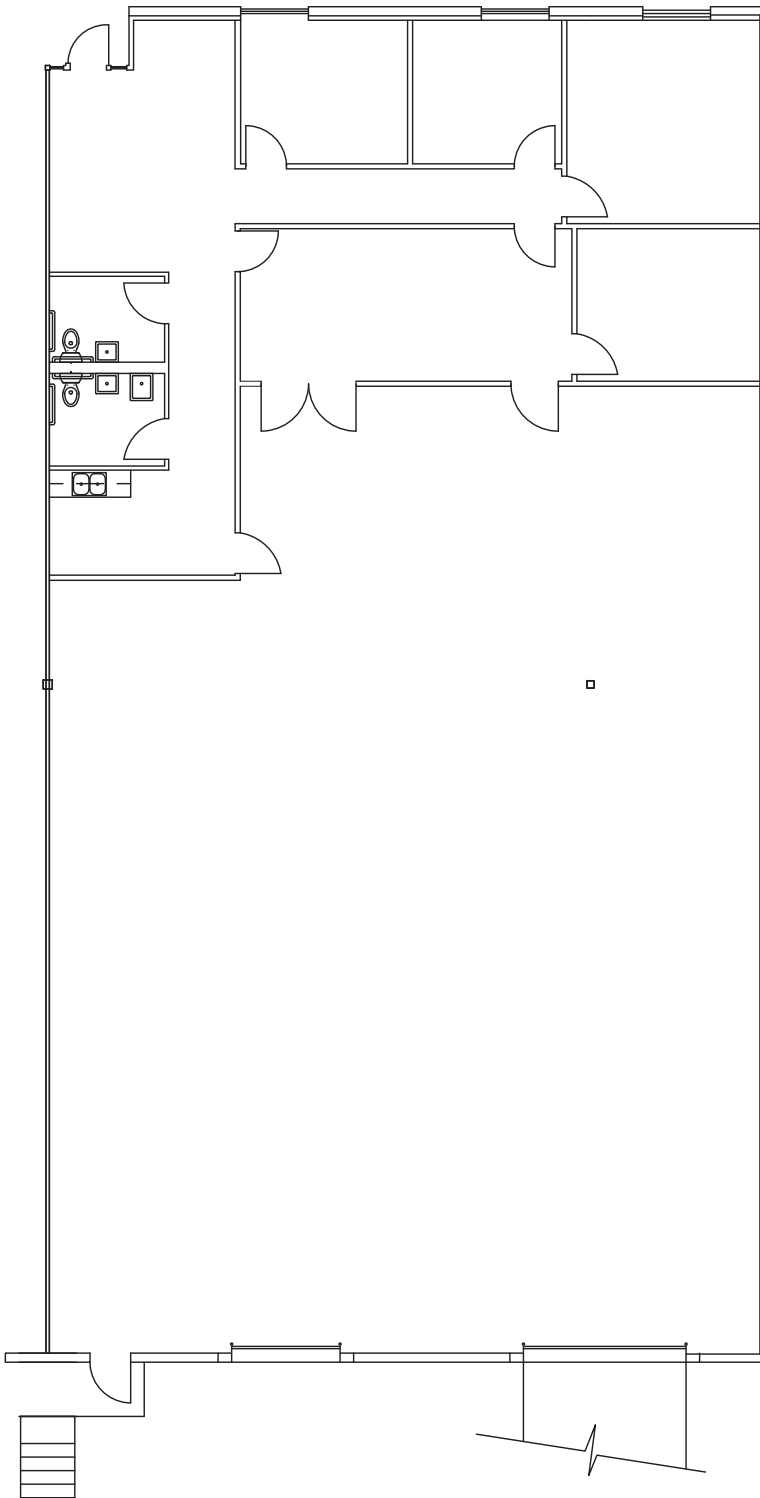
Available SF:	5,350
Office SF:	1,650
Ceiling Height:	20'
Column Spacing:	40' x 50'
Sprinkler System:	Wet
Loading:	1 (9' x 10') dock 1 (12' x 14') drive-in
Electrical:	208 v/ 3 Ph/ 200 amps
Warehouse Lighting:	T-5



First Park West Chester I

9786 Windisch Road | West Chester, OH 45069

Space Plan



Broker Contact:

Mark G. Volkman, SIOR
Senior Vice President
312 Walnut Street, Suite 3030
Cincinnati, OH 45202
Direct: (513) 252-2123
mark.volkman@am.jll.com



www.jll.com/cincinnati

Owner Contact:

Jim Schlundt
Market Leader/Regional Manager
10140 W. 76th Street
Eden Prairie, MN 55344
Direct: (952) 852-7171
jschlundt@firstindustrial.com



www.firstindustrial.com

All information furnished regarding the property for sale, rental or financing is obtained from sources deemed reliable. No representation is made to the accuracy thereof and is submitted subject to errors, omissions, change of price rental or other conditions, prior sale, lease, or financing, or withdrawal without notice. First Industrial Realty Trust, Inc. & Jones Lang LaSalle Americas, Inc. represents the Seller in this transaction and as such owes all duties and obligations thereto.