



Farm For Sale

Property Address: 1087 County Road 201, Cullman, Alabama 35053



- Site: 295 +/- AC, mostly pasture with some woods
- Includes:
 - 4 +/- AC lake with covered dock and additional ponds
 - 3 BR/2 BA house with screened/unscreened porches and detached 30'x30' 2-car garage
 - 1,825 +/- SF barn with large doors and partially finished bathroom
 - 1,700 +/- SF storage building with 5 10'x10' roll-up storage doors and 10'-14' ceiling height
 - Additional barn and storage buildings
- Parcel IDs: 28-03-05-0-000-022.000
28-03-08-0-000-001.000
28-02-04-0-001-051.002
- Approx. 1,150 feet combined frontage on CR-201 and approx. 185 feet frontage on CR-202

For more information, visit our website at www.lahcommercial.com



Sale Price: \$995,000

Pam Evans Ward - 205-266-4321 - pamw@lahrealestate.com

Bill Warren - 205-960-1787 - bwarren@lahcommercial.com

LAH Commercial Real Estate, 2850 Cahaba Road, Suite 200, Birmingham, AL 35223 - Office: (205)870-8580 - Fax: (205)870-7348

© 2019 LAH Commercial Real Estate, LLC

Information deemed reliable, but subject to verification



Sale Price: \$995,000

Pam Evans Ward - 205-266-4321 - pamw@lahrealestate.com

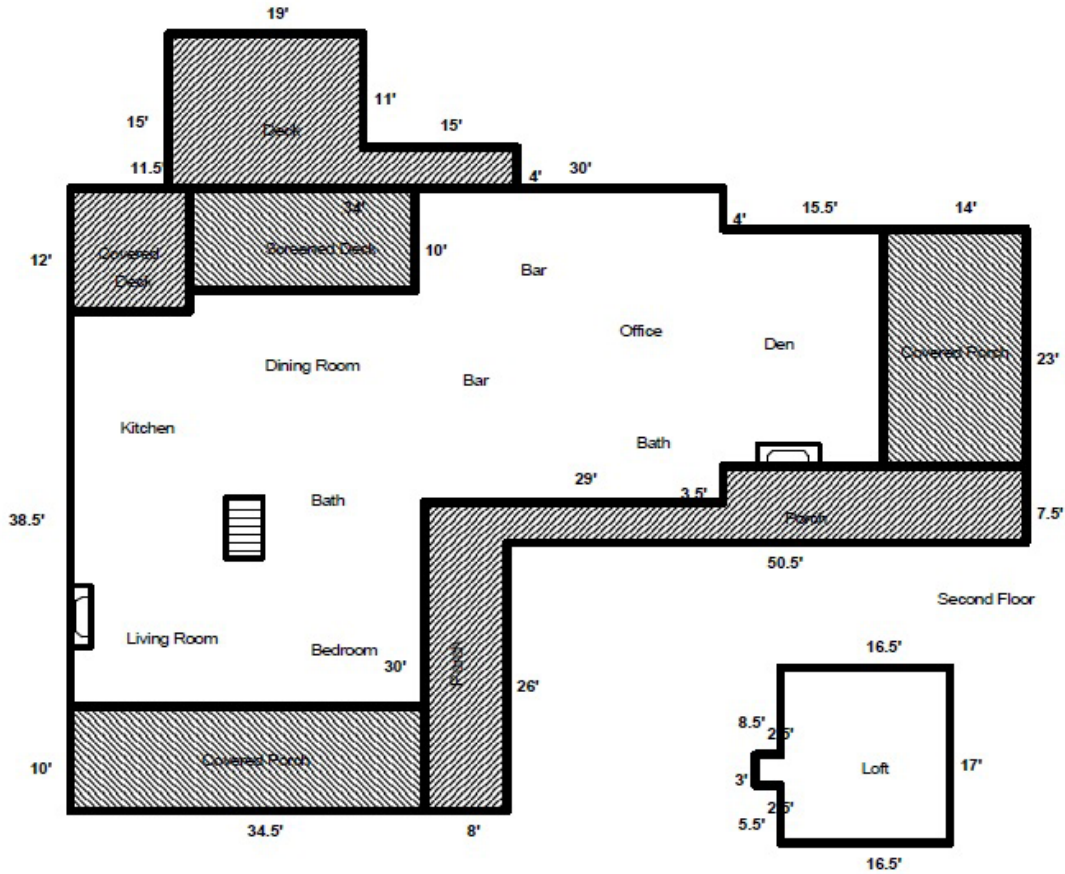
Bill Warren - 205-960-1787 - bwarren@lahcommercial.com

LAH Commercial Real Estate, 2850 Cahaba Road, Suite 200, Birmingham, AL 35223 - Office: (205)870-8580 - Fax: (205)870-7348

© 2019 LAH Commercial Real Estate, LLC

Information deemed reliable, but subject to verification

House Floorplan



4 +/- AC Lake Footprint

Covered Dock



Sale Price: \$995,000

Pam Evans Ward - 205-266-4321 - pamw@lahrealestate.com

Bill Warren - 205-960-1787 - bwarren@lahcommercial.com

LAH Commercial Real Estate, 2850 Cahaba Road, Suite 200, Birmingham, AL 35223 - Office: (205)870-8580 - Fax: (205)870-7348

© 2019 LAH Commercial Real Estate, LLC

Information deemed reliable, but subject to verification