



917 IRVING STREET
SAN FRANCISCO, CA 94122 | INNER SUNSET DISTRICT

**BRIGHT SPACIOUS SECOND FLOOR
OFFICE ON IRVING STREET**



INCORPORATED | EST. 1922

SHARON KIM

415.321.7491 | sk@brsf.co | DRE #01865334

DAVID BLATTEIS

415.321.7488 | db@brsf.co | DRE #00418305

sfretail.net

This Statement with the information it contains is given with the understanding that all negotiations relating to the purchase, renting or leasing of the property described above shall be conducted through Blatteis Realty Company. The above information, while not guaranteed, has been secured from sources believed to be reliable. Blatteis Realty has not verified its accuracy and make no guarantees, warranty or representation regarding this information and it is published subject to the possibility of errors, omissions, changes of listing information including price, term, financing, or withdrawal without notice. We include projections, estimates, opinions and/or assumptions, for example only, and they may not represent current or future performance of the property. You should consult your tax and legal advisors before to verify the validity of estimates.

44 Montgomery Suite 1288, San Francisco, CA 94104 | t: 415.981.2844 | f: 415.981.4986 | info@brsf.co | DRE #01421282

PRICE: 3,500/MONTH

INNER SUNSET DISTRICT

CROSS STREET: BETWEEN 10TH & 11TH AVENUE

±1,650 SF

OFFICE SPACE FOR LEASE

LOCATED ON THE MOST ACTIVE STREET
WITHIN THE INNER SUNSET DISTRICT

NOW AVAILABLE FOR LEASE

Enjoy a spacious 2nd Floor office situated in a prime, public transit-friendly location!
Highly-convenient for everyday commuters.

- Large windows providing natural lighting.
- Very close proximity to a variety of popular neighborhood cafes and restaurants.
- Easy access to MUNI light rail and bus lines.
 - Very close proximity to N-Judah light rail.
 - Very close proximity to 9th Avenue & Lincoln Way. Bus Lines: NX, 7, 7X, 44
 - Very close proximity to 9th Avenue & Judah Street. Bus Lines: 6, 43, 44, 66



INCORPORATED | EST. 1922

SHARON KIM

415.321.7491 | sk@brsf.co | DRE #01865334

DAVID BLATTEIS

415.321.7488 | db@brsf.co | DRE #00418305

sfretail.net

This Statement with the information it contains is given with the understanding that all negotiations relating to the purchase, renting or leasing of the property described above shall be conducted through Blatteis Realty Company. The above information, while not guaranteed, has been secured from sources believed to be reliable. Blatteis Realty has not verified its accuracy and make no guarantees, warranty or representation regarding this information and it is published subject to the possibility of errors, omissions, changes of listing information including price, term, financing, or withdrawal without notice. We include projections, estimates, opinions and/or assumptions, for example only, and they may not represent current or future performance of the property. You should consult your tax and legal advisors before to verify the validity of estimates.

INTERIOR PHOTOS



INCORPORATED | EST. 1922

SHARON KIM

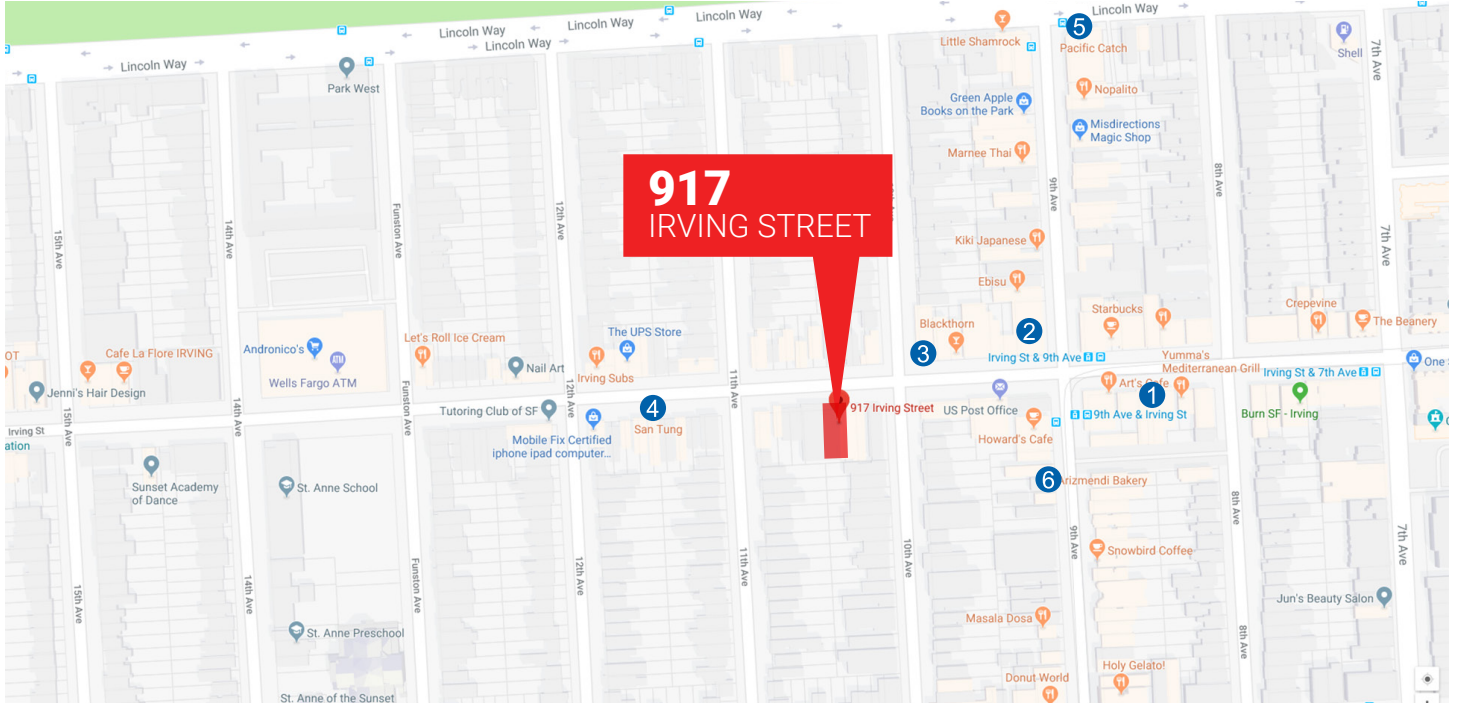
415.321.7491 | sk@brsf.co | DRE #01865334

DAVID BLATTEIS

415.321.7488 | db@brsf.co | DRE #00418305

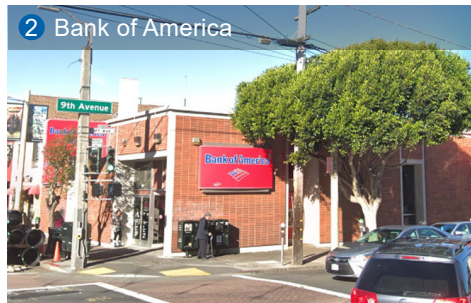
sfretail.net

This Statement with the information it contains is given with the understanding that all negotiations relating to the purchase, renting or leasing of the property described above shall be conducted through Blatteis Realty Company. The above information, while not guaranteed, has been secured from sources believed to be reliable. Blatteis Realty has not verified its accuracy and make no guarantees, warranty or representation regarding this information and it is published subject to the possibility of errors, omissions, changes of listing information including price, term, financing, or withdrawal without notice. We include projections, estimates, opinions and/or assumptions, for example only, and they may not represent current or future performance of the property. You should consult your tax and legal advisors before to verify the validity of estimates.



Popular Nearby Tenants

POPULAR NEARBY TENANTS



INCORPORATED | EST. 1922

SHARON KIM

415.321.7491 | sk@brsf.co | DRE #01865334

DAVID BLATTEIS

415.321.7488 | db@brsf.co | DRE #00418305

sfretail.net

This Statement with the information it contains is given with the understanding that all negotiations relating to the purchase, renting or leasing of the property described above shall be conducted through Blatteis Realty Company. The above information, while not guaranteed, has been secured from sources believed to be reliable. Blatteis Realty has not verified its accuracy and make no guarantees, warranty or representation regarding this information and it is published subject to the possibility of errors, omissions, changes of listing information including price, term, financing, or withdrawal without notice. We include projections, estimates, opinions and/or assumptions, for example only, and they may not represent current or future performance of the property. You should consult your tax and legal advisors before to verify the validity of estimates.