

# 100 Ryan Street, South Plainfield, NJ

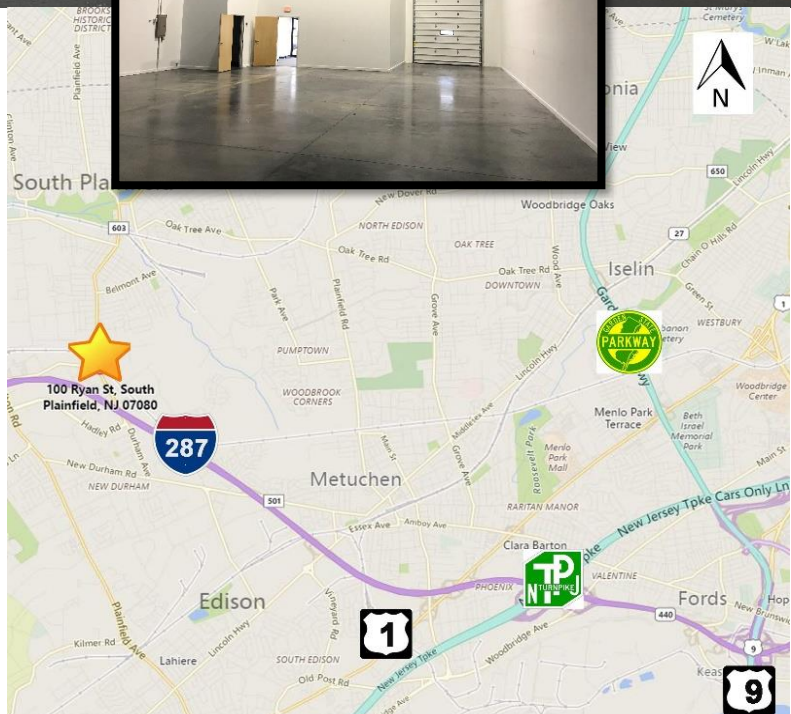
## 1,500 SF Units Available

*\$1,950 Month Gross Per Unit  
Plus Utilities & Snow Removal*



- Office: 225 SF
- Ceilings: 24' Clear
- Loading: 1 Drive-In
- Electric: 125 Amps  
3 Phase –  
120/208 Volts
- Heat: Gas
- Sprinkler: ESFR
- Parking: 4 Cars Per Unit

**AVAILABLE APRIL 2020**



For more information contact **EXCLUSIVE BROKER:**

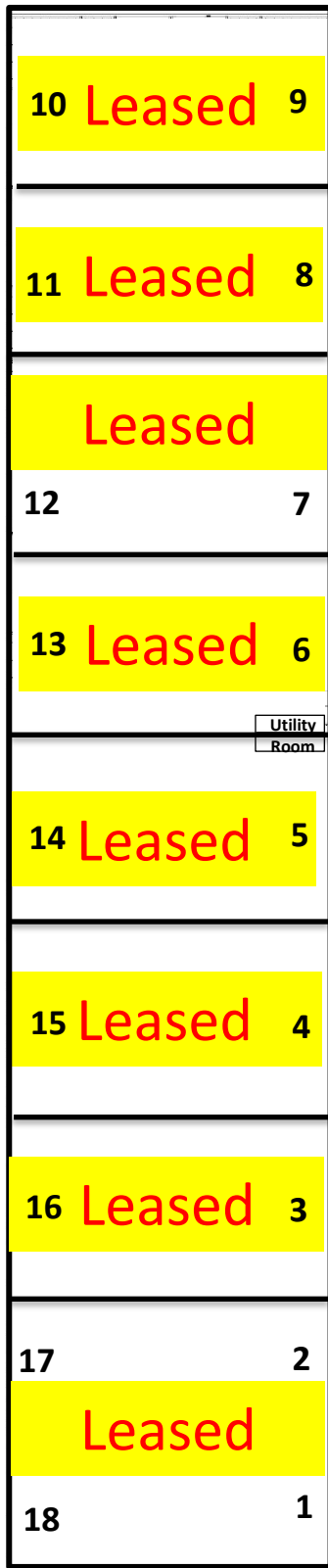
**Steve Bussel, SIOR, President | Cell (908) 507-4103 | BRCorp33@aol.com**  
Bussel Realty Corp. | 2 Ethel Road, Suite 202A, Edison, NJ 08817 | (732) 287-3777 | bussel.com

The information herein has been obtained from sources considered to be reliable, but no guarantee of its accuracy is made by the Company.  
Subject to error, omission or withdrawal without notice.

# 100 Ryan Street, South Plainfield, NJ

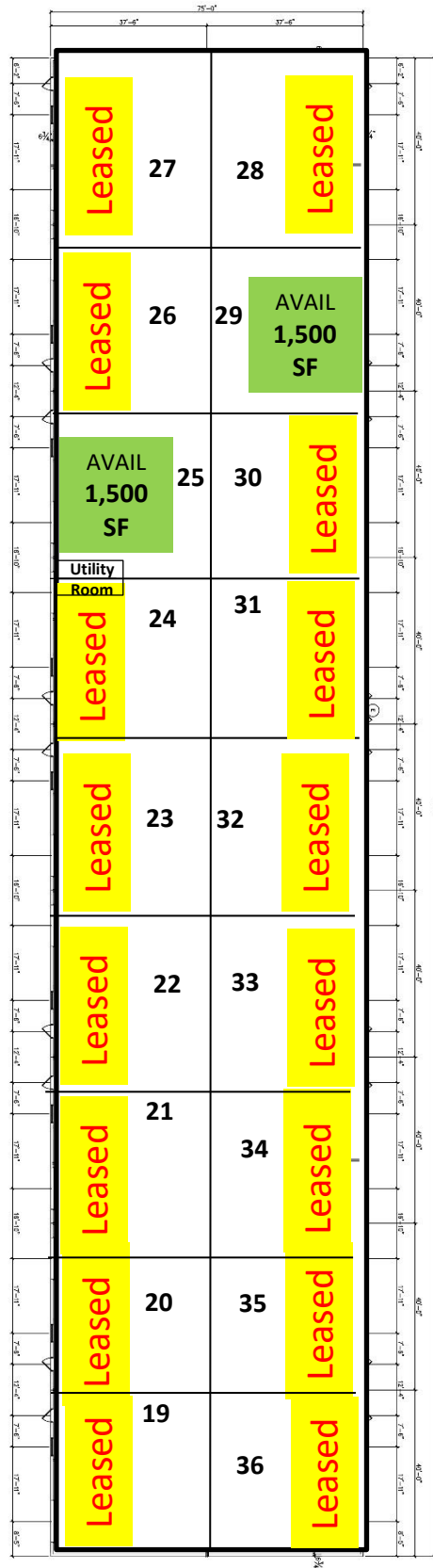
## Floor Plan

**A**



Building A

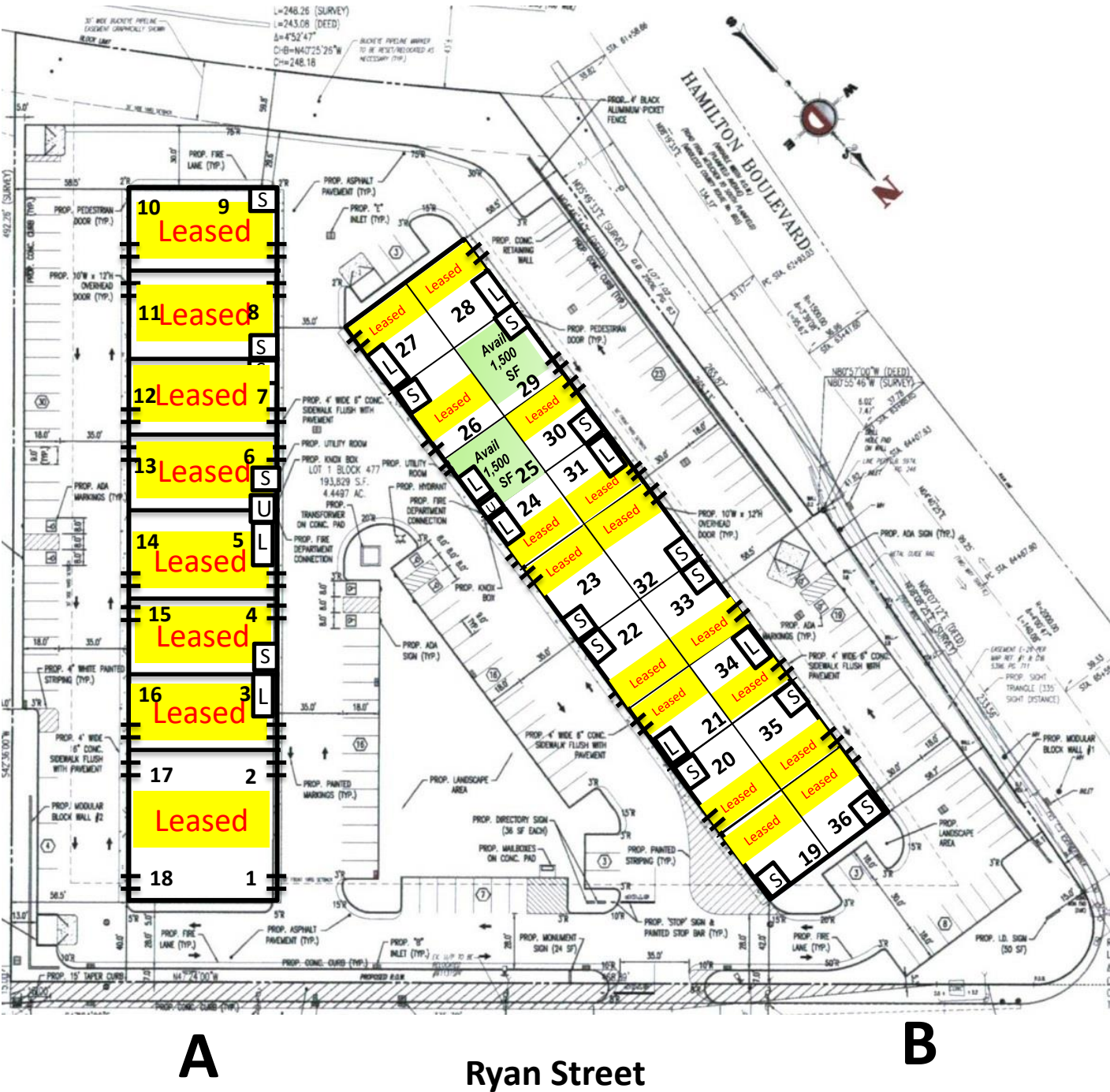
**B**



Building B

# 100 Ryan Street, South Plainfield, NJ

## Site Plan



For more information contact EXCLUSIVE BROKER:

**Steve Bussel, SIOR, President | Cell (908) 507-4103 | BRCorp33@aol.com**  
**Bussel Realty Corp.** 2 Ethel Road, Suite 202A, Edison, NJ 08817 | (732) 287-3777 | bussel.com

The information herein has been obtained from sources considered to be reliable, but no guarantee of its accuracy is made by the Company. In addition, no representation is made respecting measurements, dimensions, zoning, condition of title or any matters of a legal or environmental nature. Such matters should be referred to legal counsel for determination. Subject to error, omission or withdrawal without notice.