

27-29 E MAIN ST

SMITHTOWN, NY 11787

RETAIL SPACE
AVAILABLE



PLEASE CONTACT US WITH RETAIL LEASING INQUIRIES



Jordan Gorjian
516 926 3326 x16
JordanJ@GorjianAcq.com

27-29 E MAIN ST

SMITHTOWN, NY 11787

RETAIL SPACE
AVAILABLE



PROPERTY INFORMATION

- High traffic
- Parking in the front and rear
- Easy access to the space
- Near Stony Brook University
- Near 4 hospitals

4,656 SF RETAIL SPACE

DEMOGRAPHICS

	1 Mile	3 Miles
Population	6,593	66,443
Median Income	\$124,435	\$119,634
Avg. Age	40.8 Years	40.9 Years
Total households	2,252	22,379

PLEASE CONTACT US WITH RETAIL LEASING INQUIRIES

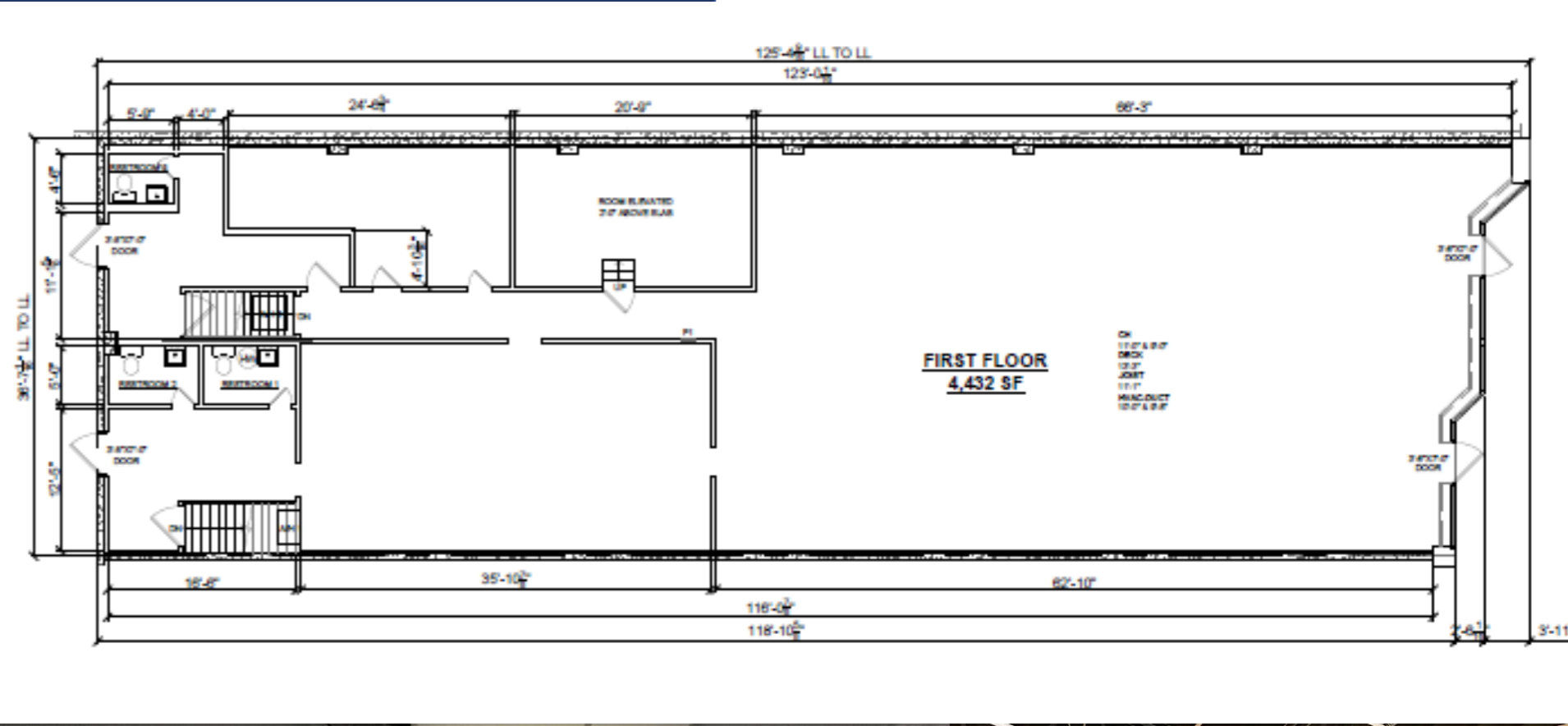
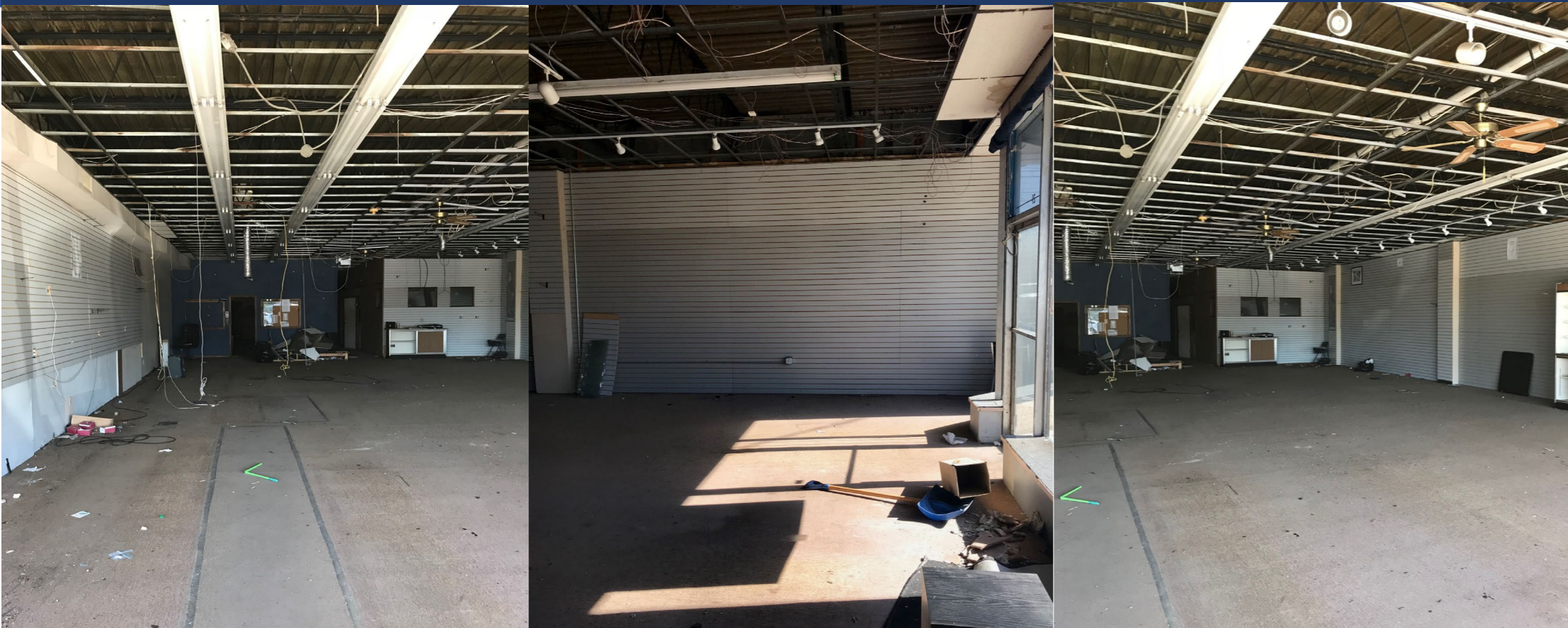


Jordan Gorjian
516 926 3326 x16
JordanJ@GorjianAcq.com

27-29 E MAIN ST

SMITHTOWN, NY 11787

RETAIL SPACE
AVAILABLE



PLEASE CONTACT US WITH RETAIL LEASING INQUIRIES



Jordan Gorjian
516 926 3326 x16
JordanJ@GorjianAcq.com