

Publix #0606 -Lakeside Square at Logger's Run

11650 West Palmetto Park Road
Boca Raton, FL 33428
Lat 26.348, Long -80.233

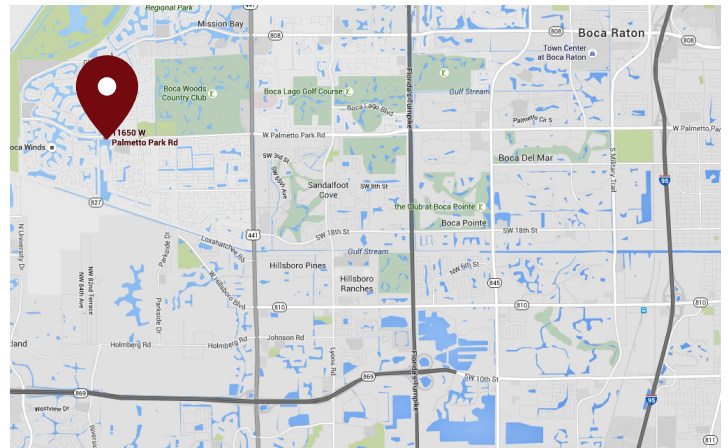
FOR LEASE



900 SF AVAILABLE

PROPERTY HIGHLIGHTS

- Palm Beach County Market
- Located in a Residential Area/Section of Boca Raton
- Average Household Income Over \$100,000 Within a 5-Mile Radius
- Adjacent to Logger's Run Middle School
- Traffic Count: 13,017 VPD



DEMOGRAPHICS	1 Mile	3 Miles	5 Miles
Total Population	8,868	74,695	210,215
Daytime Population	7,549	66,010	188,898
Total Households	3,134	25,708	77,534
Avg. HH Income	\$138,829	\$129,529	\$117,713

Data provided by Placer Labs Inc. (www.placer.ai) & Esri

Michael Rautbord

561.447.8529 | mrautbord@crossmanco.com
890 North Federal Highway, Suite 434, Boca Raton, FL

Licensed Real Estate Broker. No warranty expressed or implied has been made to the accuracy of the information provided herein, no liability assumed for error or omission.



Crossman & Company

www.crossmanco.com

Publix #0606 -Lakeside Square at Logger's Run

11650 West Palmetto Park Road

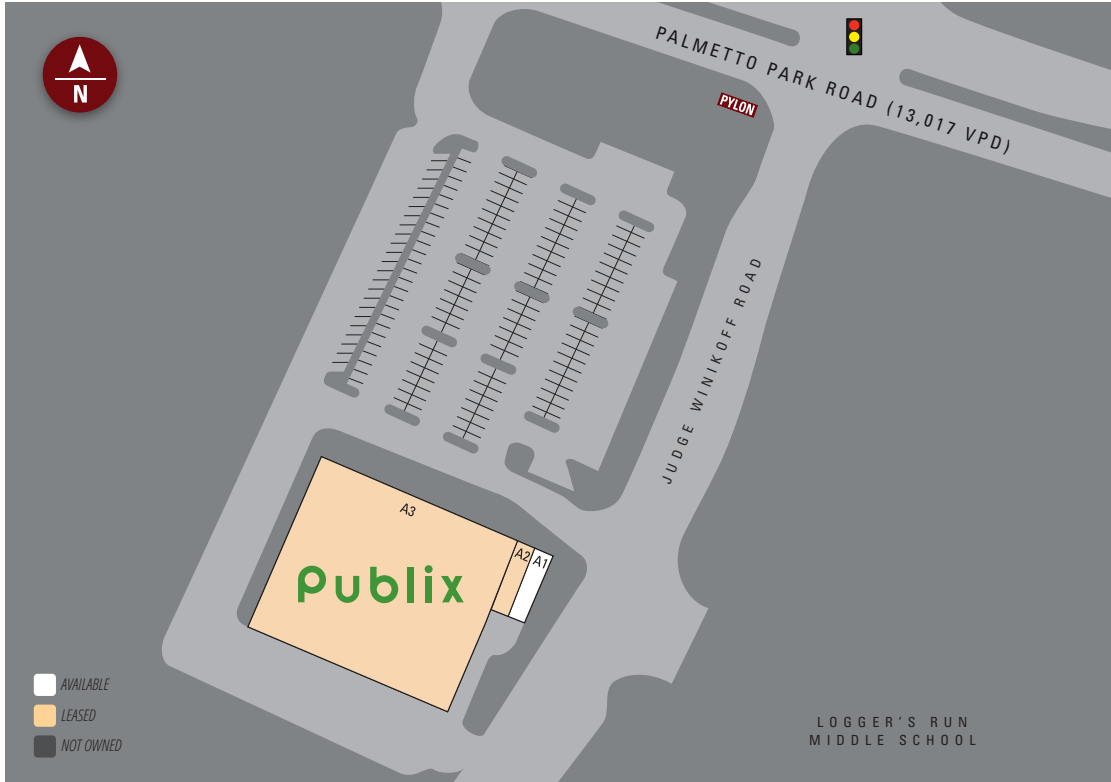
Boca Raton, FL 33428

Lat 26.348, Long -80.233

SITE PLAN

Suite	Tenant	Size
A3	Publix	37,887
A2	Bocas Premier Dry Cleaners	900
A1	AVAILABLE	900

TOTAL 39,687



Michael Rautbord

561.447.8529 | mroutbord@crossmanco.com

890 North Federal Highway, Suite 434, Boca Raton, FL

Licensed Real Estate Broker. No warranty expressed or implied has been made to the accuracy of the information provided herein, no liability assumed for error or omission.



Crossman & Company

www.crossmanco.com

Publix #0606 -Lakeside Square at Logger's Run

11650 West Palmetto Park Road
Boca Raton, FL 33428
Lat 26.348, Long -80.233

FOOT TRAFFIC OVERVIEW

EST. # OF CUSTOMERS ANNUALLY



EST. # OF VISITS ANNUALLY



AVG. VISITS / CUSTOMER



AVG. LENGTH-OF-STAY / VISIT



TOP 3 DAYS



Sunday	125,836
Saturday	114,332
Monday	101,193

OF VISITS

TOP 3 HOURS

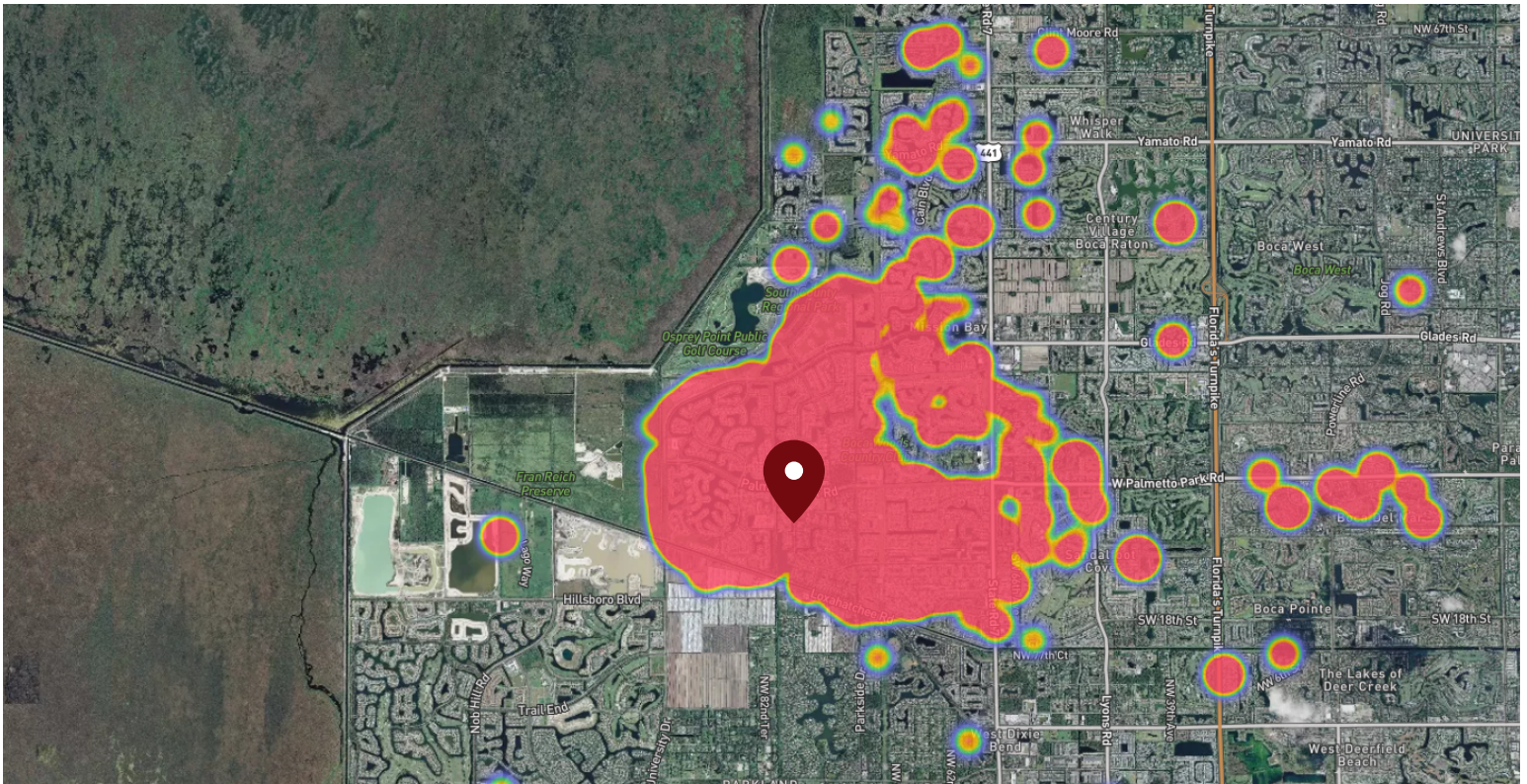


4-5 PM	130,865
6-7 PM	124,204
3-4 PM	115,164

OF VISITS

Data provided by Placer Labs Inc. (www.placer.ai) Nov 1, 2019 - Oct 31, 2020

SITE VISIT DENSITY



Red, orange, and yellow colors represent the location of 60% of site visitors

Data provided by Placer Labs Inc. (www.placer.ai)

Michael Rautbord

561.447.8529 | mroutbord@crossmanco.com

890 North Federal Highway, Suite 434, Boca Raton, FL

Licensed Real Estate Broker. No warranty expressed or implied has been made to the accuracy of the information provided herein, no liability assumed for error or omission.



www.crossmanco.com