



BAYPORT LOGISTICS PARK

Pasadena, Texas

Building Information:

- Located in Bayport North Industrial Park
- 175,032 SF
- Office space - build to suit
- Trailer parking
- Rail served
- 130' truck court
- Oversized drive-in ramps (12' x 16')
- 27 dock doors
- ESFR sprinkler system
- 32' clear height
- 60' speed bay
- Abundant employee parking

Proximity to Major Thoroughfares:

- ± 4 miles to Highway 225
- ± 5 miles to Barbour's Cut Terminal
- ± 4.5 miles to Bayport Terminal
- ± 3.5 miles to Highway 146

FOR LEASING INFORMATION:

B. Kelley Parker III, SIOR

Vice Chairman
+1 713 963 2896
kelley.parker@cushwake.com

John F. Littman, SIOR

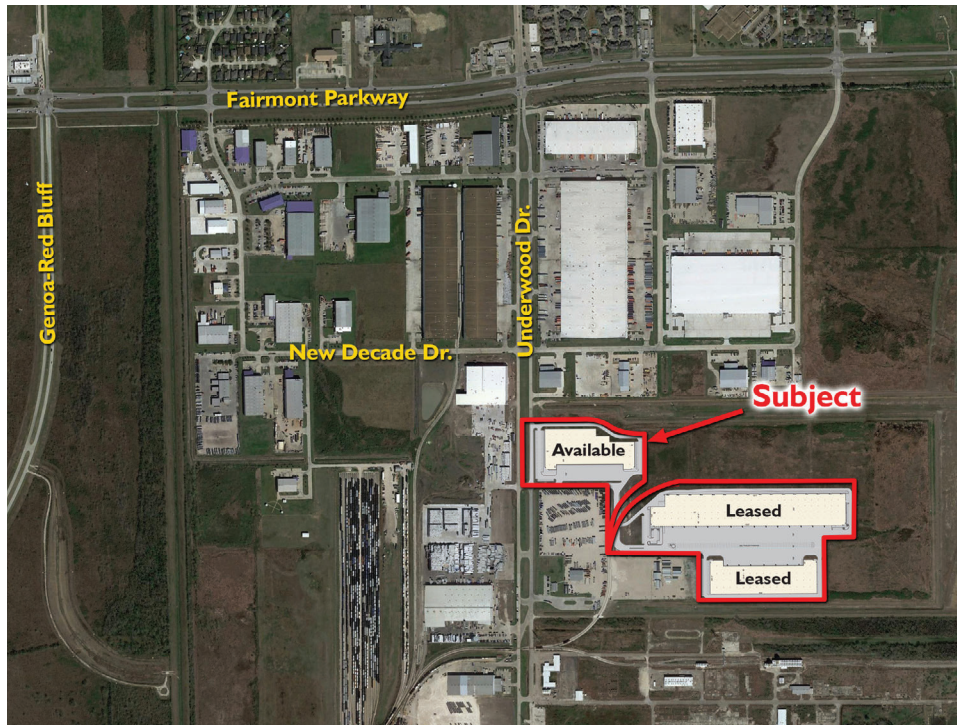
Executive Managing Director
+1 713 963 2862
john.littman@cushwake.com

Coe Parker, SIOR

Senior Director
+1 713 963 2825
coe.parker@cushwake.com



Sample Building Image



Site Location

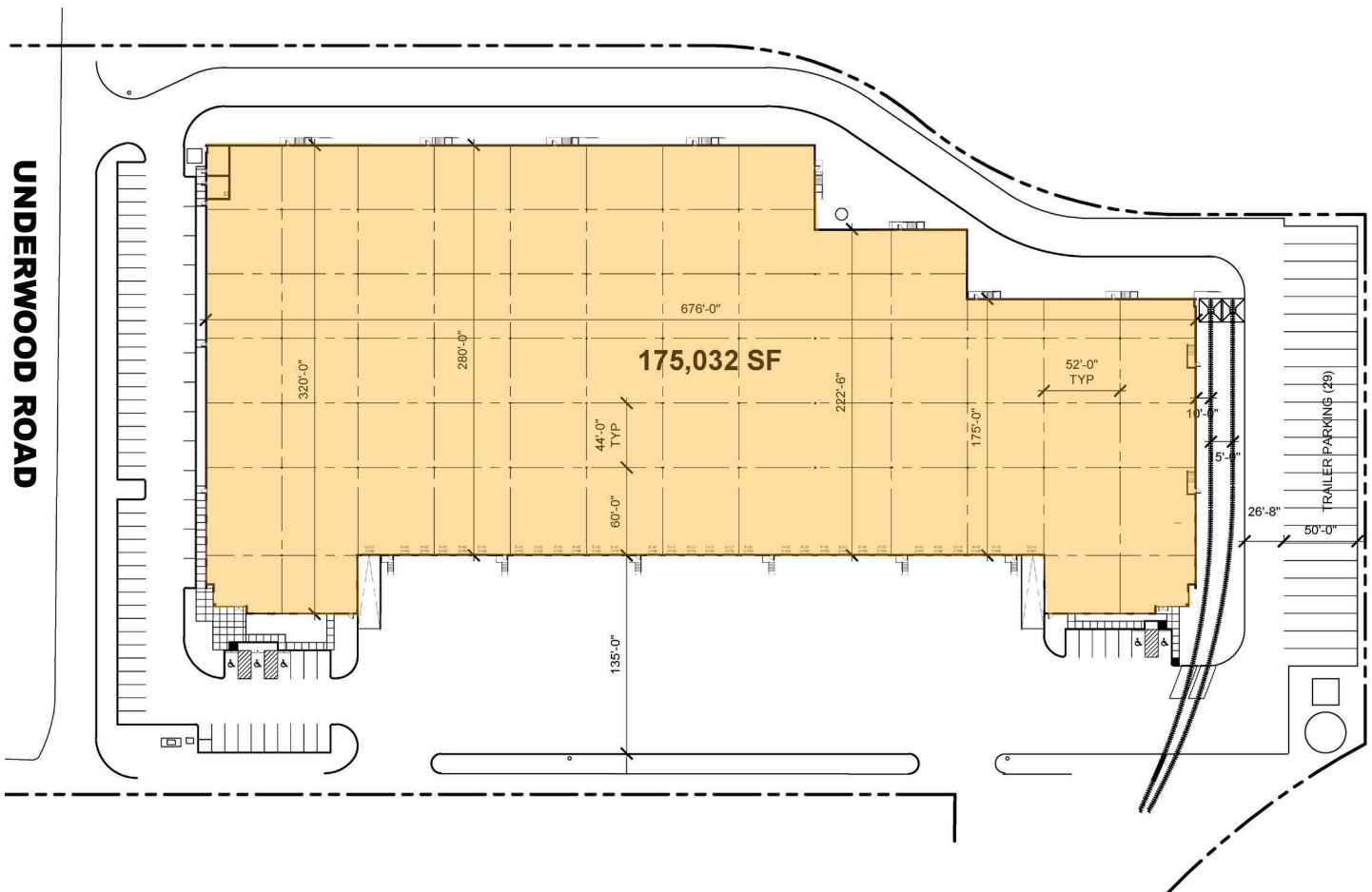




BAYPORT

LOGISTICS PARK

SITE PLAN



**FOR LEASING
INFORMATION:**



B. Kelley Parker III, SIOR

Vice Chairman

+1 713 963 2896

kelley.parker@cushwake.com

John F. Littman, SIOR

Executive Managing Director

+1 713 963 2862

john.littman@cushwake.com

Coe Parker, SIOR

Senior Director

+1 713 963 2825

coe.parker@cushwake.com

