

WEST VILLAGE

NEW YORK  
NY

# 33 GREENWICH AVENUE



# SPACE DETAILS

## LOCATION

West block between Charles and West 10th Streets

## APPROXIMATE SIZE

Ground Floor 615 SF

## POSSESSION

Immediate

## TERM

Negotiable

## FRONTAGE

22 FT on Greenwich Avenue

## SITE STATUS

Currently Joseph Hanna

## NEIGHBORS

Rosemary's, Mah-Ze-Dahr Bakery, Jonathan Adler, Bluestone Lane, The Meatball Shop, Two Boots, Roasting Plant Coffee, Equinox, Mighty Quinn's Barbeque, Feit and Greenwich Steakhouse

## COMMENTS

Excellent small space opportunity with unparalleled frontage

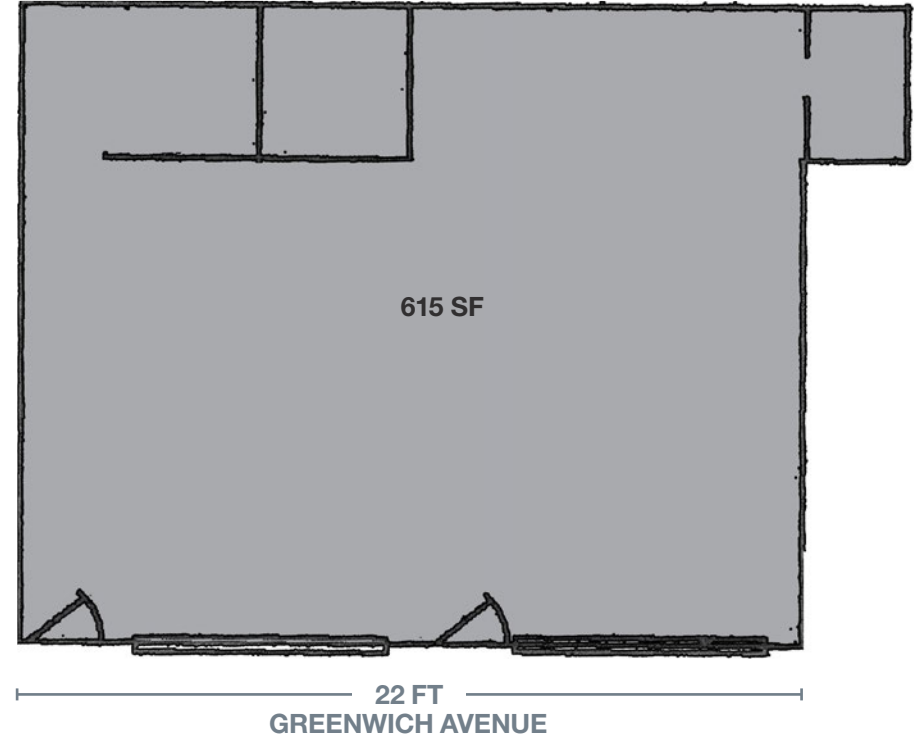
Divisions considered

Most uses considered

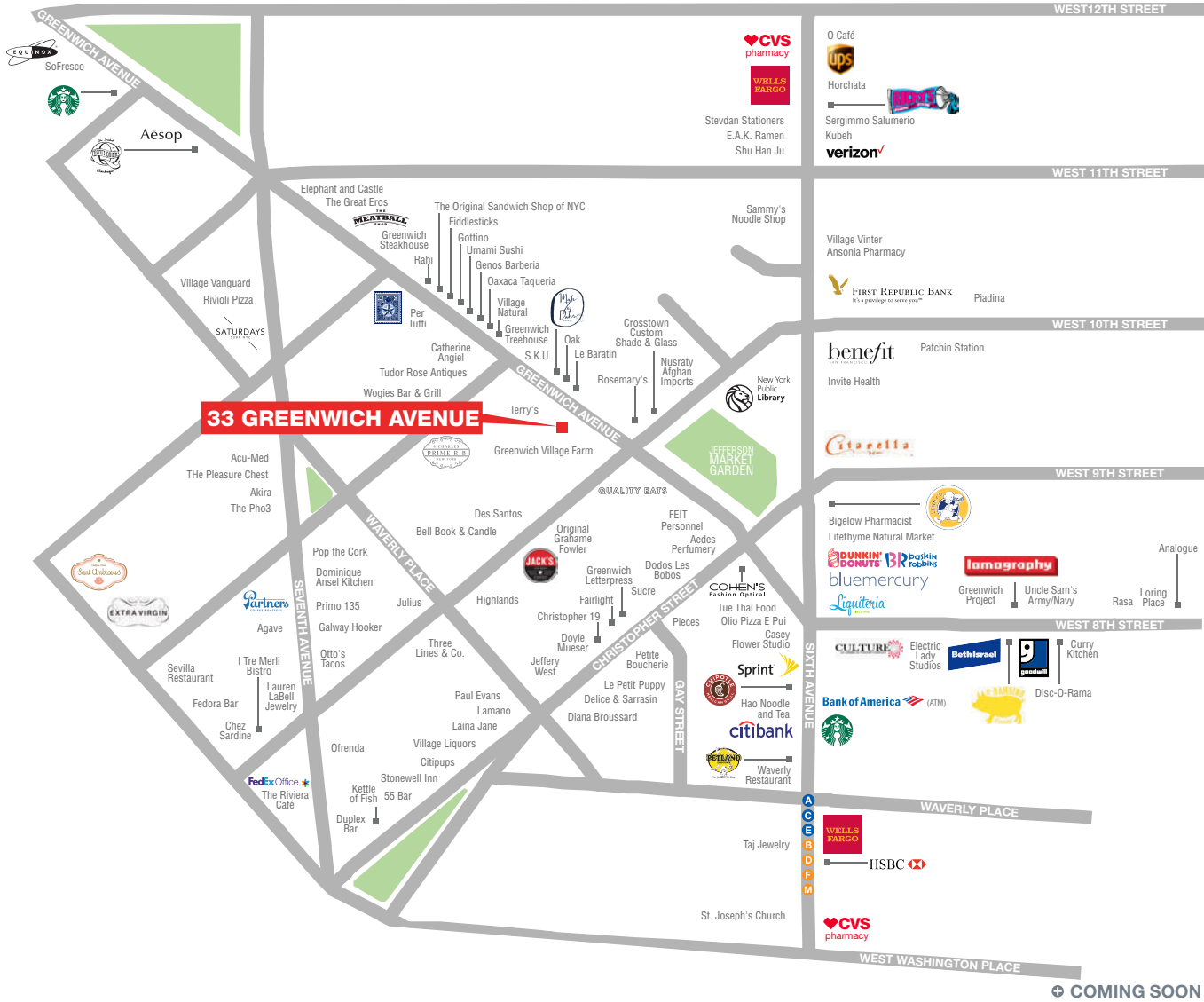
Two blocks from the West 4th Street subway station servicing the **A C E B D F M** trains with an annual ridership of 13,955,067

Strong retail adjacencies including apparel, fitness, and food and beverage tenants

## GROUND FLOOR



# AREA RETAIL



**CONTACT**  
EXCLUSIVE  
AGENT

**ANDREW STERN**  
212.351.9353  
andrew.stern@ngkf.com



NGKF.COM

© 2019 NEWMARK KNIGHT FRANK RETAIL. The information contained herein has been obtained from sources deemed reliable but has not been verified and no guarantee, warranty or representation, either express or implied, is made with respect to such information. Terms of sale or lease and availability are subject to change or withdrawal without notice.