

CHESTERFIELD MEADOWS

6401 Centralia Rd, Chesterfield, VA 23832



LOCATION OVERVIEW

At signalized intersection of Iron Bridge and Centralia Roads
Close proximity to Route 288



PROPERTY HIGHLIGHTS

- 40,846 SF Former Martins Grocery Store Available (Potential up to 52,143 SF available)
- Lease Expiration 2/29/2020 plus options
- High Daytime population since one mile from Chesterfield County Central Government Complex
- Center benefits from multiple points of ingress and egress
- Traffic Counts: Iron Bridge Rd: 24,000 AADT Centralia Blvd: 8,900 AADT

DEMOGRAPHICS

	1 MILE	3 MILES	5 MILES
Population	5,662	30,211	79,276
Households	1,980	11,227	28,777
Average Household Income (\$)	71,598	83,919	81,819

EXCLUSIVE AGENT(S)

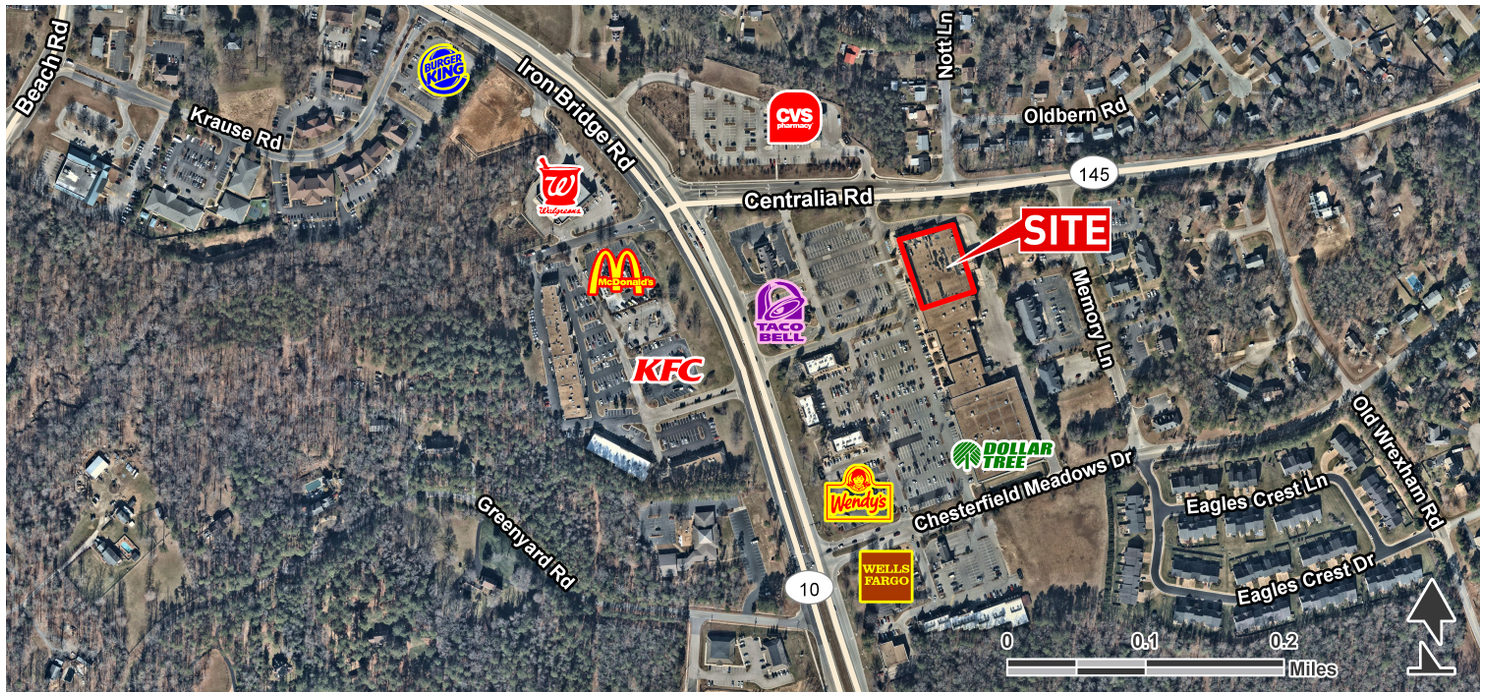
DAVID ANDREWS, CCIM • david.andrews@tscg.com • 804.673.1100

CHRISTINA MAYHUGH • christina.mayhugh@tscg.com • 804.673.1100



CHESTERFIELD MEADOWS

6401 Centralia Rd, Chesterfield, VA 23832



SUITE

Former Martin's

TENANT NAME

Available

SPACE SIZE

40,846 SF

EXCLUSIVE AGENT(S)

DAVID ANDREWS, CCIM • david.andrews@tscg.com • 804.673.1100

CHRISTINA MAYHUGH • christina.mayhugh@tscg.com • 804.673.1100

