



MARSHALL SQUARE

IN DOWNTOWN REDWOOD CITY

901 • 1001 MARSHALL STREET

REDWOOD CITY, CALIFORNIA

WWW.MARSHALLSQUAREDTRC.COM

HIGH END
TECH SUITE
AVAILABLE
NOW!



CLICK TO VIEW 
360° INTERACTIVE TOUR

Mike Moran
Executive Managing Director
+1 650 401 2121
mike.moran@cushwake.com
LIC #00901003

Ben Paul
Managing Principal
+1 650 401 2123
ben.paul@cushwake.com
LIC #01210872

Chris Blom
Senior Associate
+1 650 931 2210
chris.blom@cushwake.com
LIC #02031205

View Site Specific
COVID-19
PREVENTION PLAN

 **CUSHMAN &
WAKEFIELD**



MARSHALL SQUARE

IN DOWNTOWN REDWOOD CITY

901 • 1001 MARSHALL STREET
REDWOOD CITY, CALIFORNIA



WALKERS PARADISE



VERY BIKEABLE

PROJECT HIGHLIGHTS

±135,000 Total Project Size

- Exterior Renovations Underway
- 3.0/1,000 Parking Ratio
- 5-10 Minutes to Caltrain & Downtown Amenities
- Covered Parking

AVAILABILITY HIGHLIGHTS

1001 Marshall	±15,221 SF	Full Floor - Available Now CLICK TO VIEW 360° INTERACTIVE TOUR
901 Marshall	±30,093 SF	2 Full Floors - Available 11/1/2020 1 st Floor ±14,139 SF - Available 11/1/2020 2 nd Floor ±15,954 SF - Available 11/1/2020

Mike Moran
Executive Managing Director
+1 650 401 2121
mike.moran@cushwake.com
LIC #00901003

Ben Paul
Managing Principal
+1 650 401 2123
ben.paul@cushwake.com
LIC #01210872

Chris Blom
Senior Associate
+1 650 931 2210
chris.blom@cushwake.com
LIC #02031205

WWW.MARSHALLSQUAREDTRC.COM



**LOBBY RENOVATION
COMING SOON!**



Mike Moran
Executive Managing Director
+1 650 401 2121
mike.moran@cushwake.com
LIC #00901003

Ben Paul
Managing Principal
+1 650 401 2123
ben.paul@cushwake.com
LIC #01210872

Chris Blom
Senior Associate
+1 650 931 2210
chris.blom@cushwake.com
LIC #02031205



**MARSHALL
SQUARE**

IN DOWNTOWN REDWOOD CITY

**NEWLY COMPLETED
SPEC WORK**



**CLICK TO VIEW
360° INTERACTIVE TOUR** 

Mike Moran
Executive Managing Director
+1 650 401 2121
mike.moran@cushwake.com
LIC #00901003

Ben Paul
Managing Principal
+1 650 401 2123
ben.paul@cushwake.com
LIC #01210872

Chris Blom
Senior Associate
+1 650 931 2210
chris.blom@cushwake.com
LIC #02031205

HYPOTHETICAL FURNITURE FLOORPLAN

Suite 400 | ±15,221 SF

- Full Floor Opportunity
- Large Open Office Areas
- Can Fit ±122 Benching Stations
- 4 Conference Rooms
- 4 Private Offices
- 2 Phone Rooms
- Open Cafè Style Break Area

AVAILABLE NOW

CLICK TO VIEW  360° INTERACTIVE TOUR



Mike Moran
Executive Managing Director
+1 650 401 2121
mike.moran@cushwake.com
LIC #00901003

Ben Paul
Managing Principal
+1 650 401 2123
ben.paul@cushwake.com
LIC #01210872

Chris Blom
Senior Associate
+1 650 931 2210
chris.blom@cushwake.com
LIC #02031205



**HYPOTHETICAL
FLOORPLAN**

Suite 100 | ±14,139 SF

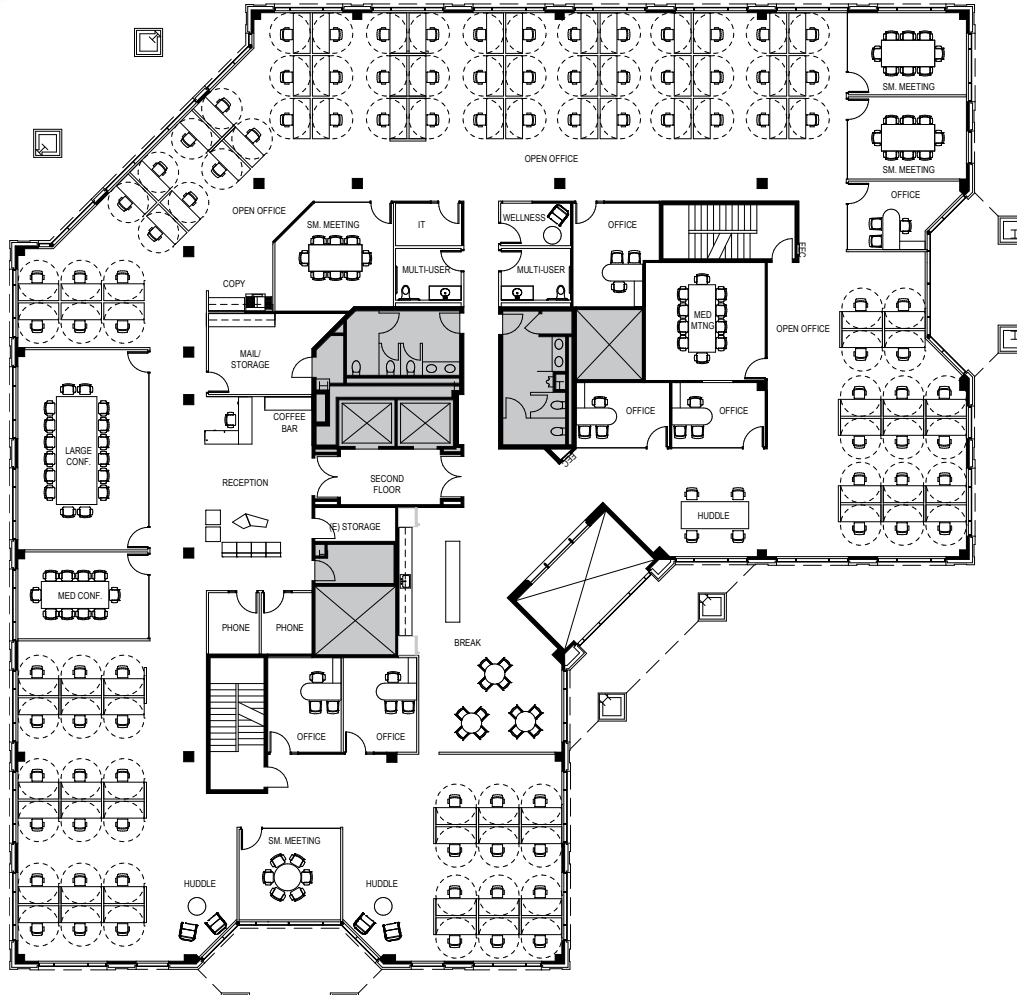
- Full Floor Opportunity
- Can be Divided
Suite 100 - 9,510 RSF
Suite 125 - 2,180 RSF
Suite 150 - 2,449 RSF
- Tenant Improvements Available

AVAILABLE 11/1/2020

Mike Moran
Executive Managing Director
+1 650 401 2121
mike.moran@cushwake.com
LIC #00901003

Ben Paul
Managing Principal
+1 650 401 2123
ben.paul@cushwake.com
LIC #01210872

Chris Blom
Senior Associate
+1 650 931 2210
chris.blom@cushwake.com
LIC #02031205



**CREATIVE TECH
HYPOTHETICAL FLOORPLAN**

Suite 200 | ±15,954 SF

- Full Floor Opportunity
- Open Office Layout
- Tenant Improvements Available

AVAILABLE 11/1/2020

Mike Moran
Executive Managing Director
+1 650 401 2121
mike.moran@cushwake.com
LIC #00901003

Ben Paul
Managing Principal
+1 650 401 2123
ben.paul@cushwake.com
LIC #01210872

Chris Blom
Senior Associate
+1 650 931 2210
chris.blom@cushwake.com
LIC #02031205



**PROFESSIONAL SERVICES
HYPOTHETICAL FLOORPLAN**

Suite 200 | ±15,954 SF

- Full Floor Opportunity
- Private Office Layout
- Tenant Improvements Available

AVAILABLE 11/1/2020

Mike Moran
Executive Managing Director
+1 650 401 2121
mike.moran@cushwake.com
LIC #00901003

Ben Paul
Managing Principal
+1 650 401 2123
ben.paul@cushwake.com
LIC #01210872

Chris Blom
Senior Associate
+1 650 931 2210
chris.blom@cushwake.com
LIC #02031205

MARSHALL SQUARE

IN DOWNTOWN REDWOOD CITY

80+ AMENITIES WITHIN WALKING DISTANCE



RESTAURANTS/FOOD

1 Broadway Masala	11 Rockn Wraps & Kabobs	21 Nikkos Mexican Pub	31 Timber and Salt
2 Bluefin Sushi	12 Old Port Lobster Shack	22 The Courthouse 2021	32 Chipotle
3 Quinto Sol	13 Go Fish Poke Bar	23 La Victoria Taqueria	33 Alhambra Irish House
4 Pizza My Heart	14 Vesta	24 West Park Farm and Sea	34 Five Guys
5 The Old Spaghetti Factory	15 Vino Santo Bistro	25 Angelicas	35 May's
6 La Viga Seafood & Cocina Mexicana	16 Yokohama	26 The Patty Shack	36 Nick The Greek
7 LV MAR	17 Margaritas	27 Talk of Broadway	37 Tacos El Grullense
8 Portabello Grill	18 Sakura Sushi	28 Pasha	38 Venga Empanadas
9 Arya Global Cuisine	19 The Sandwich Spot	29 Donato Enoteca	
10 Oyster Boy Seafood & Raw Bar	20 Orenchi Ramen	30 Milagros	

ENTERTAINMENT

1 Century Theatres (19 Screens)	3 Club Fox
2 Fox Theatre (2,000 Seat Capacity)	4 Courthouse Square (Countless Outdoor Events)

CLASS A RESIDENTIAL DEVELOPMENTS

1 64 Veterans Blvd.	264 Units	Completed 6/14
2 429 Fuller St.	133 Units	Completed 10/15
3 735 Brewster Ave.	18 Townhomes	Completed 10/15
4 201 Marshall St.	116 Units	Completed 6/14
5 333 Main St.	132 Units	Completed 3/14
6 525 Middlefield Rd.	471 Units	Completed 1/16
7 601 Main St.	196 Units	Completed 3/16
8 113 Monroe St.	305 Units	Completed 8/15
9 1548 Maple St.	131 Units	Deliver 2021
10 707 Bradford St.	117 Units	Deliver 2022
11 1409 El Camino	350 Units	Deliver 2020
12 849 Veterans Blvd.	90 Units	Completed 2019

COFFEE, DRINKS & DESSERTS

1 Coupa Cafe	10 Mademoiselle Colette
2 Red Giant Coffee	11 Cyclismo Cafe
3 Cafe La Tartine	12 Revere Coffee & Tea
4 Chatime	13 Teaspoon
5 Joe & The Juice	14 CRU
6 Froyola Yogurt	15 The Blacksmith
7 Starbucks Reserve	16 The Nighthawk
8 Peets Coffee	17 Bubble & Wrap
9 Philz Coffee	

MARSHALL SQUARE

IN DOWNTOWN REDWOOD CITY

WORLD-RENOWNED COMPANIES



Mike Moran
Executive Managing Director
+1 650 401 2121
mike.moran@cushwake.com
LIC #00901003

Ben Paul
Managing Principal
+1 650 401 2123
ben.paul@cushwake.com
LIC #01210872

Chris Blom
Senior Associate
+1 650 931 2210
chris.blom@cushwake.com
LIC #02031205

MARSHALL SQUARE

IN DOWNTOWN REDWOOD CITY

TRANSPORTATION



Drive Time:

Hwy 280 (Farm Hill Exit) to Project: **13 Minutes**

Hwy 101 NB (Whipple Rd. Exit) to Project: **6 Minutes**

Hwy 101 SB (Whipple Rd. Exit) to Project: **5 Minutes**



Mike Moran

Executive Managing Director
+1 650 401 2121
mike.moran@cushwake.com
LIC #00901003

Ben Paul

Managing Principal
+1 650 401 2123
ben.paul@cushwake.com
LIC #01210872

Chris Blom

Senior Associate
+1 650 931 2210
chris.blom@cushwake.com
LIC #02031205