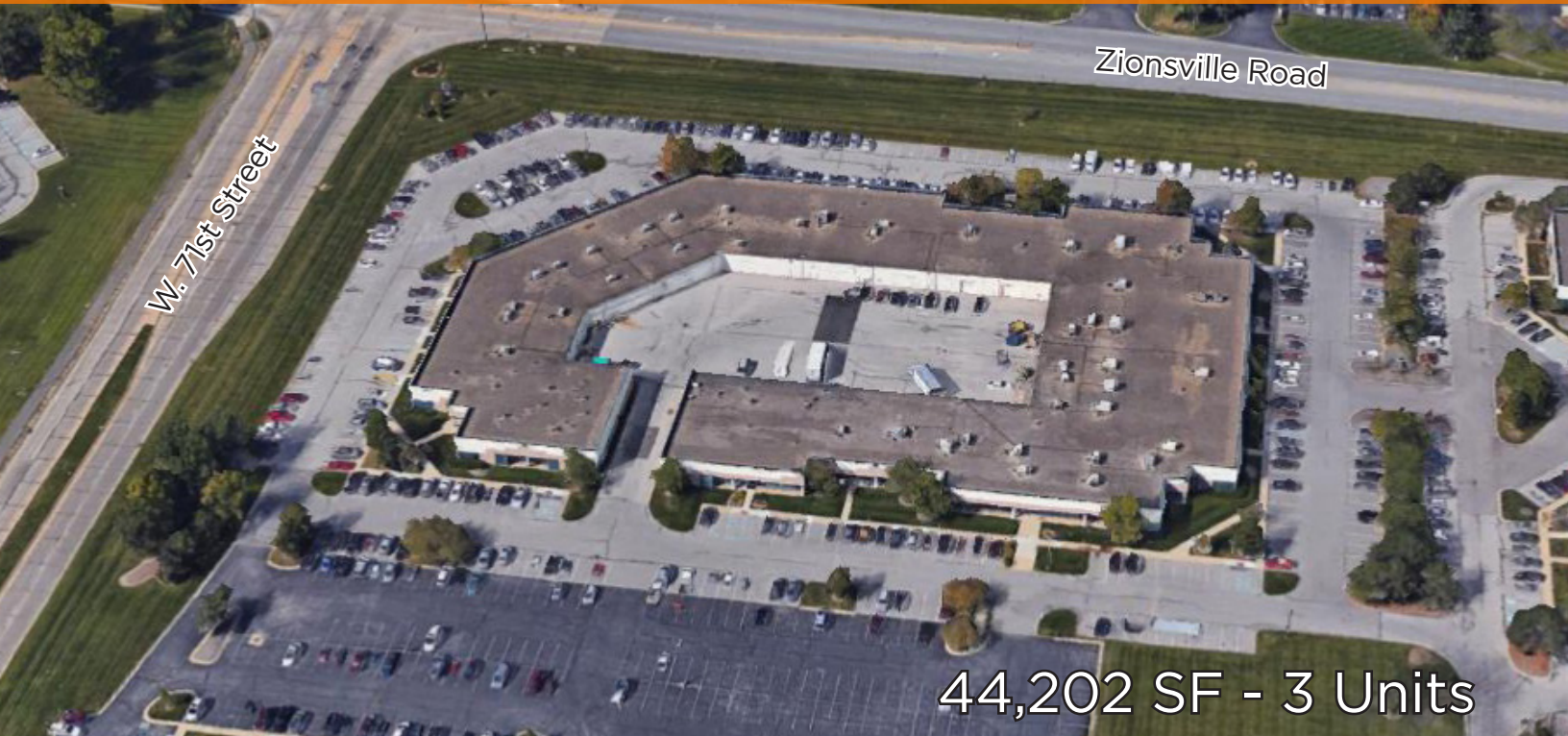




FOR LEASE

Park 100 | Building 111
7102-7196 Lakeview Parkway W. Drive
Indianapolis, Indiana








Zionsville Road

W. 71st Street

44,202 SF - 3 Units

Property Features

-  78,000 SF building size
-  7.91 acres total site size
-  12' clear height
-  Ample car parking
-  Zionsville Road/71st Street signage



Current Availabilities

Suite 7108 - 6,275 SF [VIRTUAL TOUR](#)

Suite 7172 - 12,255 SF [VIRTUAL TOUR](#)

Suite 7144-7160 - 25,672 SF

Owned By



Ed Beehner
Maple tree Investments
+1 312 761 9477
ed.beehner@mapletree.com.sg

Leased By



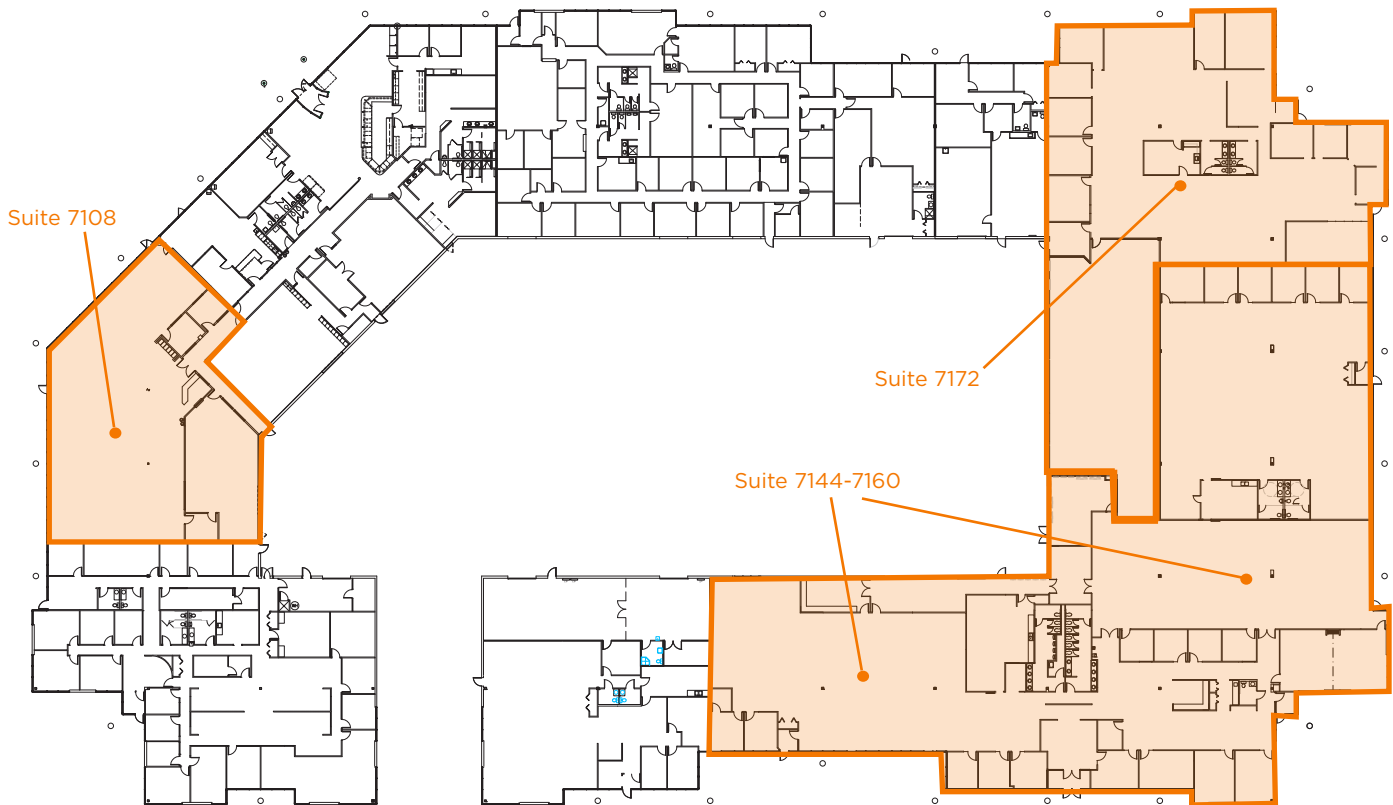
Kevin Archer
Director
+1 317 218 7217
kevin.archer@cushwake.com

Joshua Graham
Director
+1 317 639 0491
joshua.graham@cushwake.com

Jon R. Owens, SIOR
Managing Director
+1 317 639 0447
jon.owens@cushwake.com

7102-7195 LAKEVIEW PARKWAY W. DRIVE

SITE PLAN



Current Availabilities

Suite 7108

- >>> 6,275 SF available
- >>> 100% office

Suite 7172

- >>> 12,255 SF available
- >>> 3,932 SF warehouse
- >>> Air conditioned warehouse
- >>> 2 grade-level drive-in doors

Suite 7144-7160

- >>> 25,672 SF available (divisible)
- >>> 4 grade-level drive-in doors
- >>> Build-out can be removed to create more warehouse

Owned By

maple^{tree}

Ed Beehner
Mapletree Investments
+1 312 761 9477
ed.beehner@mapletree.com.sg

Leased By

CUSHMAN & WAKEFIELD

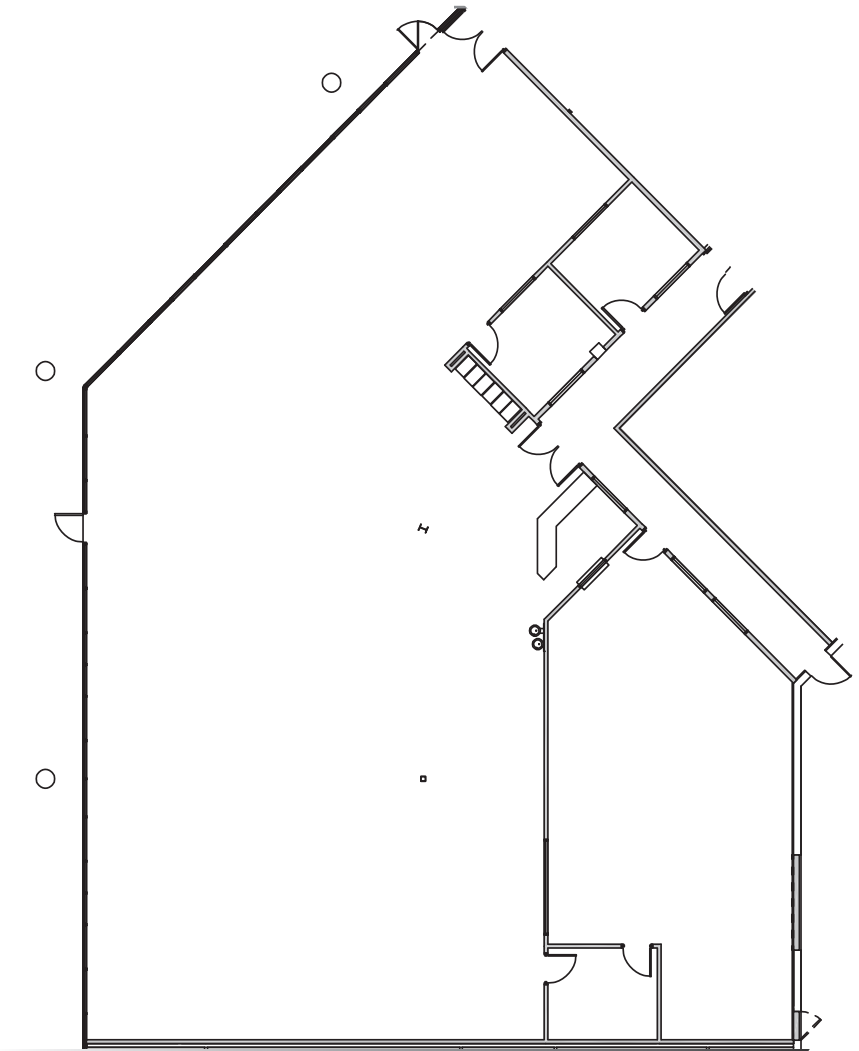
Kevin Archer
Director
+1 317 218 7217
kevin.archer@cushwake.com

Joshua Graham
Director
+1 317 639 0491
joshua.graham@cushwake.com

Jon R. Owens, SIOR
Managing Director
+1 317 639 0447
jon.owens@cushwake.com

7102-7195 LAKEVIEW PARKWAY W. DRIVE

SUITE 7108 - 6,275 SF



- >>> 6,275 SF available
- >>> 100% office
- >>> Open concept office
- >>> Modern open ceiling

Owned By

maple^{tree}

Ed Beehner
Mapletree Investments
+1 312 761 9477
ed.beehner@mapletree.com.sg

Leased By

CUSHMAN & WAKEFIELD

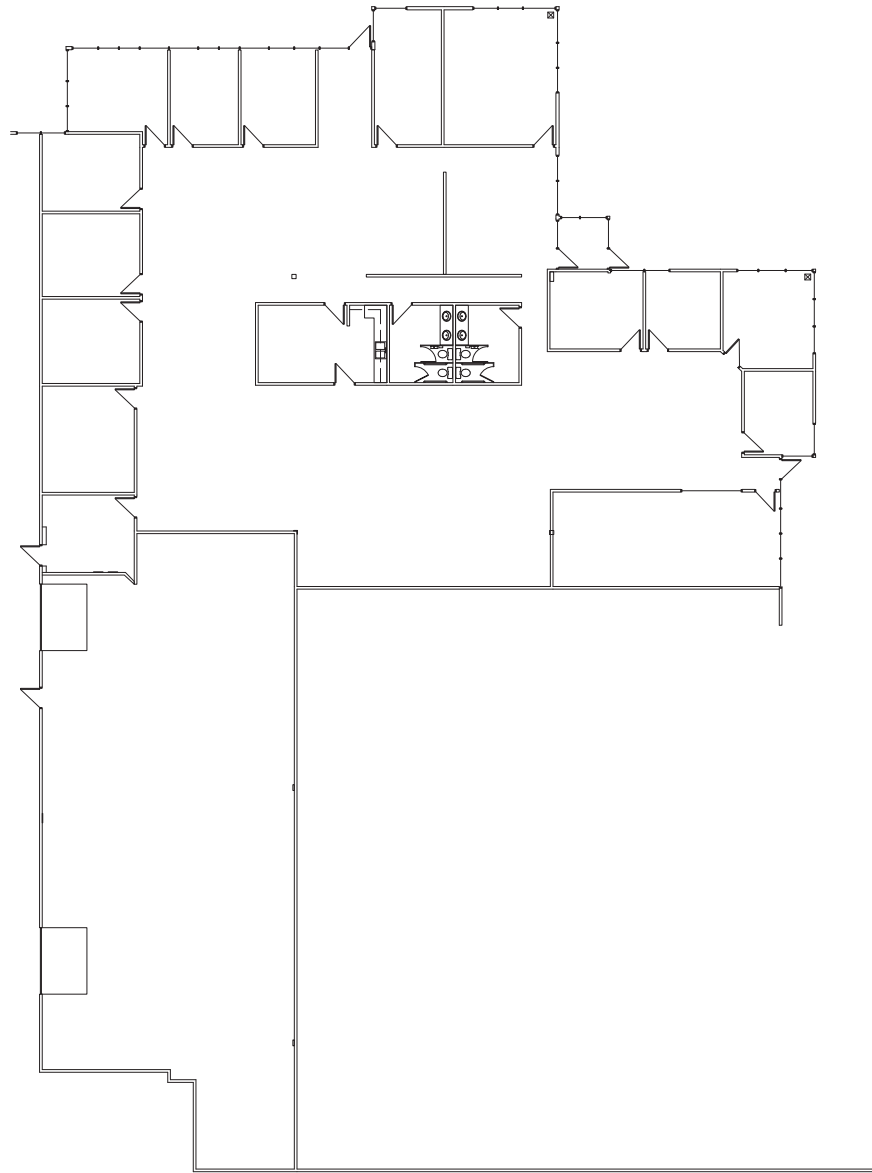
Kevin Archer
Director
+1 317 218 7217
kevin.archer@cushwake.com

Joshua Graham
Director
+1 317 639 0491
joshua.graham@cushwake.com

Jon R. Owens, SIOR
Managing Director
+1 317 639 0447
jon.owens@cushwake.com

7102-7195 LAKEVIEW PARKWAY W. DRIVE

SUITE 7172 - 12,255 SF



- >>> 12,255 SF available
- >>> 3,932 SF warehouse
- >>> 71st Street signage
- >>> Air conditioned warehouse
- >>> 2 grade-level drive-in doors (10' x 10')
- >>> 12' clear height

Owned By

maple^{tree}

Ed Beehner
Mapletree Investments
+1 312 761 9477
ed.beehner@mapletree.com.sg

Leased By

 **CUSHMAN & WAKEFIELD**

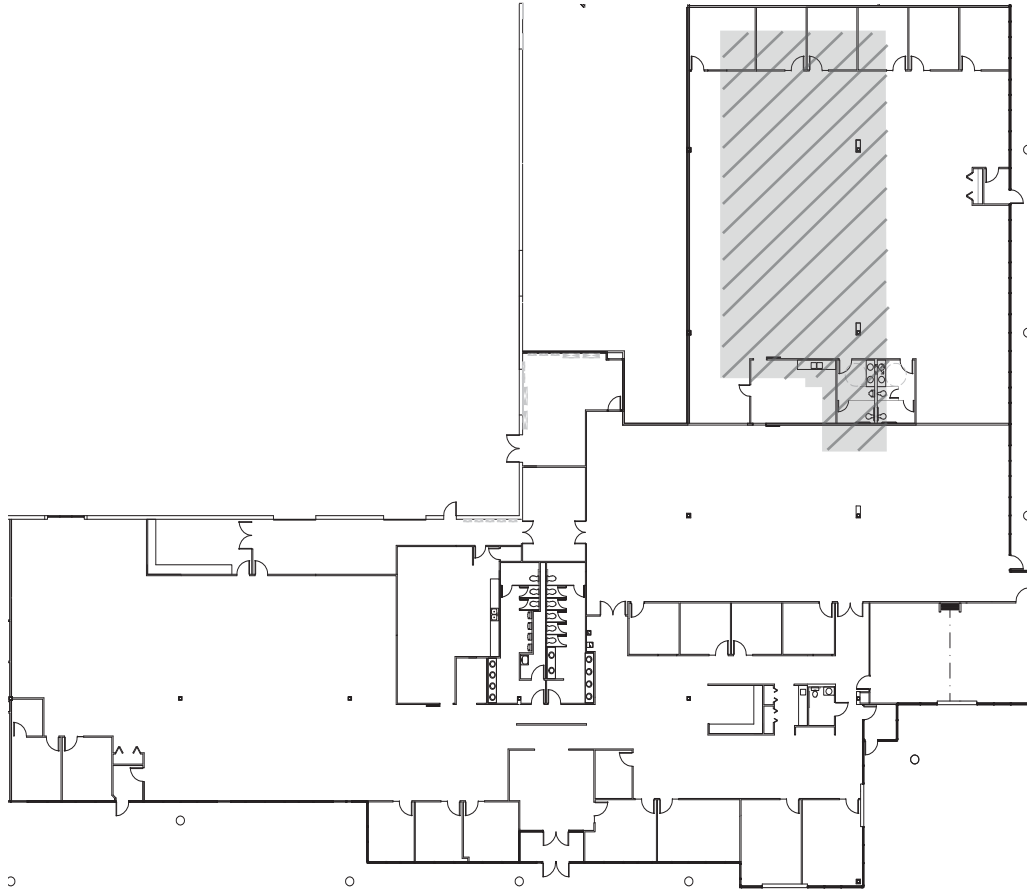
Kevin Archer
Director
+1 317 218 7217
kevin.archer@cushwake.com

Joshua Graham
Director
+1 317 639 0491
joshua.graham@cushwake.com

Jon R. Owens, SIOR
Managing Director
+1 317 639 0447
jon.owens@cushwake.com

7102-7195 LAKEVIEW PARKWAY W. DRIVE

SUITE 7144-7160 - 25,672 SF



- >>> 25,672 SF available
- >>> Divisible
- >>> Build-out can be removed to create more warehouse
- >>> Multiple drive-in doors

Owned By

mapletree

Ed Beehner
Mapletree Investments
+1 312 761 9477
ed.beehner@mapletree.com.sg

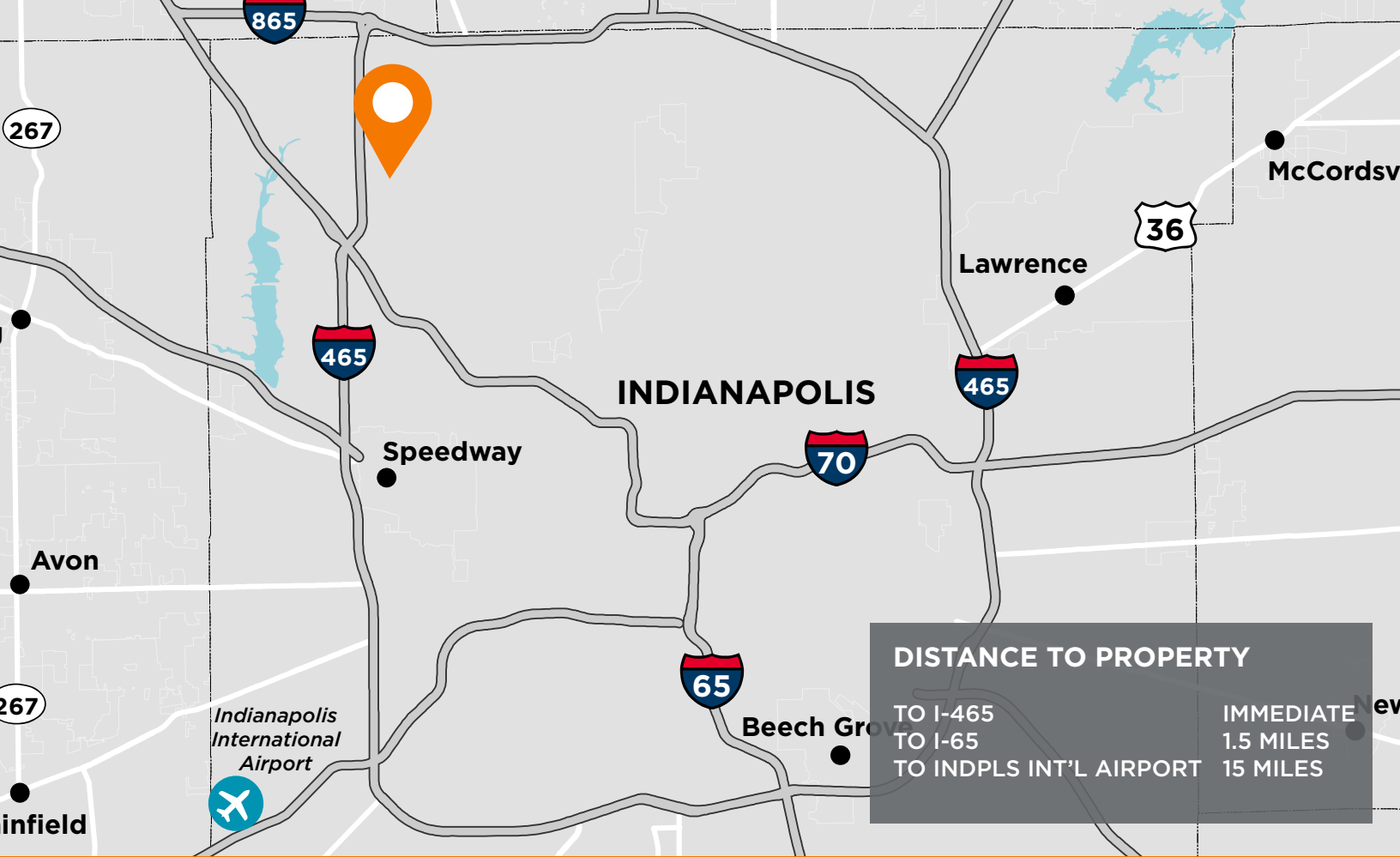
Leased By

 **CUSHMAN & WAKEFIELD**

Kevin Archer
Director
+1 317 218 7217
kevin.archer@cushwake.com

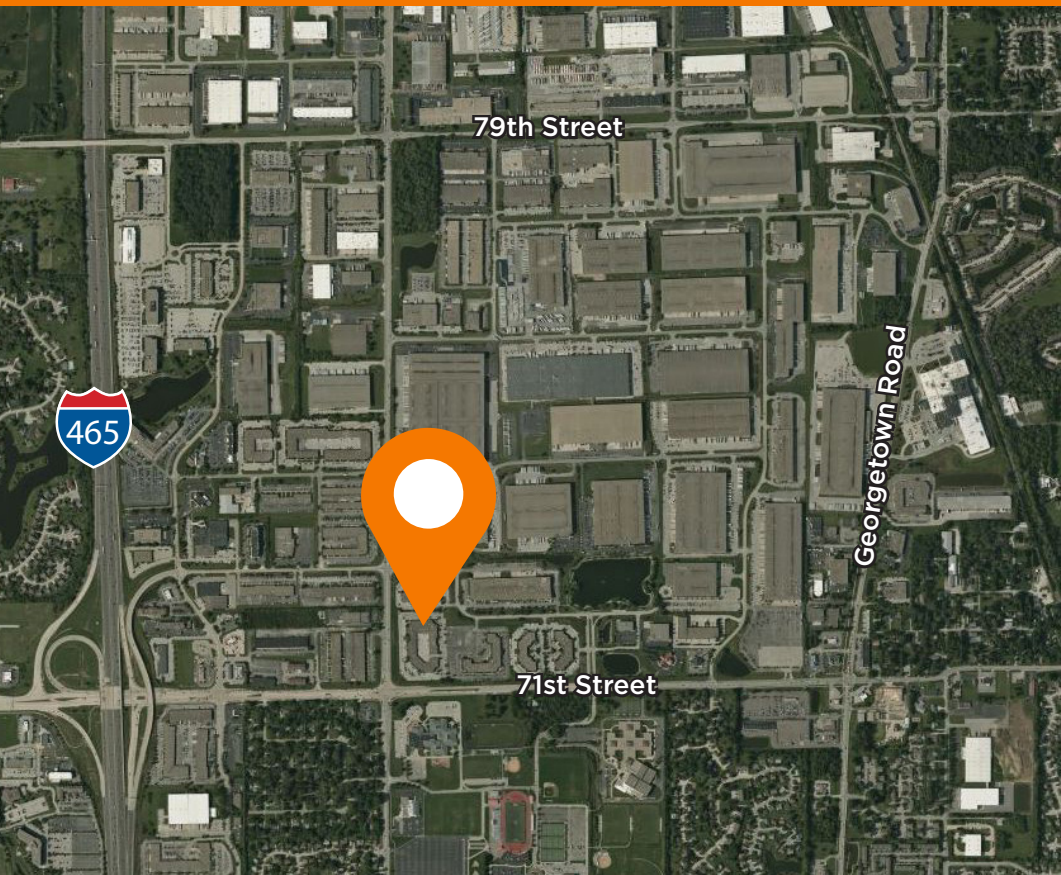
Joshua Graham
Director
+1 317 639 0491
joshua.graham@cushwake.com

Jon R. Owens, SIOR
Managing Director
+1 317 639 0447
jon.owens@cushwake.com



DISTANCE TO PROPERTY

TO I-465	IMMEDIATE
TO I-65	1.5 MILES
TO INDPLS INT'L AIRPORT	15 MILES



Strategic Location

Park 100 provides direct access to central Indiana's highways. Conveniently located on I-465 and minutes from I-65 and Indianapolis International Airport

About Us

Mapletree is a leading global real estate developer, investor and manager headquartered in Singapore. Mapletree owns and manages more than 42 million square feet of logistics and industrial properties across 26 states with offices in New York, Chicago, Atlanta, Dallas and Los Angeles.

www.mapletree.com.sg

Owned By



Ed Beehner
Mapletree Investments
+1 312 761 9477
ed.beehner@mapletree.com.sg

Leased By



Kevin Archer
Director
+1 317 218 7217
kevin.archer@cushwake.com

Joshua Graham
Director
+1 317 639 0491
joshua.graham@cushwake.com

Jon R. Owens, SIOR
Managing Director
+1 317 639 0447
jon.owens@cushwake.com