

San Mateo Office for Lease

1611, 1650 & 1777 Borel Place, San Mateo



Suites Available for Lease

As exclusive agents, we are pleased to offer the following space:

Building 1650

Suite 200: ±1,992 SF

Rental Rate: \$3.50/sf Full Service

Suite 209: ±1,242 SF

Rental Rate: \$3.50/sf Full Service

- ◆ Park-Like Setting
- ◆ Ample Parking
- ◆ Convenient Mid-Peninsula Location
- ◆ Flexible Deal Terms
- ◆ Close Proximity to Downtown Amenities
- ◆ Walking Distance to Borel Square Shopping Center
- ◆ Walking Distance to Hayward Park Caltrain Station

John Kraft Managing Director 650.358.5277 jkraft@newmarkccarey.com CA RE License #01787698

**Newmark
Knight Frank**

901 Mariners Island Boulevard, Suite 125, San Mateo, CA 94404

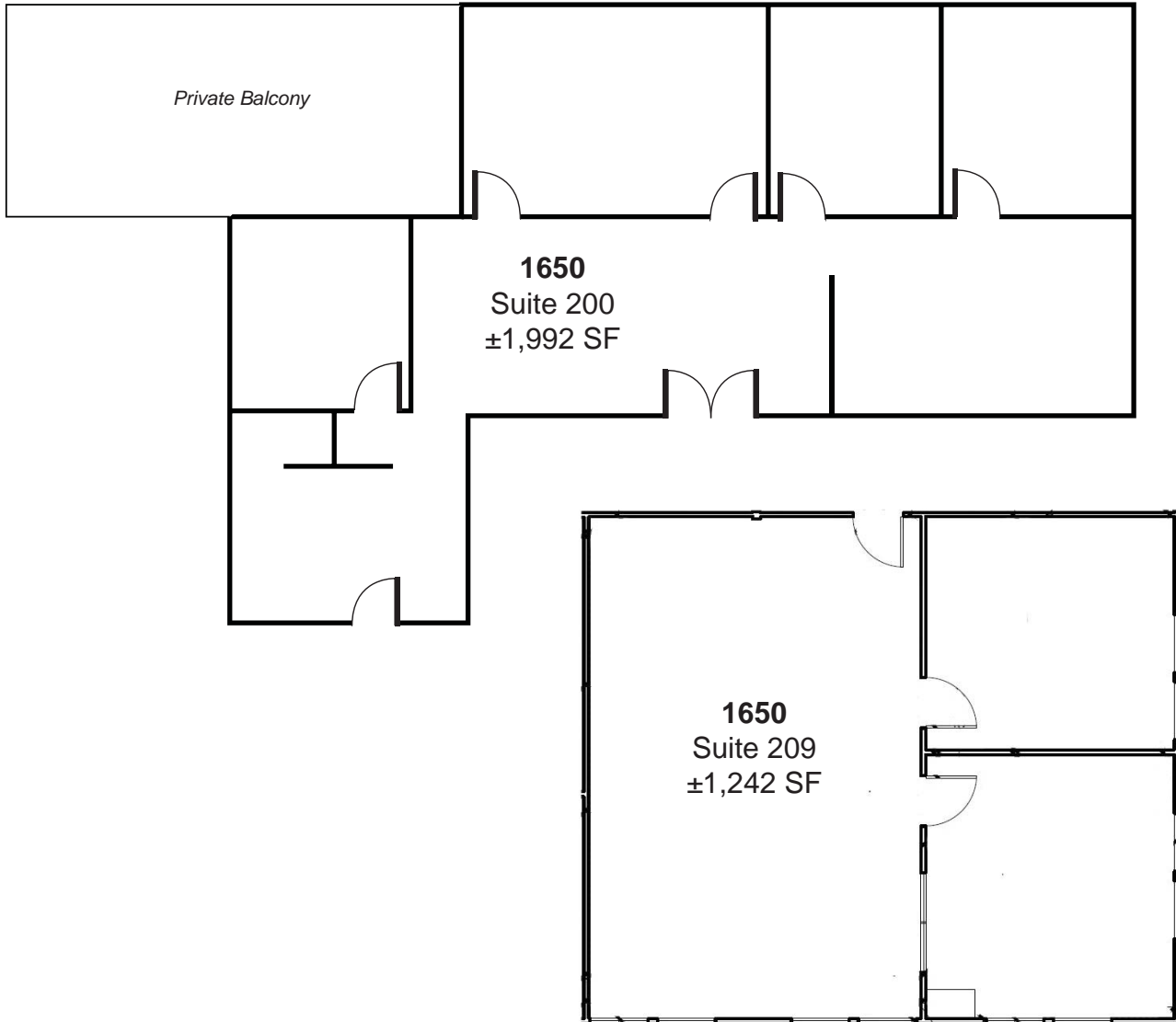
www.ngkf.com

Procuring broker shall only be entitled to a commission, calculated in accordance with the rates approved by our principal only if such procuring broker executes a brokerage agreement acceptable to us and our principal and the conditions as set forth in the brokerage agreement are fully and unconditionally satisfied. Although all information furnished regarding property for sale, rental, or financing is from sources deemed reliable, such information has not been verified and no express representation is made nor is any to be implied as to the accuracy thereof and it is submitted subject to errors, omissions, change of price, rental or other conditions, prior sale, lease or financing, or withdrawal without notice and to any special conditions imposed by our principal.

10-0549*04/18

San Mateo Office for Lease

1611, 1650 & 1777 Borel Place, San Mateo



John Kraft Managing Director 650.358.5277 jkraft@newmarkccarey.com CA RE License #01787698

**Newmark
Knight Frank**

901 Mariners Island Boulevard, Suite 125, San Mateo, CA 94404

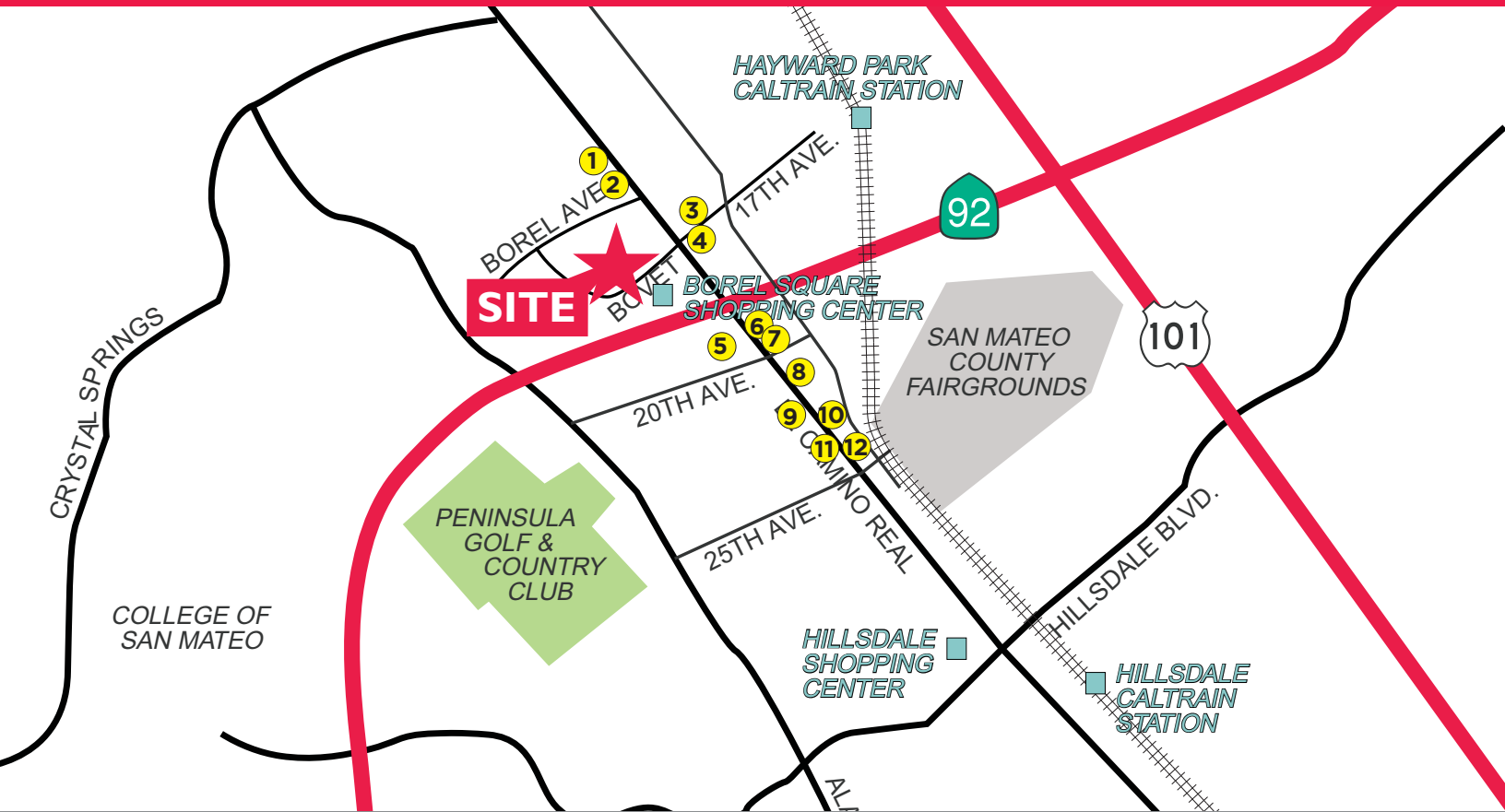
www.ngkf.com

Procuring broker shall only be entitled to a commission, calculated in accordance with the rates approved by our principal only if such procuring broker executes a brokerage agreement acceptable to us and our principal and the conditions as set forth in the brokerage agreement are fully and unconditionally satisfied. Although all information furnished regarding property for sale, rental, or financing is from sources deemed reliable, such information has not been verified and no express representation is made nor is any to be implied as to the accuracy thereof and it is submitted subject to errors, omissions, change of price, rental or other conditions, prior sale, lease or financing, or withdrawal without notice and to any special conditions imposed by our principal.

10-0549*04/18

San Mateo Office for Lease

1611, 1650 & 1777 Borel Place, San Mateo



Borel Square Shopping Center

24 Hour Fitness
Chase Bank
CVS Pharmacy
Esposito's Borel Deli
Jack's
Patelco Credit Union
Windy City Chicago Style Pizza

El Camino Real Amenities

1 - McDonald's	8 - Daiki Sushi
2 - All Spice	9 - Pop Pot Sichuan Seafood
3 - Safeway	10 - Mancora Cebicheria
4 - Starbucks	11 - Seniore's Pizza
5 - Santa Ramen	12 - Andes Cafe
6 - Heidi's Pies	
7 - Taco Bell	

25th Avenue Restaurants

Cobani Gyros and Kebabs
La Lanterna
Mama's Vietnamese
Patio Coffee Shop
San Mateo Coffee
Spicy Empire
Tannourine

John Kraft Managing Director 650.358.5277 jkraft@newmarkccarey.com CA RE License #01787698

**Newmark
Knight Frank**

901 Mariners Island Boulevard, Suite 125, San Mateo, CA 94404

www.ngkf.com

Procuring broker shall only be entitled to a commission, calculated in accordance with the rates approved by our principal only if such procuring broker executes a brokerage agreement acceptable to us and our principal and the conditions as set forth in the brokerage agreement are fully and unconditionally satisfied. Although all information furnished regarding property for sale, rental, or financing is from sources deemed reliable, such information has not been verified and no express representation is made nor is any to be implied as to the accuracy thereof and it is submitted subject to errors, omissions, change of price, rental or other conditions, prior sale, lease or financing, or withdrawal without notice and to any special conditions imposed by our principal.

10-0549-04/18