


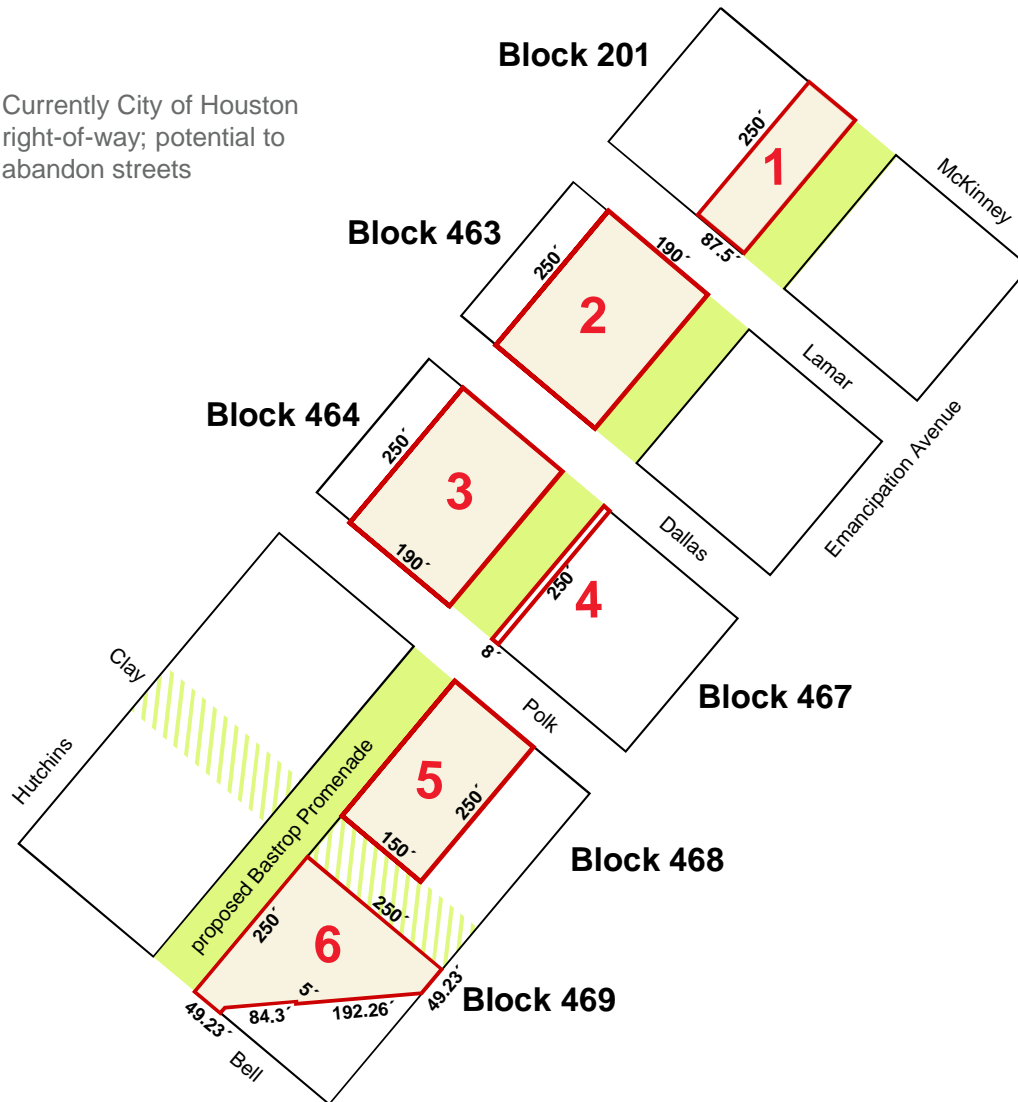
FOR INFORMATION





# ±4.5 Acres – Six Partial Blocks in EADO Near BBVA Compass Stadium

 Currently City of Houston right-of-way; potential to abandon streets

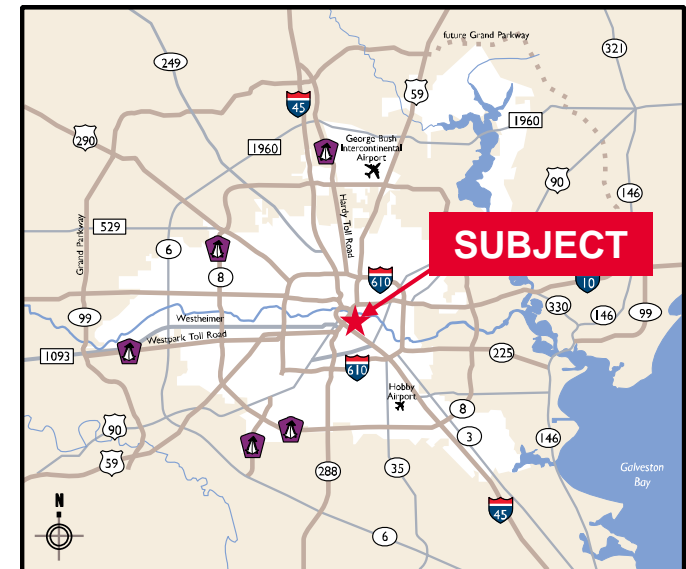


Located in the heart of East Downtown (EaDo) district. Within walking distance of Minute Maid Park, Discovery Green, The George R. Brown Convention Center, Toyota Center, and BBVA Compass Stadium

- Tract 1 - ±21,875 sq. ft. (±0.5022 acres)
- Tract 2 - ±47,500 sq. ft. (±1.0904 acres)
- Tract 3 - ±47,500 sq. ft. (±1.0904 acres)
- Tract 4 - ±2,000 sq. ft. (±0.0459 acres)
- Tract 5 - ±37,500 sq. ft. (±0.8609 acres)
- Tract 6 - ±40,450 sq. ft. (±0.9286 acres)

- Key Map 493R
- Cooperating brokers protected

**• Asking Price: \$90.00 per sq. ft.**



For more information, contact:

**Jeff G. Peden, SIOR**  
(713) 963 2880  
jeff.peden@cushwake.com

**David L. Cook, SIOR, CRE**  
(713) 963 2888  
david.cook@cushwake.com

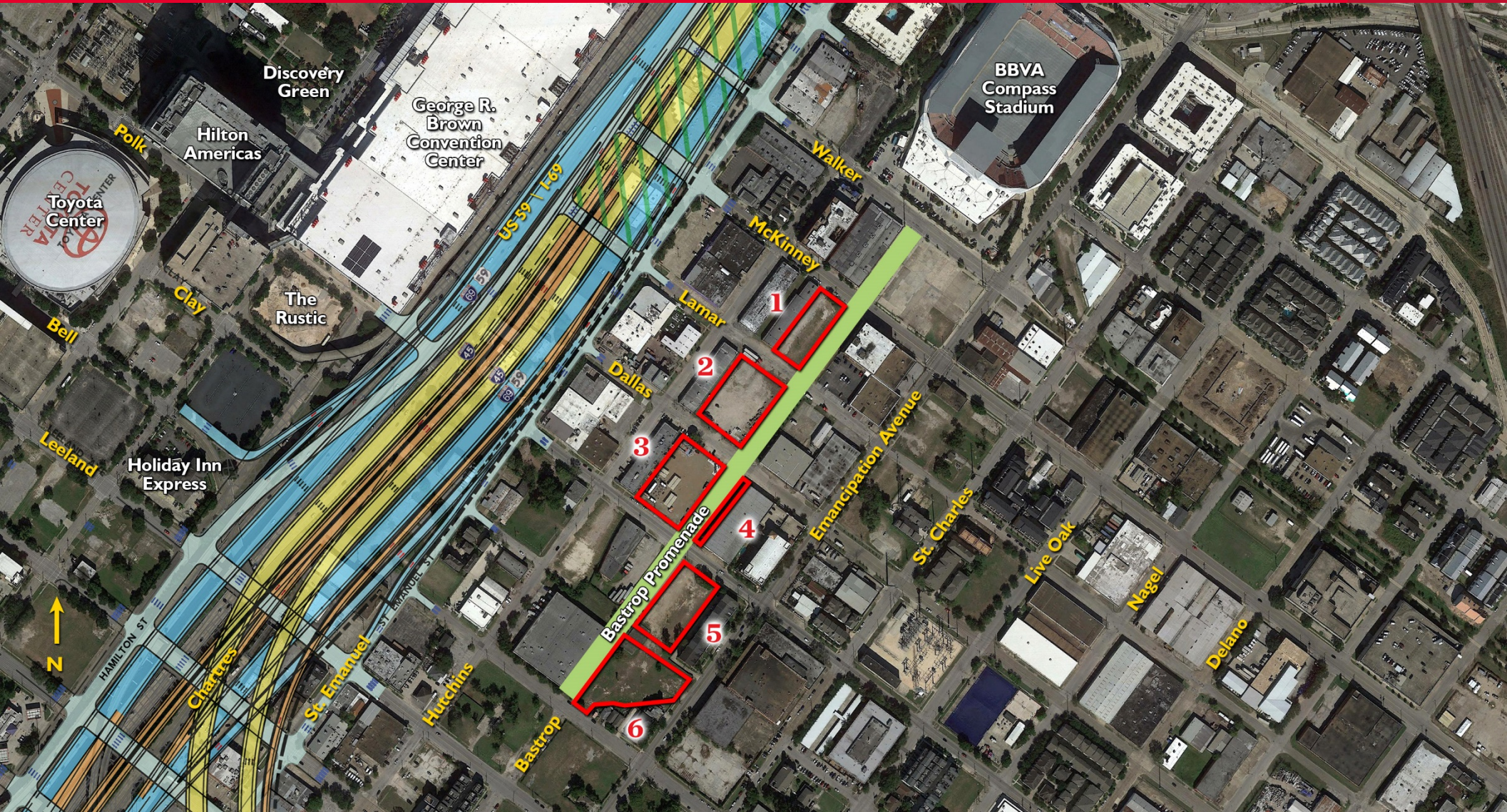
**Scott E. Miller**  
(713) 963 2835  
scott.miller@cushwake.com

**Cushman & Wakefield**  
Licensed Real Estate Brokers  
1330 Post Oak Boulevard | Suite 2700  
Houston, TX 77056  
www.cushmanwakefield.com





# ±4.5 Acres – Six Partial Blocks in EADO Near BBVA Compass Stadium



For more information, contact:

**Jeff G. Peden, SIOR**

(713) 963 2880

jeff.peden@cushwake.com

**David L. Cook, SIOR, CRE**

(713) 963 2888

david.cook@cushwake.com

**Scott E. Miller**

(713) 963 2835

scott.miller@cushwake.com

**Cushman & Wakefield**

Licensed Real Estate Brokers

1330 Post Oak Boulevard | Suite 2700

Houston, TX 77056

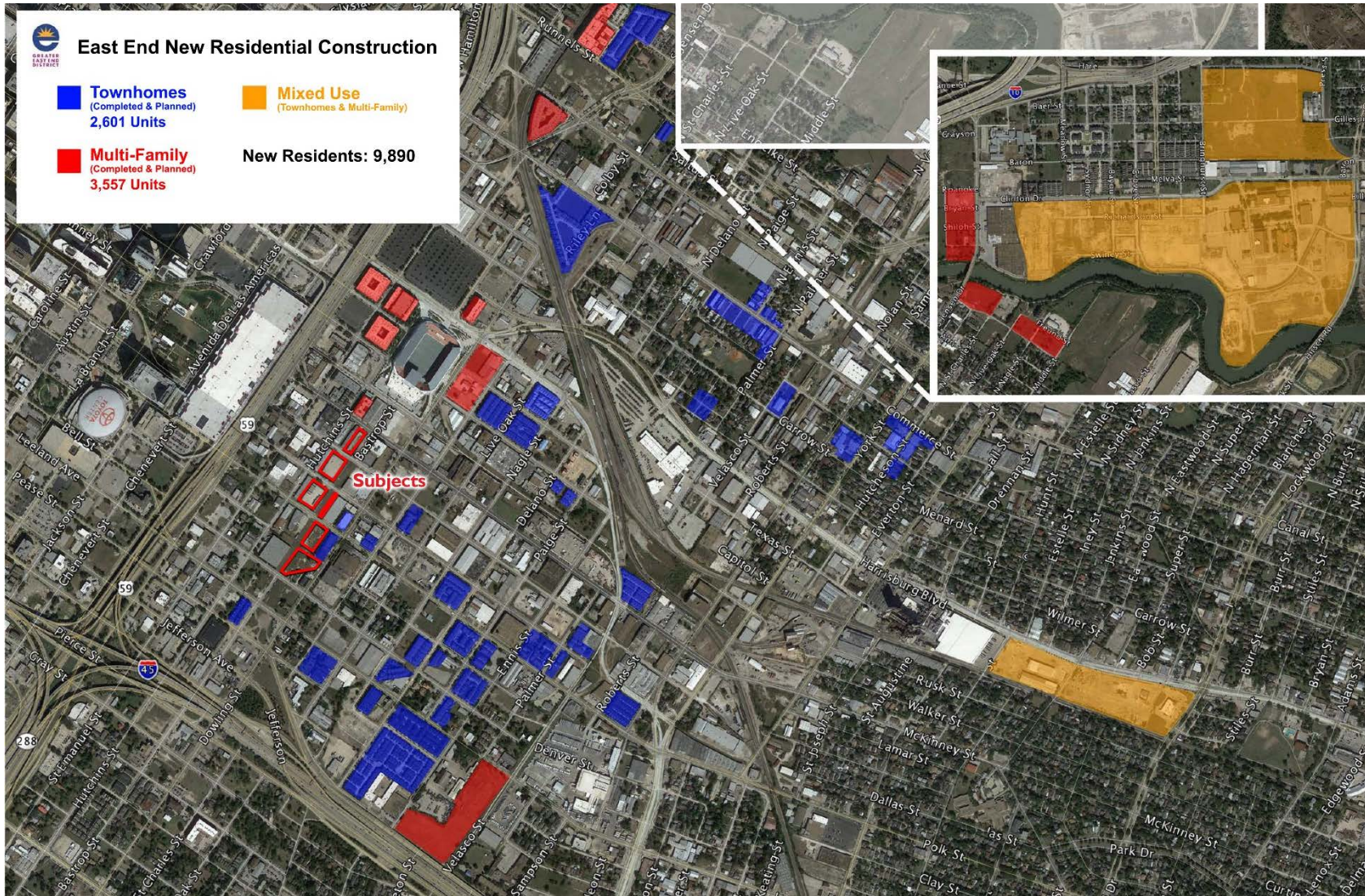
[www.cushmanwakefield.com](http://www.cushmanwakefield.com)

Cushman & Wakefield Copyright 2018. No warranty or representation, express or implied, is made to the accuracy or completeness of the information contained herein, and same is submitted subject to errors, omissions, change of price, rental or other conditions, withdrawal without notice, and to any special listing conditions imposed by the property owner(s). As applicable, we make no representation as to the condition of the property (or properties) in question.









For more information, contact:

**Jeff G. Peden, SIOR**  
(713) 963 2880

jeff.peden@cushwake.com

**David L. Cook, SIOR, CRE**  
(713) 963 2888

david.cook@cushwake.com

**Scott E. Miller**  
(713) 963 2835

scott.miller@cushwake.com

**Cushman & Wakefield**

Licensed Real Estate Brokers

1330 Post Oak Boulevard | Suite 2700

Houston, TX 77056

www.cushmanwakefield.com