

Gateway Corporate Center

12658 Interurban Ave S
Building 3
Tukwila, WA

6,250 SF total

4,816 SF office

Dock-high & grade-level doors

16' clear height

\$9,262 per month, NNN

Exposure to Interurban Ave S



Location



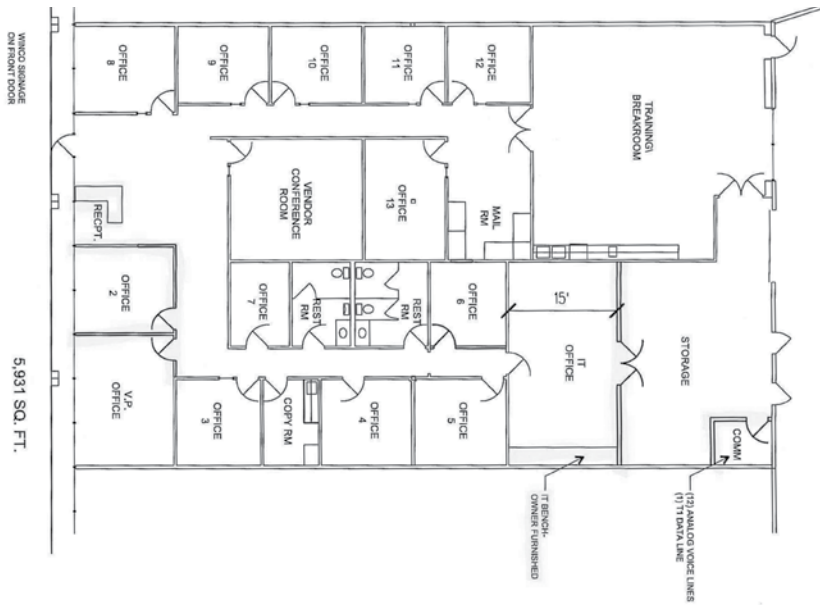
Contact

Richard Davidson

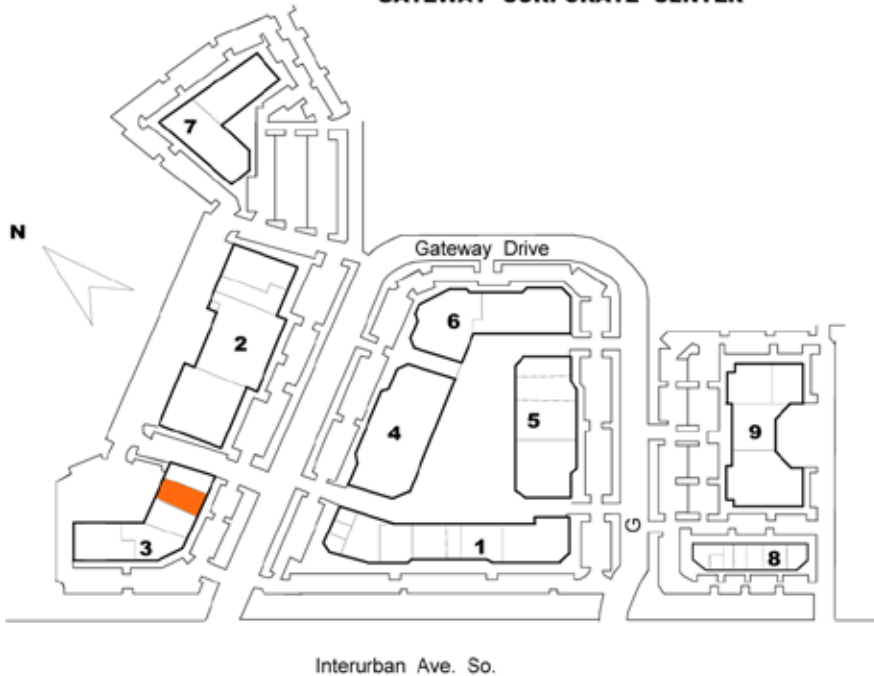
206.248.7314

richardd@kiddermathews.com

Gateway Corporate Center - Building 3



GATEWAY CORPORATE CENTER



Contact

Richard Davidson
 206.248.7314
 richardd@kiddermathews.com