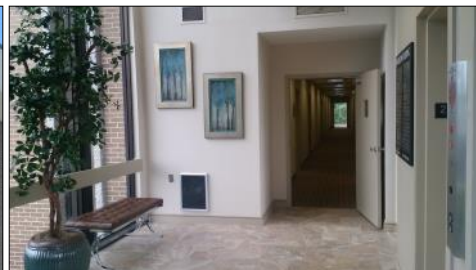


OFFICE SUITES FOR LEASE

HOOVER / LOCATED BETWEEN I-65 & I-459 / NEAR VESTAVIA HILLS



BY APPOINTMENT ONLY



3100 Lorna Rd-Birmingham, AL 35216

- The **Barbizon Building** is a three-story BLDG that's located in the heart of Hoover with direct access off Highway 31. The **Barbizon Building** is centrally located between I-459 and I-65. Minutes from Vestavia Hills, Homewood and Pelham. Includes extras such as shared conference room and breakroom.
- Ground level access to both First and Second floors. Elevator access on the north and south side of the **Barbizon Building** that accesses all three floors.
- High speed internet access available—Onsite property management
- *Newly remodeled building that includes new entrances, additional landscaping, as well as lobby and common area upgrades—Plenty of parking*

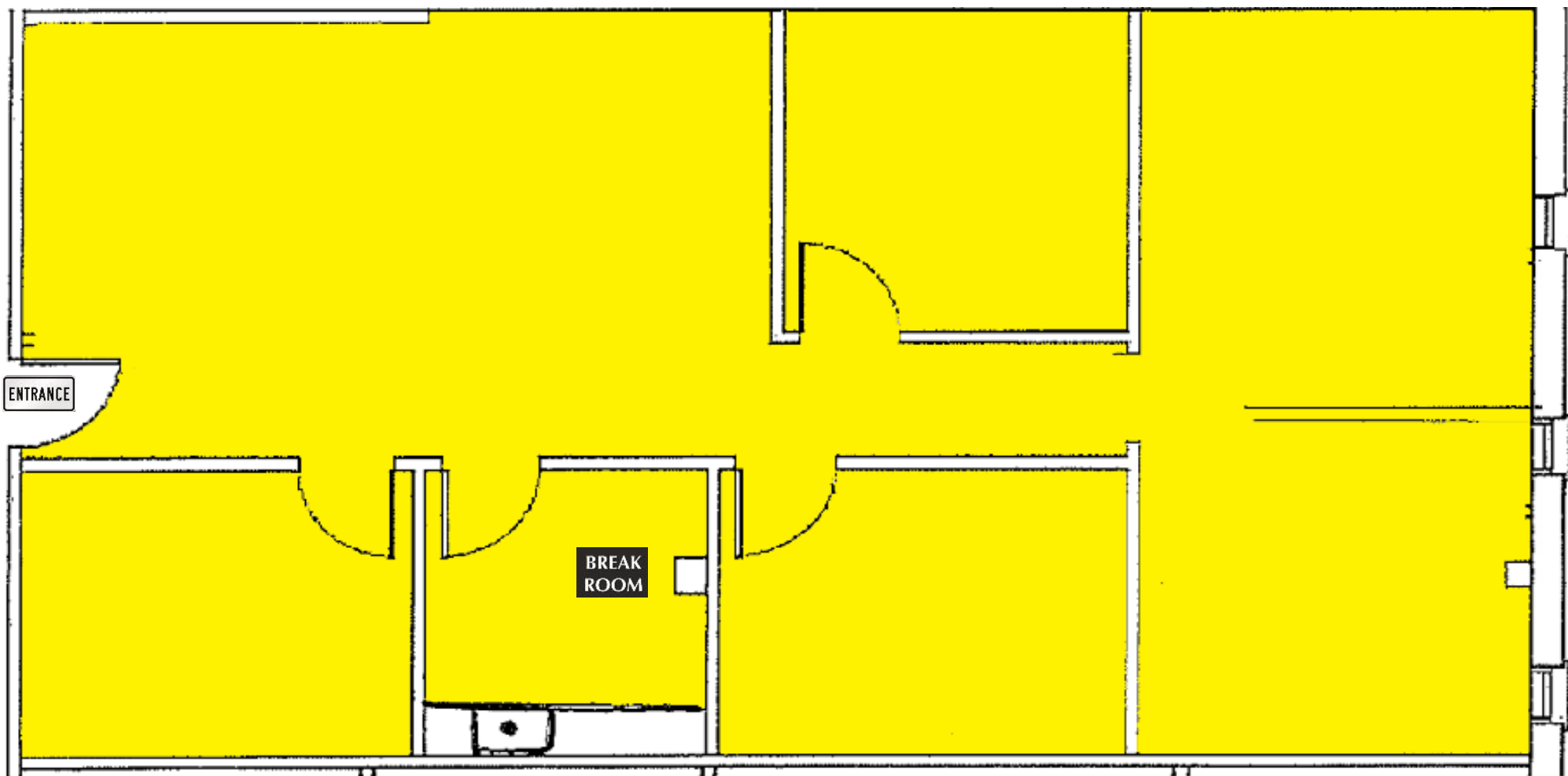
Prices include janitorial and utilities excludes inet/telco

- **Suite 201** is approx. 1,424± SF and leases for \$1,899/mo
- **Suite 203** is approx. 2,318± SF and leases for \$3091/mo
- **Suite 204** is approx. 660± SF and leases for \$880/mo
- **Suite 212** is approx. 675± SF and leases for \$900/mo
- **Suite 302** is approx. 1,195± SF and leases for \$1594/mo
- **Suite 304** is approx. 2,330± SF and leases for \$3,107/mo
- **Suite 306** is approx. 324± SF and leases for \$446/mo

OFFICE SUITES FOR LEASE

HOOVER / LOCATED BETWEEN I-65 & I-459 / NEAR VESTAVIA HILLS

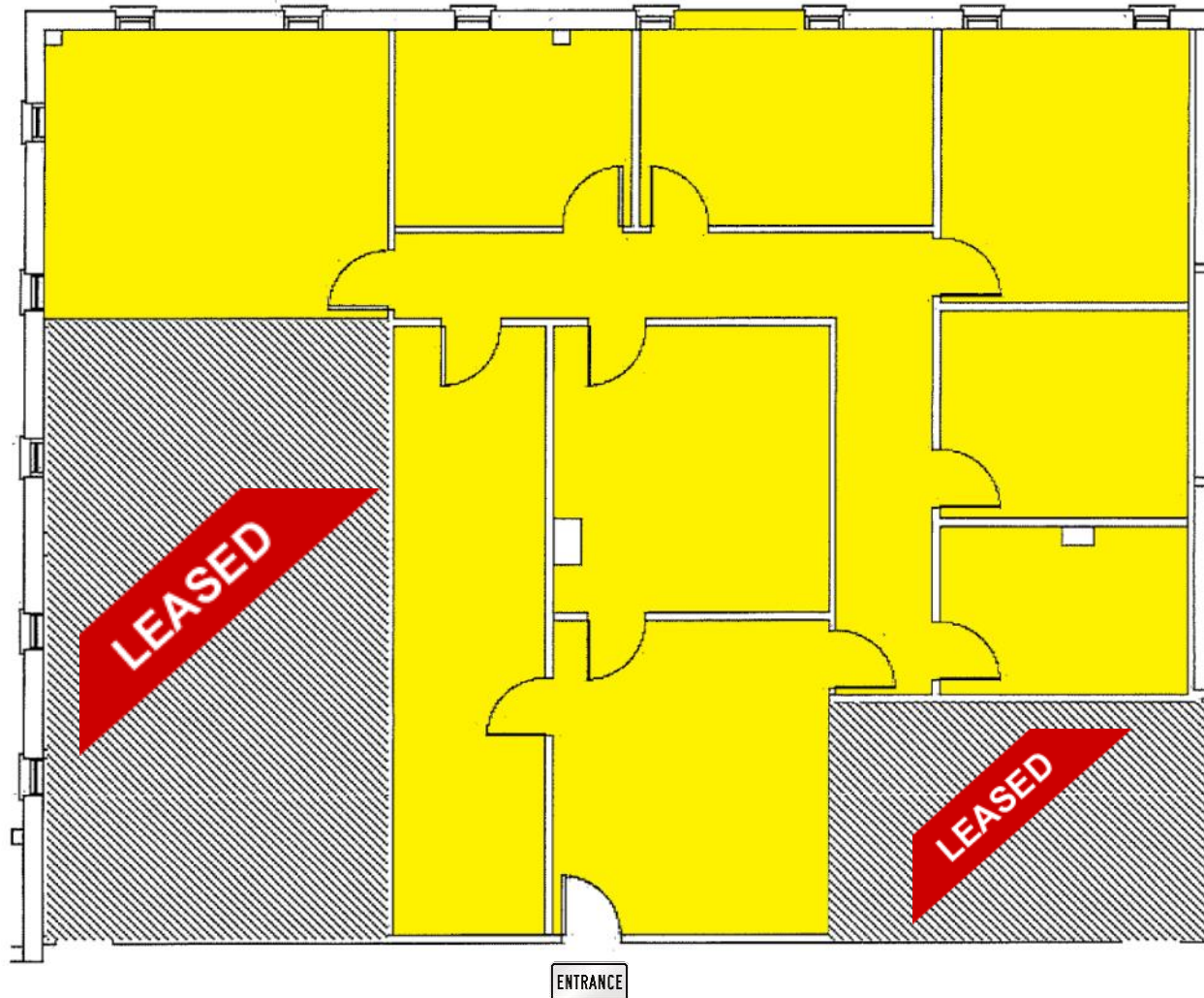
Suite 201 is approx. 1,424± SF



OFFICE SUITES FOR LEASE

HOOVER / LOCATED BETWEEN I-65 & I-459 / NEAR VESTAVIA HILLS

Suite 203 is approx. 2,318± SF

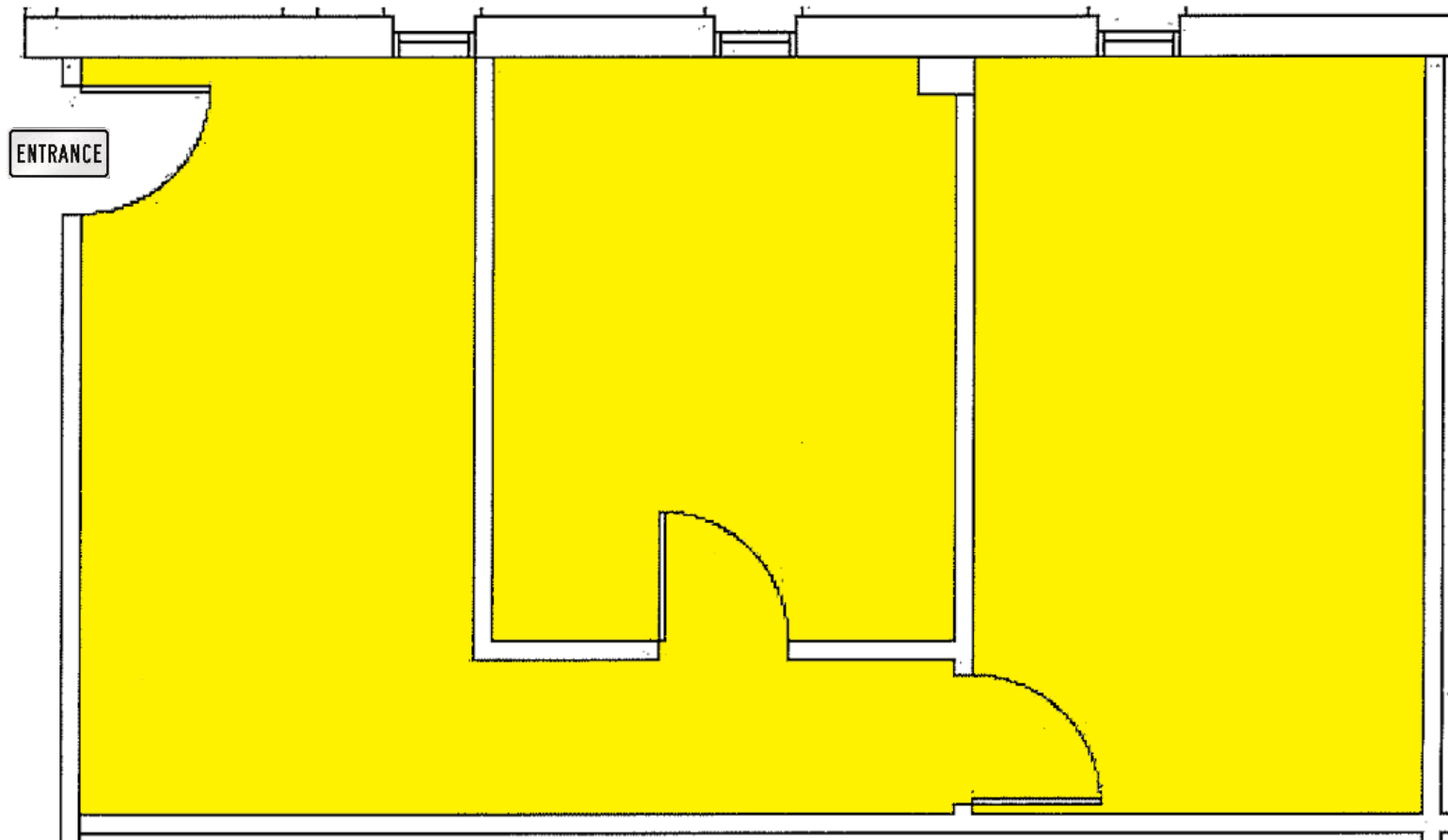




OFFICE SUITES FOR LEASE

HOOVER / LOCATED BETWEEN I-65 & I-459 / NEAR VESTAVIA HILLS

Suite 204 is approx. 660± SF

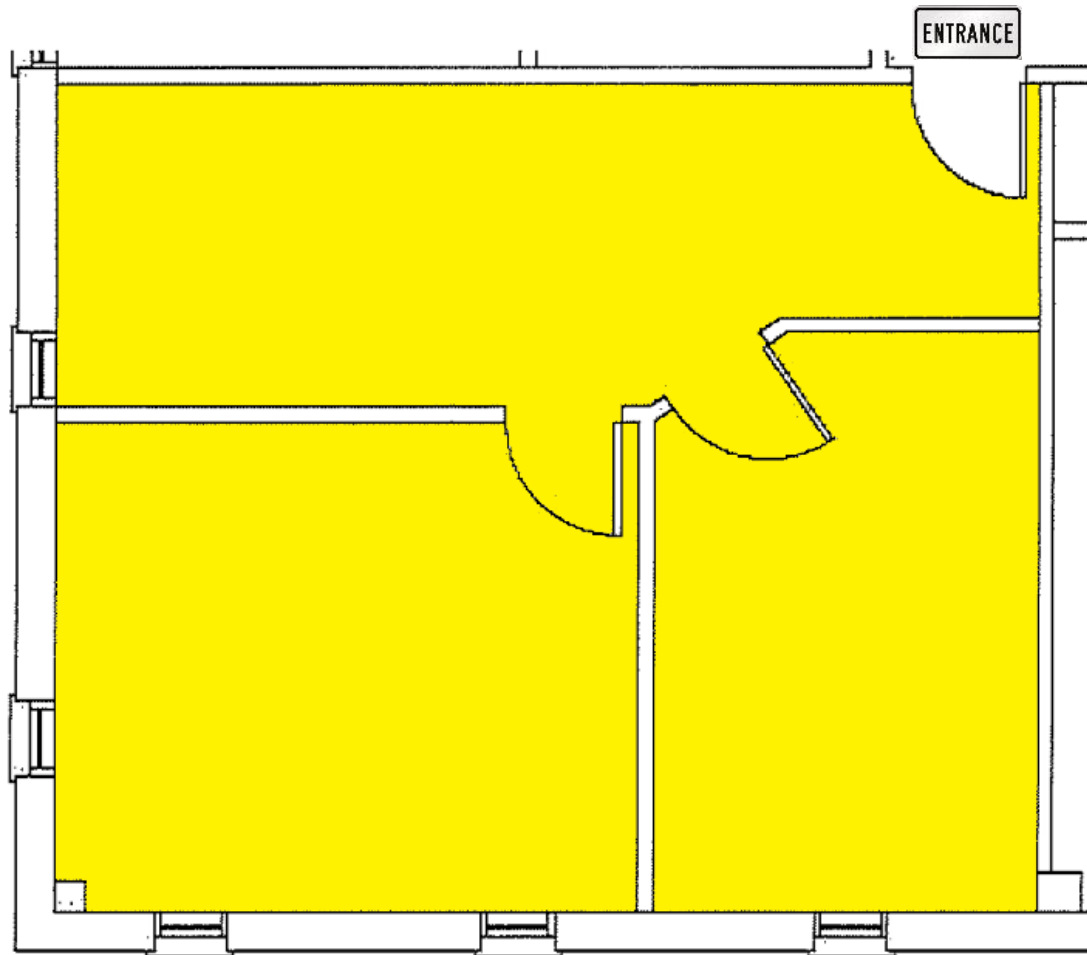




OFFICE SUITES FOR LEASE

HOOVER / LOCATED BETWEEN I-65 & I-459 / NEAR VESTAVIA HILLS

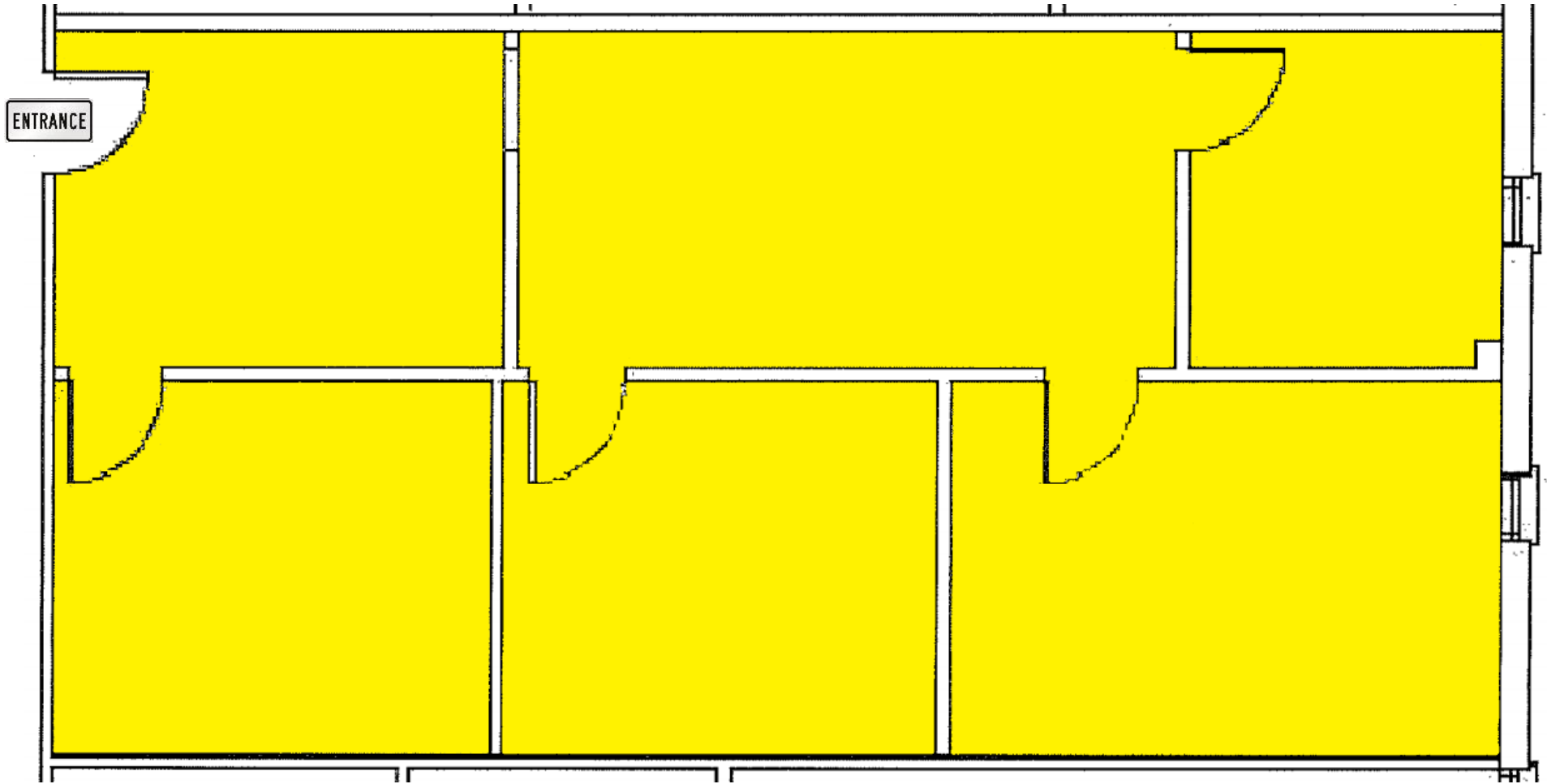
Suite 212 is approx. 675± SF



OFFICE SUITES FOR LEASE

HOOVER / LOCATED BETWEEN I-65 & I-459 / NEAR VESTAVIA HILLS

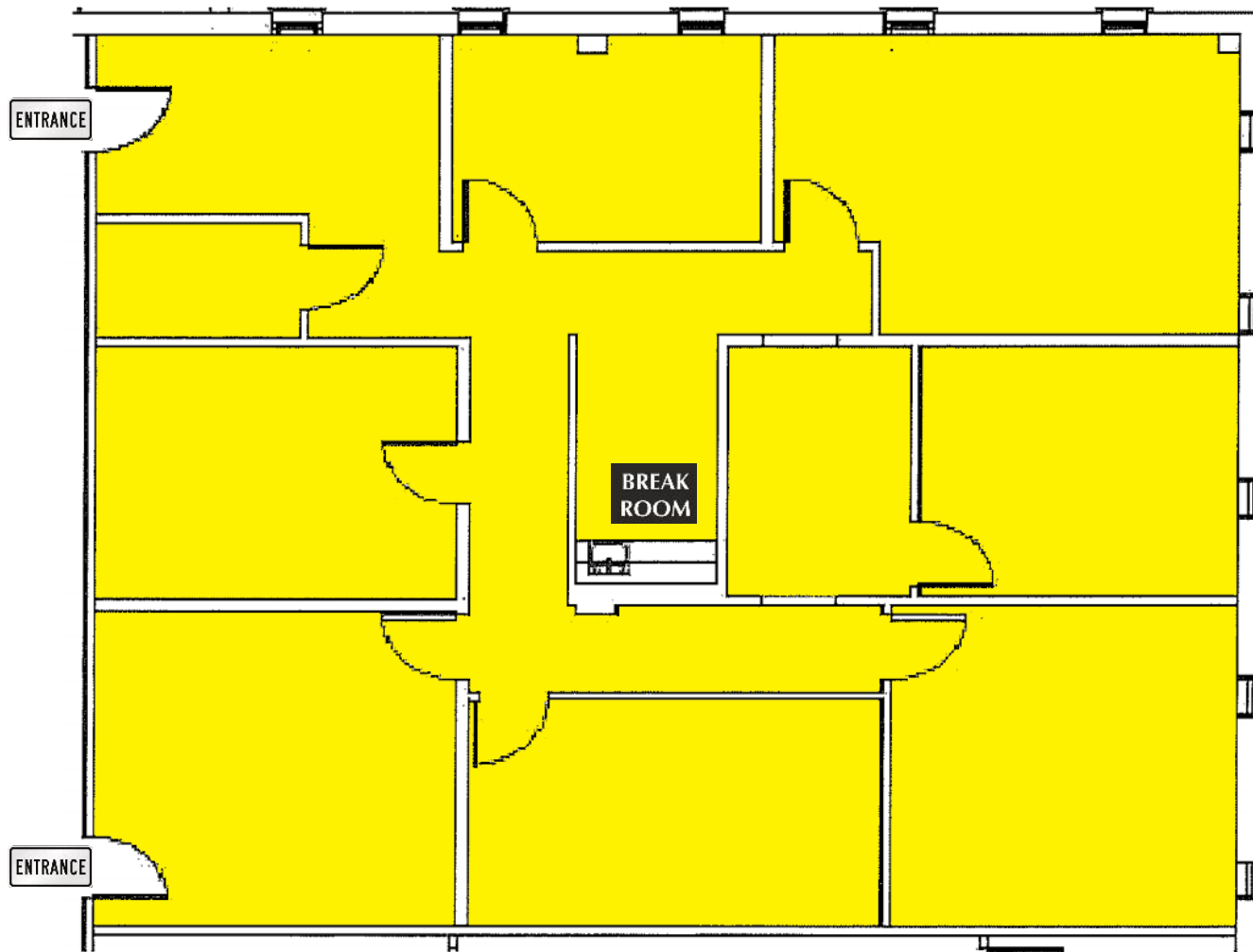
Suite 302 is approx. 1,195± SF



OFFICE SUITES FOR LEASE

HOOVER / LOCATED BETWEEN I-65 & I-459 / NEAR VESTAVIA HILLS

Suite 304 is approx. 2,330± SF

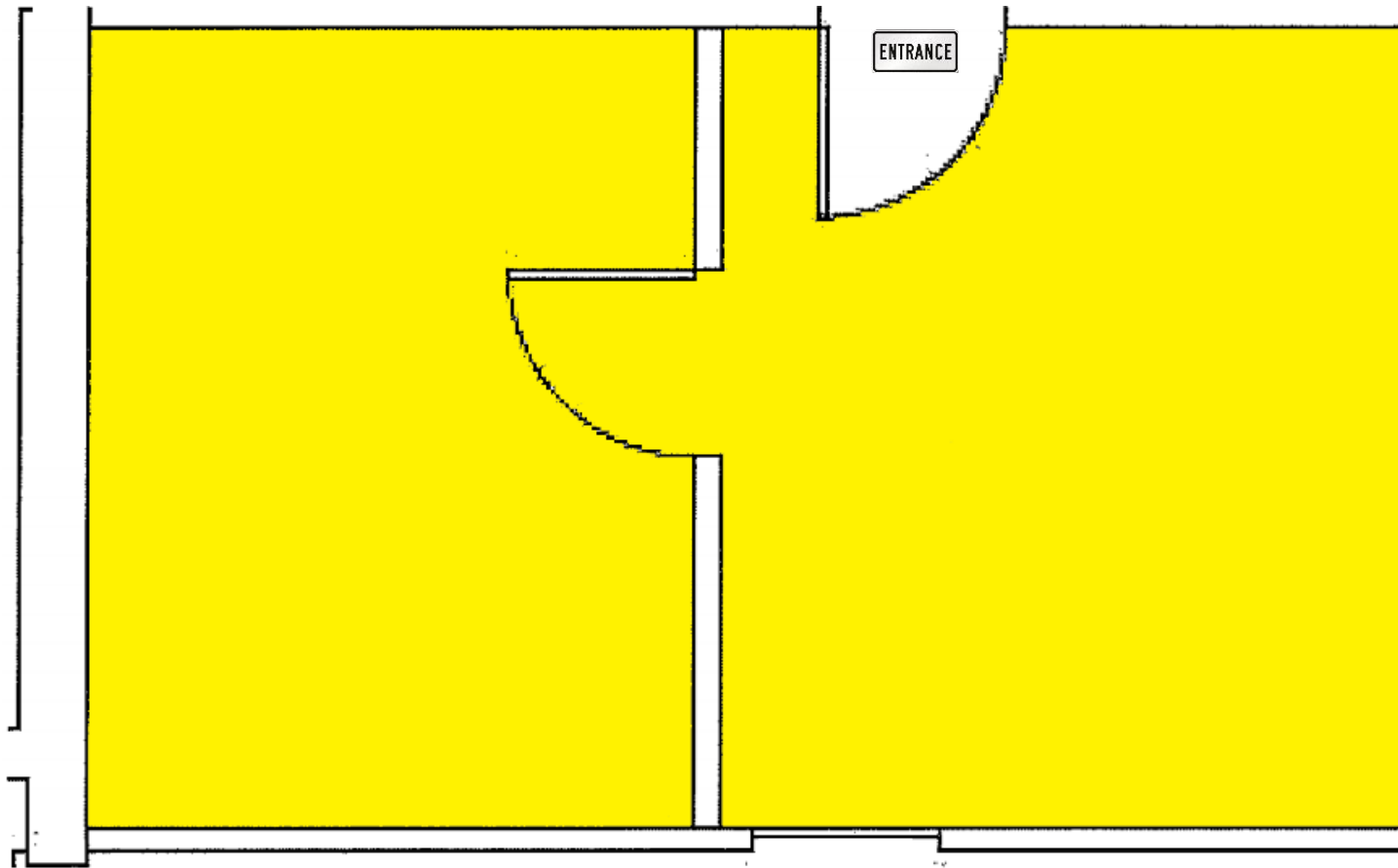




OFFICE SUITES FOR LEASE

HOOVER / LOCATED BETWEEN I-65 & I-459 / NEAR VESTAVIA HILLS

Suite 306 is approx. 324± SF



OFFICE SUITES FOR LEASE

HOOVER / LOCATED BETWEEN I-65 & I-459 / NEAR VESTAVIA HILLS



31 Highway 31 31



Lorna Rd

OFFICE SUITES FOR LEASE

HOOVER / LOCATED BETWEEN I-65 & I-459 / NEAR VESTAVIA HILLS



- The **Barbizon Building** is a three-story BLDG that's located in the heart of Hoover with direct access off Highway 31. The **Barbizon Building** is centrally located between I-459 and I-65. Minutes from Vestavia Hills, Homewood and Pelham. Includes extras such as shared conference room and breakroom.
- Ground level access to both First and Second floors. Elevator access on the north and south side of the **Barbizon Building** that accesses all three floors.
- *Newly remodeled building that includes new entrances, additional landscaping, as well as lobby and common area upgrades—Plenty of parking*

