



3400 28th Street

Metairie, Louisiana 70002

Property Highlights

- Development opportunity on the corner of N. Hullen and 28th Streets in Metairie
- Site is ±0.264 acres and consists of two vacant adjacent lots for sale
- BC-2 zoning permits a wide variety of new construction types, including retail or office space
- Conveniently located with easy access to I-10, Causeway Blvd., and Veterans Memorial Blvd.
- Close proximity to many businesses in the area, including Whole Foods, Lowe's, and several high profile shopping centers

Sale Price

\$390,000



For more information

Betty Pei Ching Sun

O: 504 569 9482 | C: 985 709 7228
Betty@LatterBlum.com

Stephanie Koontz

O: 504 525 1311 | C: 610 248 0690
skoontz@latterblum.com

CALL OR EMAIL FOR MORE INFORMATION

NO WARRANTY OR REPRESENTATION, EXPRESS OR IMPLIED, IS MADE AS TO THE ACCURACY OF THE INFORMATION CONTAINED HEREIN, AND THE SAME IS SUBMITTED SUBJECT TO ERRORS, OMISSIONS, CHANGE OF PRICE, RENTAL OR OTHER CONDITIONS, PRIOR SALE, LEASE OR FINANCING, OR WITHDRAWAL WITHOUT NOTICE, AND OF ANY SPECIAL LISTING CONDITIONS IMPOSED BY OUR PRINCIPALS NO WARRANTIES OR REPRESENTATIONS ARE MADE AS TO THE CONDITION OF THE PROPERTY OR ANY HAZARDS CONTAINED THEREIN ARE ANY TO BE IMPLIED. LICENSED IN LOUISIANA.

430 Notre Dame Street
New Orleans, LA 70130
504 525 1311 tel
latterblum.com



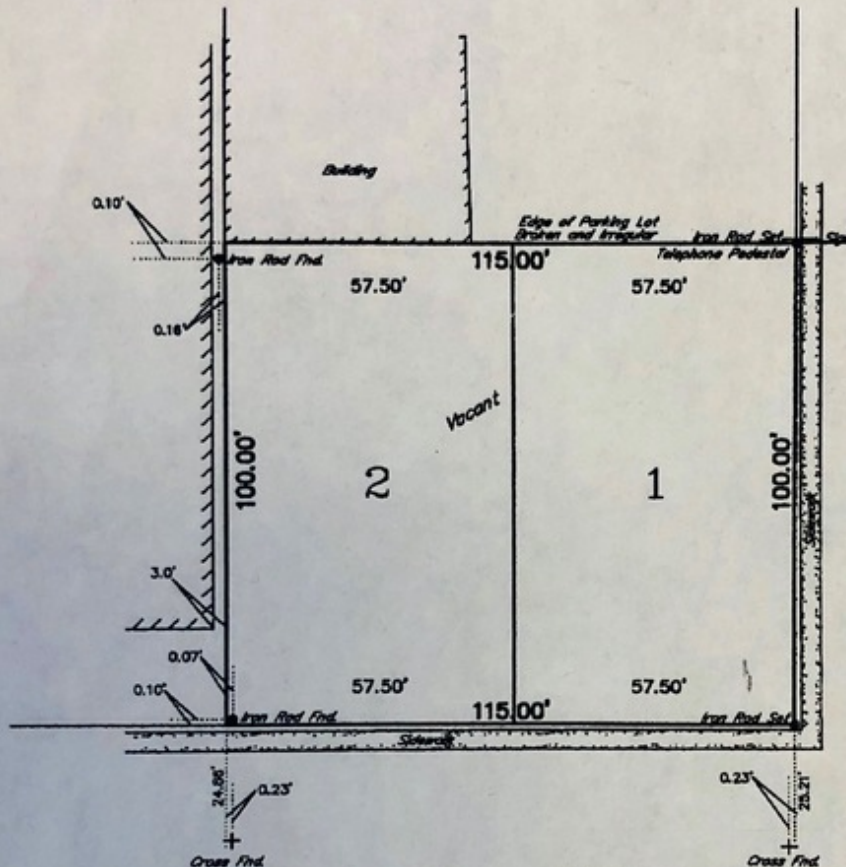
LOTS 1 & 2, SQUARE 57-A,
SHREWSBURY SUBDIVISION,
JEFFERSON PARISH, LOUISIANA



SEVERN AVENUE (Side)

INTERSTATE HIGHWAY 10 (Side)

28TH STREET



HULLEN STREET

NOTE: IMPROVEMENTS MAY NOT BE TO SCALE FOR CLARITY.
THE DIMENSIONS SHOWN PREVAIL OVER SCALE.

NOTE: ALL LOT ANGLES ARE 90°

"CERTIFIED CORRECT TO:
FIRST AMERICAN TITLE INSURANCE COMPANY"

There is no representation that all applicable servitudes and/or restrictions have been shown hereon. Any servitudes and/or restrictions shown on this plat are limited to those set forth in the description and/or information furnished the undersigned. A title or public record search has been made and such information was not made by the undersigned in compiling the data for this survey.

LANDMARK SURVEYING, INC.

1513 Kuebel Street
Harahan, Louisiana 70123

Fax: 504-734-8387

Phone: 504-733-3303

© Copyright

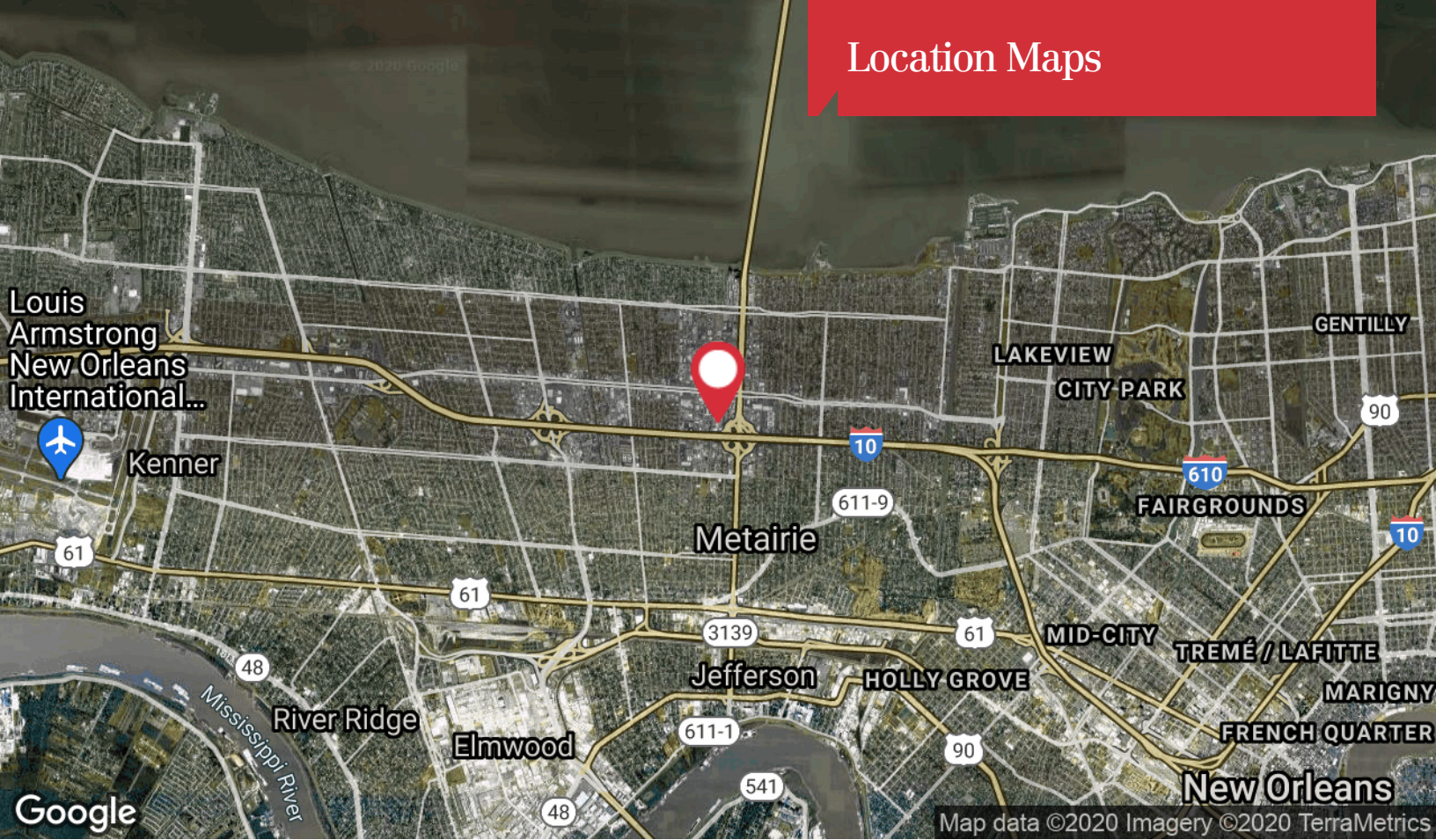
Date: 10/8/08
Scale: 1"=30'

Job No: 08-0243

PROFESSIONAL LAND SURVEYOR

Plat File No: 080243

Location Maps



430 Notre Dame Street
 New Orleans, LA 70130
 504 525 1311 tel
latterblum.com