



Entrada Executive Plaza 1423 S Higley Rd, Bldg 9

Mesa, AZ 85206 | Office Condos For Sale

\$875,314 Multi-Tenant & Fully Leased Property – 7.5% CAP



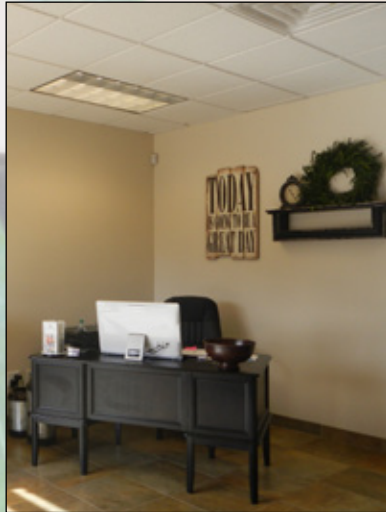
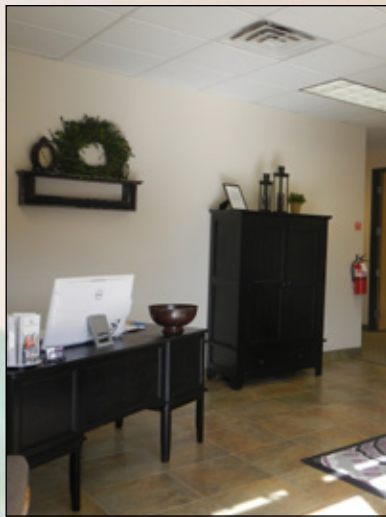
Features

- ± 5,000 SF Condo (Suite 121 & 122)
- Built in November, 2000
- Total Build Out Currently Includes: Reception, 6 Offices, Conference Room, Bull Pen, Break Room and Restrooms
- Great Visibility / Higley Rd Frontage
- Building Signage Available
- Parcel No. 141-53-523
- C-2 Zoning, City of Mesa
- Direct Access to US-60 Freeway
- Close to Banner Gateway Medical Center, Retail Amenities and Restaurants

Aashish Parekh
480.221.8076 (M)
aparekh@cpi.az.com



TEMPE: 2323 W. University Drive, Tempe, AZ 85281 | 480.966.2301
SCOTTSDALE: 7025 N. Scottsdale Rd., Suite 220, Scottsdale, AZ 85253 | www.cpi.az.com



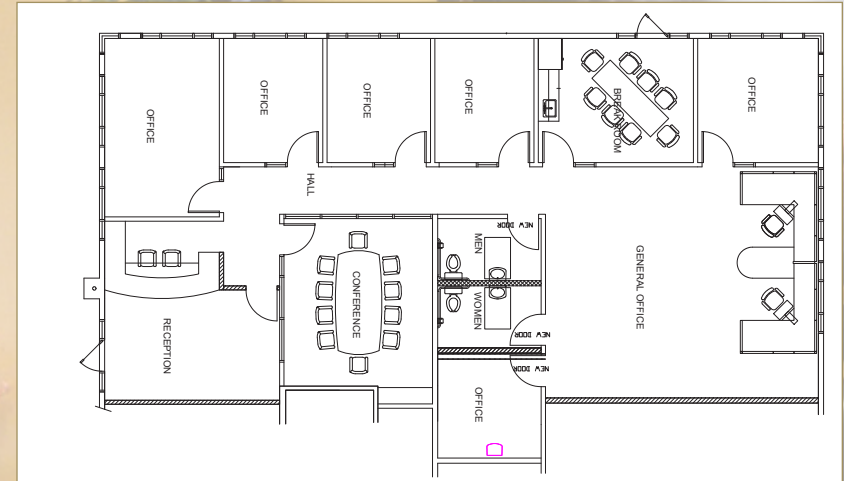
Entrada Executive Plaza

1423 S Higley Rd, Bldg 9

Mesa, AZ 85206

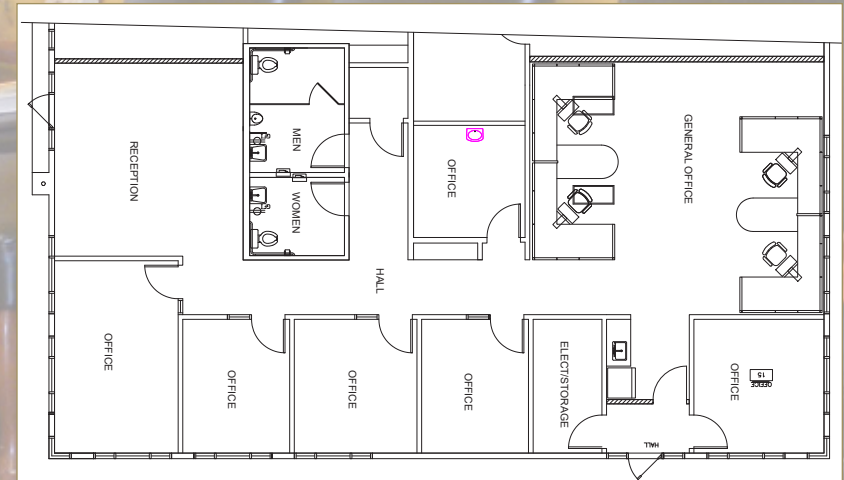
Suite 122: ± 2,615 SF

- Reception
- 6 Offices
- Conference Room
- Bull Pen
- Work Space
- Storage Room
- 2 Restrooms



Suite 121: ± 2,385 SF

- Reception
- 6 Offices
- Conference Room
- Bull Pen
- Break room
- 2 Restrooms



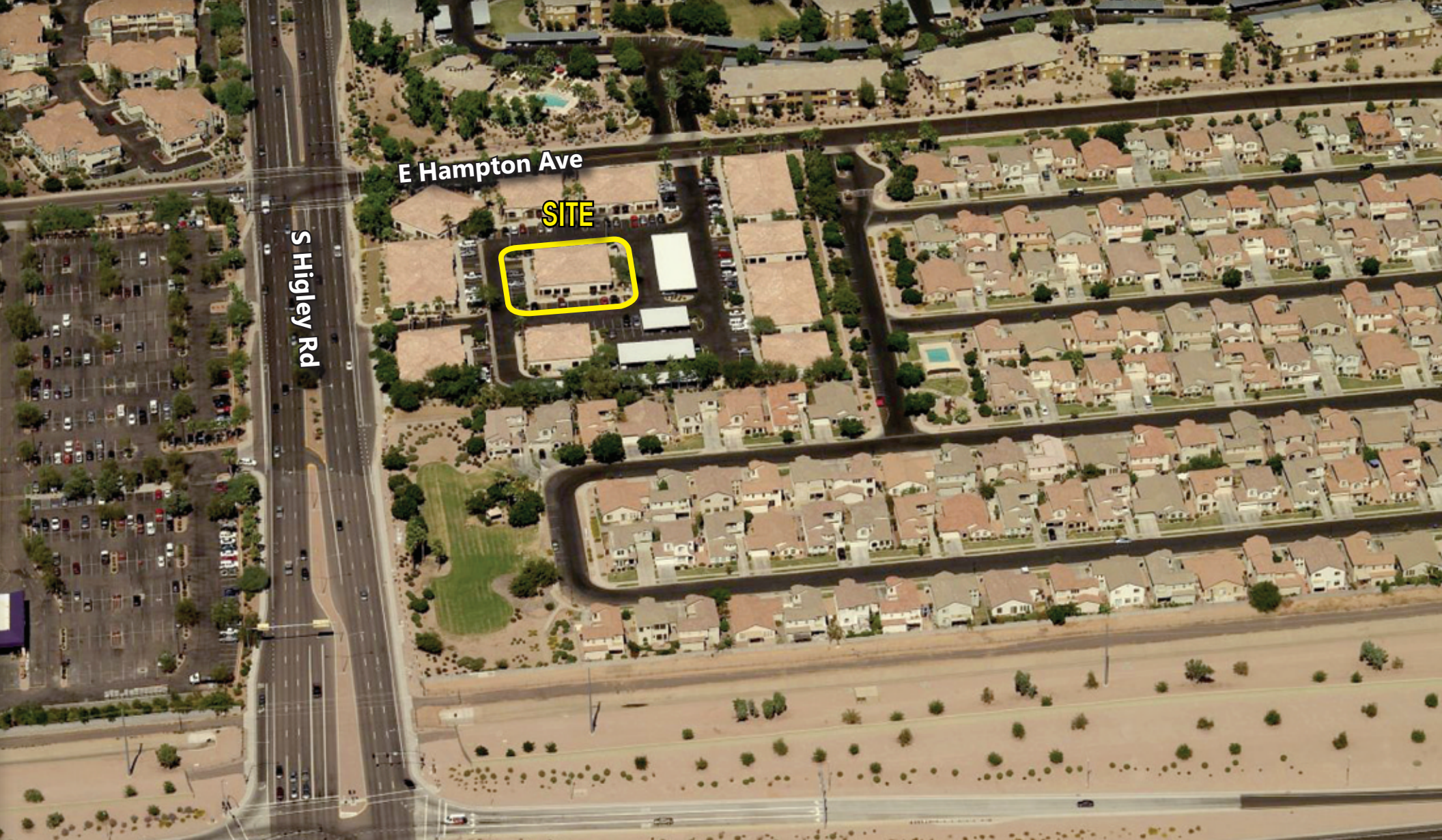
Aashish Parekh
 480.221.8076 (M)
 aparekh@cpiaz.com



COMMERCIAL PROPERTIES INC.

Locally Owned. Globally Connected. CORPAC International

TEMPE: 2323 W. University Drive, Tempe, AZ 85281 | 480.966.2301
 SCOTTSDALE: 7025 N. Scottsdale Rd., Suite 220, Scottsdale, AZ 85253 | www.cpiaz.com



E Hampton Ave

SITE

S Higley Rd

Entrada Executive Plaza

1423 S Higley Rd, Bldg 9

Mesa, AZ 85206

Office Condo For Sale

Aashish Parekh
480.221.8076 (M)
aparekh@cpiaz.com



COMMERCIAL PROPERTIES INC.

Locally Owned. Globally Connected. CORFAC International

TEMPE: 2323 W. University Drive, Tempe, AZ 85281 | 480.966.2301
SCOTTSDALE: 7025 N. Scottsdale Rd., Suite 220, Scottsdale, AZ 85253 | www.cpiaz.com

