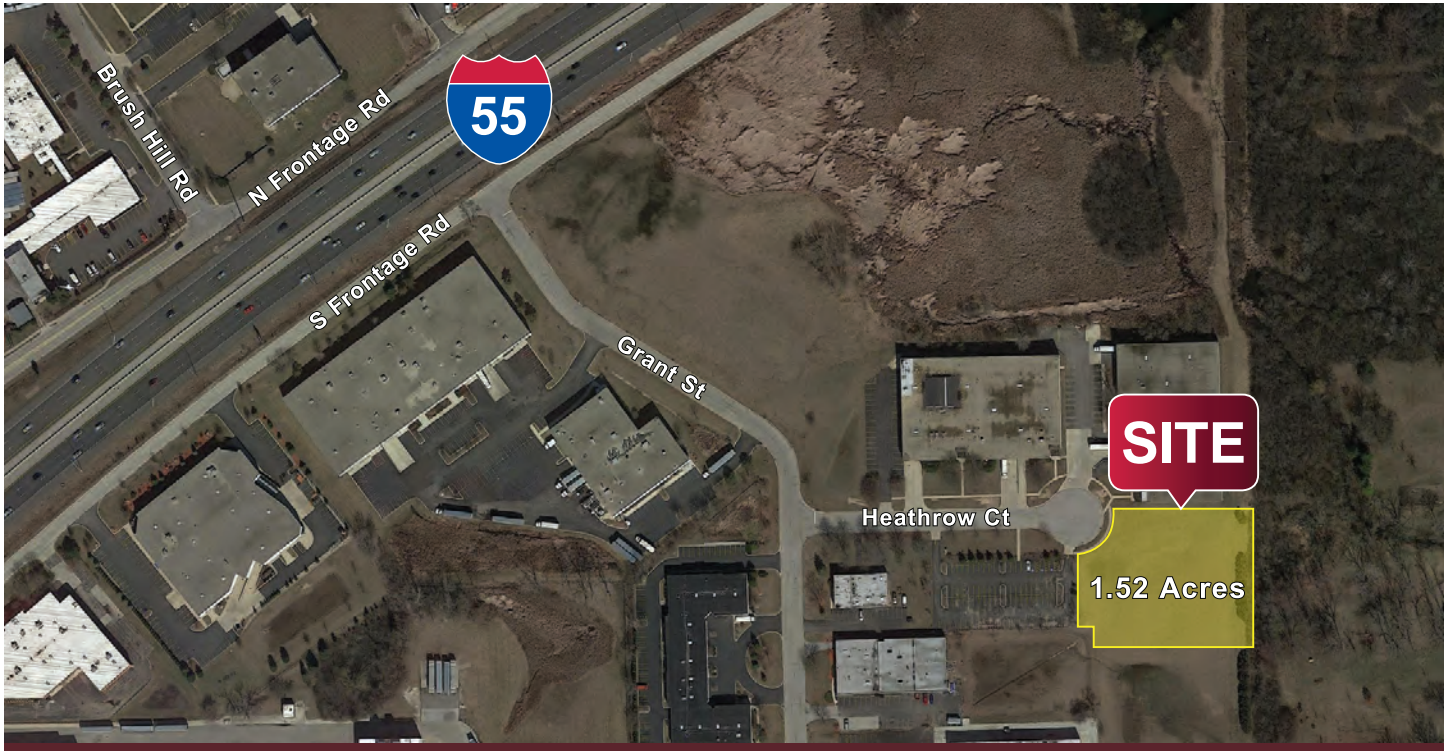


AVAILABLE FOR SALE  
HEATHROW COURT  
BURR RIDGE, IL – DuPAGE COUNTY



**SPECIFICATIONS:**

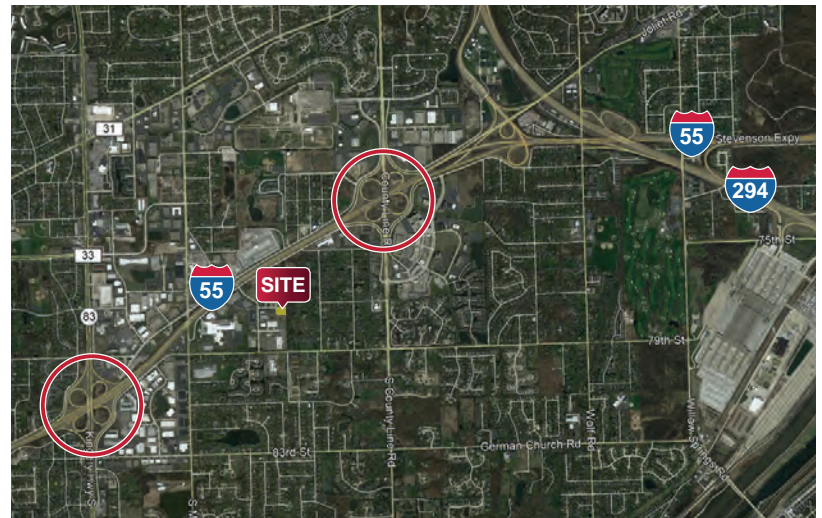
**SITE SIZE:** 1.52 Acres (66,063 SF)  
Expandable

**ZONING:** GI – General Industrial

**COUNTY:** DuPage

**ASKING PRICE:** Subject to Offer

**PIN:** 09-25-303-017



**Timothy J. McCahill**  
Principal  
tmccahill@lee-associates.com  
D 773.355.3044

**Michael J. Androwich, Jr.**  
Principal  
mjandrowich@lee-associates.com  
D 773.355.3047

All information furnished regarding property for sale, rental or financing is from sources deemed reliable, but no warranty or representation is made to the accuracy thereof and same is submitted to errors, omissions, change of price, rental or other conditions prior to sale, lease or financing or withdrawal without notice. No liability of any kind is to be imposed on the broker herein.