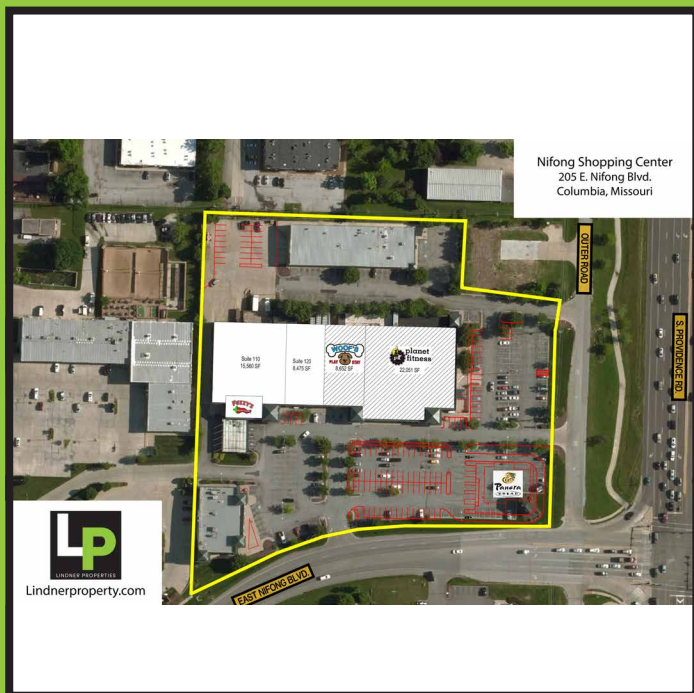
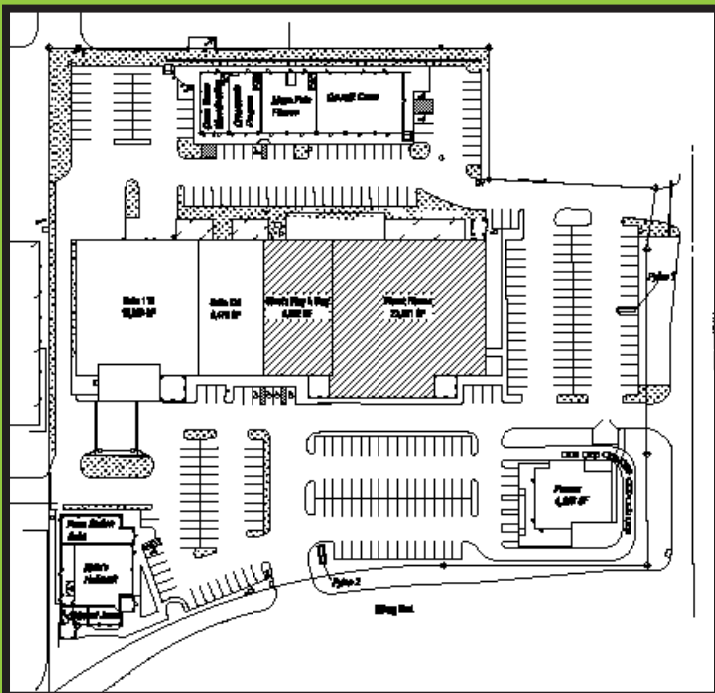


# LP FOR LEASE |

LINDNER PROPERTIES

(573) 446-5500  
LindnerProperty.com

NIFONG SHOPPING CENTER  
8,000 - 24,000 SF AVAILABLE





# LP FOR LEASE |

LINDNER PROPERTIES

Nifong Shopping Center  
Suite 100  
3605 S. Providence  
Columbia, MO 65203

## SUMMARY

- 82,000 square feet
- Providence Road—  
30,000 vehicles per day
- Nifong Boulevard—  
27,000 vehicles per day
- Highly affluent and  
rapidly expanding  
section of Columbia
- 3 minute drive from  
downtown and the  
University of Missouri
- Cotenants include Planet  
Fitness, Woof's Play &  
Stay, Hallmark, Fuzzy's  
Tacos & Penn Station  
East Coast Subs

	1-Mile	3-Miles	5-Miles
Population	9,507	55,061	108,892
Average HH Income	\$65,130	\$72,841	\$75,910
Households	4,456	21,716	45,217
Total Daytime Population	12,209	86,556	155,862



## SUITE SUMMARY

- 24,000 square feet
- Will sub-divide as small  
as 8,000 SF
- Highly sought after  
corner
- Truck dock access
- Prominent pylon signs
- Storefront remodel in  
progress

The above information is deemed to be accurate however it is subject to errors, omissions and change at any time.

For leasing information, contact  
**JAY LINDNER**  
jay@lindnerproperty.com  
(573) 446-5500





# SOUTH COLUMBIA TRADE AREA

