

INTECH One

INTECH One • 6325 Digital Way • Indianapolis • Indiana • 46278



I-465 signage available

Park overview & amenities:

INTECH Park is the largest office development in Indiana.

Indiana's only privately held Certified Technology Park.

Advanced information technology infrastructure.

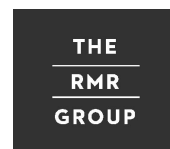
Attractive natural setting with water views.

2.5 miles of walking paths.

- Hotels
- Restaurants
- Daycare
- Banking
- Dry cleaning facilities

Location & access:

- > Northwest side of Indianapolis at I-465 & W. 71st Street.
- > 15 minutes from the CBD and Indianapolis International Airport.
- > 1 mile of interstate frontage.
- > Excellent access via I-465 & I-65 - newly redesigned W. 71st Street interchange.
- > Close proximity to highly skilled labor pool.
- > Indygo bus line route access.



Available Suites:

> First floor

Suite 150 2,763 RSF
Suite 100 5,909 RSF Avail 3/1/19

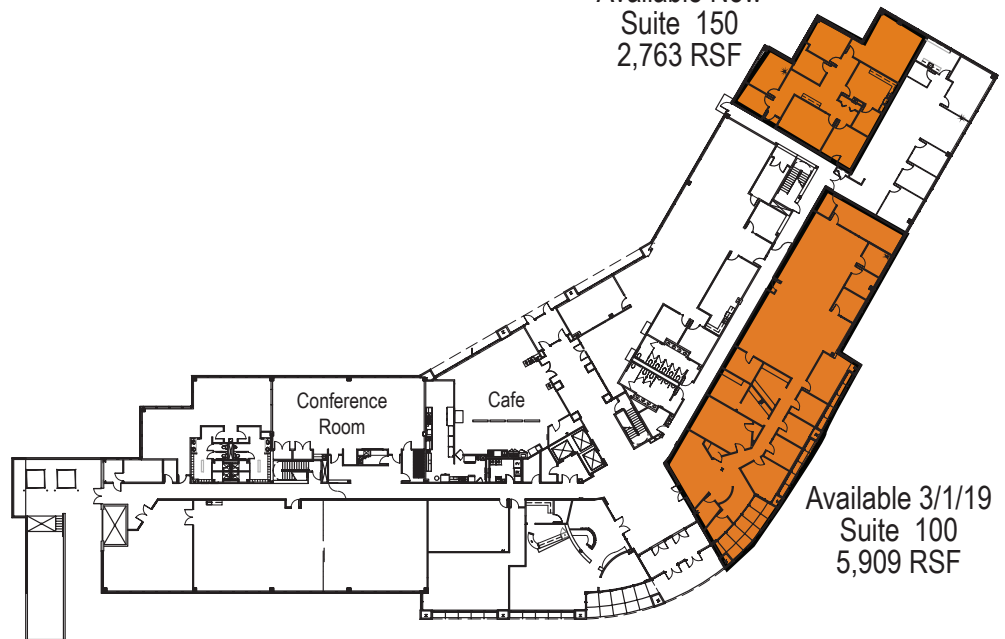
> Third floor

Suite 300 8,598 RSF Avail 3/1/19

Building & Park Information:

- > 140,231 total square feet
- > 4-story, Class A office building
- > Dramatic, two-story lobby
- > +39,000 square foot floor plates
- > 100 seat conference center (INTECH One)
- > Cafe (INTECH One)
- > 4/1,000 s.f. parking ratio

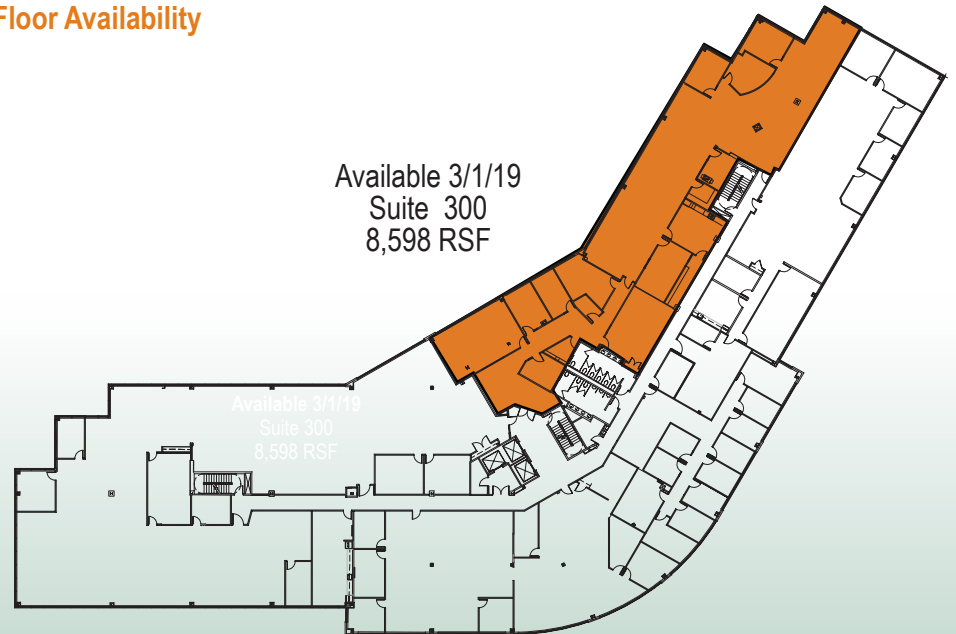
Available Now
Suite 150
2,763 RSF



Available 3/1/19
Suite 100
5,909 RSF

First Floor Availability

Available 3/1/19
Suite 300
8,598 RSF



Third Floor Availability



For more information, contact:

John Robinson
Managing Director
+317 810 7172
john.robinson@am.jll.com

Abby Zito
Vice President
+317 810 7173
abby.zito@am.jll.com



THE
RMR
GROUP