

New Office, Showroom & Flex Space

206 S. Lucile Street
Seattle, WA

New office, showroom & flex space development

Available January 2014

Located in the heart of Georgetown

Design center with great access to I-5 & 99

1st floor	±8,576 sf
Mezzanine	<u>2,960 sf</u>
Total	±11,536 sf

±15,000 sf lot zoned IG2 U/85

30' clear height

3 GL door (12' x 8')

On-site parking

Heavy power - 600 amp / 208 volt / 3 phase

HVAC - 28.5 tons of cooling & heating

Flexible tenant improvement package available

Floor plans on reverse



Location



Contact

Corey Sollom
206.296.9620
csollom@kiddermathews.com

206 S. Lucile Street



Contact

Corey Sollom
206.296.9620
csollom@kiddermathews.com

206 S. Lucile Street



Contact

Corey Sollom
206.296.9620
csollom@kiddermathews.com

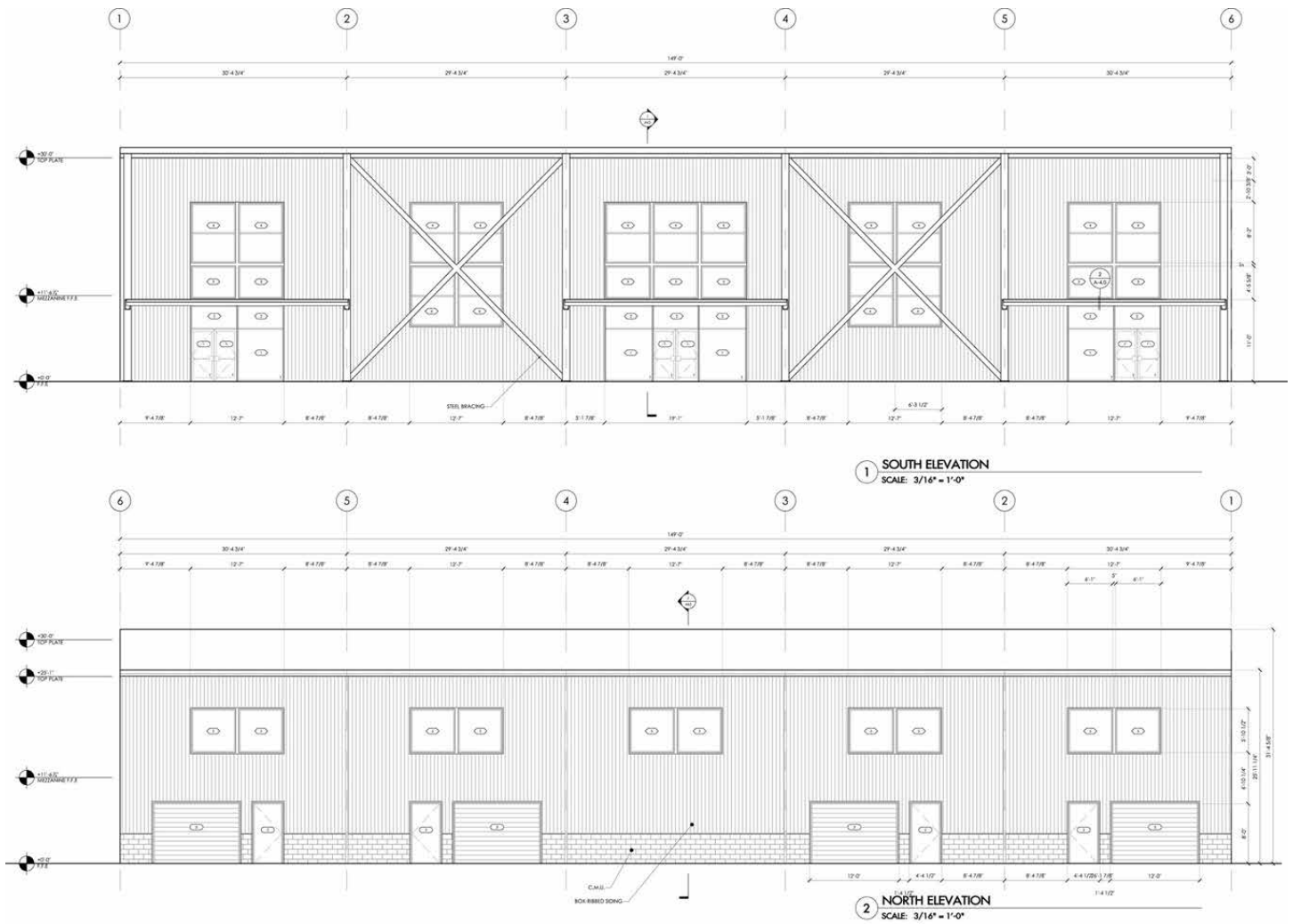
206 S. Lucile Street



Contact

Corey Sollom
206.296.9620
csollom@kiddermathews.com

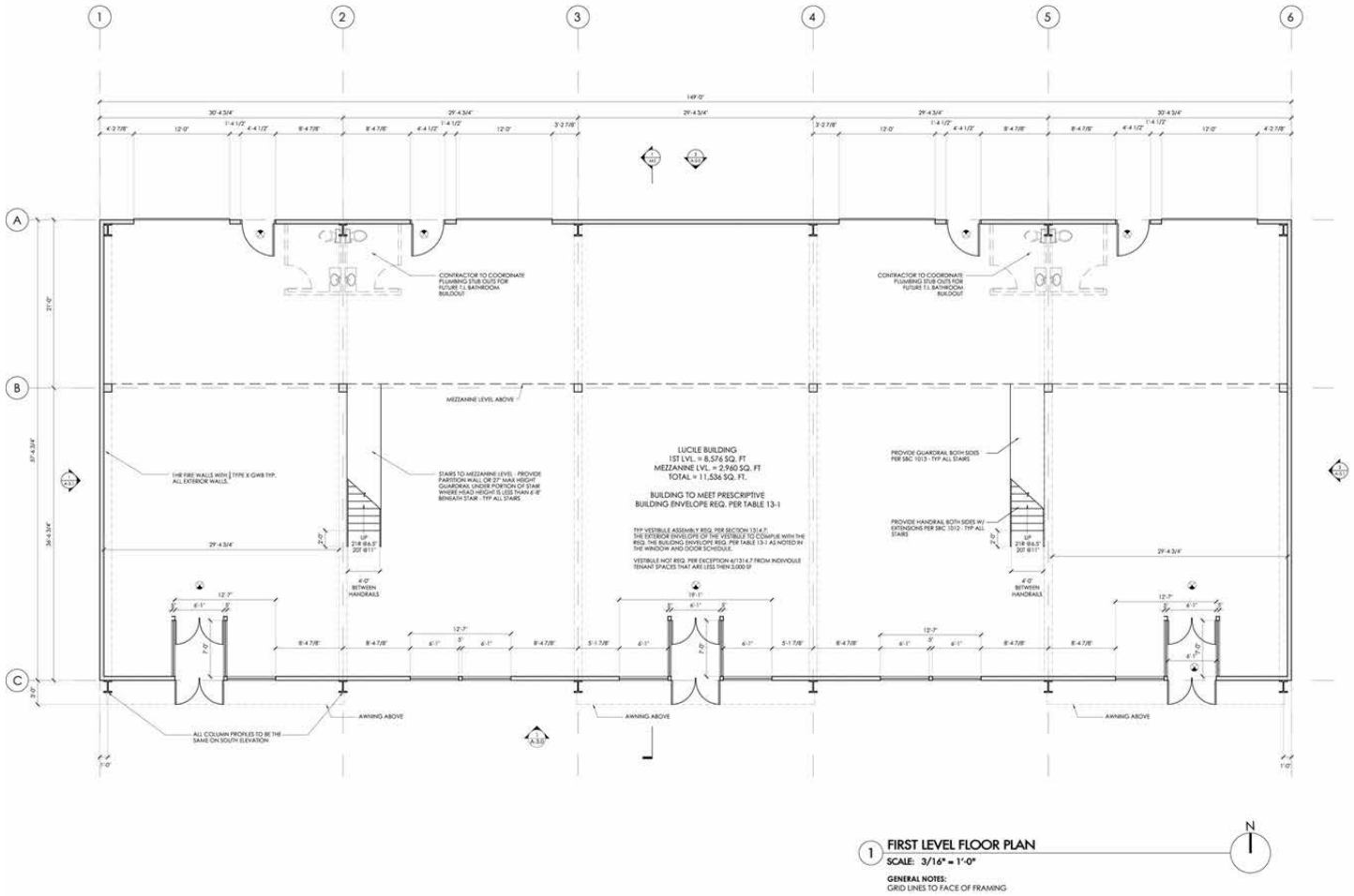
206 S. Lucile Street



Contact

Corey Sollom
206.296.9620
csollom@kiddermathews.com

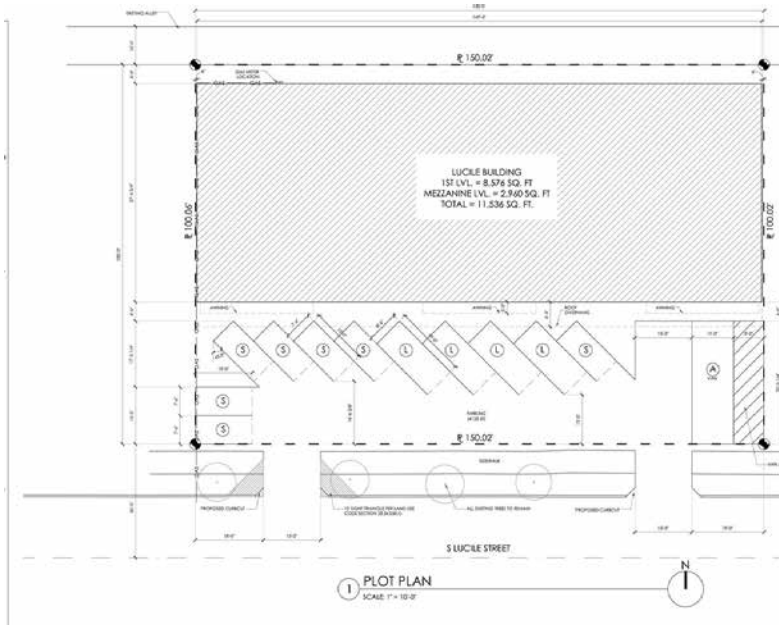
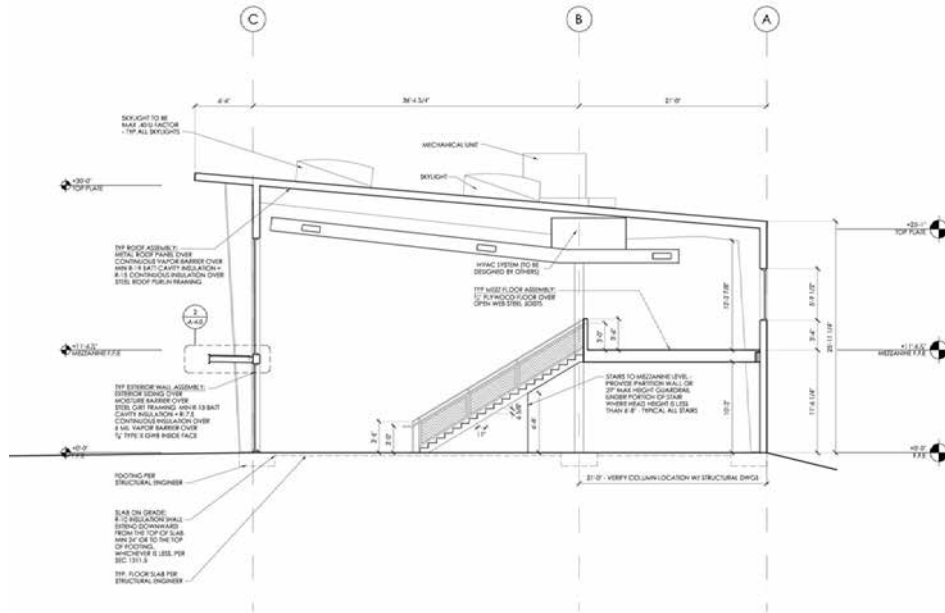
206 S. Lucile Street



Contact

Corey Sollom
 206.296.9620
 csollom@kiddermathews.com

206 S. Lucile Street



Contact

Corey Sollom
 206.296.9620
 csollom@kiddermathews.com