

# 55 WYTHE AVENUE

WILLIAMSBURG, BROOKLYN



**RETAIL SPACE  
FOR LEASE**

# WILLIAMSBURG BROOKLYN

# 55 WYTHE AVENUE

## SPACE HIGHLIGHTS

### LOCATION

Between N 12th St  
& N 13th St

### SPACE

**Ground Floor** 10,000 SF  
**Lower Level** 15,000 SF

### CEILING HEIGHT

18 FT - 22 FT

### FRONTAGE

~200 FT

### DIMENSIONS

Variable

### ZONING

M1-2

### OCCUPANCY

Immediate

### ASKING RENT

Upon Request

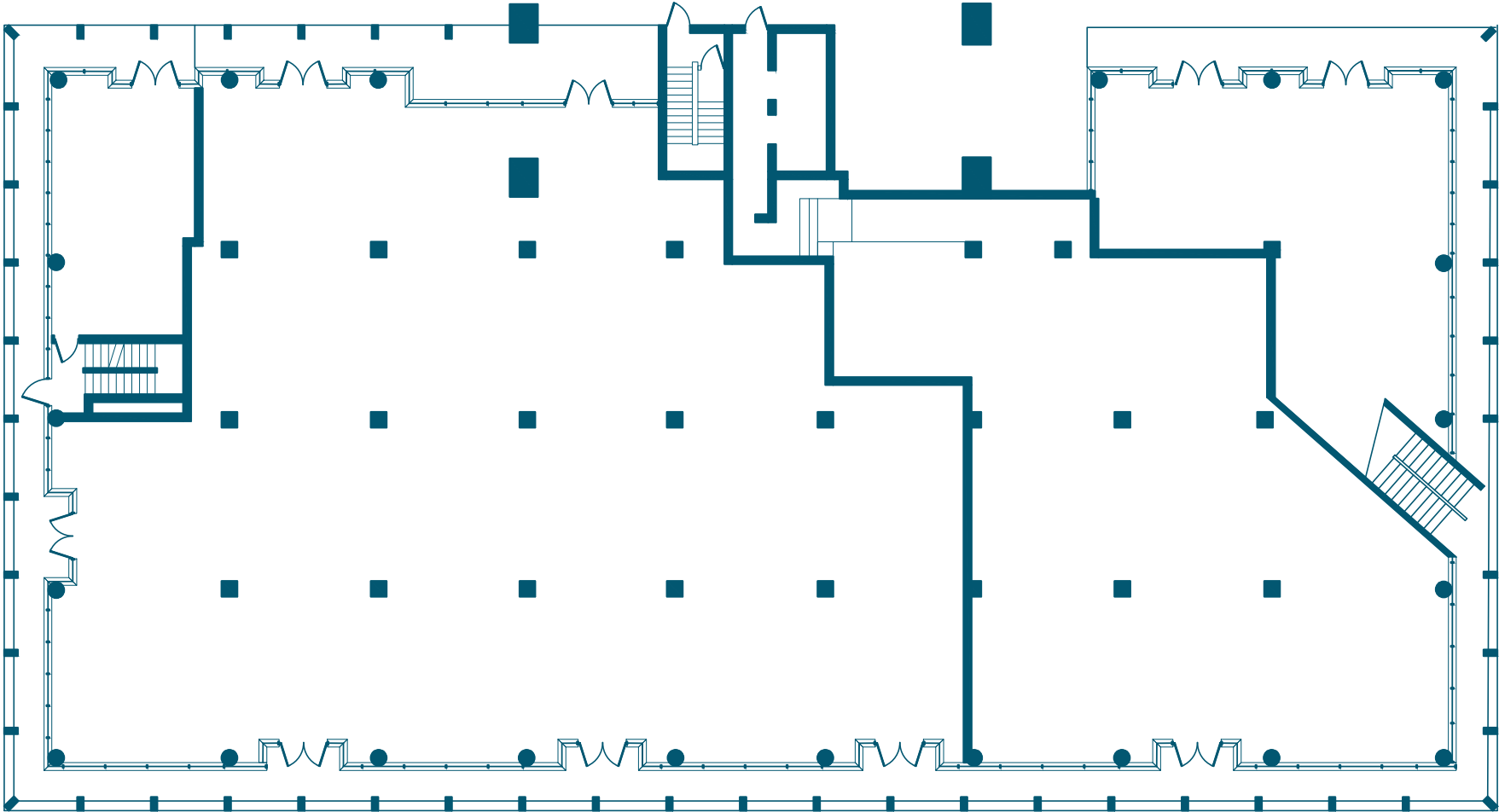
## HIGHLIGHTS

- Newly Developed Retail Space at the base of The William Vale Hotel.
- Floor to ceiling glass exposure to Wythe Ave, North 12th and North 13th Streets
- Located in the heart of Williamsburg's nightlife district
- 653 Hotel Rooms within .2 Mi
- Adjacent to McCarren Park, East River State Park & Future Site of Bushwick Inlet State Park
- Directly Across from 25 Kent, a Half a Million+ SF office development
- On Site Parking Lot



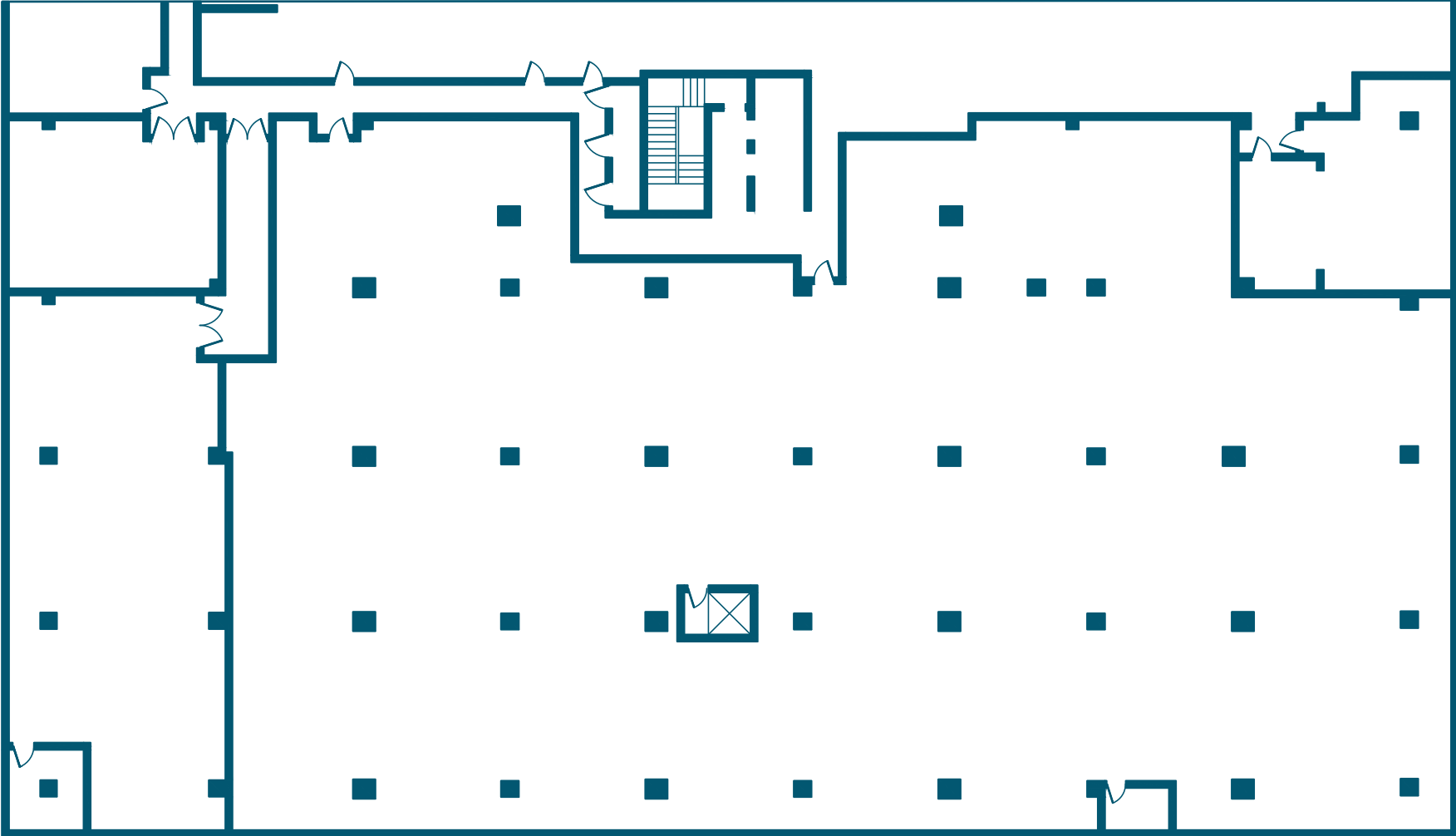
**FLOORPLANS & DETAILS**

**GROUND FLOOR - 10,000 SF**



**FLOORPLANS & DETAILS**

**LOWER LEVEL - 15,000 SF**



# WILLIAMSBURG BROOKLYN

# 55 WYTHE AVENUE

## EXISTING CONDITION



# WILLIAMSBURG BROOKLYN

# 55 WYTHE AVENUE

## EXISTING CONDITION



# WILLIAMSBURG BROOKLYN

# 55 WYTHER AVENUE

## NEIGHBORHOOD DEMOGRAPHICS



**121,583**

POPULATION  
WITHIN 1-MILE  
RADIUS

---



**35.50 Yrs**

AVERAGE  
POPULATION  
AGE

---



**33.12%**

POPULATION  
GROWTH  
SINCE 2010

---



**\$87,483**

AVERAGE HHI  
WITHIN 1-MILE  
RADIUS

---



**4,069**

TOTAL BUSINESSES  
WITHIN 1-MILE  
RADIUS

---



**\$1.4 bn**

ANNUAL SPENDING  
WITHIN 1-MILE  
RADIUS

---

# WILLIAMSBURG BROOKLYN

# 55 WYTHER AVENUE

## NEIGHBORHOOD & TRANSPORTATION

### NEIGHBORHOOD TENANTS

Leuca  
The William Vale  
Westlight  
All-Wise Meadery  
Brooklyn Brewery  
The Whiskey Brooklyn  
The Counting Room  
McCarren Hotel & Pool  
The Bar Method  
North 11th Shoe Repair  
Tacos Cholula  
The Williamsburg Hotel  
Kinfolk 94  
Kinfolk 90  
29 Rooms  
Brooklyn Athletic Club  
Berry Park  
The Gutter  
The Boiler | Pierogi  
Upcycles Brooklyn  
Brooklyn Flea  
Wythe Hotel  
Colossal Media  
Schimanski  
Kent Ale House  
Works Engineering  
Dish Food & Events

### TRANSPORTATION

- 9 Min Walk at Nassau Avenue (0.4 mi)
- 11 Min Walk at Bedford Avenue (0.5 mi)
- 16 Min Walk at Greenpoint Avenue (0.8 mi)
- 17 Min Walk at Metropolitan Avenue (0.8 mi)
- 18 Min Walk at Lorimer Street (0.9 mi)





**WILLIAMSBURG BROOKLYN**

**55 WYTHE AVENUE**

**CONTACT**



**BRAD KROSSER**  
**862-368-7271**  
**BKROSSER@EXRNY.COM**

**ALAN CHABBOTT**  
**516-776-0363**  
**AC@EXRNY.COM**

