



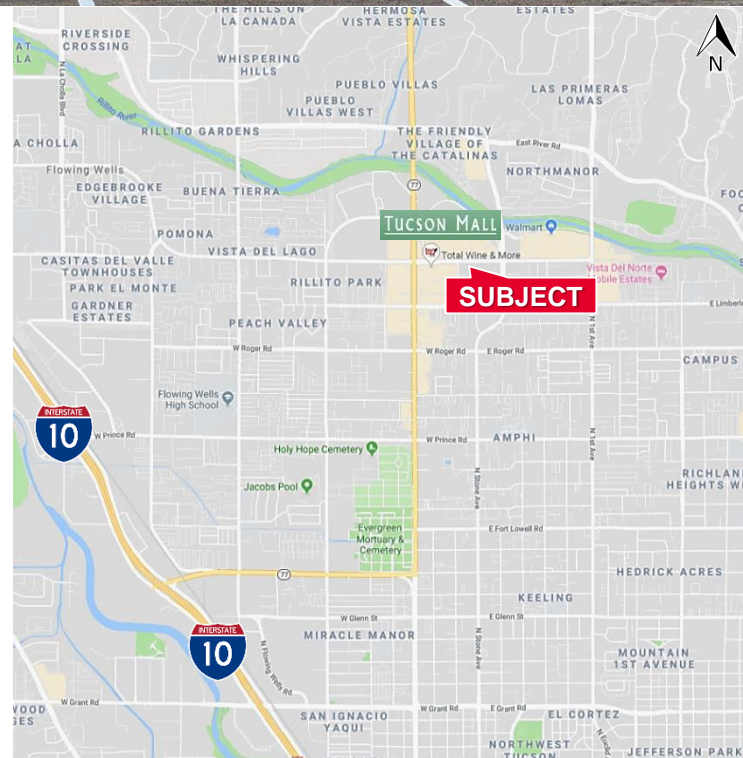
Directly Across from The Tucson Mall!

Property Highlights

- Elevator served multi-tenant building
- Fantastic views
- Covered parking available
- Easy access from Wetmore Road
- Public transportation nearby
- Within walking distance to restaurants, retail and close to all other amenities

Property Details

Available	608 SF - 8,190 SF
Lease Rate	\$19.00/SF
Lease Type	Full Service
Possession	Immediate



Thomas J. Nieman
Principal, Office Properties
+1 520 546 2728
tنيان@picor.com

PICOR Commercial Real Estate Services
5151 E. Broadway Blvd, Suite 115
Tucson, Arizona 85711
phone: +1 520 748 7100
picor.com

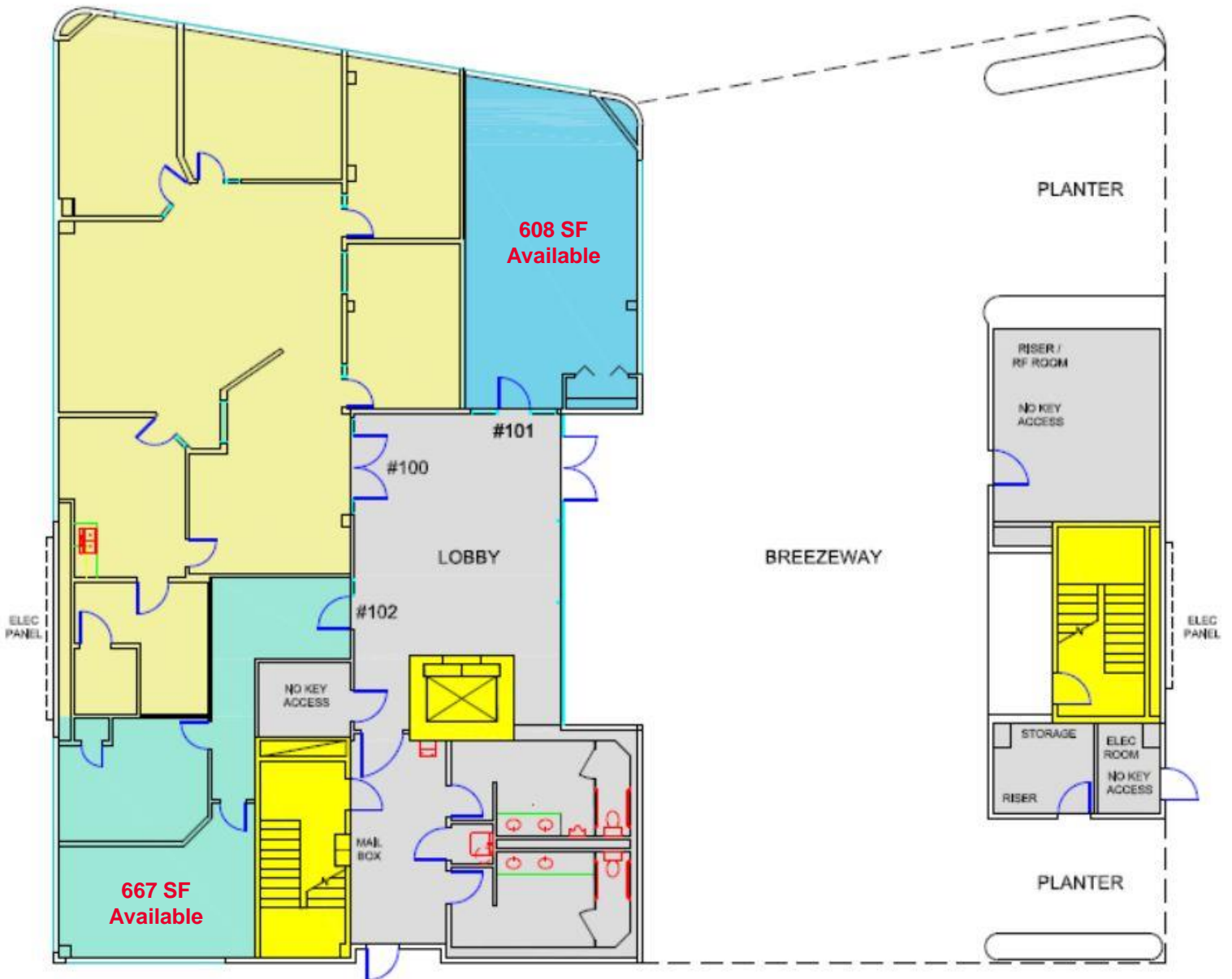
Independently Owned and Operated / A Member of the Cushman & Wakefield Alliance

Cushman & Wakefield Copyright 2019. No warranty or representation, express or implied, is made to the accuracy or completeness of the information contained herein, and same is submitted subject to errors, omissions, change of price, rental or other conditions, withdrawal without notice, and to any special listing conditions imposed by the property owner(s). As applicable, we make no representation as to the condition of the property (or properties) in question.

Floor Plan

First Floor: 608 - 667 SF

PROFESSIONAL OFFICE



Independently Owned and Operated / A Member of the Cushman & Wakefield Alliance

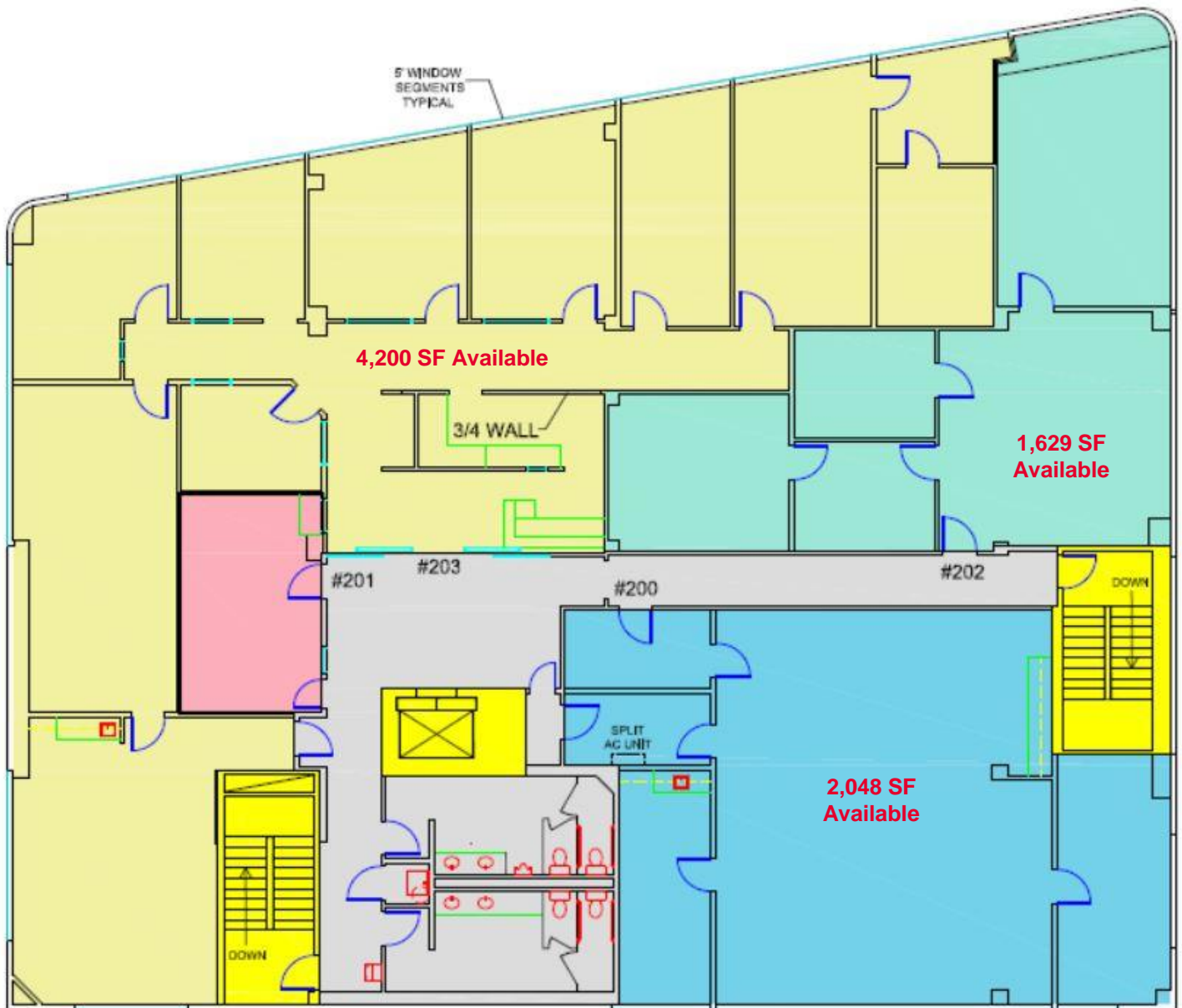
Cushman & Wakefield Copyright 2019. No warranty or representation, express or implied, is made to the accuracy or completeness of the information contained herein, and same is submitted subject to errors, omissions, change of price, rental or other conditions, withdrawal without notice, and to any special listing conditions imposed by the property owner(s). As applicable, we make no representation as to the condition of the property (or properties) in question.

12/12/2019

PROFESSIONAL OFFICE

Floor Plan

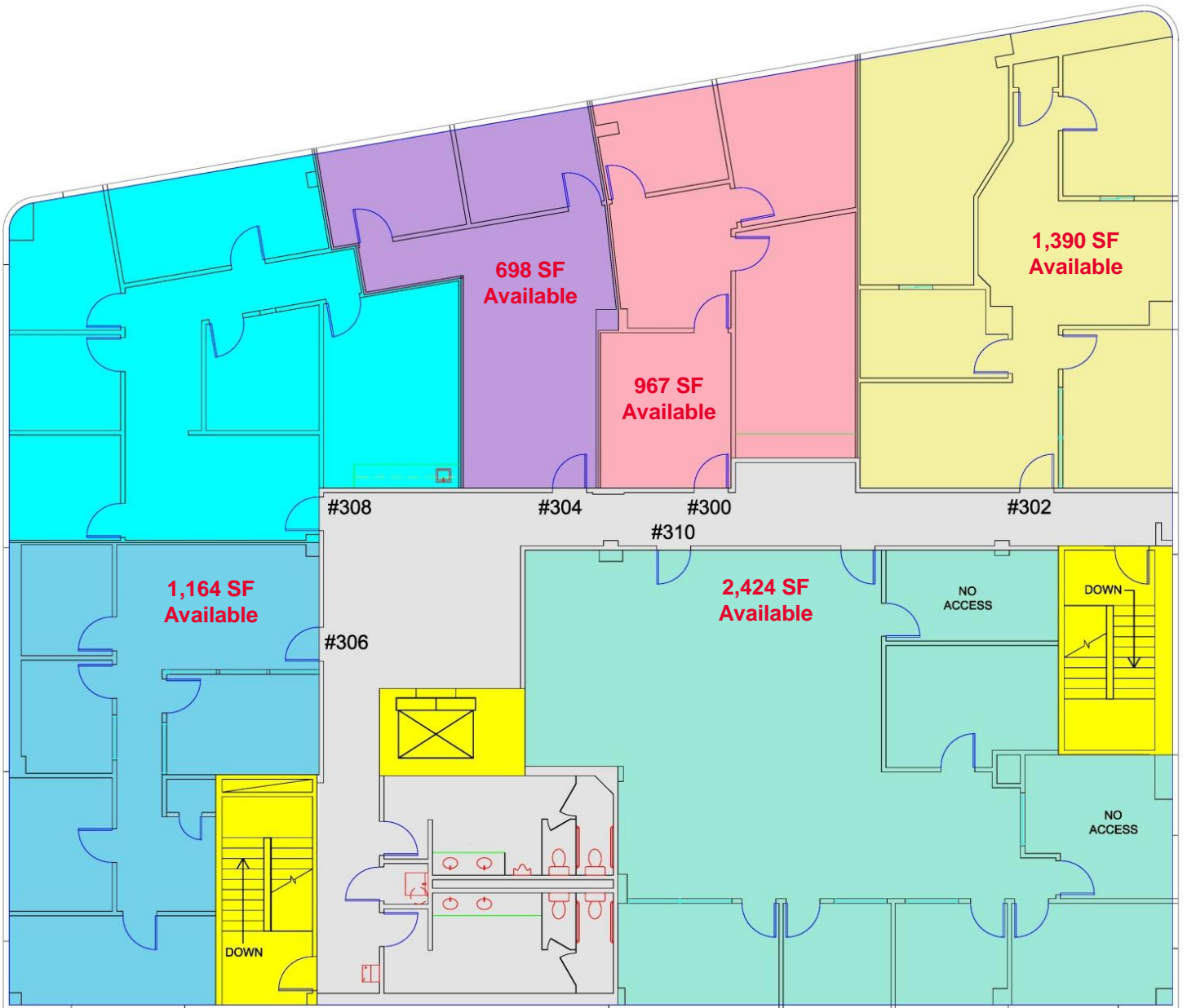
Second Floor: 1,629 SF – 8,190 SF



Floor Plan

Third Floor: 698 SF – 2,424 SF

PROFESSIONAL OFFICE



Independently Owned and Operated / A Member of the Cushman & Wakefield Alliance

Cushman & Wakefield Copyright 2019. No warranty or representation, express or implied, is made to the accuracy or completeness of the information contained herein, and same is submitted subject to errors, omissions, change of price, rental or other conditions, withdrawal without notice, and to any special listing conditions imposed by the property owner(s). As applicable, we make no representation as to the condition of the property (or properties) in question.

12/12/2019

Trade Area Map



Independently Owned and Operated / A Member of the Cushman & Wakefield Alliance

Cushman & Wakefield Copyright 2019. No warranty or representation, express or implied, is made to the accuracy or completeness of the information contained herein, and same is submitted subject to errors, omissions, change of price, rental or other conditions, withdrawal without notice, and to any special listing conditions imposed by the property owner(s). As applicable, we make no representation as to the condition of the property (or properties) in question.

12/12/2019