

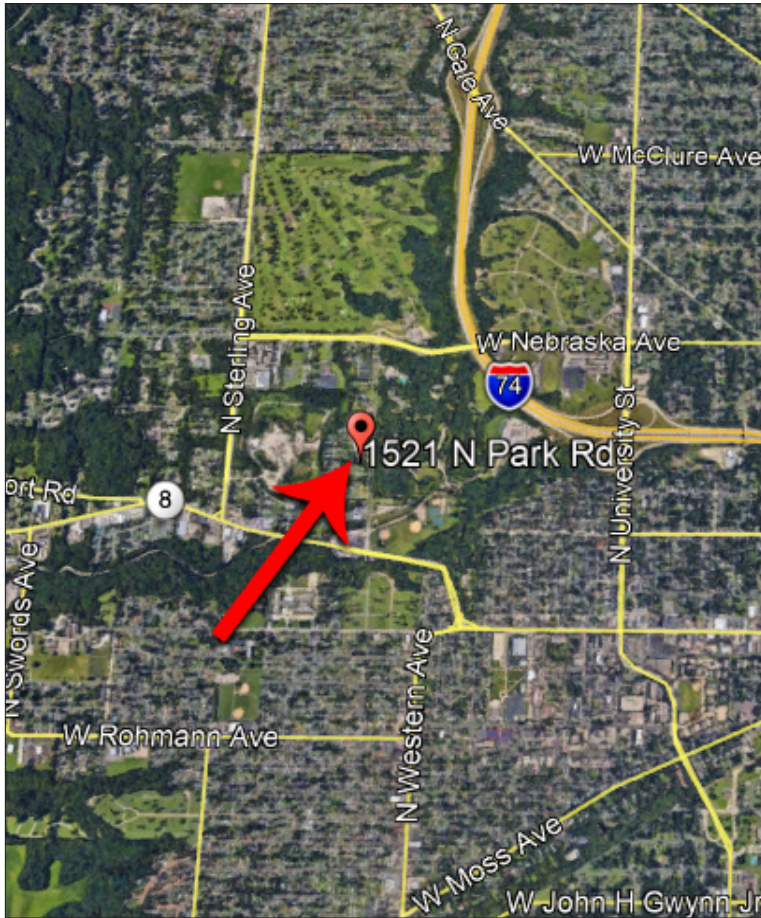


- 5,344 sq ft religious facility for sale
- Located on Park Road across from Laura Bradley Park
- Built in 1991 and remodeled in 2001/2002
- Spacious entryway leads into large open sanctuary with potential for 300/325 occupancy
- Two classroom areas
- Men's and women's restroom in the front of the building
- Additional office/admin space in the rear with a kitchenette and a restroom with a shower
- Sound system wired throughout
- Exterior lighting in the parking lot with automatic timers
- Additional parking lot to the north with a one car garage for storage
- Property sits on 1.62 acres and offers room to expand



WILL HAYES

E-MAIL: willhayes@josephcamper.com | CELL: 309-643-0717



PROPERTY DETAILS

PROPERTY TYPE	CHURCH
BUILDING SIZE	5,344 SF
LOT SIZE	1.62 ACRES
YEAR BUILT	1991
YEAR REMODELED	2001/2002
ZONING	R-1
PARKING	LARGE ON-SITE LOT
REAL ESTATE TAXES (2017)	EXEMPT
SALE PRICE	\$325,000 \$300,000



WILL HAYES

E-MAIL: willhayes@josephcamper.com | CELL: 309-643-0717