

817 WOODMERE DRIVE, LAFAYETTE



SUITE #2

\$1,075 per mo.
1,606 SF

UTILITIES

Tenant pays for their own phone/data and interior janitorial. Landlord pays all other utilities, taxes, lawncare, and snow removal.

SUMMARY

Three charming units located in a well-kept office building on east side of Lafayette, each with private entrance, exterior signage, and ample parking.

- Suite 2 is 1606 sf, rents for \$1075.00/month, and offers a large reception desk and waiting room, 3 private offices, two restrooms, and a large open area for co-working.



765-426-2339

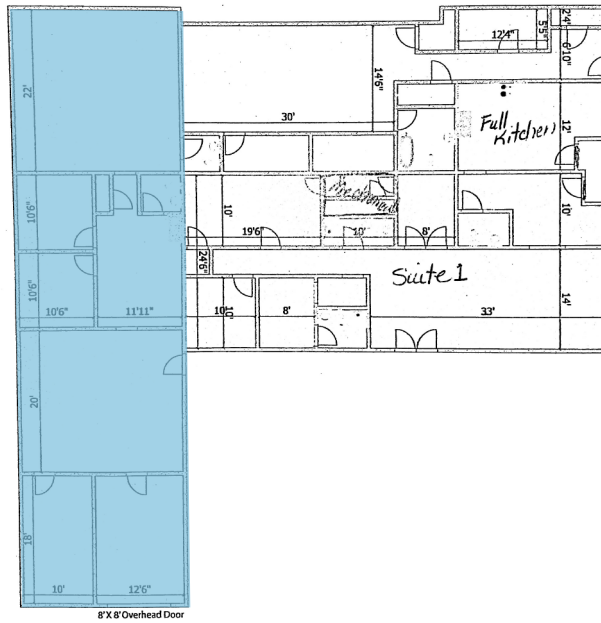
@ bpowell@shook.com

🌐 cbcshook.com



 **BRI POWELL**
COMMERCIAL REAL ESTATE BROKER

817 WOODMERE DRIVE, LAFAYETTE



SUITE #2
\$1,075 per mo.
1,606 SF



765-426-2339
@ bpowell@shook.com
c cbcshook.com



BRI POWELL
COMMERCIAL REAL ESTATE BROKER